



Specialized Purchasing Consultants

1491 East Side River Road

Dummer, NH 03588

(800) 750-1538

www.spccopypro.com

2017-2018 Annual Report

Year - End Photocopier Analysis

With projected costs for 2018-19

Donn Davis
RSU 14 - Windham Raymond
228 Windham Center Road
Windham, ME 04062



Specialized Purchasing Consultants Corp.
Serving Maine & New Hampshire since 1988

October 2018

Skip Tilton
President

Corporate Office:
1491 East Side River Drive
Dummer, NH 03588
(800) 750-1538

Donn Davis
RSU 14 - Windham Raymond
228 Windham Center Road
Windham, ME 04062

VISIT US ON THE WEB:
www.spccopypro.com

Dear Donn:

We at Specialized Purchasing Consultants, wish to thank you for your continued confidence in us. Our relationship is now 17 years strong, and we hope that your trust in us and this relationship will continue for many years to come.

The following Annual Report provides an overview of last year's reprographic equipment usage and status. Recommendations are included based on usage and remaining life expectancy to address potential problem areas. This will help to avoid needless down time and improve equipment reliability.

Every year we strive to improve or enhance our services to save our clients time, money, and effort. For the past number of years, numerous new features have been implemented to benefit our clients such as Simplified Billing, FMAudit automated meter reading, STARDoc and IT Asset Management. We hope you have found these services to be beneficial and time-saving. We are very pleased to offer these services at no additional charge.

During our meeting with you to review this report, we would like to take some time to review our current services as well as new services soon to be offered and how you can benefit from these services.

Again, we appreciate the opportunity to continue to provide you with the best possible pricing, service, and equipment. If you have any questions or are in need of more information, please let us know.

Sincerely,

Skip Tilton
President

Table of Contents

The SPC Team	3
Equipment Health Status	4
Aging Equipment Summary	5
Non Contracted Devices	6
StarDoc Timeline	7
StarDoc Features	9
StarDoc New Features	11
Annual Black Volume by Building	12
Annual Black Volume Overall	13
Average Student to Copy Usage – Black Only	14
Cost Comparison – Black Only	15
Annual Color Volume by Building	16
Annual Color Volume Overall	17
Average Student to Copy Usage – Color Only	18
Cost Comparison – Color Only	19
Color to Total Volume Percentage	20
Usage Profile for Service & Supplies	21
SPC Service & Supply Cost Savings	80
Projected Equipment Costs by Building - Black	81
Projected Equipment Costs by Building - Color	82
Service & Supply Usage Profile by Vendor - BlackV	83
Service & Supply Usage Profile by Vendor - Color	84
Reprographic Equipment Assessment	85
Leased Equipment	86
Owned Equipment	89
Service and Supply Contract - Client	94
Warranty	95
StarDoc User Names	96
Benefits of partnering with SPC	98
SPC Values Our Vendors	99

The SPC Team...

would like to personally thank you for your continued trust and confidence!



Skip Tilton, President

Billie Jo Tilton, Vice President

As co-founders of SPC, Billie Jo and I are very proud of our team of professionals. The concept of group purchasing to save millions has grown since 1988 into providing over 16 different managerial services that increase reliability and extend the life of your equipment. However, none of this would have been possible without the loyalty of our clients, many of whom we have assisted for more than 20 years! Together, we have realized the lowest prices

possible while improving the quality of your service and equipment, as well as providing ways to increase your equipment reliability and the ability to monitor and track usage variations throughout the year to keep your costs under control.



Jessica Paradis

Accounting Coordinator

As the new accounting director for SPC, my focus is to ensure transactions are handled with importance, accuracy, and timeliness. My goal is for all communication, with client or vendor, to be satisfactory for all parties. I am

excited to be part of this team, and I am available to answer any billing or contract questions you may have.

Alex Webster

Operations Manager

My top priority is ensuring that our clients receive the absolute best customer service possible. Whether you have a question about your SPC STARDoc site, an upcoming upgrade or your existing equipment, I am here to answer any questions you may have. I am very excited about the new features that we have on STARDoc. We are now able to offer *at no additional charge to our clients* features that normally cost thousands of dollars.



Pam Weed

Client-Vendor Relations

It is always my goal to ensure a good working relationship between clients and vendors. This applies to billing, upgrades, equipment reliability, and everything in between. I am available to assist you with smooth transitions and quick resolutions.

Joel Heffernan

Implementation Specialist

With over 40 years of experience in the copier/printer industry, I am able to deliver knowledgeable assistance before, during, and after equipment changeover. I am available to our clients to address any concerns they may have and to assure our clients have a pleasant experience with SPC.



Robert Dutil

Director of Information Technology

I work behind the scenes to keep everything running smoothly. I appreciate SPC's honesty, work ethic and loyalty, and it is my goal to make sure SPC has the tools it needs to continue improving their technology to better serve their clients and to be as productive as possible. By doing this, our clientele has the ability to monitor their assets and keep their costs down. I am excited about what the future holds for SPC and our clients.

Equipment Health Status

Total Number of Machines:	205
Total Black Photocopiers	42
Total Color Photocopiers	19
Total Black Network Printers	119
Total Color Network Printers	25
Total Removed from Service:	1
# of Units OFF Warranty:	0
# of Units Approaching End of Warranty:	15
# of Units Overused:	0
# of Units Underused:	12
Commencement Date:	9/15/2016
# of Annual Payments Left on Lease	3
All Warranties and Service Contracts Expire:	6/30/2022
SPC's FM Audit Print Management Software Loaded	Yes
Printer Contract	Yes

NOTE: When a machine goes off warranty, it does not mean that the service contract expires. It simply means that if a replacement machine becomes necessary, it may not be at "no charge."

Dear Donn,

There are 15 machines that are getting up there in age. 3 are the older Toshiba's left in the district from the last lease. They are under the same warranty as the rest of your equipment as you can see by the no-charge warranty swap done recently at the Windham High School. The remaining 12 are some printers you held on to after the 2016 upgrade.

It is important to not ignore machines that are being overused or underused. In your case, we have 12 printers doing less than 500 prints a year. We recommend that if any staff were to ask for a printer, that you pull one of these and deploy where there is a greater need.

Also, there is some powerful print management software available that you might want to consider during your next bid process. See Page #11

Sincerely,
Skip

Aging Equipment Summary

The following equipment is seven or more years from the date they were first offered for sale by the manufacturer. This is a major factor because availability of parts, cost of operation and warranties all become diminished at 10 years from the Date of Introduction. Usage, age, and service history need to be considered to see if they are due for replacement soon.

Building	Department	Make / Model	Serial Number	Vendor Name	Intro Date
Katahdin Program	Main Office	Toshiba e-Studio 3040c	CND219478	A-COPI	05/2011
Manchester School	Special Education Resource Room	Toshiba e-Studio 4540c	CMD218320	A-COPI	05/2011
RSU 14 District Bldg	Administrative Assistant	Samsung SCX-4623FW	Z4YSBFFB502059K	SPC	06/2010
RSU 14 District Bldg	Copy Room - Check Printer	HP Laser Jet 600 M602	CNCCG580X6	AXIS	11/2011
RSU 14 District Bldg	Facilities Director - Bill Hansen	Samsung SCX-4623FW	Z4YSBFFZA00004Z	SPC	06/2010
RSU 14 District Bldg	Human Resources	Samsung SCX-4623FW	Z4YSBFFB200750P	SPC	06/2010
RSU 14 District Bldg	IT Director - Bob Hickey	Samsung SCX-4623FW	Z4YSBFFB200760Z	SPC	06/2010
RSU 14 District Bldg	IT Storage	Samsung SCX-4623FW	Z4YSBFFB501025E	SPC	06/2010
RSU 14 District Bldg	Payroll	Samsung SCX-4623FW	Z4YSBFFB900602A	SPC	06/2010
RSU 14 District Bldg	Reception	Samsung SCX-4623FW	Z4YSBFFZC01086E	SPC	06/2010
RSU 14 School Transportation	Main Office	Toshiba e-Studio 3040c	CNB326928	A-COPI	05/2011
Windham High	Athletic Department Admin	Samsung SCX-4623FW	Z4YSBFFB102606X	SPC	06/2010
Windham High	Pam's Printer	Samsung SCX-4623FW	Z4YSBFFB801401E	SPC	06/2010
Windham Middle	Main Office (MVD TO STORAGE)	Kyocera FS-C5350DN	QVQ1Z05199	A-COPI	08/2009
Windham Primary	Room B101	Kyocera FS-C5350DN	QVQ1Z05202	A-COPI	08/2009

Non Contracted Devices

RSU 14 - Windham Raymond

Make - Model	Serial Number	IP Address	Last Update
HP LASERJET Professional P1102w	VNB3212665	10.10.16.188	1/18/2018 7:56:47 AM
HP LASERJET 400 M401DNE	PHGFG30616	10.10.16.175	10/9/2018 7:58:11 AM
HP COLOR LASERJET M425DW	VNB3D23299	10.10.16.169	10/9/2018 7:58:11 AM
HP LASERJET M402dn	JPBDZ16482	10.10.28.116	10/9/2018 7:58:11 AM
HP LASERJET 400 M401DN	VNB3N04810	10.10.4.117	10/9/2018 7:58:11 AM

Machine Count: 5... Our Goal with the next upgrade is to get all non contract devices under a CPC agreement. VNB3N04810 was under contract in the past, but was slated to be traded in 2016. We can re-add it as well as these other ones.



1988 Specialized Purchasing Consultants opens its doors

- Began offering equipment at the sales representative's cost with continued cooperative buying power, obtaining competitive rates on leases, equipment, and service and supply contracts.

1999 Improved Annual Reports

- Revised Annual Report format to include new charts and tables for more expansive usage and budget detail
- Initiated 5% cost per print annual increase cap

2001 Solid-Ink Printers and Meter Collection

- Offered low-cost-of-operation solid-ink network printers to help reduce printing costs
- Began collecting meter reads directly from client and submitting to vendors via spreadsheet, providing more accurate and consistent billing

2002 Bond Counsel Review

- Added Bond Counsel Review to endure any and all funding sources provided legal documentation to meet State statutes and regulations

2003 Contracts and Warranties Updated

- Service & Supply Contracts revised to reflect SPC's commitment to managing a client's account for five years while allowing the client a 30-day cancel option
- Warranty revised to protect equipment, guaranteeing service or replacement at no charge, even if a vendor goes out of business

2005 Economic Municipal Relief Fund Established

2006 Data Collection Agent

- Data Collection Agent Software offered for meter collection convenience

2007 Insurance Fund

- Insurance Fund established for equipment upgrades with SPC monitoring installations from start to finish. SPC absorbs cost of returning leased equipment, electrical or network drop installs or upgrades, and surge protectors (ESPs)

2012 STARDoc - Print Management Software Developed and Implemented

- Live Floor Plans allow IT administrators to move devices around on their own floor plans
- Low-end network printers added to contracts and monitored
- Simplified Billing introduced

2013 STARDoc - Daily Tracking

- Meters gathered daily to track usage

2014 STARDoc - Monthly Audits

- Users can see a monthly snapshot of current usage and estimated projections

2015 STARDoc - Mapping Options and Asset Management

- Allows mapping of other IT devices (Wireless Access Points, IP Cameras, Projectors, VoIP Phones, etc.)
- IT Asset Management tracks all IT purchases, warranty expirations, etc.

2018 STARDoc - Improved Pinpointing of Budget and Communications

- Improved pinpointing of machines projected to go over budget
- Facilitate communication with your vendor's service manager
- Request service history on any given printer or copier



- **Cost Projection by Department or Building** - Who Benefits? Accounts Payable, Business Manager and Superintendent
 - Allows you to formulate next year's budgets as early as December
 - Allows you to see the projected usage bill in advance
 - Tabulate total budgets and total costs district wide
 - Volume or cost pages allow you to pinpoint specific machines on the floor plans
 - Timeline - allowing you to go back to see how your budget compares to previous years
- **Map your devices on Floorplans** - Who Benefits? Business Manager, IT
 - Identifies detailed information (IP address, serial number, vendor ID, CPC, consumed volume, toner and service alerts)
 - Device information tab will allow you to easily access the web interface of the printer/copier
 - Non-Reporting device listing for devices that haven't reported for more than 2 weeks
 - Asset Management (Servers, Wireless Access Points, IP Cameras, Projectors, Apple TV's)
- **Floor Plans Admin** - Who Benefits? Business Manager and IT
 - Allows IT and Business Manager to move devices around on Floor Plan
 - Paper trail of device locations after summer break
 - Will show Previous Devices, Present Equipment and Proposed Equipment

- **Contacts Page** - Who Benefits? Business Manager and IT
 - Control Access and Permissions to Star Doc
 - Toggle Email all (Toner, Service Monthly Audits)
- **Device Listing Page** - Who Benefits? Business Manager and IT
 - Centralized location for detailed information of District's assets
 - Exportable device listing to Excel or PDF
 - Tracks additional non-contract devices
 - IP Addresses and MAC addresses automatically imported
 - Strikethrough on machines that have been removed
- **Monthly Audits** - Who Benefits? Business Manager and Superintendent
 - Monthly Cost Snapshot
 - Shows amount of devices not reporting to help improve accuracy of projections
- **Timeline:** Who Benefits? Business Manager
 - Track historical volume and cost per building
- **"Last Sync Date"** Who Benefits? IT Manager
 - Shows the last time that FMAudit synced for that client

New Features

Industry Wide

Consult: Secure Print Release, also known as Follow Me Print or Find-Me Printing.


- Print to a single global queue, walk up, and collect at any device.
- The application allows jobs to be held at the server level and released when the user engages it at any multi-function device (MFD). It allows users to print at any area within the building as long as the MFD has the features needed by the user.

STARDoc

NEW! Over Budget Report feature

- Allows user to select the Over Budget feature to produce a report showing each machine currently running over projected volumes, listed with highest amount over first.
- Catch overused equipment early, before equipment begins to break down due to over use.
- Request service history on any machine right through STARDoc.

Over Budget



Room:

Room 201 Principal's Office

Make & Model:

Canon IRC5051

Serial Number:

GQM65369

IP Address:

172.16.10.145

Projected Amount Over Budget:

\$1,902

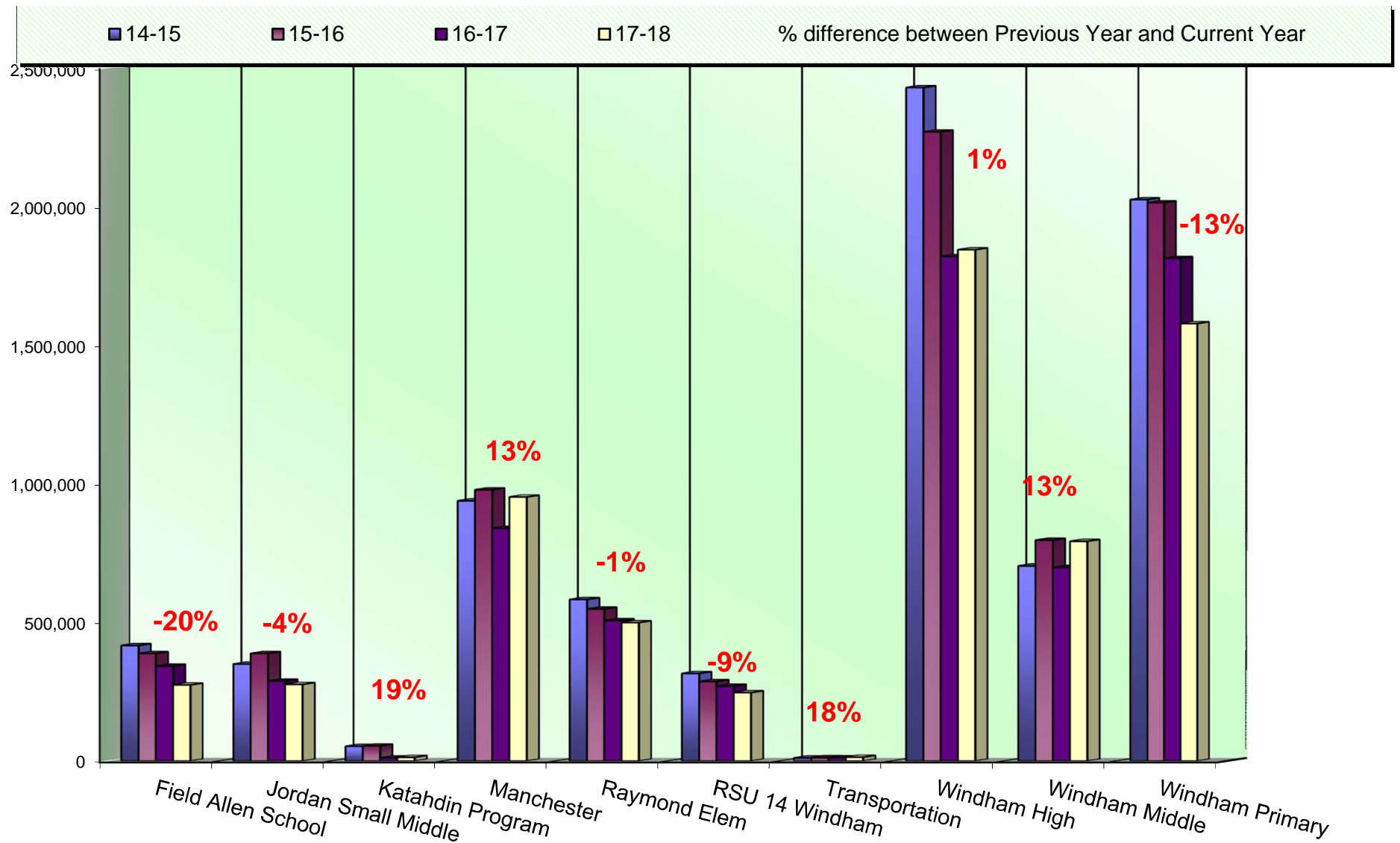
Previous

Next

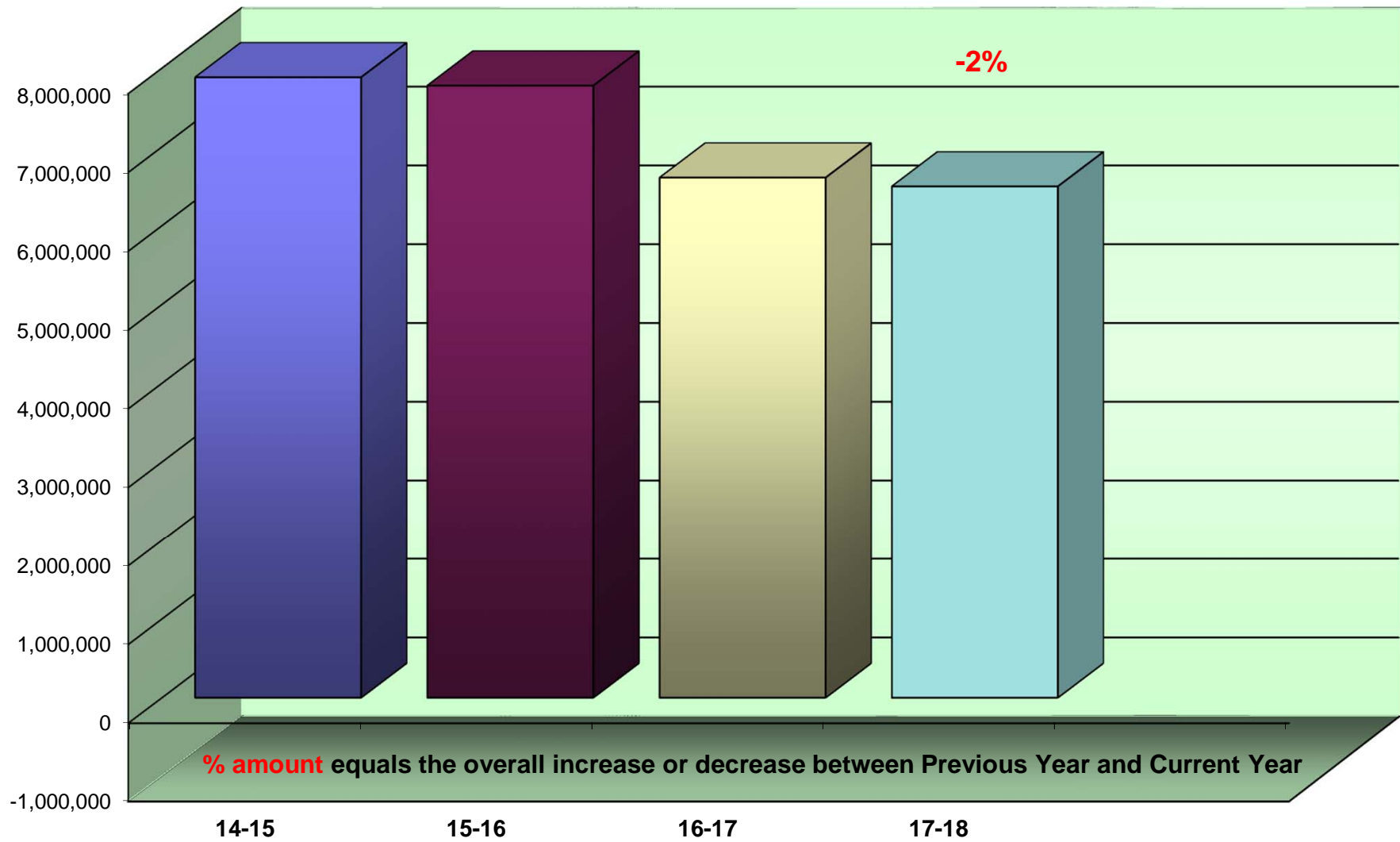
Request Service History

Close

Annual Black Volume by Building



Annual Black Volume Overall



Average Student to Copy Usage – Black Only

Using the projected costs by building as the basis, this table represents the projected average usage and cost per student for each building.

<i>Building Name</i>	<i>Student Population</i>	<i>Annual Volume</i>	<i>Total School Cost*</i>	<i>Annual Copies Per Student</i>	<i>Annual Cost Per Student</i>
Field Allen School	190	275,627	\$6,214.36	1,451	\$32.71
Jordan-Small Middle	175	277,722	\$5,931.29	1,587	\$33.89
Katahdin Program	24	13,530	\$284.62	564	\$11.86
Manchester School	462	953,232	\$21,362.32	2,063	\$46.24
Raymond Elementary	225	500,924	\$10,646.30	2,226	\$47.32
RSU 14 District Bldg	0	247,891	\$6,540.33	0	\$0.00
RSU 14 School Transportation	0	13,968	\$297.63	0	\$0.00
Windham High	945	1,843,292	\$43,982.69	1,951	\$46.54
Windham Middle	608	793,688	\$18,201.12	1,305	\$29.94
Windham Primary	731	1,577,388	\$35,234.51	2,158	\$48.20
<i>Totals</i>	3,360	6,497,262	\$148,695.16	1,934	\$44.25

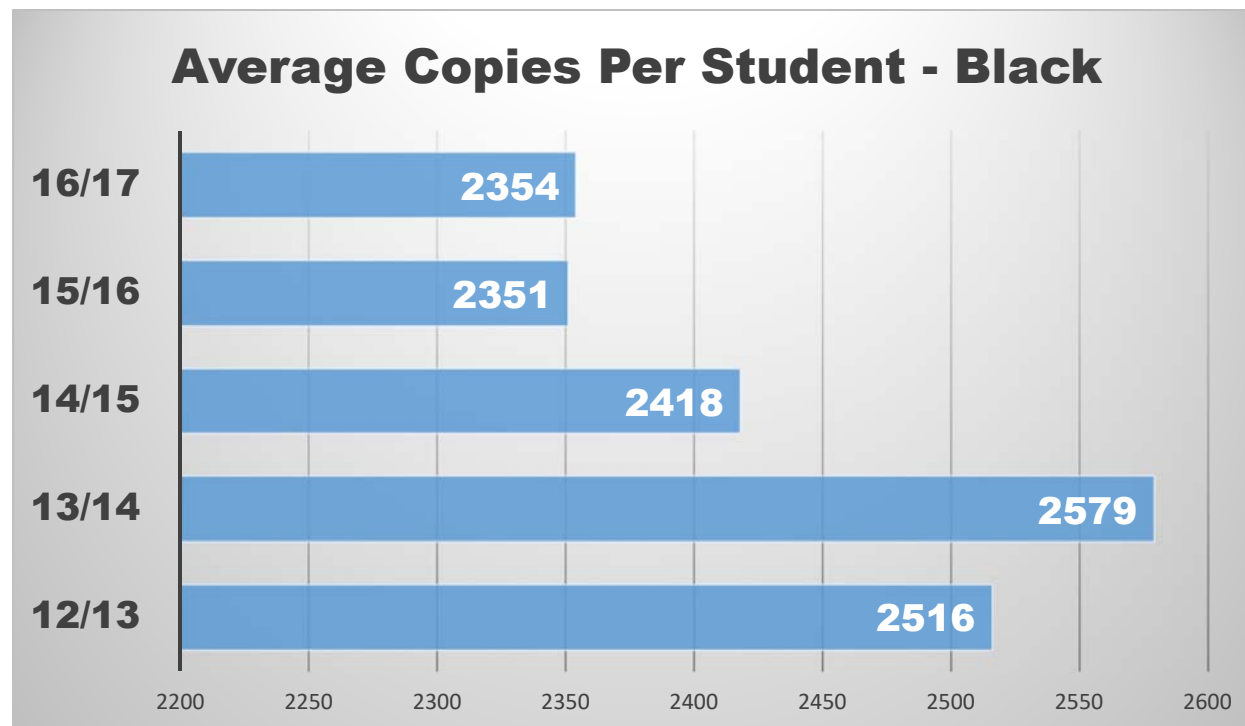
**Total School Cost refers to the cost of Service & Supplies, Paper, and Equipment. See Projected Equipment Costs by Building table later in this Report.*

Cost Comparison – Black Only

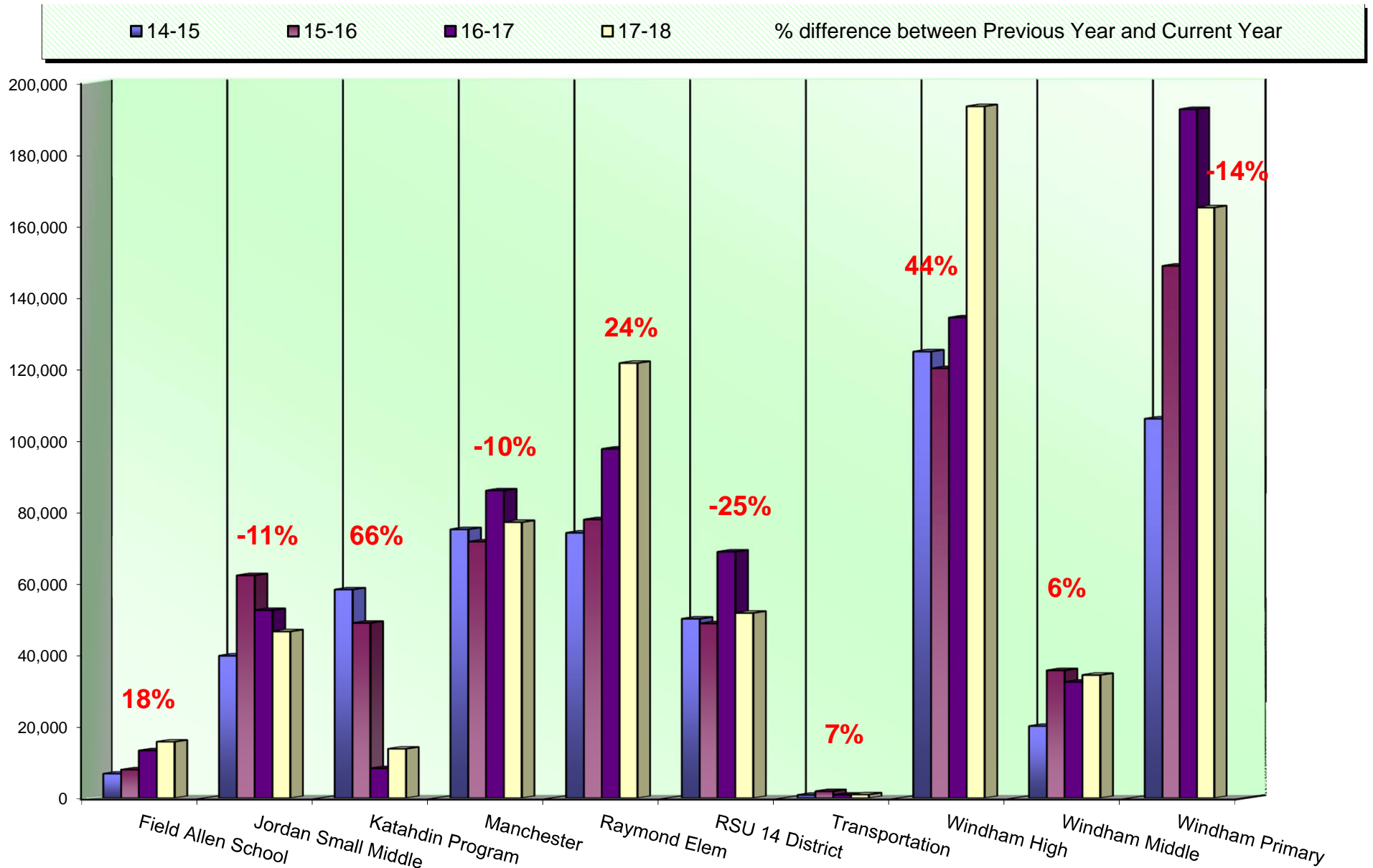
This is an SPC Comparison contrasting your district with other client school districts throughout the states of Maine, New Hampshire, and Vermont. By comparing to the Average Student to Copy Usage, this will help you to set up future budgets if student populations increase or decrease within the district or if you plan to build an addition or a new school.

	Total Student Population	Total Annual Volume	Total District Cost*	Annual Copies Per Student	Annual Cost Per Student
All Schools w/Student Populations	88,906	209,301,843	\$4,194,294.05	2,354	\$47.17

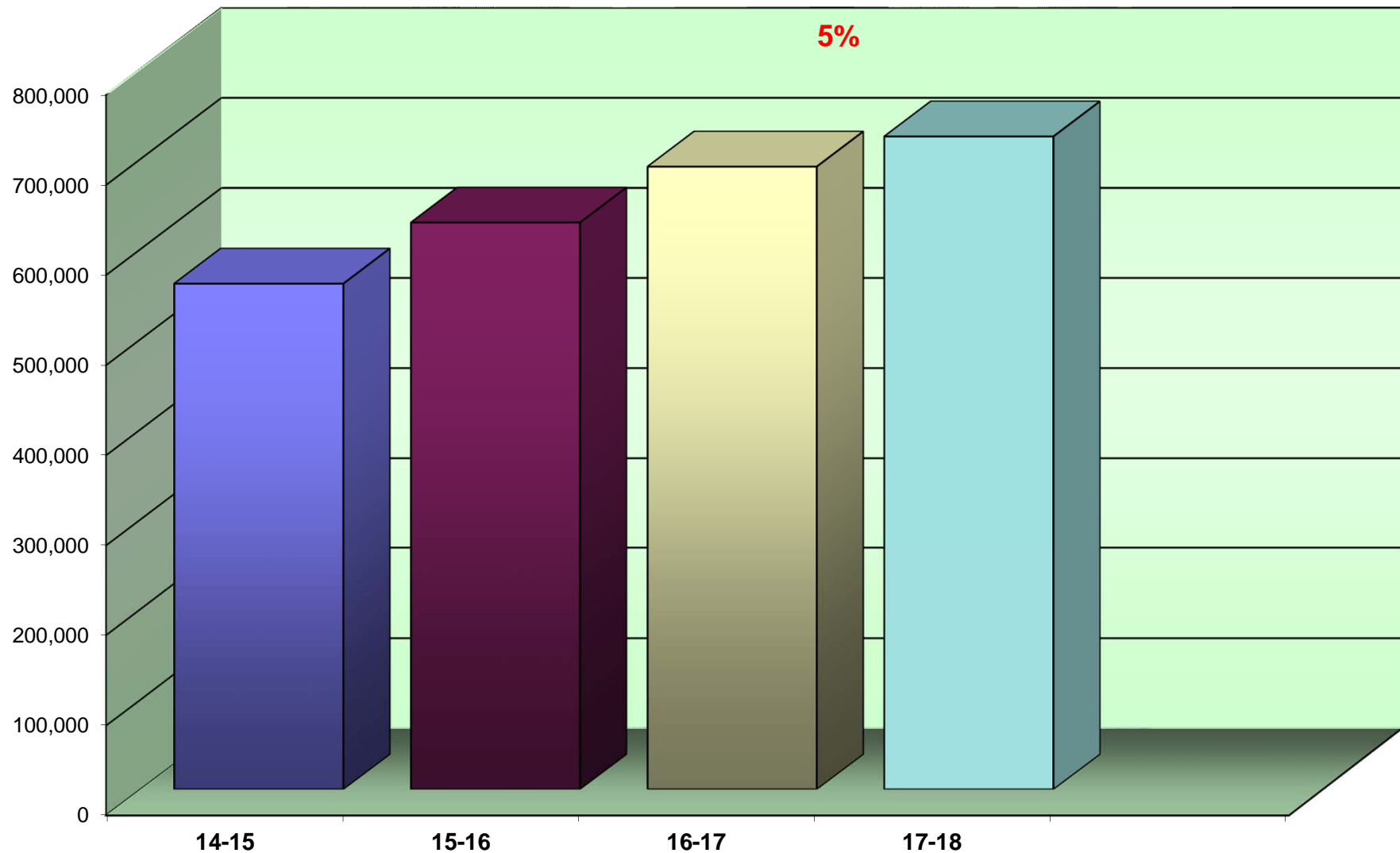
* Total District Cost refers to the cost of Service, Supplies, Paper, and Equipment



Annual Color Volume by Building



Annual Color Volume Overall



% amount equals the overall increase or decrease between Previous Year and Current Year

Average Student to Copy Usage – Color Only

Using the projected costs by building as the basis, this table represents the projected average usage and cost per student for each building.

<i>Building Name</i>	<i>Student Population</i>	<i>Annual Volume</i>	<i>Total School Cost*</i>	<i>Annual Copies Per Student</i>	<i>Annual Cost Per Student</i>
Field Allen School	190	16,249	\$741.60	86	\$3.90
Jordan-Small Middle	175	47,316	\$2,159.50	270	\$12.34
Katahdin Program	24	14,223	\$730.35	593	\$30.43
Manchester School	462	77,867	\$5,378.32	169	\$11.64
Raymond Elementary	225	122,043	\$5,570.04	542	\$24.76
RSU 14 District Bldg	0	52,457	\$4,969.29	0	\$0.00
RSU 14 School Transportation	0	1,015	\$73.35	0	\$0.00
Windham High	945	193,323	\$10,302.97	205	\$10.90
Windham Middle	608	35,210	\$3,782.28	58	\$6.22
Windham Primary	731	165,231	\$7,560.79	226	\$10.34
Totals	3,360	724,934	\$41,268.50	216	\$12.28

**Total School Cost refers to the cost of Service & Supplies, Paper, and Equipment. See Projected Equipment Costs by Building table later in this Report.*

Note: New STARDoc tool will flag the High Color Usage. See Page #11 under new STARDoc features. Industry Ratios are 185 color prints per student per year. Please contact our SPC technical team to provide training to your staff.

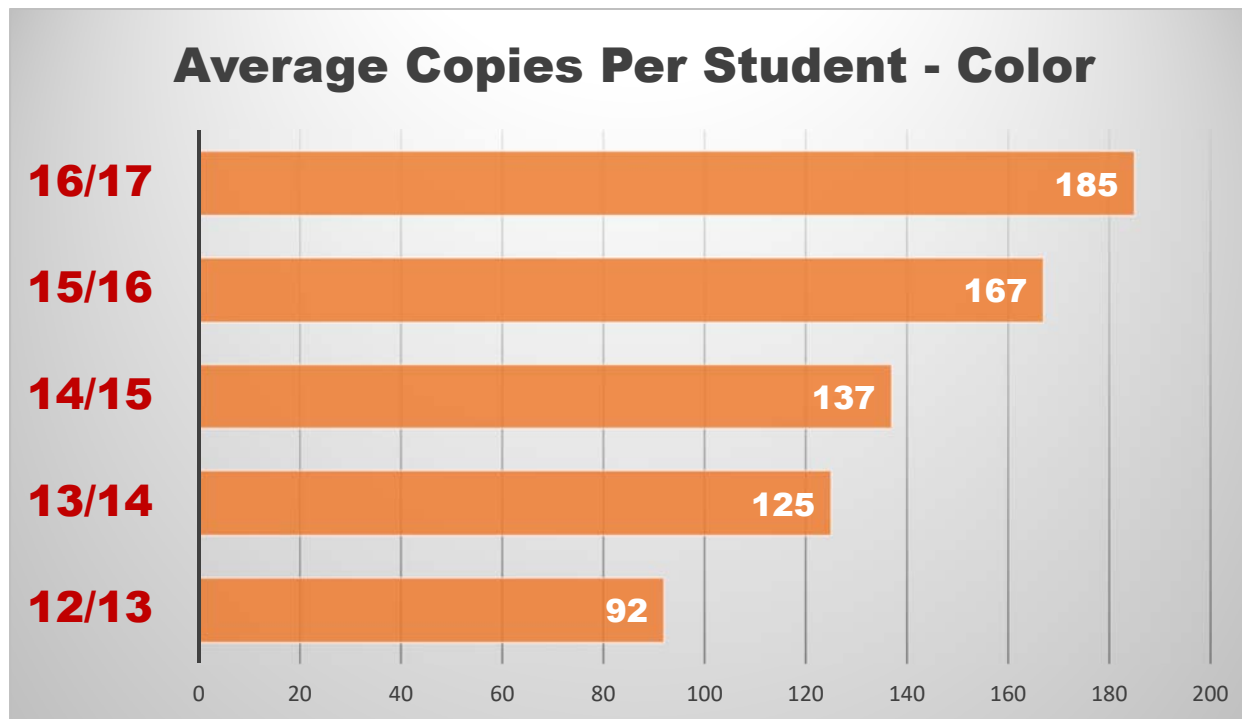
District Wide Black Totals	6,497,262	\$37,654.04
District Wide Color Totals	724,934	\$40,145.97

Cost Comparison – Color Only

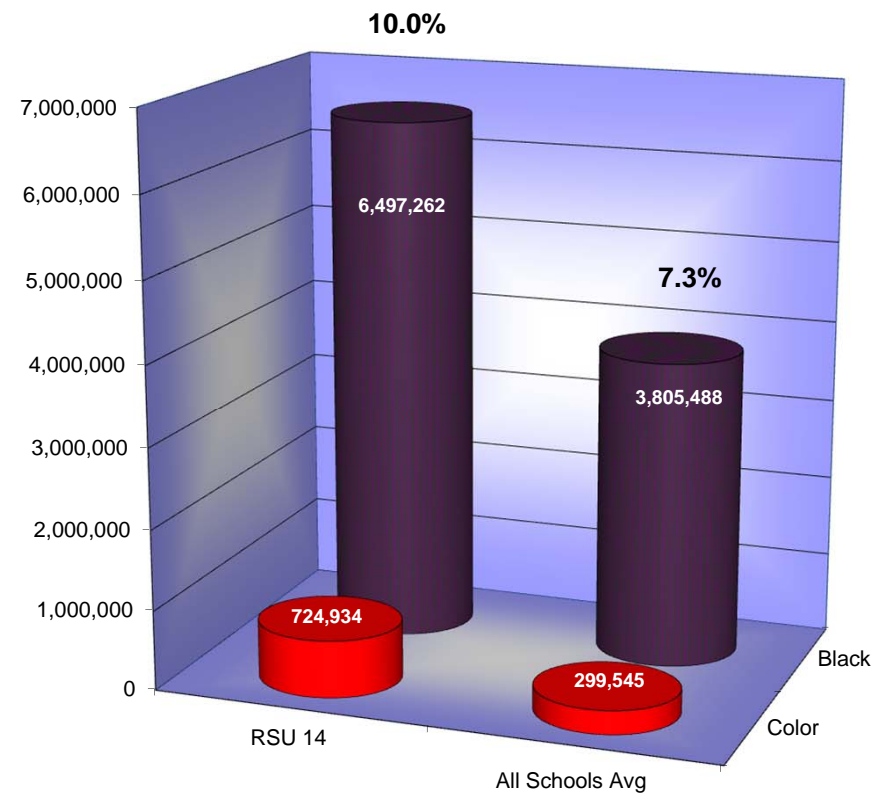
This is an SPC Comparison contrasting your district with other client school districts throughout the states of Maine, New Hampshire, and Vermont. By comparing to the Average Student to Copy Usage, this will help you to set up future budgets if student populations increase or decrease within the district or if you plan to build an addition or a new school.

	Total Student Population	Total Annual Volume	Total District Cost*	Annual Copies Per Student	Annual Cost Per Student
All Schools w/Student Populations	88,906	16,474,996	\$820,060.24	185	\$9.22

* Total District Cost refers to the cost of Service and Supplies only; paper and equipment costs are calculated into the Black Comparison chart.



Color to Total Volume Percentage



Usage Profile for Service & Supplies

The usage analysis shown here provides an overview of the usage of each piece of equipment currently under contract and monitored by SPC. Projected Volume comparison is based on projected volume figured on your most recent Five-Year Equipment Replacement Schedule.

Make-Model / Speed Serial Number / Vendor ID Life / Intro Date Vendor					Date of Last Upgrade: 9/15/2016	
	7/1/2017 Meter	6/30/2018 Meter	2017-18 Annual Volume	Cost/Copy Annual Cost	Recommendations	
FIELD ALLEN SCHOOL						
Office						
HP Laser Jet Pro M401dn / 35 PPM VNB3N04790 / 750,000 / 06/2012 Black Network Printer	39,348 0	41,078 0	1,730 0	\$0.014160 \$24.50 \$0.00000 \$0.00	None at this time.	
AXIS						
Toshiba e-Studio 3555c / 35 PPM C7CF59054 / 6442 750,000 / 07/2013 Color Photocopier	16,510 11,106	28,935 27,355	12,425 16,249	\$0.003500 \$43.49 \$0.04440 \$721.46	None at this time.	
A-COPI						
Toshiba e-Studio 756 / 75 PPM CKE210719 / 3108 4,000,000 / 02/2012 Black Photocopier	750,966 0	777,014 0	26,048 0	\$0.003700 \$96.38 \$0.00000 \$0.00	None at this time.	
A-COPI						

<i>Make-Model / Speed</i> <i>Serial Number / Vendor ID</i> <i>Life / Intro Date</i> <i>Vendor</i>					<i>Date of Last Upgrade: 9/15/2016</i> <i>2017-18</i> <i>Annual</i> <i>Volume</i>		<i>Cost/Copy</i> <i>Annual Cost</i>	<i>Recommendations</i>
	7/1/2017 Meter	6/30/2018 Meter						
FIELD ALLEN SCHOOL								
Outside FA Office								
Toshiba e-Studio 7508A / 75 PPM CIHF11140 / 6582 4,000,000 / 07/2016 Black Photocopier A-COPI	113,028 0	304,995 0	191,967 0	\$0.003500 \$671.88 \$0.00000 \$0.00				None at this time.
Peter Mullen's Office								
HP Laser Jet Pro M401dn / 35 PPM VNG4N01770 / 750,000 / 06/2012 Black Network Printer AXIS	744 0	2,377 0	1,633 0	\$0.014160 \$23.12 \$0.00000 \$0.00				None at this time.
Room 02								
HP Laser Jet Pro M401dn / 35 PPM VNB3N04792 / 750,000 / 06/2012 Black Network Printer AXIS	19,218 0	26,707 0	7,489 0	\$0.014160 \$106.04 \$0.00000 \$0.00				None at this time.
Room 04								
HP Laser Jet Pro M401dn / 35 PPM VNB3N04786 / 750,000 / 06/2012 Black Network Printer AXIS	23,747 0	29,500 0	5,753 0	\$0.014160 \$81.46 \$0.00000 \$0.00				None at this time.

<i>Make-Model / Speed Serial Number / Vendor ID Life / Intro Date</i>				<i>Date of Last Upgrade: 9/15/2016</i>	
<i>Vendor</i>	<i>7/1/2017 Meter</i>	<i>6/30/2018 Meter</i>	<i>2017-18 Annual Volume</i>	<i>Cost/Copy Annual Cost</i>	<i>Recommendations</i>
FIELD ALLEN SCHOOL					
Room 05					
HP Laser Jet Pro M401dn / 35 PPM	35,621	44,589	8,968	\$0.014160	None at this time.
VNB3N04856 /				\$126.99	
750,000 / 06/2012	0	0	0	\$0.00000	
Black Network Printer				\$0.00	
AXIS					
Room 08					
HP Laser Jet Pro M401dn / 35 PPM	28,152	34,807	6,655	\$0.014160	None at this time.
VNB3N04659 /				\$94.23	
750,000 / 06/2012	0	0	0	\$0.00000	
Black Network Printer				\$0.00	
AXIS					
Room 09					
HP Laser Jet Pro M401dn / 35 PPM	29,386	35,946	6,560	\$0.014160	None at this time.
VNB3N04652 /				\$92.89	
750,000 / 06/2012	0	0	0	\$0.00000	
Black Network Printer				\$0.00	
AXIS					
Room 10					
HP Laser Jet Pro M401dn / 35 PPM	9,550	12,072	2,522	\$0.014160	None at this time.
VNB4F00041 /				\$35.71	
750,000 / 06/2012	0	0	0	\$0.00000	
Black Network Printer				\$0.00	
AXIS					

Make-Model / Speed Serial Number / Vendor ID Life / Intro Date Vendor					Date of Last Upgrade: 9/15/2016	
	7/1/2017 Meter	6/30/2018 Meter	2017-18 Annual Volume	Cost/Copy Annual Cost	Recommendations	
FIELD ALLEN SCHOOL						
Room 12						
HP Laser Jet Pro M402dn / 40 PPM JPBDY16965 / 1,000,000 / 10/2015 Black Network Printer AXIS	1,800 0	5,551 0	3,751 0	\$0.028750 \$107.84 \$0.00000 \$0.00	None at this time.	
Teachers' Work Room						
HP Laser Jet Pro M401dn / 35 PPM VNB4M00084 / 750,000 / 06/2012 Black Network Printer AXIS	34,450 0	34,576 0	126 0	\$0.014160 \$1.78 \$0.00000 \$0.00	Underused!	
Subtotals Black			275,627	\$1,506.32		
Subtotals Color			16,249	\$721.46		

Date of Last Upgrade: 9/15/2016					
Make-Model / Speed					
Serial Number / Vendor ID			2017-18		
Life / Intro Date	7/1/2017	6/30/2018	Annual	Cost/Copy	
Vendor	Meter	Meter	Volume	Annual Cost	
Recommendations					
JORDAN-SMALL MIDDLE					
Library					
HP Laser Jet Pro M402dn / 40 PPM	1,371	6,307	4,936	\$0.028750	None at this time.
PHBQC41374 /				\$141.91	
1,000,000 / 10/2015	0	0	0	\$0.00000	
Black Network Printer				\$0.00	
AXIS					
Main Office					
Toshiba e-Studio 6506AC / 65 PPM	50,323	111,767	61,444	\$0.003500	None at this time.
CHHF11124 / 6591				\$215.05	
4,000,000 / 07/2016	32,579	79,895	47,316	\$0.04440	
Color Photocopier				\$2,100.83	
A-COPI					
Room A-103					
Toshiba e-Studio 456 / 45 PPM	471,229	488,439	17,210	\$0.003700	None at this time.
C2D236055 / 3091				\$63.68	
1,000,000 / 02/2012	0	0	0	\$0.00000	
Black Photocopier				\$0.00	
A-COPI					
Room A105					
HP Laser Jet Pro M401dn / 35 PPM	92,347	95,265	2,918	\$0.014160	None at this time.
VNB3X04622 /				\$41.32	
750,000 / 06/2012	0	0	0	\$0.00000	
Black Network Printer				\$0.00	
AXIS					

<i>Make-Model / Speed Serial Number / Vendor ID Life / Intro Date</i>				<i>Date of Last Upgrade: 9/15/2016</i>	
<i>Vendor</i>	<i>7/1/2017 Meter</i>	<i>6/30/2018 Meter</i>	<i>2017-18 Annual Volume</i>	<i>Cost/Copy Annual Cost</i>	<i>Recommendations</i>
JORDAN-SMALL MIDDLE					
Room A110					
HP Laser Jet Pro M401dn / 35 PPM VNB3N04787 / 750,000 / 06/2012 Black Network Printer AXIS	536 0	1,153 0	617 0	\$0.014160 \$8.74 \$0.00000 \$0.00	None at this time.
Room B105					
HP Laser Jet Pro M401dn / 35 PPM VNB4F00028 / 750,000 / 06/2012 Black Network Printer AXIS	190 0	360 0	170 0	\$0.014160 \$2.41 \$0.00000 \$0.00	Underused!
Room B110					
HP Laser Jet Pro M401dn / 35 PPM VNB4M00090 / 750,000 / 06/2012 Black Network Printer AXIS	21,833 0	22,679 0	846 0	\$0.014160 \$11.98 \$0.00000 \$0.00	None at this time.
Room B112 Tech Office					
HP Laser Jet Pro M401dne / 35 PPM PHGFD48781 / 750,000 / 01/2013 Black Network Printer AXIS	21,049 0	23,166 0	2,117 0	\$0.014160 \$29.98 \$0.00000 \$0.00	None at this time.

<i>Make-Model / Speed</i>	<i>Date of Last Upgrade: 9/15/2016</i>				
<i>Serial Number / Vendor ID</i>					
<i>Life / Intro Date</i>					
<i>Vendor</i>	<i>7/1/2017 Meter</i>	<i>6/30/2018 Meter</i>	<i>2017-18 Annual Volume</i>	<i>Cost/Copy Annual Cost</i>	<i>Recommendations</i>
JORDAN-SMALL MIDDLE					
Room C113 Transportation Office					
HP Laser Jet Pro M401dn / 35 PPM	96,036	96,146	110	\$0.014160	Underused!
VNB3H07016 /				\$1.56	
750,000 / 06/2012	0	0	0	\$0.00000	
Black Network Printer				\$0.00	
AXIS					
Room C126					
Toshiba e-Studio 7508A / 75 PPM	35,795	99,340	63,545	\$0.003500	None at this time.
CIHF11097 / 6576				\$222.41	
4,000,000 / 07/2016	0	0	0	\$0.00000	
Black Photocopier				\$0.00	
A-COPI					
Room C128 Music					
HP Laser Jet Pro M401dn / 35 PPM	58,343	58,345	2	\$0.014160	Underused!
VNB4F00034 /				\$0.03	
750,000 / 06/2012	0	0	0	\$0.00000	
Black Network Printer				\$0.00	
AXIS					
Teachers' Work Room					
Toshiba e-Studio 856 / 85 PPM	685,200	809,007	123,807	\$0.003700	None at this time.
CRD210791 / 3036				\$458.09	
4,000,000 / 02/2012	0	0	0	\$0.00000	
Black Photocopier				\$0.00	
A-COPI					

					Date of Last Upgrade: 9/15/2016	
Make-Model / Speed			2017-18			
Serial Number / Vendor ID						
Life / Intro Date	7/1/2017	6/30/2018	Annual	Cost/Copy		
Vendor	Meter	Meter	Volume	Annual Cost	Recommendations	
JORDAN-SMALL MIDDLE						
	Subtotals Black		277,722	\$1,197.14		
	Subtotals Color		47,316	\$2,100.83		

<i>Make-Model / Speed Serial Number / Vendor ID Life / Intro Date Vendor</i>					<i>Date of Last Upgrade: 9/15/2016</i>	
	<i>7/1/2017 Meter</i>	<i>6/30/2018 Meter</i>	<i>2017-18 Annual Volume</i>	<i>Cost/Copy Annual Cost</i>	<i>Recommendations</i>	
KATAHDIN PROGRAM						
Main Office						
Toshiba e-Studio 3040c / 30 PPM	266,816	280,346	13,530	\$0.004000	7 years from Intro.	
CND219478 / 3097				\$54.12		
750,000 / 05/2011	197,539	211,762	14,223	\$0.04995		
Color Photocopier				\$710.44		
A-COPI						
Subtotals Black			13,530	\$54.12		
Subtotals Color			14,223	\$710.44		

<i>Make-Model / Speed Serial Number / Vendor ID Life / Intro Date Vendor</i>					<i>Date of Last Upgrade: 9/15/2016</i>	
	<i>7/1/2017 Meter</i>	<i>6/30/2018 Meter</i>	<i>2017-18 Annual Volume</i>	<i>Cost/Copy Annual Cost</i>	<i>Recommendations</i>	
MANCHESTER SCHOOL						
<i>Administration Office</i>						
HP Laser Jet Pro M401dn / 35 PPM VNB3H07012 / 750,000 / 06/2012 Black Network Printer AXIS	4,473 0	4,990 0	517 0	\$0.014160 \$7.32 \$0.00000 \$0.00	None at this time.	
<i>Assistant Principal</i>						
HP Laser Jet Pro M401dn / 35 PPM VNB3H07015 / 750,000 / 06/2012 Black Network Printer AXIS	2,793 0	4,028 0	1,235 0	\$0.014160 \$17.49 \$0.00000 \$0.00	None at this time.	

<i>Make-Model / Speed Serial Number / Vendor ID Life / Intro Date</i>				<i>Date of Last Upgrade: 9/15/2016</i>	
<i>Vendor</i>	<i>7/1/2017 Meter</i>	<i>6/30/2018 Meter</i>	<i>2017-18 Annual Volume</i>	<i>Cost/Copy Annual Cost</i>	<i>Recommendations</i>
MANCHESTER SCHOOL					
Copy Room					
HP Laser Jet Pro M402dn / 40 PPM JPBDY16959 / 1,000,000 / 10/2015 Black Network Printer AXIS	20,198 0	50,448 0	30,250 0	\$0.028750 \$869.69 \$0.00000 \$0.00	None at this time.
Toshiba e-Studio 8508A / 85 PPM CIHF12145 / 6538 5,000,000 / 07/2016 Black Photocopier A-COPI	179,768 0	492,811 0	313,043 0	\$0.003500 \$1,095.65 \$0.00000 \$0.00	None at this time.
Toshiba e-Studio 8508A / 85 PPM CIHF11740 / 6532 5,000,000 / 07/2016 Black Photocopier A-COPI	185,842 0	479,644 0	293,802 0	\$0.003500 \$1,028.31 \$0.00000 \$0.00	None at this time.
Copy Room Center					
Toshiba e-Studio 8508A / 85 PPM CIHF11765 / 6546 5,000,000 / 07/2016 Black Photocopier A-COPI	126,460 0	335,976 0	209,516 0	\$0.003500 \$733.31 \$0.00000 \$0.00	None at this time.

<i>Make-Model / Speed Serial Number / Vendor ID Life / Intro Date</i>				<i>Date of Last Upgrade: 9/15/2016</i>	
<i>Vendor</i>	<i>7/1/2017 Meter</i>	<i>6/30/2018 Meter</i>	<i>2017-18 Annual Volume</i>	<i>Cost/Copy Annual Cost</i>	<i>Recommendations</i>
MANCHESTER SCHOOL					
Lab 2					
HP Laser Jet Pro M401dn / 35 PPM VNB3B07038 / 750,000 / 06/2012 Black Network Printer AXIS	57,807 0	58,557 0	750 0	\$0.014160 \$10.62 \$0.00000 \$0.00	None at this time.
Main Office Work Room					
Toshiba e-Studio 5506AC / 55 PPM CHHF11007 / 6537 3,000,000 / 07/2016 Color Photocopier A-COPI	18,805 22,581	50,657 55,360	31,852 32,779	\$0.003500 \$111.48 \$0.04440 \$1,455.39	None at this time.
Nurse's Office					
HP Laser Jet Pro M401dn / 35 PPM VNB3B07036 / 750,000 / 06/2012 Black Network Printer AXIS	7,845 0	8,371 0	526 0	\$0.014160 \$7.45 \$0.00000 \$0.00	None at this time.
Principal's Office					
HP Laser Jet Pro M401dn / 35 PPM VNB3H07014 / 750,000 / 06/2012 Black Network Printer AXIS	3,576 0	4,281 0	705 0	\$0.014160 \$9.98 \$0.00000 \$0.00	None at this time.

<i>Make-Model / Speed Serial Number / Vendor ID Life / Intro Date</i>				<i>Date of Last Upgrade: 9/15/2016</i>	
<i>Vendor</i>	<i>7/1/2017 Meter</i>	<i>6/30/2018 Meter</i>	<i>2017-18 Annual Volume</i>	<i>Cost/Copy Annual Cost</i>	<i>Recommendations</i>
MANCHESTER SCHOOL					
Room 134					
HP Laser Jet Pro M401dn / 35 PPM	34,833	44,764	9,931	\$0.014160	None at this time.
VNB3H06983 /				\$140.62	
750,000 / 06/2012	0	0	0	\$0.00000	
Black Network Printer				\$0.00	
AXIS					
Room 137					
HP Laser Jet Pro M402dn / 40 PPM	10,511	28,491	17,980	\$0.028750	None at this time.
JPBDY16957 /				\$516.93	
1,000,000 / 10/2015	0	0	0	\$0.00000	
Black Network Printer				\$0.00	
AXIS					
Room 140					
HP Color Laser Jet M452dn / 28 PPM	585	2,408	1,823	\$0.028750	None at this time.
VNB3B32475 /				\$52.41	
500,000 / 10/2015	2,823	6,064	3,241	\$0.14875	
Color Network Printer				\$482.10	
AXIS					
Room 174 Special Education					
HP Color Laser Jet M452dn / 28 PPM	1,242	4,935	3,693	\$0.028750	None at this time.
VNB3B32479 /				\$106.17	
500,000 / 10/2015	6,546	15,998	9,452	\$0.14875	
Color Network Printer				\$1,405.99	
AXIS					

Make-Model / Speed Serial Number / Vendor ID Life / Intro Date					Date of Last Upgrade: 9/15/2016	
Vendor	7/1/2017 Meter	6/30/2018 Meter	2017-18 Annual Volume	Cost/Copy Annual Cost	Recommendations	
MANCHESTER SCHOOL						
Room 177						
HP Color Laser Jet M452dn / 28 PPM VNB3B32476 / 500,000 / 10/2015 Color Network Printer AXIS	341 1,899	2,903 4,634	2,562 2,735	\$0.028750 \$73.66 \$0.14875 \$406.83	None at this time.	
Room 178						
HP Laser Jet Pro M401dn / 35 PPM VNB3X04628 / 750,000 / 06/2012 Black Network Printer AXIS	32,892 0	37,779 0	4,887 0	\$0.014160 \$69.20 \$0.00000 \$0.00	None at this time.	
Room 183						
HP Laser Jet Pro M402dn / 40 PPM JPBDY16950 / 1,000,000 / 10/2015 Black Network Printer AXIS	1,002 0	5,537 0	4,535 0	\$0.028750 \$130.38 \$0.00000 \$0.00	None at this time.	
Special Education Resource Room						
Toshiba e-Studio 4540c / 45 PPM CMD218320 / 3101 1,000,000 / 05/2011 Color Photocopier A-COPI	172,271 166,710	197,896 196,370	25,625 29,660	\$0.004000 \$102.50 \$0.04995 \$1,481.52	7 years from Intro.	

<i>Make-Model / Speed</i>				<i>Date of Last Upgrade: 9/15/2016</i>	
<i>Serial Number / Vendor ID</i>					
<i>Life / Intro Date</i>					
<i>Vendor</i>	<i>7/1/2017</i>	<i>6/30/2018</i>	<i>2017-18</i>	<i>Cost/Copy</i>	<i>Recommendations</i>
	<i>Meter</i>	<i>Meter</i>	<i>Annual</i>	<i>Annual Cost</i>	
MANCHESTER SCHOOL					
Subtotals Black			953,232	\$5,083.16	
Subtotals Color			77,867	\$5,231.82	

<i>Make-Model / Speed</i> <i>Serial Number / Vendor ID</i> <i>Life / Intro Date</i> <i>Vendor</i>					<i>Date of Last Upgrade: 9/15/2016</i> <i>2017-18</i> <i>Annual</i> <i>Volume</i>		<i>Cost/Copy</i> <i>Annual Cost</i>	<i>Recommendations</i>
	7/1/2017	6/30/2018						
	Meter	Meter						
RAYMOND ELEMENTARY								
Copy Room 2nd Floor								
Toshiba e-Studio 7508A / 75 PPM	57,035	142,635	85,600			\$0.003500	None at this time.	
CIHF11037 / 6545						\$299.60		
4,000,000 / 07/2016	0	0	0			\$0.000000		
Black Photocopier						\$0.00		
A-COPI								
Main Office								
Toshiba e-Studio 5506AC / 55 PPM	28,679	69,506	40,827			\$0.003500	None at this time.	
CHIF11286 / 6536						\$142.89		
3,000,000 / 07/2016	32,485	96,566	64,081			\$0.044440		
Color Photocopier						\$2,845.20		
A-COPI								
Old Supt Office								
HP Laser Jet Pro M402dn / 40 PPM	3,071	10,081	7,010			\$0.028750	None at this time.	
JPBDY16953 /						\$201.54		
1,000,000 / 10/2015	0	0	0			\$0.000000		
Black Network Printer						\$0.00		
AXIS								
Old Supt Office - NOT IN USE								
HP Laser Jet 400 M401n / 35 PPM	1,472	1,472	0			\$0.028750	None at this time.	
VNB3N13281 /						\$0.00		
750,000 / 01/2013	0	0	0			\$0.000000		
Black Network Printer						\$0.00		
AXIS								

<i>Make-Model / Speed Serial Number / Vendor ID Life / Intro Date Vendor</i>				<i>Date of Last Upgrade: 9/15/2016</i>	
	<i>7/1/2017 Meter</i>	<i>6/30/2018 Meter</i>	<i>2017-18 Annual Volume</i>	<i>Cost/Copy Annual Cost</i>	<i>Recommendations</i>
RAYMOND ELEMENTARY					
Room A104					
HP Laser Jet Pro M402dn / 40 PPM JPBDY16947 / 1,000,000 / 10/2015 Black Network Printer AXIS	4,694 0	11,254 0	6,560 0	\$0.028750 \$188.60 \$0.00000 \$0.00	None at this time.
Room B211					
Toshiba e-Studio 556 / 55 PPM CGEC16793 / 6608 3,000,000 / 02/2012 Black Photocopier A-COPI	298,642 0	357,863 0	59,221 0	\$0.003700 \$219.12 \$0.00000 \$0.00	None at this time.
Work Room					
Toshiba e-studio 287CSL / 30 PPM TJGF12996 / 6531 750,000 / 07/2014 Color Photocopier A-COPI	4,403 38,444	6,674 96,406	2,271 57,962	\$0.003500 \$7.95 \$0.04440 \$2,573.51	None at this time.
Toshiba e-Studio 8508A / 85 PPM CIHF11767 / 6533 5,000,000 / 07/2016 Black Photocopier A-COPI	203,845 0	503,280 0	299,435 0	\$0.003500 \$1,048.02 \$0.00000 \$0.00	None at this time.
Subtotals Black			500,924	\$2,107.72	
Subtotals Color			122,043	\$5,418.71	

<i>Make-Model / Speed Serial Number / Vendor ID Life / Intro Date</i>					<i>Date of Last Upgrade: 9/15/2016</i>
<i>Vendor</i>	<i>7/1/2017 Meter</i>	<i>6/30/2018 Meter</i>	<i>2017-18 Annual Volume</i>	<i>Cost/Copy Annual Cost</i>	<i>Recommendations</i>
RSU 14 DISTRICT BLDG					
Administrative Assistant					
Samsung SCX-4623FW / 23 PPM	46,860	47,662	802	\$0.032800	8 years from Intro.
Z4YSBFFB502059K /				\$26.31	
500,000 / 06/2010	0	0	0	\$0.00000	
Black Laser MFP				\$0.00	
SPC					
Asst. Superintendent - Donn Davis					
HP Laser Jet Pro M401dn / 35 PPM	1,704	4,995	3,291	\$0.014160	None at this time.
VNB4M00087 /				\$46.60	
750,000 / 06/2012	0	0	0	\$0.00000	
Black Network Printer				\$0.00	
AXIS					
Copy Room					
HP Color Laser Jet M452dn / 28 PPM	6,177	24,049	17,872	\$0.028750	None at this time.
VNB3B32480 /				\$513.82	
500,000 / 10/2015	8,100	13,068	4,968	\$0.14875	
Color Network Printer				\$738.99	
AXIS					
Copy Room - Check Printer					
HP Laser Jet 600 M602 / 52 PPM	16,859	26,496	9,637	\$0.017380	7 years from Intro.
CNCCG580X6 /				\$167.49	
3,000,000 / 11/2011	0	0	0	\$0.00000	
Black Network Printer				\$0.00	
AXIS					

<i>Make-Model / Speed Serial Number / Vendor ID Life / Intro Date</i>				<i>Date of Last Upgrade: 9/15/2016</i>	
<i>Vendor</i>	<i>7/1/2017 Meter</i>	<i>6/30/2018 Meter</i>	<i>2017-18 Annual Volume</i>	<i>Cost/Copy Annual Cost</i>	<i>Recommendations</i>
RSU 14 DISTRICT BLDG					
Copy Room Left					
Toshiba e-Studio 7508A / 75 PPM CIHF11074 / 6580 4,000,000 / 07/2016 Black Photocopier A-COPI	84,701 0	225,554 0	140,853 0	\$0.003500 \$492.99 \$0.000000 \$0.00	None at this time.
Copy Room Supt. Wing					
Toshiba e-Studio 5506AC / 55 PPM CHHF11244 / 6590 3,000,000 / 07/2016 Color Photocopier A-COPI	12,500 27,129	26,718 55,582	14,218 28,453	\$0.003500 \$49.76 \$0.044440 \$1,263.31	None at this time.
Curriculum Directors Office					
HP Color Laser Jet M452dn / 28 PPM VNB3B32481 / 500,000 / 10/2015 Color Network Printer AXIS	1,751 4,402	5,062 9,034	3,311 4,632	\$0.028750 \$95.19 \$0.14875 \$689.01	None at this time.
Facilities Director - Bill Hansen					
Samsung SCX-4623FW / 23 PPM Z4YSBFFZA00004Z / 500,000 / 06/2010 Black Laser MFP SPC	11,989 0	14,130 0	2,141 0	\$0.032800 \$70.22 \$0.000000 \$0.00	8 years from Intro.

<i>Make-Model / Speed</i>	<i>Date of Last Upgrade: 9/15/2016</i>				
<i>Serial Number / Vendor ID</i>					
<i>Life / Intro Date</i>					
<i>Vendor</i>	<i>7/1/2017 Meter</i>	<i>6/30/2018 Meter</i>	<i>2017-18 Annual Volume</i>	<i>Cost/Copy Annual Cost</i>	<i>Recommendations</i>
RSU 14 DISTRICT BLDG					
Human Resources					
Samsung SCX-4623FW / 23 PPM	51,930	58,135	6,205	\$0.032800	8 years from Intro.
Z4YSBFFB200750P /				\$203.52	
500,000 / 06/2010	0	0	0	\$0.00000	
Black Laser MFP				\$0.00	
SPC					
IT Director - Bob Hickey					
Samsung SCX-4623FW / 23 PPM	8,648	10,209	1,561	\$0.032800	8 years from Intro.
Z4YSBFFB200760Z /				\$51.20	
500,000 / 06/2010	0	0	0	\$0.00000	
Black Laser MFP				\$0.00	
SPC					
IT Storage					
Samsung SCX-4623FW / 23 PPM	11,268	11,632	364	\$0.032800	8 years from Intro.
Z4YSBFFB501025E /				\$11.94	
500,000 / 06/2010	0	0	0	\$0.00000	
Black Laser MFP				\$0.00	
SPC					
Office					
HP Color Laser Jet M452dn / 28 PPM	24	106	82	\$0.028750	None at this time.
VNB3B32483 /				\$2.36	
500,000 / 10/2015	574	914	340	\$0.14875	
Color Network Printer				\$50.58	
AXIS					

Make-Model / Speed Serial Number / Vendor ID Life / Intro Date				Date of Last Upgrade: 9/15/2016	
Vendor	7/1/2017 Meter	6/30/2018 Meter	2017-18 Annual Volume	Cost/Copy Annual Cost	Recommendations
RSU 14 DISTRICT BLDG					
Payroll					
Samsung SCX-4623FW / 23 PPM	31,870	36,140	4,270	\$0.032800	8 years from Intro.
Z4YSBFFB900602A /				\$140.06	
500,000 / 06/2010	0	0	0	\$0.00000	
Black Laser MFP				\$0.00	
SPC					
Reception					
HP Laser Jet Pro M401dn / 35 PPM	2,653	7,664	5,011	\$0.014160	None at this time.
VNB3N04865 /				\$70.96	
750,000 / 06/2012	0	0	0	\$0.00000	
Black Network Printer				\$0.00	
AXIS					
Samsung SCX-4623FW / 23 PPM	25,992	26,811	819	\$0.032800	8 years from Intro.
Z4YSBFFZC01086E /				\$26.86	
500,000 / 06/2010	0	0	0	\$0.00000	
Black Laser MFP				\$0.00	
SPC					
SEA & Food Services Asst, 2nd Floor					
Toshiba e-Studio 456 / 45 PPM	85,754	114,659	28,905	\$0.003700	None at this time.
C2D235912 / 3089				\$106.95	
1,000,000 / 02/2012	0	0	0	\$0.00000	
Black Photocopier				\$0.00	
A-COPI					

Make-Model / Speed Serial Number / Vendor ID Life / Intro Date Vendor					Date of Last Upgrade: 9/15/2016	
	7/1/2017 Meter	6/30/2018 Meter	2017-18 Annual Volume	Cost/Copy Annual Cost	Recommendations	
RSU 14 DISTRICT BLDG						
Student Services Assistant						
HP Color Laser Jet M452dn / 28 PPM VNB3B32474 / 500,000 / 10/2015 Color Network Printer AXIS	1,737 3,330	4,189 9,377	2,452 6,047	\$0.028750 \$70.50 \$0.14875 \$899.49	Shift this color volume to a copier to reduce costs.	
HP Laser Jet Pro M402dn / 40 PPM JPBDY16983 / 1,000,000 / 10/2015 Black Network Printer AXIS	1,380 0	4,544 0	3,164 0	\$0.028750 \$90.97 \$0.00000 \$0.00		
Student Services Director						
HP Color Laser Jet M452dn / 28 PPM VNB3B32473 / 500,000 / 10/2015 Color Network Printer AXIS	10 4,743	73 12,760	63 8,017	\$0.028750 \$1.81 \$0.14875 \$1,192.53	Shift this color volume to a copier to reduce costs.	
HP Laser Jet Pro M401dn / 35 PPM VNB4F00022 / 750,000 / 06/2012 Black Network Printer AXIS	3,375 0	6,245 0	2,870 0	\$0.014160 \$40.64 \$0.00000 \$0.00		
Subtotals Black			247,891	\$2,280.14		
Subtotals Color			52,457	\$4,833.91		

Make-Model / Speed Serial Number / Vendor ID Life / Intro Date Vendor					Date of Last Upgrade: 9/15/2016	
	7/1/2017 Meter	6/30/2018 Meter	2017-18 Annual Volume	Cost/Copy Annual Cost	Recommendations	
RSU 14 SCHOOL TRANSPORTATION						
Main Office						
HP Color Laser Jet M452dn / 28 PPM VNB3B32478 / 500,000 / 10/2015 Color Network Printer	25 41	174 250	149 209	\$0.028750 \$4.28 \$0.14875 \$31.09	None at this time.	
AXIS						
Toshiba e-Studio 3040c / 30 PPM CNB326928 / 750,000 / 05/2011 Color Photocopier	94,199 52,562	108,018 53,368	13,819 806	\$0.004000 \$55.28 \$0.04995 \$40.26		
A-COPI						
Subtotals Black			13,968	\$59.56		
Subtotals Color			1,015	\$71.35		

<i>Make-Model / Speed Serial Number / Vendor ID Life / Intro Date</i>				<i>Date of Last Upgrade: 9/15/2016</i>	
<i>Vendor</i>	<i>7/1/2017 Meter</i>	<i>6/30/2018 Meter</i>	<i>2017-18 Annual Volume</i>	<i>Cost/Copy Annual Cost</i>	<i>Recommendations</i>
WINDHAM HIGH					
Adult Education - Shelly Pride					
HP Laser Jet Pro M401dn / 35 PPM	9,878	11,673	1,795	\$0.014160	None at this time.
VNB4F00018 /				\$25.42	
750,000 / 06/2012	0	0	0	\$0.00000	
Black Network Printer				\$0.00	
AXIS					
Adult Education - Stacia					
HP Laser Jet Pro M401dn / 35 PPM	43,226	45,182	1,956	\$0.014160	None at this time.
VNB3N04864 /				\$27.70	
750,000 / 06/2012	0	0	0	\$0.00000	
Black Network Printer				\$0.00	
AXIS					
Adult Education Computer Lab					
HP Laser Jet Pro M401dn / 35 PPM	12,304	14,393	2,089	\$0.014160	None at this time.
VNB4F00026 /				\$29.58	
750,000 / 06/2012	0	0	0	\$0.00000	
Black Network Printer				\$0.00	
AXIS					
Adult Education Front Desk					
HP Laser Jet Pro M402dn / 40 PPM	2,728	5,986	3,258	\$0.028750	None at this time.
PHBQC41397 /				\$93.67	
1,000,000 / 10/2015	0	0	0	\$0.00000	
Black Network Printer				\$0.00	
AXIS					

<i>Make-Model / Speed Serial Number / Vendor ID Life / Intro Date Vendor</i>				<i>Date of Last Upgrade: 9/15/2016</i>	
	<i>7/1/2017 Meter</i>	<i>6/30/2018 Meter</i>	<i>2017-18 Annual Volume</i>	<i>Cost/Copy Annual Cost</i>	<i>Recommendations</i>
WINDHAM HIGH					
Adult Education Learning Center					
HP Color Laser Jet M452dn / 28 PPM VNB3M37235 / 500,000 / 10/2015 Color Network Printer AXIS	266 948	939 3,286	673 2,338	\$0.028750 \$19.35 \$0.14875 \$347.78	None at this time.
Adult Education Lobby					
Toshiba e-Studio 4505AC / 45 PPM CFGF44639 / 6449 1,000,000 / 07/2016 Color Photocopier A-COPI	18,440 8,719	63,659 38,084	45,219 29,365	\$0.003500 \$158.27 \$0.04440 \$1,303.81	None at this time.
Adult Education Office - Kathy					
HP Laser Jet Pro M401dn / 35 PPM VNB4F00029 / 750,000 / 06/2012 Black Network Printer AXIS	12,839 0	16,085 0	3,246 0	\$0.014160 \$45.96 \$0.00000 \$0.00	None at this time.
Art Room 304					
HP Color Laser Jet M452dn / 28 PPM VNB3M37238 / 500,000 / 10/2015 Color Network Printer AXIS	1,587 3,126	2,970 5,828	1,383 2,702	\$0.028750 \$39.76 \$0.14875 \$401.92	None at this time.

Make-Model / Speed Serial Number / Vendor ID Life / Intro Date					Date of Last Upgrade: 9/15/2016	
Vendor	7/1/2017 Meter	6/30/2018 Meter	2017-18 Annual Volume	Cost/Copy Annual Cost	Recommendations	
WINDHAM HIGH						
Assistant Principal - Rosetti						
HP Laser Jet Pro M401dn / 35 PPM VNB3N04797 / 750,000 / 06/2012 Black Network Printer AXIS	16,017 0	18,420 0	2,403 0	\$0.014160 \$34.03 \$0.00000 \$0.00	None at this time.	
Athletic Department Admin						
Samsung SCX-4623FW / 23 PPM Z4YSBFFB102606X / 500,000 / 06/2010 Black Laser MFP SPC	14,361 0	14,411 0	50 0	\$0.032800 \$1.64 \$0.00000 \$0.00	8 years from Intro. Underused!	
Athletics Office						
Toshiba e-Studio 3555c / 35 PPM C7CF58856 / 6223 750,000 / 07/2013 Color Photocopier A-COPI	15,145 1,290	43,724 3,647	28,579 2,357	\$0.003500 \$100.03 \$0.04440 \$104.65	None at this time.	
Blue Café						
HP Laser Jet Pro M401dn / 35 PPM VNB3N04857 / 750,000 / 06/2012 Black Network Printer AXIS	8,829 0	14,485 0	5,656 0	\$0.014160 \$80.09 \$0.00000 \$0.00	None at this time.	

<i>Make-Model / Speed Serial Number / Vendor ID Life / Intro Date</i>					<i>Date of Last Upgrade: 9/15/2016</i>	
<i>Vendor</i>	<i>7/1/2017 Meter</i>	<i>6/30/2018 Meter</i>	<i>2017-18 Annual Volume</i>	<i>Cost/Copy Annual Cost</i>	<i>Recommendations</i>	
WINDHAM HIGH						
<i>Custodial Area - Scott</i>						
HP Laser Jet Pro M401dn / 35 PPM VNB3N04788 / 750,000 / 06/2012 Black Network Printer AXIS	2,844 0	3,948 0	1,104 0	\$0.014160 \$15.63 \$0.00000 \$0.00	None at this time.	
<i>Faculty Office B</i>						
HP Laser Jet Pro M401dn / 35 PPM VNB4F00033 / 750,000 / 06/2012 Black Network Printer AXIS	71,480 0	92,665 0	21,185 0	\$0.014160 \$299.98 \$0.00000 \$0.00	None at this time.	
Toshiba e-Studio 8508A / 85 PPM CIIF11852 / 6588 5,000,000 / 07/2016 Black Photocopier A-COPI	176,100 0	449,041 0	272,941 0	\$0.003500 \$955.29 \$0.00000 \$0.00	None at this time.	

<i>Make-Model / Speed</i> <i>Serial Number / Vendor ID</i> <i>Life / Intro Date</i> <i>Vendor</i>					<i>Date of Last Upgrade: 9/15/2016</i> <i>2017-18</i> <i>Annual</i> <i>Volume</i>		<i>Cost/Copy</i> <i>Annual Cost</i>	<i>Recommendations</i>
	7/1/2017	6/30/2018						
	Meter	Meter						
WINDHAM HIGH								
Faculty Office E								
HP Laser Jet Pro M402dn / 40 PPM	11,693	30,452	18,759			\$0.028750		None at this time.
JPBDY10472 /						\$539.32		
1,000,000 / 10/2015	0	0	0			\$0.00000		
Black Network Printer						\$0.00		
AXIS								
Toshiba e-Studio 756 / 75 PPM	845,831	924,349	78,518			\$0.003700		None at this time.
CKE210656 / 3114						\$290.52		
4,000,000 / 02/2012	0	0	0			\$0.00000		
Black Photocopier						\$0.00		
A-COPI								
Faculty Office K								
Toshiba e-Studio 8508A / 85 PPM	131,629	344,174	212,545			\$0.003500		None at this time.
CIIF11808 / 6587						\$743.91		
5,000,000 / 07/2016	0	0	0			\$0.00000		
Black Photocopier						\$0.00		
A-COPI								
Faculty Office K - Copier								
Toshiba e-Studio 3555c / 35 PPM	23,840	49,824	25,984			\$0.003500		None at this time.
C7CF58845 / 6459						\$90.94		
750,000 / 07/2013	25,628	65,401	39,773			\$0.04440		
Color Photocopier						\$1,765.92		
A-COPI								

Make-Model / Speed Serial Number / Vendor ID Life / Intro Date					Date of Last Upgrade: 9/15/2016	
Vendor	7/1/2017 Meter	6/30/2018 Meter	2017-18 Annual Volume	Cost/Copy Annual Cost	Recommendations	
WINDHAM HIGH						
Faculty Office K - HP Printer						
HP Laser Jet Pro M401dn / 35 PPM VNB4F00035 / 750,000 / 06/2012	47,053 0	47,722 0	669 0	\$0.014160 \$9.47 \$0.00000	None at this time.	
Black Network Printer AXIS				\$0.00		
Faculty Office M - Math Department						
HP Laser Jet Pro M402dn / 40 PPM JPBDY10471 / 1,000,000 / 10/2015	23,387 0	38,203 0	14,816 0	\$0.028750 \$425.96 \$0.00000	None at this time.	
Black Network Printer AXIS				\$0.00		
Faculty Office M Math Department						
Toshiba e-Studio 8508A / 85 PPM CIIF12138 / 6586 5,000,000 / 07/2016	257,335 0	616,736 0	359,401 0	\$0.003500 \$1,257.90 \$0.00000	None at this time.	
Black Photocopier A-COPI				\$0.00		
Front Office Attendance Printer						
HP Laser Jet Pro M402dn / 40 PPM JPBDY10469 / 1,000,000 / 10/2015	10,850 0	23,921 0	13,071 0	\$0.028750 \$375.79 \$0.00000	None at this time.	
Black Network Printer AXIS				\$0.00		

Make-Model / Speed Serial Number / Vendor ID Life / Intro Date					Date of Last Upgrade: 9/15/2016	
Vendor	7/1/2017 Meter	6/30/2018 Meter	2017-18 Annual Volume	Cost/Copy Annual Cost	Recommendations	
WINDHAM HIGH						
Guidance Office Closet						
Toshiba e-Studio 5508A / 55 PPM CIIF12379 / 6593 2,000,000 / 08/2016 Black Photocopier A-COPI	20,092 0	47,777 0	27,685 0	\$0.003500 \$96.90 \$0.00000 \$0.00	None at this time.	
Jim Babcock						
HP Laser Jet Pro M401dn / 35 PPM VNB4F00042 / 750,000 / 06/2012 Black Network Printer AXIS	9,671 0	13,208 0	3,537 0	\$0.014160 \$50.08 \$0.00000 \$0.00	None at this time.	
Kitchen Back Office - Jackie						
HP Laser Jet Pro M401dn / 35 PPM VNB3N04850 / 750,000 / 06/2012 Black Network Printer AXIS	14,580 0	19,524 0	4,944 0	\$0.014160 \$70.01 \$0.00000 \$0.00	None at this time.	

Make-Model / Speed Serial Number / Vendor ID Life / Intro Date				Date of Last Upgrade: 9/15/2016	
Vendor	7/1/2017 Meter	6/30/2018 Meter	2017-18 Annual Volume	Cost/Copy Annual Cost	Recommendations
WINDHAM HIGH					
Library					
Toshiba e-Studio 3555c / 35 PPM C7CF58791 / 6460 750,000 / 07/2013 Color Photocopier A-COPI	8,892 23,062	27,188 55,335	18,296 32,273	\$0.003500 \$64.04 \$0.04440 \$1,432.92	None at this time.
Toshiba e-Studio 856 / 85 PPM CRD210777 / 3033 4,000,000 / 02/2012 Black Photocopier A-COPI	1,252,230 0	1,308,002 0	55,772 0	\$0.003700 \$206.36 \$0.00000 \$0.00	None at this time.
Library ASC					
HP Laser Jet Pro M401dn / 35 PPM VNB4M00089 / 750,000 / 06/2012 Black Network Printer AXIS	51,332 0	52,370 0	1,038 0	\$0.014160 \$14.70 \$0.00000 \$0.00	None at this time.
Library Copier					
HP Laser Jet Pro M402dn / 40 PPM JPBDY10462 / 1,000,000 / 10/2015 Black Network Printer AXIS	2,154 0	4,402 0	2,248 0	\$0.028750 \$64.63 \$0.00000 \$0.00	None at this time.

Make-Model / Speed Serial Number / Vendor ID Life / Intro Date Vendor					Date of Last Upgrade: 9/15/2016	
	7/1/2017 Meter	6/30/2018 Meter	2017-18 Annual Volume	Cost/Copy Annual Cost	Recommendations	
WINDHAM HIGH						
Main Office Large Copier						
Toshiba e-Studio 8508A / 85 PPM CIHF11778 / 6596 5,000,000 / 07/2016 Black Photocopier A-COPI	81,829 0	297,442 0	215,613 0	\$0.003500 \$754.65 \$0.00000 \$0.00	None at this time.	
Main Office Smaller Copier						
Toshiba e-Studio 4505AC / 45 PPM CFHF47150 / 6597 1,000,000 / 07/2016 Color Photocopier A-COPI	22,536 18,284	68,532 54,261	45,996 35,977	\$0.003500 \$160.99 \$0.04440 \$1,597.38	None at this time.	
Maintenance						
HP Laser Jet Pro M401dn / 35 PPM VNB3N04821 / 750,000 / 06/2012 Black Network Printer AXIS	91,680 0	92,011 0	331 0	\$0.014160 \$4.69 \$0.00000 \$0.00	Underused!	
Nurse's Office						
HP Laser Jet Pro M401dn / 35 PPM VNB4F00044 / 750,000 / 06/2012 Black Network Printer AXIS	8,050 0	9,616 0	1,566 0	\$0.014160 \$22.17 \$0.00000 \$0.00	None at this time.	

Make-Model / Speed Serial Number / Vendor ID Life / Intro Date Vendor					Date of Last Upgrade: 9/15/2016	
	7/1/2017 Meter	6/30/2018 Meter	2017-18 Annual Volume	Cost/Copy Annual Cost	Recommendations	
WINDHAM HIGH						
Pam's Printer						
Samsung SCX-4623FW / 23 PPM	11,775	13,532	1,757	\$0.032800	8 years from Intro.	
Z4YSBFFB801401E /				\$57.63		
500,000 / 06/2010	0	0	0	\$0.00000		
Black Laser MFP				\$0.00		
SPC						
Principal's Secretary - Fone						
HP Laser Jet Pro M401dn / 35 PPM	21,169	25,401	4,232	\$0.014160	None at this time.	
VNB4M00088 /				\$59.93		
750,000 / 06/2012	0	0	0	\$0.00000		
Black Network Printer				\$0.00		
AXIS						
Professional Library						
HP Laser Jet Pro M401dn / 35 PPM	2,777	2,817	40	\$0.014160	Underused!	
VNG4N01748 /				\$0.57		
750,000 / 06/2012	0	0	0	\$0.00000		
Black Network Printer				\$0.00		
AXIS						
Registrar - Amy Sullivan						
HP Laser Jet Pro M402dn / 40 PPM	8,180	14,798	6,618	\$0.028750	None at this time.	
JPBDY10474 /				\$190.27		
1,000,000 / 10/2015	0	0	0	\$0.00000		
Black Network Printer				\$0.00		
AXIS						

<i>Make-Model / Speed Serial Number / Vendor ID Life / Intro Date</i>				<i>Date of Last Upgrade: 9/15/2016</i>	
<i>Vendor</i>	<i>7/1/2017 Meter</i>	<i>6/30/2018 Meter</i>	<i>2017-18 Annual Volume</i>	<i>Cost/Copy Annual Cost</i>	<i>Recommendations</i>
WINDHAM HIGH					
Room 112					
HP Laser Jet Pro M401dn / 35 PPM	44,039	45,459	1,420	\$0.014160	None at this time.
VNB4F00016 /				\$20.11	
750,000 / 06/2012	0	0	0	\$0.00000	
Black Network Printer				\$0.00	
AXIS					
Room 116					
HP Laser Jet Pro M401dn / 35 PPM	51,767	58,074	6,307	\$0.014160	None at this time.
VNB3N04802 /				\$89.31	
750,000 / 06/2012	0	0	0	\$0.00000	
Black Network Printer				\$0.00	
AXIS					
Room 127D					
HP Laser Jet Pro M401dn / 35 PPM	12,993	16,684	3,691	\$0.014160	None at this time.
VNB3N04798 /				\$52.26	
750,000 / 06/2012	0	0	0	\$0.00000	
Black Network Printer				\$0.00	
AXIS					
Room 131-132 Life Skills					
HP Laser Jet 400 M401n / 35 PPM	37,720	40,040	2,320	\$0.014160	None at this time.
VNB3H07001 /				\$32.85	
750,000 / 01/2013	0	0	0	\$0.00000	
Black Network Printer				\$0.00	
AXIS					

Make-Model / Speed Serial Number / Vendor ID Life / Intro Date Vendor					Date of Last Upgrade: 9/15/2016	
	7/1/2017 Meter	6/30/2018 Meter	2017-18 Annual Volume	Cost/Copy Annual Cost	Recommendations	
WINDHAM HIGH						
Room 133E						
HP Color Laser Jet M452dn / 28 PPM VNB3M40734 / 500,000 / 10/2015 Color Network Printer AXIS	2,257 953	6,451 2,731	4,194 1,778	\$0.028750 \$120.58 \$0.14875 \$264.48	None at this time.	
Room 136						
HP Laser Jet Pro M401dne / 35 PPM PHGFD48672 / 750,000 / 01/2013 Black Network Printer AXIS	3,625 0	11,176 0	7,551 0	\$0.014160 \$106.92 \$0.00000 \$0.00	None at this time.	
Room 139						
HP Laser Jet Pro M401dn / 35 PPM VNB4M00097 / 750,000 / 06/2012 Black Network Printer AXIS	64,996 0	90,915 0	25,919 0	\$0.014160 \$367.01 \$0.00000 \$0.00	None at this time.	
Toshiba e-Studio 6508A / 65 PPM CIIF11876 / 6574 3,000,000 / 08/2016 Black Photocopier A-COPI	31,176 0	63,893 0	32,717 0	\$0.003700 \$121.05 \$0.00000 \$0.00	None at this time.	

<i>Make-Model / Speed Serial Number / Vendor ID Life / Intro Date</i>				<i>Date of Last Upgrade: 9/15/2016</i>	
<i>Vendor</i>	<i>7/1/2017 Meter</i>	<i>6/30/2018 Meter</i>	<i>2017-18 Annual Volume</i>	<i>Cost/Copy Annual Cost</i>	<i>Recommendations</i>
WINDHAM HIGH					
Room 1A School Counselor - Ginn					
HP Laser Jet Pro M401dn / 35 PPM	5,589	5,978	389	\$0.014160	Underused!
VNB4F00025 /				\$5.51	
750,000 / 06/2012	0	0	0	\$0.00000	
Black Network Printer				\$0.00	
AXIS					
Room 203J					
HP Color Laser Jet M452dn / 28 PPM	502	1,652	1,150	\$0.028750	None at this time.
VNB3M40718 /				\$33.06	
500,000 / 10/2015	638	2,236	1,598	\$0.14875	
Color Network Printer				\$237.70	
AXIS					
HP Laser Jet Pro M401dn / 35 PPM	30,101	37,930	7,829	\$0.014160	None at this time.
VNB3N04854 /				\$110.86	
750,000 / 06/2012	0	0	0	\$0.00000	
Black Network Printer				\$0.00	
AXIS					
Room 204J					
HP Laser Jet Pro M401dn / 35 PPM	66,588	67,718	1,130	\$0.014160	None at this time.
VNB4F00015 /				\$16.00	
750,000 / 06/2012	0	0	0	\$0.00000	
Black Network Printer				\$0.00	
AXIS					

<i>Make-Model / Speed Serial Number / Vendor ID Life / Intro Date</i>				<i>Date of Last Upgrade: 9/15/2016</i>	
<i>Vendor</i>	<i>7/1/2017 Meter</i>	<i>6/30/2018 Meter</i>	<i>2017-18 Annual Volume</i>	<i>Cost/Copy Annual Cost</i>	<i>Recommendations</i>
WINDHAM HIGH					
Room 212 Principal's Office					
HP Color Laser Jet M452dn / 28 PPM	342	1,098	756	\$0.028750	None at this time.
VNB3M37240 /				\$21.74	
500,000 / 10/2015	519	1,294	775	\$0.14875	
Color Network Printer				\$115.28	
AXIS					
Room 216					
HP Laser Jet Pro M401dn / 35 PPM	50,000	61,069	11,069	\$0.014160	None at this time.
VNB3N04851 /				\$156.74	
750,000 / 06/2012	0	0	0	\$0.00000	
Black Network Printer				\$0.00	
AXIS					
Room 228 RLP Office					
HP Laser Jet Pro M401dn / 35 PPM	48,442	57,058	8,616	\$0.014160	None at this time.
VNB4F00039 /				\$122.00	
750,000 / 06/2012	0	0	0	\$0.00000	
Black Network Printer				\$0.00	
AXIS					
Room 2A School Counselor - Burbank					
HP Laser Jet Pro M401dn / 35 PPM	9,469	10,362	893	\$0.014160	None at this time.
VNB4F00032 /				\$12.64	
750,000 / 06/2012	0	0	0	\$0.00000	
Black Network Printer				\$0.00	
AXIS					

<i>Make-Model / Speed Serial Number / Vendor ID Life / Intro Date</i>				<i>Date of Last Upgrade: 9/15/2016</i>	
<i>Vendor</i>	<i>7/1/2017 Meter</i>	<i>6/30/2018 Meter</i>	<i>2017-18 Annual Volume</i>	<i>Cost/Copy Annual Cost</i>	<i>Recommendations</i>
WINDHAM HIGH					
Room 302H					
HP Color Laser Jet M452dn / 28 PPM	457	1,708	1,251	\$0.028750	None at this time.
VNB3M37231 /				\$35.97	
500,000 / 10/2015	527	1,512	985	\$0.14875	
Color Network Printer				\$146.52	
AXIS					
Room 306 Music Room					
HP Laser Jet Pro M401dn / 35 PPM	26,057	29,284	3,227	\$0.014160	None at this time.
VNB4F00023 /				\$45.69	
750,000 / 06/2012	0	0	0	\$0.00000	
Black Network Printer				\$0.00	
AXIS					
Room 310 Piano Room					
HP Laser Jet Pro M401dn / 35 PPM	12,701	13,309	608	\$0.014160	None at this time.
VNB4M00098 /				\$8.61	
750,000 / 06/2012	0	0	0	\$0.00000	
Black Network Printer				\$0.00	
AXIS					
Room 313					
Toshiba e-Studio 3555c / 35 PPM	18,751	38,494	19,743	\$0.003500	None at this time.
C7CF59028 / 6463				\$69.10	
750,000 / 07/2013	1,553	2,817	1,264	\$0.04440	
Color Photocopier				\$56.12	
A-COPI					

Make-Model / Speed Serial Number / Vendor ID Life / Intro Date Vendor					Date of Last Upgrade: 9/15/2016	
	7/1/2017 Meter	6/30/2018 Meter	2017-18 Annual Volume	Cost/Copy Annual Cost	Recommendations	
WINDHAM HIGH						
Room 313 Classroom						
Toshiba e-Studio 456 / 45 PPM C2D235883 / 3088 1,000,000 / 02/2012 Black Photocopier A-COPI	284,823 0	318,164 0	33,341 0	\$0.003700 \$123.36 \$0.00000 \$0.00	None at this time.	
Room 313 Industrial Arts						
HP Color Laser Jet M452dn / 28 PPM VNB3M37234 / 500,000 / 10/2015 Color Network Printer AXIS	187 1,032	584 1,814	397 782	\$0.028750 \$11.41 \$0.14875 \$116.32	None at this time.	
Room 326 Health Lab Conf Rm						
HP Laser Jet Pro M401dn / 35 PPM VNB4F00030 / 750,000 / 06/2012 Black Network Printer AXIS	13,374 0	16,716 0	3,342 0	\$0.014160 \$47.32 \$0.00000 \$0.00	None at this time.	
Room 3A School Counselor - Clark						
HP Laser Jet Pro M401dn / 35 PPM VNB4F00040 / 750,000 / 06/2012 Black Network Printer AXIS	9,903 0	10,950 0	1,047 0	\$0.014160 \$14.83 \$0.00000 \$0.00	None at this time.	

<i>Make-Model / Speed</i>	<i>Date of Last Upgrade: 9/15/2016</i>				
<i>Serial Number / Vendor ID</i>					
<i>Life / Intro Date</i>					
<i>Vendor</i>	<i>7/1/2017 Meter</i>	<i>6/30/2018 Meter</i>	<i>2017-18 Annual Volume</i>	<i>Cost/Copy Annual Cost</i>	<i>Recommendations</i>
WINDHAM HIGH					
Room 4A School Counselor - Fleming					
HP Laser Jet Pro M401dn / 35 PPM	6,238	8,156	1,918	\$0.014160	None at this time.
VNB4F00027 /				\$27.16	
750,000 / 06/2012	0	0	0	\$0.00000	
Black Network Printer				\$0.00	
AXIS					
Room A Social Worker - Dangle					
HP Laser Jet Pro M401dn / 35 PPM	3,563	3,983	420	\$0.014160	Underused!
VNB3N04794 /				\$5.95	
750,000 / 06/2012	0	0	0	\$0.00000	
Black Network Printer				\$0.00	
AXIS					
Seth Fournier					
HP Laser Jet Pro M401dn / 35 PPM	78,784	79,619	835	\$0.014160	None at this time.
VNB3N04853 /				\$11.82	
750,000 / 06/2012	0	0	0	\$0.00000	
Black Network Printer				\$0.00	
AXIS					
Social Worker - Elizabeth King					
HP Color Laser Jet M452dn / 28 PPM	1,245	2,377	1,132	\$0.028750	None at this time.
VNB3M40724 /				\$32.55	
500,000 / 10/2015	1,047	2,535	1,488	\$0.14875	
Color Network Printer				\$221.34	
AXIS					

<i>Make-Model / Speed Serial Number / Vendor ID Life / Intro Date</i>				<i>Date of Last Upgrade: 9/15/2016</i>	
<i>Vendor</i>	<i>7/1/2017 Meter</i>	<i>6/30/2018 Meter</i>	<i>2017-18 Annual Volume</i>	<i>Cost/Copy Annual Cost</i>	<i>Recommendations</i>
WINDHAM HIGH					
<i>Student Hallway Printer - Math Dept M</i>					
HP Laser Jet Pro M401dn / 35 PPM	45,977	61,313	15,336	\$0.014160	None at this time.
VNB3N04852 /				\$217.16	
750,000 / 06/2012	0	0	0	\$0.00000	
Black Network Printer				\$0.00	
AXIS					
<i>Student Printer Faculty Office B</i>					
HP Laser Jet Pro M402dn / 40 PPM	12,296	35,678	23,382	\$0.028750	None at this time.
JPBDY10481 /				\$672.23	
1,000,000 / 10/2015	0	0	0	\$0.00000	
Black Network Printer				\$0.00	
AXIS					
<i>Student Printer Map Hallway</i>					
HP Laser Jet Pro M402dn / 40 PPM	11,268	44,012	32,744	\$0.028750	None at this time.
JPBDY10470 /				\$941.39	
1,000,000 / 10/2015	0	0	0	\$0.00000	
Black Network Printer				\$0.00	
AXIS					
<i>Student Services - Guidance Lounge</i>					
Toshiba e-Studio 3555c / 35 PPM	15,038	40,097	25,059	\$0.003500	None at this time.
C7CF58699 / 6468				\$87.71	
750,000 / 07/2013	16,489	55,010	38,521	\$0.04440	
Color Photocopier				\$1,710.33	
A-COPI					

<i>Make-Model / Speed Serial Number / Vendor ID Life / Intro Date</i>				<i>Date of Last Upgrade: 9/15/2016</i>	
<i>Vendor</i>	<i>7/1/2017 Meter</i>	<i>6/30/2018 Meter</i>	<i>2017-18 Annual Volume</i>	<i>Cost/Copy Annual Cost</i>	<i>Recommendations</i>
WINDHAM HIGH					
<i>Student Services #1 near Sue Marston</i>					
HP Laser Jet Pro M401dn / 35 PPM	48,309	57,346	9,037	\$0.014160	None at this time.
VNB4F00013 /				\$127.96	
750,000 / 06/2012	0	0	0	\$0.00000	
Black Network Printer				\$0.00	
AXIS					
<i>Student Services #2</i>					
HP Laser Jet Pro M401dn / 35 PPM	17,158	21,836	4,678	\$0.014160	None at this time.
VNB4F00031 /				\$66.24	
750,000 / 06/2012	0	0	0	\$0.00000	
Black Network Printer				\$0.00	
AXIS					
<i>Student Services across from Sue</i>					
HP Color Laser Jet M452dn / 28 PPM	638	913	275	\$0.028750	None at this time.
VNB3M37236 /				\$7.91	
500,000 / 10/2015	1,888	2,416	528	\$0.14875	
Color Network Printer				\$78.54	
AXIS					
<i>Students' 300 Wing Hallway Cart</i>					
HP Laser Jet Pro M402dn / 40 PPM	8,792	19,699	10,907	\$0.028750	None at this time.
JPBDY10468 /				\$313.58	
1,000,000 / 10/2015	0	0	0	\$0.00000	
Black Network Printer				\$0.00	
AXIS					

Make-Model / Speed Serial Number / Vendor ID Life / Intro Date Vendor					Date of Last Upgrade: 9/15/2016	
	7/1/2017 Meter	6/30/2018 Meter	2017-18 Annual Volume	Cost/Copy Annual Cost	Recommendations	
WINDHAM HIGH						
Students outside K Faculty Offices						
HP Laser Jet Pro M402dn / 40 PPM JPBDY10478 / 1,000,000 / 10/2015 Black Network Printer AXIS	13,238 0	34,536 0	21,298 0	\$0.028750 \$612.32 \$0.00000 \$0.00	None at this time.	
Teachers' Cafeteria						
Toshiba e-Studio 456 / 45 PPM C2D236072 / 3102 1,000,000 / 02/2012 Black Photocopier A-COPI	365,606 0	376,391 0	10,785 0	\$0.003700 \$39.90 \$0.00000 \$0.00	None at this time.	
Tech Office: Aaron						
HP Laser Jet Pro M401dn / 35 PPM VNB3N04861 / 750,000 / 06/2012 Black Network Printer AXIS	9,306 0	9,426 0	120 0	\$0.014160 \$1.70 \$0.00000 \$0.00	Underused!	
Tech Room						
HP Color Laser Jet M452dn / 28 PPM VNB3M37230 / 500,000 / 10/2015 Color Network Printer AXIS	856 2,093	2,342 2,912	1,486 819	\$0.028750 \$42.72 \$0.14875 \$121.83	None at this time.	

<i>Make-Model / Speed</i>				<i>Date of Last Upgrade: 9/15/2016</i>	
<i>Serial Number / Vendor ID</i>					
<i>Life / Intro Date</i>					
<i>Vendor</i>	<i>7/1/2017 Meter</i>	<i>6/30/2018 Meter</i>	<i>2017-18 Annual Volume</i>	<i>Cost/Copy Annual Cost</i>	<i>Recommendations</i>
WINDHAM HIGH					
			Subtotals Black	1,843,292	\$12,431.03
			Subtotals Color	193,323	\$10,022.84

<i>Make-Model / Speed</i>	<i>Date of Last Upgrade: 9/15/2016</i>				
<i>Serial Number / Vendor ID</i>					
<i>Life / Intro Date</i>					
<i>Vendor</i>	<i>7/1/2017 Meter</i>	<i>6/30/2018 Meter</i>	<i>2017-18 Annual Volume</i>	<i>Cost/Copy Annual Cost</i>	<i>Recommendations</i>
WINDHAM MIDDLE					
<i>A/V Storage Room</i>					
HP Laser Jet Pro M401dn / 35 PPM	22,561	36,107	13,546	\$0.014160	None at this time.
VNB4M00095 /				\$191.81	
750,000 / 06/2012	0	0	0	\$0.00000	
Black Network Printer				\$0.00	
AXIS					
<i>Assistant Principal</i>					
HP Laser Jet Pro M401dn / 35 PPM	24,897	25,246	349	\$0.014160	Underused!
VNB3N13288 /				\$4.94	
750,000 / 06/2012	0	0	0	\$0.00000	
Black Network Printer				\$0.00	
AXIS					
<i>Guidance Office</i>					
HP Laser Jet Pro M401dn / 35 PPM	34,520	48,945	14,425	\$0.014160	None at this time.
VNB4M00100 /				\$204.26	
750,000 / 06/2012	0	0	0	\$0.00000	
Black Network Printer				\$0.00	
AXIS					
<i>Guidance Office Conference Room</i>					
Toshiba e-Studio 6508A / 65 PPM	46,339	134,340	88,001	\$0.003500	None at this time.
CIIF11900 / 6571				\$308.00	
3,000,000 / 08/2016	0	0	0	\$0.00000	
Black Photocopier				\$0.00	
A-COPI					

<i>Make-Model / Speed Serial Number / Vendor ID Life / Intro Date</i>				<i>Date of Last Upgrade: 9/15/2016</i>	
<i>Vendor</i>	<i>7/1/2017 Meter</i>	<i>6/30/2018 Meter</i>	<i>2017-18 Annual Volume</i>	<i>Cost/Copy Annual Cost</i>	<i>Recommendations</i>
WINDHAM MIDDLE					
<i>Industrial Arts Office</i>					
HP Laser Jet Pro M401dn / 35 PPM	42,114	52,591	10,477	\$0.014160	None at this time.
VNB4M00085 /				\$148.35	
750,000 / 06/2012	0	0	0	\$0.00000	
Black Network Printer				\$0.00	
AXIS					
<i>Kitchen Office</i>					
HP Laser Jet Pro M401dn / 35 PPM	11,874	15,322	3,448	\$0.014160	None at this time.
VNB4F00024 /				\$48.82	
750,000 / 06/2012	0	0	0	\$0.00000	
Black Network Printer				\$0.00	
AXIS					
<i>Library Front Desk</i>					
HP Color Laser Jet M452dn / 28 PPM	4,696	11,260	6,564	\$0.028750	None at this time.
VNB3B32482 /				\$188.72	
500,000 / 10/2015	7,057	16,857	9,800	\$0.14875	
Color Network Printer				\$1,457.75	
AXIS					

Make-Model / Speed Serial Number / Vendor ID Life / Intro Date					Date of Last Upgrade: 9/15/2016	
Vendor	7/1/2017 Meter	6/30/2018 Meter	2017-18 Annual Volume	Cost/Copy Annual Cost	Recommendations	
WINDHAM MIDDLE						
Main Office						
HP Color Laser Jet M452dn / 28 PPM VNB3M94312 / 500,000 / 10/2015 Color Network Printer AXIS	0 0	173 675	173 675	\$0.028750 \$4.97 \$0.14875 \$100.41	None at this time.	
Toshiba e-Studio 3555c / 35 PPM C7CF58855 / 6470 750,000 / 07/2013 Color Photocopier A-COPI	10,223 10,313	46,612 23,687	36,389 13,374	\$0.003500 \$127.36 \$0.04440 \$593.81	None at this time.	
Toshiba e-Studio 7508A / 75 PPM CIHF11139 / 6573 4,000,000 / 07/2016 Black Photocopier A-COPI	102,026 0	327,855 0	225,829 0	\$0.003500 \$790.40 \$0.00000 \$0.00	None at this time.	
Main Office - Andrea Morrell						
HP Laser Jet Pro M401dn / 35 PPM VNB3N04789 / 750,000 / 06/2012 Black Network Printer AXIS	23,753 0	30,149 0	6,396 0	\$0.014160 \$90.57 \$0.00000 \$0.00	None at this time.	

Date of Last Upgrade: 9/15/2016					
Make-Model / Speed Serial Number / Vendor ID Life / Intro Date Vendor	7/1/2017 Meter	6/30/2018 Meter	2017-18 Annual Volume	Cost/Copy Annual Cost	Recommendations
WINDHAM MIDDLE					
Main Office (MVD TO STORAGE)					
Kyocera FS-C5350DN / 32 PPM QVQ1Z05199 / 3069 750,000 / 08/2009 Color Network Printer A-COPI	7,157	8,477	1,320	\$0.009860 \$13.02	9 years from Intro.
	5,065	11,835	6,770	\$0.07009	
				\$474.51	
Middle School Nurse					
HP Laser Jet Pro M401dn / 35 PPM VNB4M00092 / 750,000 / 06/2012 Black Network Printer AXIS	42,863	44,662	1,799	\$0.014160 \$25.47	None at this time.
	0	0	0	\$0.00000	
				\$0.00	
Music Office #3 - Julie Packard					
HP Color Laser Jet M451dn / 21 PPM CNDG324730 / 500,000 / 02/2012 Color Network Printer AXIS	4,142	5,798	1,656	\$0.032060 \$53.09	None at this time.
	8,171	11,828	3,657	\$0.24989	
				\$913.85	
Music Teacher's Office					
HP Color Laser Jet M452dn / 28 PPM VNB3B32464 / 500,000 / 10/2015 Color Network Printer AXIS	1,056	2,278	1,222	\$0.028750 \$35.13	None at this time.
	886	1,820	934	\$0.14875	
				\$138.93	

<i>Make-Model / Speed Serial Number / Vendor ID Life / Intro Date</i>				<i>Date of Last Upgrade: 9/15/2016</i>	
<i>Vendor</i>	<i>7/1/2017 Meter</i>	<i>6/30/2018 Meter</i>	<i>2017-18 Annual Volume</i>	<i>Cost/Copy Annual Cost</i>	<i>Recommendations</i>
WINDHAM MIDDLE					
Principal's Office					
HP Laser Jet Pro M401dn / 35 PPM VNB4M00077 / 750,000 / 06/2012 Black Network Printer AXIS	6,539 0	10,741 0	4,202 0	\$0.014160 \$59.50 \$0.00000 \$0.00	None at this time.
Room 101					
HP Laser Jet Pro M401dn / 35 PPM VNB3N04801 / 750,000 / 06/2012 Black Network Printer AXIS	15,294 0	19,309 0	4,015 0	\$0.014160 \$56.85 \$0.00000 \$0.00	None at this time.
Room 102					
HP Laser Jet Pro M401dn / 35 PPM VNB3N04791 / 750,000 / 06/2012 Black Network Printer AXIS	32,188 0	35,308 0	3,120 0	\$0.014160 \$44.18 \$0.00000 \$0.00	None at this time.
Room 103A					
Toshiba e-Studio 7508A / 75 PPM CIHF11657 / 6572 4,000,000 / 07/2016 Black Photocopier A-COPI	116,744 0	301,926 0	185,182 0	\$0.003500 \$648.14 \$0.00000 \$0.00	None at this time.

<i>Make-Model / Speed Serial Number / Vendor ID Life / Intro Date</i>				<i>Date of Last Upgrade: 9/15/2016</i>	
<i>Vendor</i>	<i>7/1/2017 Meter</i>	<i>6/30/2018 Meter</i>	<i>2017-18 Annual Volume</i>	<i>Cost/Copy Annual Cost</i>	<i>Recommendations</i>
WINDHAM MIDDLE					
Room 107					
HP Laser Jet Pro M401dne / 35 PPM PHGFD36835 / 750,000 / 01/2013	26,328 0	33,736 0	7,408 0	\$0.014160 \$104.90 \$0.00000	None at this time.
Black Network Printer AXIS				\$0.00	
Room 109					
HP Laser Jet Pro M401dn / 35 PPM VNB3N04805 / 750,000 / 06/2012	36,574 0	45,697 0	9,123 0	\$0.014160 \$129.18 \$0.00000	None at this time.
Black Network Printer AXIS				\$0.00	
Room 111					
HP Laser Jet Pro M401dn / 35 PPM VNB4M00093 / 750,000 / 06/2012	14,232 0	20,312 0	6,080 0	\$0.014160 \$86.09 \$0.00000	None at this time.
Black Network Printer AXIS				\$0.00	
Room 112					
HP Laser Jet Pro M401dn / 35 PPM VNB3N04649 / 750,000 / 06/2012	14,086 0	18,563 0	4,477 0	\$0.014160 \$63.39 \$0.00000	None at this time.
Black Network Printer AXIS				\$0.00	

<i>Make-Model / Speed Serial Number / Vendor ID Life / Intro Date</i>				<i>Date of Last Upgrade: 9/15/2016</i>	
<i>Vendor</i>	<i>7/1/2017 Meter</i>	<i>6/30/2018 Meter</i>	<i>2017-18 Annual Volume</i>	<i>Cost/Copy Annual Cost</i>	<i>Recommendations</i>
WINDHAM MIDDLE					
Room 201					
HP Laser Jet Pro M401dn / 35 PPM	18,916	20,825	1,909	\$0.014160	None at this time.
VNB4M00094 /				\$27.03	
750,000 / 06/2012	0	0	0	\$0.00000	
Black Network Printer				\$0.00	
AXIS					
Room 201 Supply Closet					
HP Laser Jet Pro M401dn / 35 PPM	41,582	56,756	15,174	\$0.014160	None at this time.
VNB3N04799 /				\$214.86	
750,000 / 06/2012	0	0	0	\$0.00000	
Black Network Printer				\$0.00	
AXIS					
Room 201A Supply Closet					
Toshiba e-Studio 756 / 75 PPM	633,981	734,582	100,601	\$0.003700	None at this time.
CKE210744 / 3106				\$372.22	
4,000,000 / 02/2012	0	0	0	\$0.00000	
Black Photocopier				\$0.00	
A-COPI					
Room 204					
HP Laser Jet Pro M401dn / 35 PPM	31,504	35,478	3,974	\$0.014160	None at this time.
VNB3N04800 /				\$56.27	
750,000 / 06/2012	0	0	0	\$0.00000	
Black Network Printer				\$0.00	
AXIS					

Make-Model / Speed Serial Number / Vendor ID Life / Intro Date Vendor					Date of Last Upgrade: 9/15/2016	
	7/1/2017 Meter	6/30/2018 Meter	2017-18 Annual Volume	Cost/Copy Annual Cost	Recommendations	
WINDHAM MIDDLE						
Room 210						
HP Laser Jet Pro M401dn / 35 PPM	28,094	37,035	8,941	\$0.014160	None at this time.	
VNB4M00091 /				\$126.60		
750,000 / 06/2012	0	0	0	\$0.00000		
Black Network Printer				\$0.00		
AXIS						
Room 212						
HP Laser Jet Pro M401dn / 35 PPM	34,090	37,710	3,620	\$0.014160	None at this time.	
VNB4M00096 /				\$51.26		
750,000 / 06/2012	0	0	0	\$0.00000		
Black Network Printer				\$0.00		
AXIS						
Room 213						
HP Laser Jet Pro M401dn / 35 PPM	149,766	163,509	13,743	\$0.014160	None at this time.	
VNB3N04658 /				\$194.60		
750,000 / 06/2012	0	0	0	\$0.00000		
Black Network Printer				\$0.00		
AXIS						
HP Laser Jet Pro M401dn / 35 PPM	47,224	49,313	2,089	\$0.014160	Traded0	
VNB3N04796 /				\$29.58		
750,000 / 06/2012	0	0	0	\$0.00000		
Black Network Printer				\$0.00		
AXIS						

<i>Make-Model / Speed Serial Number / Vendor ID Life / Intro Date</i>				<i>Date of Last Upgrade: 9/15/2016</i>	
<i>Vendor</i>	<i>7/1/2017 Meter</i>	<i>6/30/2018 Meter</i>	<i>2017-18 Annual Volume</i>	<i>Cost/Copy Annual Cost</i>	<i>Recommendations</i>
WINDHAM MIDDLE					
Room 214					
HP Laser Jet Pro M401dn / 35 PPM	16,779	19,246	2,467	\$0.014160	None at this time.
VNB3N04783 /				\$34.93	
750,000 / 06/2012	0	0	0	\$0.00000	
Black Network Printer				\$0.00	
AXIS					
Room 304A					
HP Laser Jet Pro M401dn / 35 PPM	19,815	24,640	4,825	\$0.014160	None at this time.
VNB3N04804 /				\$68.32	
750,000 / 06/2012	0	0	0	\$0.00000	
Black Network Printer				\$0.00	
AXIS					
Special Education Room 104 - Bob					
HP Laser Jet Pro M402dn / 40 PPM	4,093	5,237	1,144	\$0.028750	None at this time.
JPBDY16986 /				\$32.89	
1,000,000 / 10/2015	0	0	0	\$0.00000	
Black Network Printer				\$0.00	
AXIS					
Subtotals Black			793,688	\$4,635.74	
Subtotals Color			35,210	\$3,679.25	

Make-Model / Speed Serial Number / Vendor ID Life / Intro Date					Date of Last Upgrade: 9/15/2016	
Vendor	7/1/2017 Meter	6/30/2018 Meter	2017-18 Annual Volume	Cost/Copy Annual Cost	Recommendations	
WINDHAM PRIMARY						
A House 2nd Floor Work Room						
HP Laser Jet Pro M402dn / 40 PPM JPBDY16988 / 1,000,000 / 10/2015 Black Network Printer AXIS	26,675 0	56,081 0	29,406 0	\$0.028750 \$845.42 \$0.00000 \$0.00	None at this time.	
Toshiba e-Studio 8508A / 85 PPM CIIF11798 / 6579 5,000,000 / 07/2016 Black Photocopier A-COPI	211,969 0	442,401 0	230,432 0	\$0.003500 \$806.51 \$0.00000 \$0.00	None at this time.	
B House 2nd Floor Work Room						
HP Laser Jet Pro M402dn / 40 PPM JPBDY10473 / 1,000,000 / 10/2015 Black Network Printer AXIS	16,013 0	37,270 0	21,257 0	\$0.028750 \$611.14 \$0.00000 \$0.00	None at this time.	
Toshiba e-Studio 8508A / 85 PPM CIIF12141 / 6585 5,000,000 / 07/2016 Black Photocopier A-COPI	126,386 0	272,134 0	145,748 0	\$0.003500 \$510.12 \$0.00000 \$0.00	None at this time.	

Make-Model / Speed Serial Number / Vendor ID Life / Intro Date					Date of Last Upgrade: 9/15/2016	
Vendor	7/1/2017 Meter	6/30/2018 Meter	2017-18 Annual Volume	Cost/Copy Annual Cost	Recommendations	
WINDHAM PRIMARY						
C House 1st Floor Work Room						
HP Laser Jet Pro M402dn / 40 PPM JPBDY10486 / 1,000,000 / 10/2015 Black Network Printer AXIS	14,267 0	31,253 0	16,986 0	\$0.028750 \$488.35 \$0.00000 \$0.00	None at this time.	
Toshiba e-Studio 8508A / 85 PPM CIIF12142 / 6584 5,000,000 / 07/2016 Black Photocopier A-COPI	160,776 0	401,420 0	240,644 0	\$0.003500 \$842.25 \$0.00000 \$0.00	None at this time.	
C House 2nd Floor Work Room						
HP Laser Jet Pro M402dn / 40 PPM JPBDY10464 / 1,000,000 / 10/2015 Black Network Printer AXIS	22,372 0	45,609 0	23,237 0	\$0.028750 \$668.06 \$0.00000 \$0.00	None at this time.	
Toshiba e-Studio 8508A / 85 PPM CIIF11815 / 6583 5,000,000 / 07/2016 Black Photocopier A-COPI	158,217 0	344,583 0	186,366 0	\$0.003500 \$652.28 \$0.00000 \$0.00	None at this time.	

<i>Make-Model / Speed Serial Number / Vendor ID Life / Intro Date</i>				<i>Date of Last Upgrade: 9/15/2016</i>	
<i>Vendor</i>	<i>7/1/2017 Meter</i>	<i>6/30/2018 Meter</i>	<i>2017-18 Annual Volume</i>	<i>Cost/Copy Annual Cost</i>	<i>Recommendations</i>
WINDHAM PRIMARY					
Computer Lab 1					
HP Laser Jet Pro M401dn / 35 PPM	40,557	48,110	7,553	\$0.014160	None at this time.
VNB3N04653 /				\$106.95	
750,000 / 06/2012	0	0	0	\$0.00000	
Black Network Printer				\$0.00	
AXIS					
IT Room					
HP Laser Jet Pro M401dn / 35 PPM	6,404	6,851	447	\$0.014160	Underused!
VNB3N04661 /				\$6.33	
750,000 / 06/2012	0	0	0	\$0.00000	
Black Network Printer				\$0.00	
AXIS					
Kitchen Office					
HP Laser Jet Pro M401dn / 35 PPM	7,540	9,488	1,948	\$0.014160	None at this time.
VNB3N04665 /				\$27.58	
750,000 / 06/2012	0	0	0	\$0.00000	
Black Network Printer				\$0.00	
AXIS					
Library					
HP Laser Jet Pro M401dn / 35 PPM	20,884	31,877	10,993	\$0.014160	None at this time.
VNB3N04651 /				\$155.66	
750,000 / 06/2012	0	0	0	\$0.00000	
Black Network Printer				\$0.00	
AXIS					

<i>Make-Model / Speed Serial Number / Vendor ID Life / Intro Date</i>					<i>Date of Last Upgrade: 9/15/2016</i>
<i>Vendor</i>	<i>7/1/2017 Meter</i>	<i>6/30/2018 Meter</i>	<i>2017-18 Annual Volume</i>	<i>Cost/Copy Annual Cost</i>	<i>Recommendations</i>
WINDHAM PRIMARY					
Main Office					
Toshiba e-Studio 456 / 45 PPM C2D235903 / 3090 1,000,000 / 02/2012 Black Photocopier A-COPI	428,095 0	508,125 0	80,030 0	\$0.003500 \$280.11 \$0.00000 \$0.00	None at this time.
Martha's Office					
Toshiba e-Studio 4505AC / 45 PPM CFHF50573 / 6598 1,000,000 / 07/2016 Color Photocopier A-COPI	28,981 7,962	69,976 21,123	40,995 13,161	\$0.003500 \$143.48 \$0.04440 \$584.35	None at this time.
Room B101					
Kyocera FS-C5350DN / 32 PPM QVQ1Z05202 / 3063 750,000 / 08/2009 Color Network Printer A-COPI	27,558 8,659	28,108 9,403	550 744	\$0.009860 \$5.42 \$0.07009 \$52.15	9 years from Intro.
Special Education Office					
HP Laser Jet Pro M401dn / 35 PPM VNB3N04657 / 750,000 / 06/2012 Black Network Printer AXIS	110,453 0	128,564 0	18,111 0	\$0.014160 \$256.45 \$0.00000 \$0.00	None at this time.

Make-Model / Speed Serial Number / Vendor ID Life / Intro Date Vendor					Date of Last Upgrade: 9/15/2016	
	7/1/2017 Meter	6/30/2018 Meter	2017-18 Annual Volume	Cost/Copy Annual Cost	Recommendations	
WINDHAM PRIMARY						
Teachers' Room						
HP Laser Jet Pro M402dn / 40 PPM JPBDY16954 / 1,000,000 / 10/2015 Black Network Printer AXIS	665 0	3,183 0	2,518 0	\$0.028750 \$72.39 \$0.00000 \$0.00	None at this time.	
Toshiba e-Studio 4505AC / 45 PPM CHHF11108 / 6589 1,000,000 / 07/2016 Color Photocopier A-COPI	204,959 110,519	510,557 261,845	305,598 151,326	\$0.003500 \$1,069.59 \$0.04440 \$6,718.87	None at this time.	
Toshiba e-Studio 8508A / 85 PPM CIIF11831 / 6577 5,000,000 / 07/2016 Black Photocopier A-COPI	152,797 0	367,366 0	214,569 0	\$0.003500 \$750.99 \$0.00000 \$0.00	None at this time.	
Subtotals Black			1,577,388	\$8,299.10		
Subtotals Color			165,231	\$7,355.37		

<i>District Wide Black Totals</i>	6,497,262	\$37,654.04
<i>District Wide Color Totals</i>	724,934	\$40,145.97

SPC Service & Supply Cost Savings

These tables compare your equipment cost per copy for service and supplies (black prints or copies only) before becoming an **SPC client on 8/10/2001** with your projected cost per copy for the new fiscal year through SPC. Annual Volume represents actual 2017-18 fiscal year black print usage. The second table represents your annual and five-year cost savings compared to your previous cost per copy rate.

BEFORE SPC

Current Volume	PriorCPC	Average Annual Cost
6,497,262	\$0.01400	\$90,961.67

CURRENTLY WITH SPC

Current Volume	Current CPC*	Current Cost	Cost Savings	5 Year Savings
6,497,262	\$0.00580	\$37,684.12	\$53,277.55	\$266,387.74

Today the Cooperative Buying of SPC has netted annual cost savings, on average, of \$53,277.55 x 17 years as a Client

= \$905,718.32 Cost Savings!

*This CPC is an average of your copiers and printers together. Your copier cpc is substantially lower than this average.

Projected Equipment Costs by Building - Black

This table represents projected expenses for BLACK prints or copies by building based on recent activity. Approximate current paper case costs and averaged current annual lease payment are figured in to provide budget information for the upcoming fiscal year.

Building	Projected Black Volume	Projected Black Usage Cost	Approx.Paper Cost	Average Annual Equipment Cost	Total Projected Black Usage Cost
Field Allen School	275,627	\$1,548.98	\$1,367.66	\$3,297.72	\$6,214.36
Jordan-Small Middle	277,722	\$1,230.45	\$1,378.06	\$3,322.78	\$5,931.29
Katahdin Program	13,530	\$55.61	\$67.14	\$161.88	\$284.62
Manchester School	953,232	\$5,227.51	\$4,729.94	\$11,404.87	\$21,362.32
Raymond Elementary	500,924	\$2,167.45	\$2,485.58	\$5,993.27	\$10,646.30
RSU 14 District Bldg	247,891	\$2,344.42	\$1,230.04	\$2,965.87	\$6,540.33
RSU 14 School Transportation	13,968	\$61.20	\$69.31	\$167.12	\$297.63
Windham High	1,843,292	\$12,782.34	\$9,146.41	\$22,053.93	\$43,982.69
Windham Middle	793,688	\$4,766.82	\$3,938.28	\$9,496.02	\$18,201.12
Windham Primary	1,577,388	\$8,534.97	\$7,827.00	\$18,872.54	\$35,234.51
Total	6,497,262	\$38,719.75	\$32,239.41	\$77,736.00	\$148,695.16

SPC Equipment Bids:

*Presently our bids are coming in between **14.77% to 20.87%** of Retail while the current Salesman's Cost is 50% of Retail. For Example: An Konica Minolta BH 958 RADF Duplex Finisher 3-Hole Punch CIF-Print-Color Scan-Hard Drive for Secure Print 95 Copies per Minute with a Retail Cost of \$45,640 is coming in at **\$7,342....16% of Retail!** Our prices are negotiated and supported directly by the manufacturer.*

Projected Equipment Costs by Building - Color

This table represents projected expenses for COLOR prints or copies by building based on recent activity. Current paper case costs and current annual lease payment are NOT figured in to this table, as they are covered in the Black prints report.

Building	Projected Color Volume	Service & Supply Cost
Field Allen School	16,249	\$741.60
Jordan-Small Middle	47,316	\$2,159.50
Katahdin Program	14,223	\$730.35
Manchester School	77,867	\$5,378.32
Raymond Elementary	122,043	\$5,570.04
RSU 14 District Bldg	52,457	\$4,969.29
RSU 14 School Transportation	1,015	\$73.35
Windham High	193,323	\$10,302.97
Windham Middle	35,210	\$3,782.28
Windham Primary	165,231	\$7,560.79
Total	724,934	\$41,268.50

Service & Supply Usage Profile by Vendor - Black

This table represents actual expenses for BLACK prints or copies by vendor for the current year along with projected service & supply expenses for the upcoming fiscal year. Under SPC's new Simplified Billing Program, SPC will invoice you directly for 50% of the Projected Annual Volume in July and January, and then reconcile based on actual usage in June. Cost per copy typically increases by 5% or CPI annually, whichever is less. **Current year's increase is 2.8%.**

Vendor	Equipment Type	Annual Volume	2017- 2018 Cost / Copy	Total Cost	2018- 2019 Cost / Copy	Projected Cost
A-COPI	Black Photocopier	4,282,747	\$0.00350	\$14,989.61	\$0.00360	\$15,417.89
A-COPI	Black Photocopier	566,925	\$0.00370	\$2,097.62	\$0.00380	\$2,154.32
A-COPI	Color Network Printer	1,870	\$0.00986	\$18.44	\$0.01014	\$18.96
A-COPI	Color Photocopier	754,895	\$0.00350	\$2,642.13	\$0.00360	\$2,717.62
A-COPI	Color Photocopier	52,974	\$0.00400	\$211.90	\$0.00411	\$217.72
Axis Business Solutions	Black Network Printer	436,091	\$0.01416	\$6,175.05	\$0.01456	\$6,349.48
Axis Business Solutions	Black Network Printer	9,637	\$0.01738	\$167.49	\$0.01787	\$172.21
Axis Business Solutions	Black Network Printer	319,835	\$0.02875	\$9,195.26	\$0.02956	\$9,454.32
Axis Business Solutions	Color Network Printer	52,663	\$0.02875	\$1,514.06	\$0.02956	\$1,556.72
Axis Business Solutions	Color Network Printer	1,656	\$0.03206	\$53.09	\$0.03296	\$54.58
SPC Supported	Black Laser MFP	17,969	\$0.03280	\$589.38	\$0.03372	\$605.91
Total		6,497,262	\$0.00580	\$37,654.04	\$0.00596	\$38,719.75

Service & Supply Usage Profile by Vendor - Color

This table represents actual and projected expenses for COLOR prints or copies by vendor for the current and next fiscal year. Under SPC's new Simplified Billing Program, SPC will invoice you directly for 50% of the Projected Annual Volume in July and January, and then reconcile based on actual usage in June. Cost per copy typically increases by 5% or CPI annually, whichever is less. **Current year's increase is 2.8%.**

Vendor	Equipment Type	Annual Volume	2017- 2018 Cost / Copy	Total Cost	2018- 2019 Cost / Copy	Projected Cost
A-COPI	Color Network Printer	7,514	\$0.07009	\$526.66	\$0.07205	\$541.38
A-COPI	Color Photocopier	604,231	\$0.04440	\$26,827.86	\$0.04564	\$27,577.10
A-COPI	Color Photocopier	44,689	\$0.04995	\$2,232.22	\$0.05135	\$2,294.78
Axis Business Solutions	Color Network Printer	64,843	\$0.14875	\$9,645.40	\$0.15292	\$9,915.79
Axis Business Solutions	Color Network Printer	3,657	\$0.24989	\$913.85	\$0.25689	\$939.45
Total		724,934	\$0.05538	\$40,145.97	\$0.05693	\$41,268.50

Reprographic Equipment Assessment

This chart provides the status of your equipment and details of your current lease, if any. *

Total Number of Units	204
Total Number of Units on Lease	80
Total Number of Units Owned	124
Lease Company	Androscoggin Savings Bank
Lease Start Date	9/15/2016
Lease End Date	7/1/2021
Term	5 Annual
Annual Payment usually due on 8/1	\$77,736.00
Remaining Payments	3

**The determination on the lease has no bearing on Service & Supply and Warranty Contracts.*

Leased Equipment

Building	Make/Model	Serial Number
Field Allen School	Toshiba e-Studio 3555c	C7CF59054
Field Allen School	HP Laser Jet Pro M402dn	JPBDY16965
Field Allen School	Toshiba e-Studio 7508A	CIHF11140
Jordan-Small Middle	Toshiba e-Studio 7508A	CIHF11097
Jordan-Small Middle	Toshiba e-Studio 6506AC	CHHF11124
Manchester School	HP Laser Jet Pro M402dn	JPBDY16959
Manchester School	HP Color Laser Jet M452dn	VNB3B32479
Manchester School	HP Laser Jet Pro M402dn	JPBDY16950
Manchester School	HP Laser Jet Pro M402dn	JPBDY16957
Manchester School	HP Color Laser Jet M452dn	VNB3B32475
Manchester School	Toshiba e-Studio 5506AC	CHHF11007
Manchester School	Toshiba e-Studio 8508A	CIHF11765
Manchester School	Toshiba e-Studio 8508A	CIIF12145
Manchester School	HP Color Laser Jet M452dn	VNB3B32476
Manchester School	Toshiba e-Studio 8508A	CIHF11740
Raymond Elementary	Toshiba e-Studio 5506AC	CHIF11286
Raymond Elementary	Toshiba e-Studio 7508A	CIHF11037
Raymond Elementary	HP Laser Jet Pro M402dn	JPBDY16947
Raymond Elementary	Toshiba e-studio 287CSL	TJGF12996
Raymond Elementary	Toshiba e-Studio 8508A	CIHF11767
Raymond Elementary	HP Laser Jet Pro M402dn	JPBDY16953
RSU 14 District Bldg	HP Color Laser Jet M452dn	VNB3B32474
RSU 14 District Bldg	HP Color Laser Jet M452dn	VNB3B32481
RSU 14 District Bldg	HP Color Laser Jet M452dn	VNB3B32480
RSU 14 District Bldg	Toshiba e-Studio 5506AC	CHHF11244
RSU 14 District Bldg	HP Color Laser Jet M452dn	VNB3B32483

Building	Make/Model	Serial Number
RSU 14 District Bldg	HP Laser Jet Pro M402dn	JPBDY16983
RSU 14 District Bldg	HP Color Laser Jet M452dn	VNB3B32473
RSU 14 District Bldg	Toshiba e-Studio 7508A	CIHF11074
RSU 14 School Transportation	HP Color Laser Jet M452dn	VNB3B32478
Windham High	HP Color Laser Jet M452dn	VNB3M37231
Windham High	HP Color Laser Jet M452dn	VNB3M40724
Windham High	Toshiba e-Studio 3555c	C7CF58699
Windham High	HP Color Laser Jet M452dn	VNB3M37236
Windham High	HP Laser Jet Pro M402dn	JPBDY10468
Windham High	Toshiba e-Studio 8508A	CIIF12138
Windham High	HP Laser Jet Pro M402dn	JPBDY10472
Windham High	Toshiba e-Studio 5508A	CIIF12379
Windham High	Toshiba e-Studio 8508A	CIIF11852
Windham High	HP Color Laser Jet M452dn	VNB3M37234
Windham High	Toshiba e-Studio 6508A	CIIF11876
Windham High	Toshiba e-Studio 3555c	C7CF58856
Windham High	HP Color Laser Jet M452dn	VNB3M37238
Windham High	Toshiba e-Studio 4505AC	CFGF44639
Windham High	HP Color Laser Jet M452dn	VNB3M37235
Windham High	HP Laser Jet Pro M402dn	JPBDY10481
Windham High	Toshiba e-Studio 3555c	C7CF58845
Windham High	HP Laser Jet Pro M402dn	JPBDY10471
Windham High	Toshiba e-Studio 8508A	CIIF11808
Windham High	HP Laser Jet Pro M402dn	JPBDY10469
Windham High	Toshiba e-Studio 3555c	C7CF58791
Windham High	HP Laser Jet Pro M402dn	JPBDY10462
Windham High	Toshiba e-Studio 8508A	CIHF11778

Building	Make/Model	Serial Number
Windham High	Toshiba e-Studio 4505AC	CFHF47150
Windham High	HP Laser Jet Pro M402dn	JPBDY10474
Windham High	Toshiba e-Studio 3555c	C7CF59028
Windham High	HP Color Laser Jet M452dn	VNB3M40734
Windham High	HP Laser Jet Pro M402dn	JPBDY10470
Windham High	HP Color Laser Jet M452dn	VNB3M40718
Windham High	HP Color Laser Jet M452dn	VNB3M37240
Windham High	HP Laser Jet Pro M402dn	JPBDY10478
Windham Middle	Toshiba e-Studio 6508A	CIIF11900
Windham Middle	HP Color Laser Jet M452dn	VNB3B32482
Windham Middle	Toshiba e-Studio 7508A	CIHF11139
Windham Middle	Toshiba e-Studio 3555c	C7CF58855
Windham Middle	HP Color Laser Jet M452dn	VNB3B32464
Windham Middle	Toshiba e-Studio 7508A	CIHF11657
Windham Middle	HP Laser Jet Pro M402dn	JPBDY16986
Windham Primary	HP Laser Jet Pro M402dn	JPBDY16954
Windham Primary	Toshiba e-Studio 8508A	CIIF11798
Windham Primary	Toshiba e-Studio 8508A	CIIF12141
Windham Primary	HP Laser Jet Pro M402dn	JPBDY10473
Windham Primary	Toshiba e-Studio 8508A	CIIF11831
Windham Primary	Toshiba e-Studio 4505AC	CHHF11108
Windham Primary	Toshiba e-Studio 4505AC	CFHF50573
Windham Primary	Toshiba e-Studio 8508A	CIIF11815
Windham Primary	Toshiba e-Studio 8508A	CIIF12142
Windham Primary	HP Laser Jet Pro M402dn	JPBDY10464
Windham Primary	HP Laser Jet Pro M402dn	JPBDY10486
Windham Primary	HP Laser Jet Pro M402dn	JPBDY16988

Owned Equipment

Building	Make/Model	Serial Number
Field Allen School	HP Laser Jet Pro M401dn	VNG4N01770
Field Allen School	HP Laser Jet Pro M401dn	VNB3N04790
Field Allen School	HP Laser Jet Pro M401dn	VNB3N04792
Field Allen School	HP Laser Jet Pro M401dn	VNB3N04856
Field Allen School	HP Laser Jet Pro M401dn	VNB3N04786
Field Allen School	HP Laser Jet Pro M401dn	VNB3N04659
Field Allen School	HP Laser Jet Pro M401dn	VNB4F00041
Field Allen School	HP Laser Jet Pro M401dn	VNB3N04652
Field Allen School	HP Laser Jet Pro M401dn	VNB4M00084
Field Allen School	Toshiba e-Studio 756	CKE210719
Jordan-Small Middle	HP Laser Jet Pro M401dne	PHGFD48781
Jordan-Small Middle	HP Laser Jet Pro M401dn	VNB3X04622
Jordan-Small Middle	HP Laser Jet Pro M401dn	VNB4F00034
Jordan-Small Middle	Toshiba e-Studio 856	CRD210791
Jordan-Small Middle	HP Laser Jet Pro M401dn	VNB3N04787
Jordan-Small Middle	HP Laser Jet Pro M401dn	VNB3H07016
Jordan-Small Middle	HP Laser Jet Pro M401dn	VNB4F00028
Jordan-Small Middle	HP Laser Jet Pro M401dn	VNB4M00090
Jordan-Small Middle	HP Laser Jet Pro M402dn	PHBQC41374
Jordan-Small Middle	Toshiba e-Studio 456	C2D236055
Katahdin Program	Toshiba e-Studio 3040c	CND219478
Manchester School	HP Laser Jet Pro M401dn	VNB3H07015
Manchester School	Toshiba e-Studio 4540c	CMD218320
Manchester School	HP Laser Jet Pro M401dn	VNB3X04628
Manchester School	HP Laser Jet Pro M401dn	VNB3B07036
Manchester School	HP Laser Jet Pro M401dn	VNB3H07012
Manchester School	HP Laser Jet Pro M401dn	VNB3H06983

Building	Make/Model	Serial Number
Manchester School	HP Laser Jet Pro M401dn	VNB3B07038
Manchester School	HP Laser Jet Pro M401dn	VNB3H07014
Raymond Elementary	Toshiba e-Studio 556	CGEC16793
Raymond Elementary	HP Laser Jet 400 M401n	VNB3N13281
RSU 14 District Bldg	HP Laser Jet Pro M401dn	VNB4M00087
RSU 14 District Bldg	HP Laser Jet Pro M401dn	VNB3N04865
RSU 14 District Bldg	Samsung SCX-4623FW	Z4YSBFFB502059K
RSU 14 District Bldg	HP Laser Jet Pro M401dn	VNB4F00022
RSU 14 District Bldg	Samsung SCX-4623FW	Z4YSBFFB200750P
RSU 14 District Bldg	Samsung SCX-4623FW	Z4YSBFFZA00004Z
RSU 14 District Bldg	Samsung SCX-4623FW	Z4YSBFFB200760Z
RSU 14 District Bldg	Samsung SCX-4623FW	Z4YSBFFB900602A
RSU 14 District Bldg	Samsung SCX-4623FW	Z4YSBFFZC01086E
RSU 14 District Bldg	Toshiba e-Studio 456	C2D235912
RSU 14 District Bldg	HP Laser Jet 600 M602	CNCCG580X6
RSU 14 District Bldg	Samsung SCX-4623FW	Z4YSBFFB501025E
RSU 14 School Transportation	Toshiba e-Studio 3040c	CNB326928
Windham High	HP Laser Jet Pro M401dn	VNB4F00015
Windham High	HP Laser Jet Pro M401dn	VNB4F00039
Windham High	HP Laser Jet Pro M401dn	VNB4F00032
Windham High	HP Laser Jet Pro M401dn	VNB4F00030
Windham High	Samsung SCX-4623FW	Z4YSBFFB801401E
Windham High	HP Laser Jet Pro M401dn	VNB3N04794
Windham High	HP Laser Jet Pro M401dn	VNB4F00027
Windham High	HP Laser Jet Pro M401dn	VNB4F00013
Windham High	Samsung SCX-4623FW	Z4YSBFFB102606X
Windham High	Toshiba e-Studio 456	C2D235883
Windham High	HP Laser Jet Pro M401dn	VNB3N04854
Windham High	HP Laser Jet Pro M401dn	VNB4F00031

Building	Make/Model	Serial Number
Windham High	HP Laser Jet Pro M401dn	VNB4F00018
Windham High	HP Laser Jet Pro M402dn	PHBQC41397
Windham High	HP Laser Jet Pro M401dn	VNB3N04788
Windham High	Toshiba e-Studio 456	C2D236072
Windham High	HP Laser Jet Pro M401dn	VNB3N04852
Windham High	HP Color Laser Jet M452dn	VNB3M37230
Windham High	HP Laser Jet Pro M401dn	VNB3N04861
Windham High	HP Laser Jet Pro M401dn	VNB4F00033
Windham High	HP Laser Jet Pro M401dn	VNB3N04851
Windham High	HP Laser Jet 400 M401n	VNB3H07001
Windham High	HP Laser Jet Pro M401dn	VNB4F00023
Windham High	HP Laser Jet Pro M401dn	VNB4F00026
Windham High	HP Laser Jet Pro M401dn	VNB4F00040
Windham High	HP Laser Jet Pro M401dn	VNB4F00029
Windham High	HP Laser Jet Pro M401dn	VNB3N04864
Windham High	HP Laser Jet Pro M401dn	VNB3N04797
Windham High	HP Laser Jet Pro M401dn	VNB3N04857
Windham High	HP Laser Jet Pro M401dn	VNB3N04850
Windham High	HP Laser Jet Pro M401dn	VNB4M00098
Windham High	HP Laser Jet Pro M401dn	VNB4M00097
Windham High	HP Laser Jet Pro M401dn	VNB4F00025
Windham High	HP Laser Jet Pro M401dn	VNB3N04853
Windham High	HP Laser Jet Pro M401dne	PHGFD48672
Windham High	HP Laser Jet Pro M401dn	VNB3N04798
Windham High	HP Laser Jet Pro M401dn	VNB4F00016
Windham High	HP Laser Jet Pro M401dn	VNB3N04802
Windham High	HP Laser Jet Pro M401dn	VNB4F00042
Windham High	Toshiba e-Studio 856	CRD210777
Windham High	HP Laser Jet Pro M401dn	VNB4F00044

Building	Make/Model	Serial Number
Windham High	Toshiba e-Studio 756	CKE210656
Windham High	HP Laser Jet Pro M401dn	VNB3N04821
Windham High	HP Laser Jet Pro M401dn	VNB4M00088
Windham High	HP Laser Jet Pro M401dn	VNG4N01748
Windham High	HP Laser Jet Pro M401dn	VNB4M00089
Windham High	HP Laser Jet Pro M401dn	VNB4F00035
Windham Middle	Kyocera FS-C5350DN	QVQ1Z05199
Windham Middle	HP Laser Jet Pro M401dn	VNB3N04658
Windham Middle	Toshiba e-Studio 756	CKE210744
Windham Middle	HP Color Laser Jet M452dn	VNB3M94312
Windham Middle	HP Laser Jet Pro M401dn	VNB4M00093
Windham Middle	HP Laser Jet Pro M401dn	VNB4M00094
Windham Middle	HP Laser Jet Pro M401dn	VNB3N04791
Windham Middle	HP Laser Jet Pro M401dn	VNB4M00095
Windham Middle	HP Laser Jet Pro M401dn	VNB3N13288
Windham Middle	HP Laser Jet Pro M401dn	VNB4M00100
Windham Middle	HP Laser Jet Pro M401dn	VNB4M00085
Windham Middle	HP Laser Jet Pro M401dn	VNB4F00024
Windham Middle	HP Laser Jet Pro M401dn	VNB3N04789
Windham Middle	HP Laser Jet Pro M401dn	VNB3N04649
Windham Middle	HP Laser Jet Pro M401dn	VNB4M00092
Windham Middle	HP Laser Jet Pro M401dn	VNB3N04800
Windham Middle	HP Laser Jet Pro M401dn	VNB4M00077
Windham Middle	HP Laser Jet Pro M401dn	VNB4M00091
Windham Middle	HP Color Laser Jet M451dn	CNDG324730
Windham Middle	HP Laser Jet Pro M401dn	VNB3N04804
Windham Middle	HP Laser Jet Pro M401dn	VNB3N04801
Windham Middle	HP Laser Jet Pro M401dn	VNB4M00096
Windham Middle	HP Laser Jet Pro M401dn	VNB3N04783

Building	Make/Model	Serial Number
Windham Middle	HP Laser Jet Pro M401dn	VNB3N04799
Windham Middle	HP Laser Jet Pro M401dne	PHGFD36835
Windham Middle	HP Laser Jet Pro M401dn	VNB3N04805
Windham Primary	HP Laser Jet Pro M401dn	VNB3N04665
Windham Primary	HP Laser Jet Pro M401dn	VNB3N04661
Windham Primary	HP Laser Jet Pro M401dn	VNB3N04651
Windham Primary	HP Laser Jet Pro M401dn	VNB3N04657
Windham Primary	Toshiba e-Studio 456	C2D235903
Windham Primary	Kyocera FS-C5350DN	QVQ1Z05202
Windham Primary	HP Laser Jet Pro M401dn	VNB3N04653



Service and Supply Contract - Client

Specialized Purchasing Consultants ("SPC") hereby contracts with _____ ("Client") to provide comprehensive services, supplies, and maintenance to equipment described on Schedule A ("Equipment") using the Contracted Vendor shown below at a cost per print shown on said Schedule A, commencing on _____ and terminating on June 30, _____. This Service and Supply Contract ("Contract") shall exclude only the cost of paper, transparencies, and staples. Refer to Schedule A for Additional Provisions, if any.

SPC assumes responsibility for all billing and vendor payment. SPC shall invoice Client one-half of the annual projected number of pages multiplied by the cost per print listed on Schedule A. This semi-annual billing will take place July 1 and January 1. Actual meter reads will be collected by SPC either electronically or from Client staff during the month of June. A final Reconciliation spreadsheet and invoice will then be completed and sent to client. Upon payment of each billing invoice during the year, SPC will reimburse Contracted Vendor appropriately. Client is responsible for making payment in full within 30 days of said invoicing to avoid suspension of supplies by Contracted Vendor.

On July 1 of each calendar year during the afore-mentioned term, SPC shall credit Client any unused prepaid pages to Client if fewer copies were made by Client during the Contract period ending on or before June 30 annually than were originally estimated under this Contract for such period. If more pages were consumed than billed in the combined semi-annual billing, an overage invoice will be generated. Following semi-annual billing will be based on previous year volume.

On July 1 of each calendar year during the term of this Contract, SPC, at its option, may increase such costs per print under this Service and Supply Contract by 5% or by a percentage equal to the increase during the immediately preceding 12-month period of "The Consumer Price Index for All Urban Consumers (CPI-U) for the U.S. City Average for All Items, 1982-84 = 100," whichever is less.

Client may terminate Contract at any time with a 30-day written notice. Client will be required to provide final meter reads on all Equipment listed on Schedule A, including those added during the Contract term. Any credits owed to Client after reconciling actual usage versus projected will be paid to Client. Client must return any unused consumables to Contracted Vendor.

**AGREED AND ACCEPTED BY:
Specialized Purchasing Consultants**

By: Skip Tilton

Title: President/Owner

Date: _____

Signature: _____

**AGREED AND ACCEPTED BY:
Client**

By: _____

Title: _____

Date: _____

Signature: _____

Named Contracted Vendor: *Vendor*

Warranty

Vendor ("Contracted Vendor") hereby warrants to _____ ("Client") that, if any such Equipment described on Schedule B attached hereto malfunctions through no fault of Client during the term commencing on _____ and terminating on June 30, _____, and such Equipment cannot be repaired promptly, Contracted Vendor, *through Specialized Purchasing Consultants*, will replace such Equipment with equipment which is equal to or superior in quality and capabilities to the Equipment being replaced, at no cost to Client. Refer to Schedule B for Additional Provisions to this Warranty.

The only exclusions to this Warranty are as follows:

- 1. This Warranty will expire for an item of Equipment when the Warranty Life of such item of Equipment in number of copies, as shown on Schedule B attached hereto, is exceeded;
- 2. This Warranty will expire for an item of Equipment at the date which is ten years after such Equipment was first offered for sale or lease by the manufacturer as shown on Schedule B attached hereto.

AGREED AND ACCEPTED BY:
Vendor

By:

Title:

Date:

Signature: _____

AGREED AND ACCEPTED BY:
Client

By:

Title:

Date:

Signature: _____

StarDoc User Names

Name	User Name
Amy Hanrahan	ahanrahan
Austin Carr	acarr
Bill Hanson	bhanson
Bob Hickey	bhickey
Brody Artes	bartes
Chris Howell	chowell
Cindy Kennie	ckennie
Corey McAllister	cmcallister
Danielle Burian	dburian
Danielle Donnini	ddonnini
David Stigile	dstigile
Deb Hutchinson	dhutchinson
Donn Davis	ddavis
Drew Patin	dpatin
Jason Lanoie	jlanoie
Kate Thomas	kthomas
Kirby Kenyon	kkenyon
Kyle Rhoads	krhoads
Maria Parisi	bcre
Michael Pelletier	mpelletier
Mike Duffy	mduffy
Mike Kelly	mkelly
Mindi McKinney	mmckinney
Natalie Skovran	nskovran
Pam Hecker	phecker
Peter Mullen	pmullen
Randy Crockett	rcrockett
Ryan Rumsey	rrumsey
Sanford Prince	sprince
Shane Christy	schristy

Name

User Name

*If you need to verify your password or if you need to add users, please contact Alex Webster at awebster@spccopypro.com



Benefits of partnering with SPC

Top Benefits to **our CLIENTS**:

1. Cooperative Buying

By definition, is a model that allows a group of buyers with a common interest to pool their buying power in order to negotiate more favorable pricing and better service. SP's model allows you to pick your preferred vendor

- SP's pricing is so strong ***we pay for our own fee*** by acquiring prices lower than what you can do on your own.
- We will ***save you money*** benefiting from the combined purchasing power of more than 69 clients with over 4,100 devices doing more than 239 million copies and prints per year. Annually, we purchase approximately 1,100 units running over 80 million prints
- We will ***save you time*** by preparing your bid, negotiating with vendors manufacturers, presenting a total bid analysis and managing the implementation.
- We will ***save you frustration***. We manage your contracts for up to five years from the date of installation.

2. Exclusive STARDoc Software

- Maps all devices and sets up Interactive Live Floor Plans of all printing devices, showing you a Before and After upgrade look provides a visual for all decision makers over the next five years.
- STAR Doc studies your printing habits and is able to predict your year-end cost months in advance, before you receive your year-end reconciliation invoice.
- Sets up your next year's budget at the click of a mouse.

3. Simplified Billing Program

- Removes the confusion out of billing.
- Eliminates variety of invoices from multiple vendors that come annually and or quarterly.
- With SP's Simplified Billing Program, TW invoices are sent each year from ONE billing source.
- Reconciles all of your devices at the end of the year you pay only for what you use no minimums.

4. Five-Year Equipment Replacement Schedule

- SP's staff surveys key locations that determine life of existing equipment.
- Specs out new equipment needed does not allow vendors to undersell during the bidding process.
- Manages the entire bid process down to the install.

5. Annual Report

- A crucial document that extends the life of your equipment, often getting 8 to 10 years of guaranteed performance flags copying trends within your organization such as over usage
- You get an overview of your current equipment situation, reports associated with copying and printing costs and, if needed, recommendations for addressing situations posing a problem

6. Vendor Neutral

- SP does not recommend just one brand we suggest what's best for you with serviceability in mind.
- We present you with the bid results and offer recommendations, yet the decision is yours to make.

SPC has been serving their clients since 1988, saving millions of dollars along the way.

***Based on current actual volumes and CPCs, SPC has generated
Annual Savings of more than \$2.5 million for all of our clients.
That translates into Savings of more than \$12 million over five years!***



SPC Values Our Vendors

Overall Benefits to our VENDORS

- Opportunities brought to you Annually, we purchase approximately 1,100 units running over 80 million prints
- SPC is well respected in the industry
- SPC values our vendors and speaks highly of them to our clients.
- National contracts that are all negotiated with the manufacturers at your disposal

Vendor Benefits Pre-Bid & During the Bid Process

- Sharing of previous bid results that help you to negotiate with your manufacturers.
- On-Site Survey of client requirements including mapping all devices.
- Writing of the *Five-Year Equipment Replacement Schedule* Bid Specs .
- Controls the Bid Specs Not allowing any vendor to underbid or offer discontinued equipment .
- A chance to sell your Value Add directly to our clients after the bids are in. Customer has the right to pay more than low bid.

Vendor Benefits Before & During Installation

- Digital Needs Analysis Matching up the machine to installation site.
- Schedule and coordinate Vendor meeting with client.
- Cover the cost of SPC surge protectors, electrical wiring, computer interface and any unexpected cost
- Manage installation.
- Audit installation.
- Capture final meter reads for old contracts.
- Lose books on old devices contracts.

Vendor Ongoing Support

- Early meter reads.
- Simplified Billing SPC collects service funds for the Vendor.
- Collection of all meter reads annually and reconciling them with the client and Vendor.
- STAR Loc System for Tracking And Reporting Documents manages the budget.
- Annual Reports that flag machines that are being overused and underused thus improving reliability.
- Mediating warranty issues in sensitive locations.

Why do some vendors hesitate to bid?

- Vendors worry that bidding will reduce their margins.
- If word gets out on pricing, they feel that their other customers will call and ask for similar prices.
- Lose control of their account as winning bidder may beat their pricing.
- SPC bids are designed to keep specs equal for all, no chance of providing a lesser piece of equipment.

SPC manages over 4,100 pieces of equipment;
Our relationship with our vendors has never been stronger!