



Specialized Purchasing Consultants

1491 East Side River Road

Dummer, NH 03588

(800) 750-1538

www.spccopypro.com

2017-2018 Annual Report

Year - End Photocopier Analysis

With projected costs for 2018-19

Kathy O'Blenes
NHSAU 49 - Governor Wentworth
Regional
P.O. Box 190
Wolfeboro Falls, NH 03896



Specialized Purchasing Consultants Corp.
Serving Maine & New Hampshire since 1988

October 2018

Skip Tilton
President

Corporate Office:
1491 East Side River Drive
Dummer, NH 03588
(800) 750-1538

Kathy O'Blenes
NHSAU 49 - Governor Wentworth Regional
P.O. Box 190
Wolfeboro Falls, NH 03896

VISIT US ON THE WEB:
www.spccopypro.com

Dear Kathy:

We at Specialized Purchasing Consultants, wish to thank you for your continued confidence in us. Our relationship is **now 13 years strong**, and we hope that your trust in us and this relationship will continue for many years to come.

The following Annual Report provides an overview of last year's reprographic equipment usage and status. Recommendations are included based on usage and remaining life expectancy to address potential problem areas. This will help to avoid needless down time and improve equipment reliability.

Every year we strive to improve or enhance our services to save our clients time, money, and effort. For the past number of years, numerous new features have been implemented to benefit our clients such as Simplified Billing, FMAudit automated meter reading, STARDoc and IT Asset Management. We hope you have found these services to be beneficial and time-saving. We are very pleased to offer these services at no additional charge.

During our meeting with you to review this report, we would like to take some time to review our current services as well as new services soon to be offered and how you can benefit from these services.

Again, we appreciate the opportunity to continue to provide you with the best possible pricing, service, and equipment. If you have any questions or are in need of more information, please let us know.

Sincerely,

Skip Tilton
President

Table of Contents

The SPC Team	3
Equipment Health Status	4
Aging Equipment Summary	5
Non Contracted Devices	6
StarDoc Timeline	7
StarDoc Features	9
StarDoc New Features	11
Annual Black Volume by Building	12
Annual Black Volume Overall	13
Average Student to Copy Usage – Black Only	14
Cost Comparison – Black Only	15
Annual Color Volume by Building	16
Annual Color Volume Overall	17
Average Student to Copy Usage – Color Only	18
Cost Comparison – Color Only	20
Color to Total Volume Percentage	21
Usage Profile for Service & Supplies	22
SPC Service & Supply Cost Savings	100
Projected Equipment Costs by Building - Black	101
Projected Equipment Costs by Building - Color	102
Service & Supply Usage Profile by Vendor - Black	103
Service & Supply Usage Profile by Vendor - Color	104
Reprographic Equipment Assessment	105
Leased Equipment	106
Owned Equipment	116
Service and Supply Contract - Client	117
Warranty	118
StarDoc User Names	119
Benefits of partnering with SPC	120
SPC Values Our Vendors	121

The SPC Team...

would like to personally thank you for your continued trust and confidence!

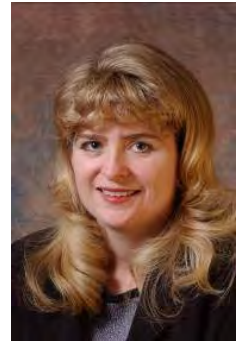


Skip Tilton, President

Billie Jo Tilton, Vice President

As co-founders of SPC, Billie Jo and I are very proud of our team of professionals. The concept of group purchasing to save millions has grown since 1988 into providing over 16 different managerial services that increase reliability and extend the life of your equipment. However, none of this would have been possible without the loyalty of our clients, many of whom we have assisted for more than 20 years! Together, we have realized the lowest prices

possible while improving the quality of your service and equipment, as well as providing ways to increase your equipment reliability and the ability to monitor and track usage variations throughout the year to keep your costs under control.



Jessica Paradis

Accounting Coordinator

As the new accounting director for SPC, my focus is to ensure transactions are handled with importance, accuracy, and timeliness. My goal is for all communication, with client or vendor, to be satisfactory for all parties. I am

excited to be part of this team, and I am available to answer any billing or contract questions you may have.

Alex Webster

Operations Manager

My top priority is ensuring that our clients receive the absolute best customer service possible. Whether you have a question about your SPC STARDoc site, an upcoming upgrade or your existing equipment, I am here to answer any questions you may have. I am very excited about the new features that we have on STARDoc. We are now able to offer *at no additional charge to our clients* features that normally cost thousands of dollars.



Pam Weed

Client-Vendor Relations

It is always my goal to ensure a good working relationship between clients and vendors. This applies to billing, upgrades, equipment reliability, and everything in between. I am available to assist you with smooth transitions and quick resolutions.

Joel Heffernan

Implementation Specialist

With over 40 years of experience in the copier/printer industry, I am able to deliver knowledgeable assistance before, during, and after equipment changeover. I am available to our clients to address any concerns they may have and to assure our clients have a pleasant experience with SPC.



Robert Dutil

Director of Information Technology

I work behind the scenes to keep everything running smoothly. I appreciate SPC's honesty, work ethic and loyalty, and it is my goal to make sure SPC has the tools it needs to continue improving their technology to better serve their clients and to be as productive as possible. By doing this, our clientele has the ability to monitor their assets and keep their costs down. I am excited about what the future holds for SPC and our clients.

Equipment Health Status

Total Number of Machines:	277
Total Black Photocopiers	35
Total Color Photocopiers	22
Total Black Network Printers	109
Total Color Network Printers	111
Total Removed from Service:	5
# of Units OFF Warranty:	0
# of Units Approaching End of Warranty:	1
# of Units Overused:	0
# of Units Underused:	11
Commencement Date:	8/2/2016
# of Annual Payments Left on Lease	3
All Warranties and Service Contracts Expire:	6/30/2022
SPC's FM Audit Print Management Software Loaded	Yes
Printer Contract	[gu

NOTE: When a machine goes off warranty, it does not mean that the service contract expires. It simply means that if a replacement machine becomes necessary, it may not be at "no charge."

Dear Kathy,

On paper, everything looks pretty good. I would definitely continue to pay down your principal on your capital lease.

It is important to not ignore machines that are being overused. We see 11 printers throughout the district doing less than 500 prints a year. One of our jobs is help flag these kinds of devices so that you can maximize your capital investment as well as minimize the cost of operation on your service contracts. color usage is very high and our new STARDoc features may be very helpful in controlling this cost.

Also, keep in mind there are some powerful print management software that you may want to consider next time around. (See page #11)

Sincerely,
Skip

Aging Equipment Summary

The following equipment is seven or more years from the date they were first offered for sale by the manufacturer. This is a major factor because availability of parts, cost of operation and warranties all become diminished at 10 years from the Date of Introduction. Usage, age, and service history need to be considered to see if they are due for replacement soon.

Building	Department	Make / Model	Serial Number	Vendor Name	Intro Date
SAU 49 District	1st Floor	Konica Minolta BH552	A2WV011007627	KMBS	02/2011

Non Contracted Devices

NHSAU 49 - Governor Wentworth

Make - Model	Serial Number	IP Address	Last Update
HP LASERJET 400 color M451dn	CNDF315195	172.16.100.36	6/1/2018 8:47:27 AM
HP ENVY 4500 SERIES	CN3631P00505X4	172.16.100.86	1/29/2018 6:11:14 AM
HP COLOR LASERJET M452DN	VNB3M12152	ff02:0:0:0:0:0:1	10/11/2018 8:28:12 AM
HP Designjet Z5200 PostScript	CN73R8K00H	192.168.0.53	7/25/2018 1:10:59 PM
ENVY 4520 series	TH72A4K0RQ0660	172.20.2.222	10/11/2018 10:48:44 AM

Machine Count: 5... Our Goal with the next upgrade is to get all non contract devices under a CPC agreement.



1988 Specialized Purchasing Consultants opens its doors

- Began offering equipment at the sales representative's cost with continued cooperative buying power, obtaining competitive rates on leases, equipment, and service and supply contracts.

1999 Improved Annual Reports

- Revised Annual Report format to include new charts and tables for more expansive usage and budget detail
- Initiated 5% cost per print annual increase cap

2001 Solid-Ink Printers and Meter Collection

- Offered low-cost-of-operation solid-ink network printers to help reduce printing costs
- Began collecting meter reads directly from client and submitting to vendors via spreadsheet, providing more accurate and consistent billing

2002 Bond Counsel Review

- Added Bond Counsel Review to endure any and all funding sources provided legal documentation to meet State statutes and regulations

2003 Contracts and Warranties Updated

- Service & Supply Contracts revised to reflect SPC's commitment to managing a client's account for five years while allowing the client a 30-day cancel option
- Warranty revised to protect equipment, guaranteeing service or replacement at no charge, even if a vendor goes out of business

2005 Economic Municipal Relief Fund Established

2006 Data Collection Agent

- Data Collection Agent Software offered for meter collection convenience

2007 Insurance Fund

- Insurance Fund established for equipment upgrades with SPC monitoring installations from start to finish. SPC absorbs cost of returning leased equipment, electrical or network drop installs or upgrades, and surge protectors (ESPs)

2012 STARDoc - Print Management Software Developed and Implemented

- Live Floor Plans allow IT administrators to move devices around on their own floor plans
- Low-end network printers added to contracts and monitored
- Simplified Billing introduced

2013 STARDoc - Daily Tracking

- Meters gathered daily to track usage

2014 STARDoc - Monthly Audits

- Users can see a monthly snapshot of current usage and estimated projections

2015 STARDoc - Mapping Options and Asset Management

- Allows mapping of other IT devices (Wireless Access Points, IP Cameras, Projectors, VoIP Phones, etc.)
- IT Asset Management tracks all IT purchases, warranty expirations, etc.

2018 STARDoc - Improved Pinpointing of Budget and Communications

- Improved pinpointing of machines projected to go over budget
- Facilitate communication with your vendor's service manager
- Request service history on any given printer or copier



- **Cost Projection by Department or Building** - Who Benefits? Accounts Payable, Business Manager and Superintendent
 - Allows you to formulate next year's budgets as early as December
 - Allows you to see the projected usage bill in advance
 - Tabulate total budgets and total costs district wide
 - Volume or cost pages allow you to pinpoint specific machines on the floor plans
 - Timeline - allowing you to go back to see how your budget compares to previous years
- **Map your devices on Floorplans** - Who Benefits? Business Manager, IT
 - Identifies detailed information (IP address, serial number, vendor ID, CPC, consumed volume, toner and service alerts)
 - Device information tab will allow you to easily access the web interface of the printer/copier
 - Non-Reporting device listing for devices that haven't reported for more than 2 weeks
 - Asset Management (Servers, Wireless Access Points, IP Cameras, Projectors, Apple TV's)
- **Floor Plans Admin** - Who Benefits? Business Manager and IT
 - Allows IT and Business Manager to move devices around on Floor Plan
 - Paper trail of device locations after summer break
 - Will show Previous Devices, Present Equipment and Proposed Equipment

- **Contacts Page** - Who Benefits? Business Manager and IT
 - Control Access and Permissions to Star Doc
 - Toggle Email all (Toner, Service Monthly Audits)
- **Device Listing Page** - Who Benefits? Business Manager and IT
 - Centralized location for detailed information of District's assets
 - Exportable device listing to Excel or PDF
 - Tracks additional non-contract devices
 - IP Addresses and MAC addresses automatically imported
 - Strikethrough on machines that have been removed
- **Monthly Audits** - Who Benefits? Business Manager and Superintendent
 - Monthly Cost Snapshot
 - Shows amount of devices not reporting to help improve accuracy of projections
- **Timeline:** Who Benefits? Business Manager
 - Track historical volume and cost per building
- **“Last Sync Date”** Who Benefits? IT Manager
 - Shows the last time that FMAudit synced for that client

New Features

Industry Wide

Consult: Secure Print Release, also known as Follow Me Print or Find-Me Printing.

- Print to a single global queue, walk up, and collect at any device.
- The application allows jobs to be held at the server level and released when the user engages it at any multi-function device (MFD). It allows users to print at any area within the building as long as the MFD has the features needed by the user.

STARDoc

NEW! Over Budget Report feature

- Allows user to select the Over Budget feature to produce a report showing each machine currently running over projected volumes, listed with highest amount over first.
- Catch overused equipment early, before equipment begins to break down due to over use.
- Request service history on any machine right through STARDoc.

Over Budget



Room:

Room 201 Principal's Office

Make & Model:

Canon IRC5051

Serial Number:

GQM65369

IP Address:

172.16.10.145

Projected Amount Over Budget:

\$1,902

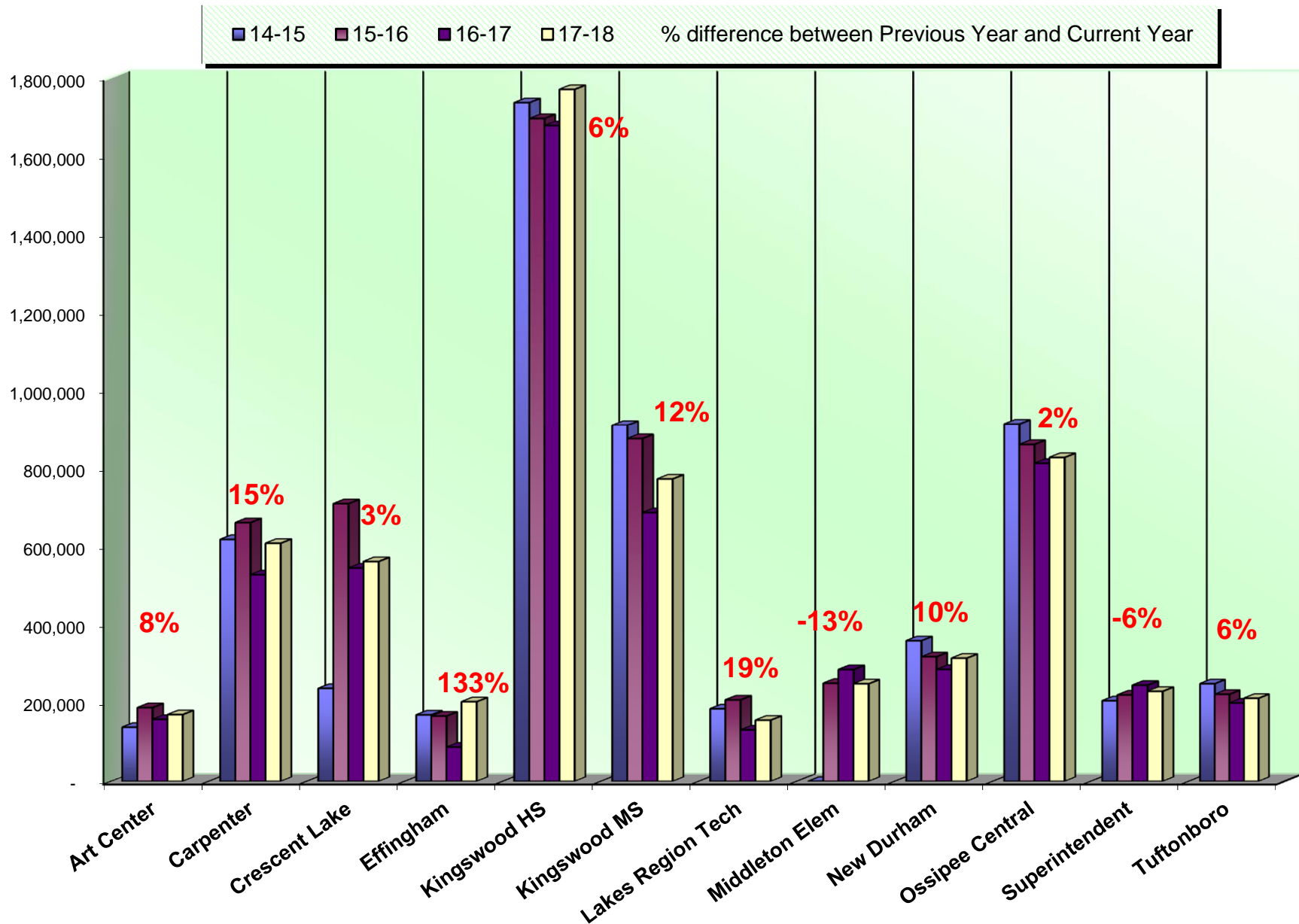
Previous

Next

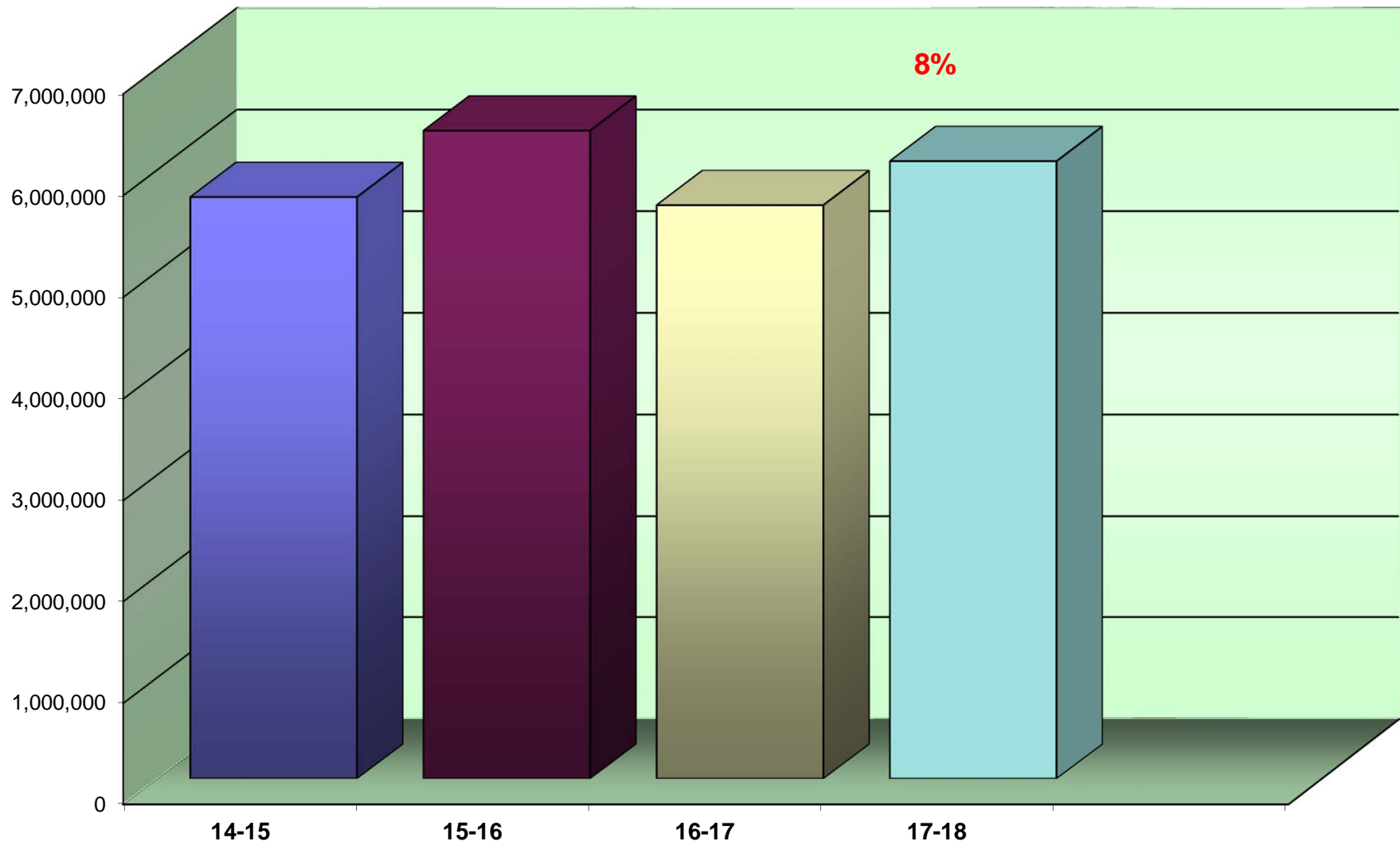
Request Service History

Close

Annual Black Volume by Building



Annual Black Volume Overall



% amount equals the overall increase or decrease between Previous Year and Current Year

Average Student to Copy Usage – Black Only

Using the projected costs by building as the basis, this table represents the projected average usage and cost per student for each building.

<i>Building Name</i>	<i>Student Population</i>	<i>Annual Volume</i>	<i>Total School Cost*</i>	<i>Annual Copies Per Student</i>	<i>Annual Cost Per Student</i>
Carpenter Elementary	262	608,766	\$16,377.43	2,324	\$62.51
Crescent Lake	201	562,313	\$15,460.41	2,798	\$76.92
Effingham Elementary	111	204,501	\$5,622.95	1,842	\$50.66
Kingswood Regional Art Center	0	171,380	\$4,776.72	0	\$0.00
Kingswood Regional High	774	1,770,176	\$48,014.48	2,287	\$62.03
Kingswood Regional Middle	397	772,638	\$21,156.88	1,946	\$53.29
Lakes Region Technical Center	0	157,167	\$4,292.06	0	\$0.00
Middleton Elementary	133	250,562	\$6,732.48	1,884	\$50.62
New Durham Elementary	164	316,055	\$8,591.54	1,927	\$52.39
Ossipee Central	300	827,457	\$22,406.15	2,758	\$74.69
SAU 49 District	0	231,193	\$6,528.15	0	\$0.00
Tuftonboro Central	117	213,324	\$5,748.28	1,823	\$49.13
Totals	2,459	6,085,532	\$165,707.54	2,475	\$67.39

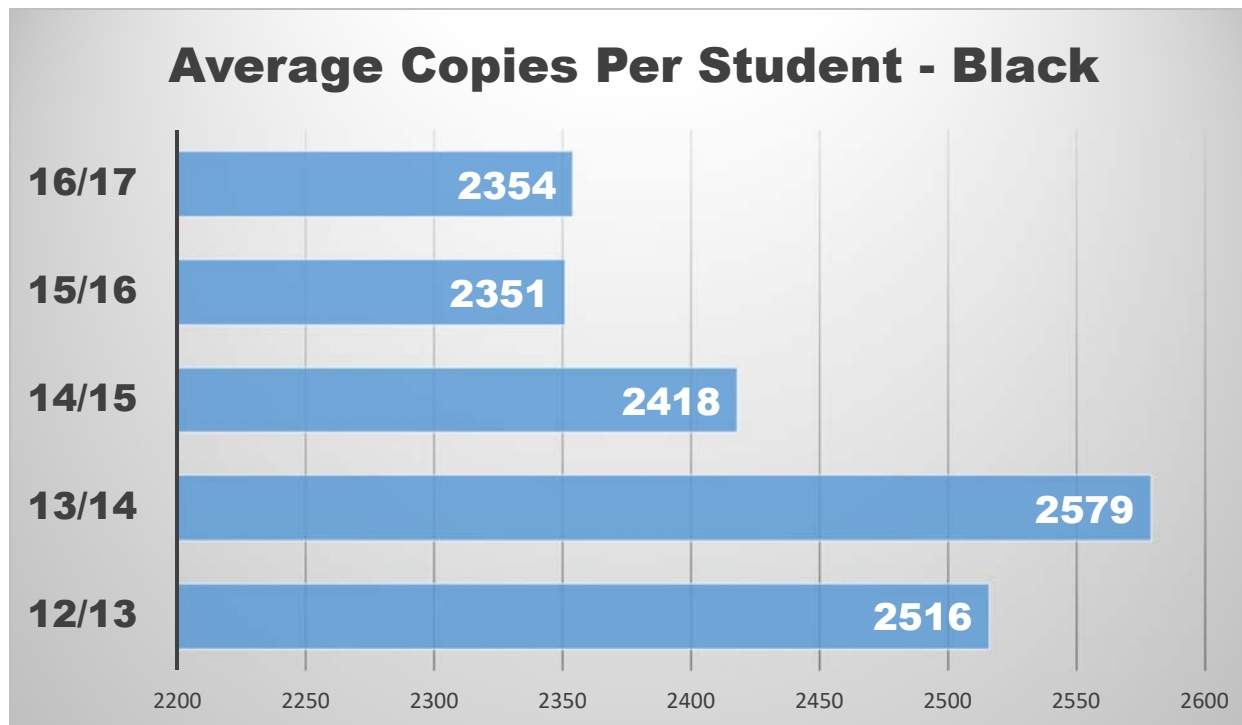
**Total School Cost refers to the cost of Service & Supplies, Paper, and Equipment. See Projected Equipment Costs by Building table later in this Report.*

Cost Comparison – Black Only

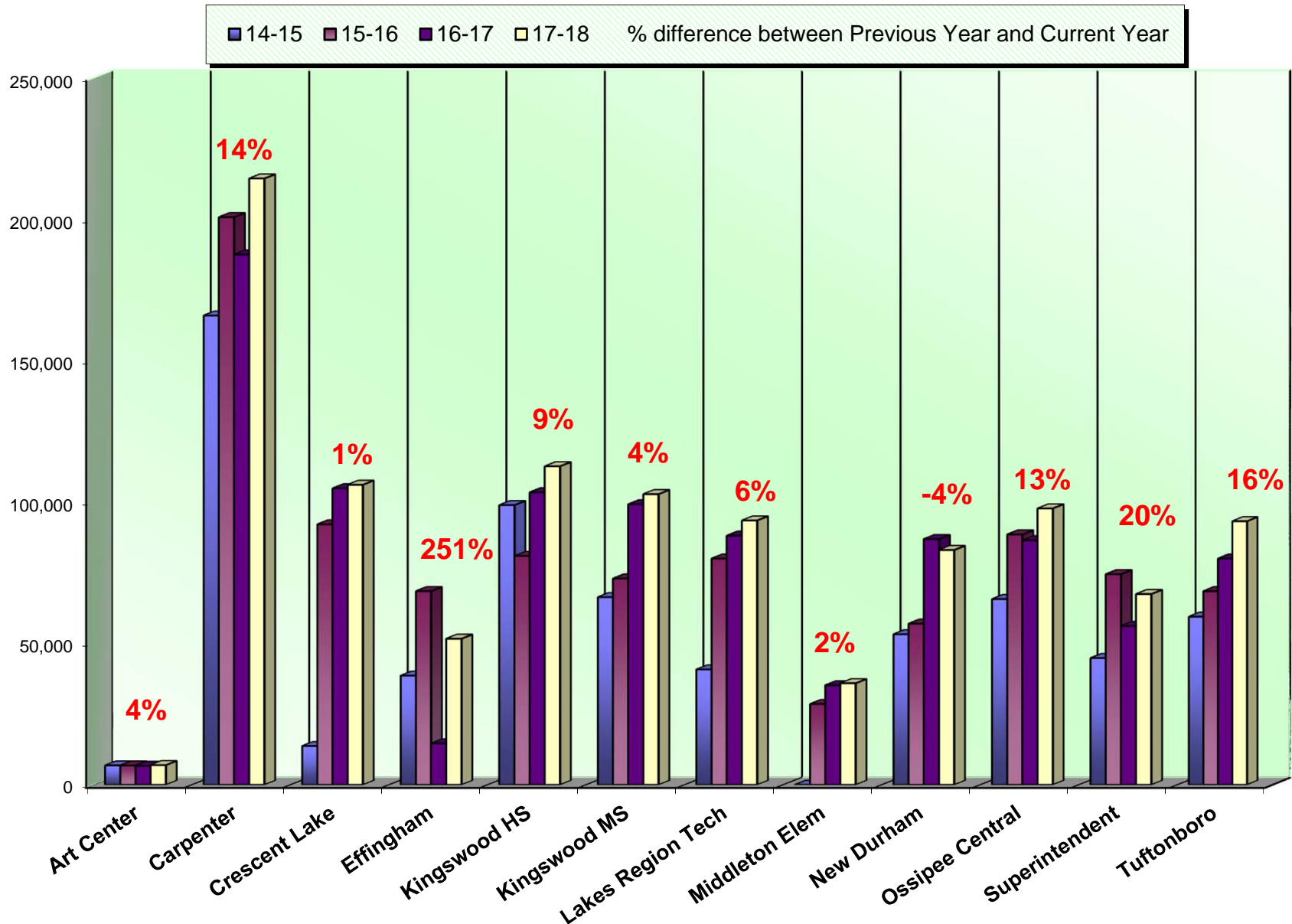
This is an SPC Comparison contrasting your district with other client school districts throughout the states of Maine, New Hampshire, and Vermont. By comparing to the Average Student to Copy Usage, this will help you to set up future budgets if student populations increase or decrease within the district or if you plan to build an addition or a new school.

	Total Student Population	Total Annual Volume	Total District Cost*	Annual Copies Per Student	Annual Cost Per Student
All Schools w/Student Populations	88,906	209,301,843	\$4,194,294.05	2,354	\$47.17

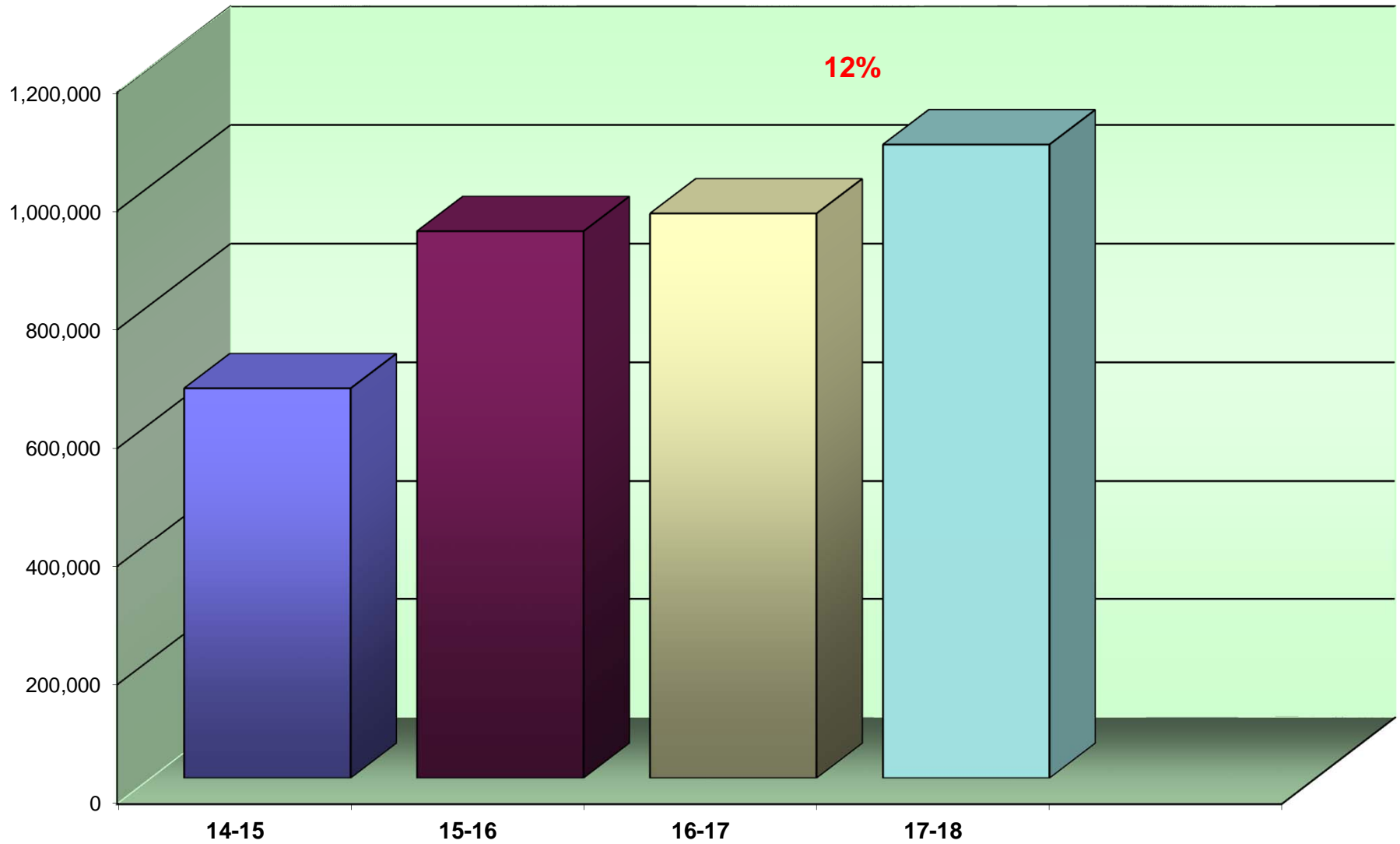
* Total District Cost refers to the cost of Service, Supplies, Paper, and Equipment



Annual Color Volume by Building



Annual Color Volume Overall



% amount equals the overall increase or decrease between Previous Year and Current Year

Average Student to Copy Usage – Color Only

Using the projected costs by building as the basis, this table represents the projected average usage and cost per student for each building.

<i>Building Name</i>	<i>Student Population</i>	<i>Annual Volume</i>	<i>Total School Cost*</i>	<i>Annual Copies Per Student</i>	<i>Annual Cost Per Student</i>
Carpenter Elementary	262	214,401	\$12,075.97	818	\$46.09
Crescent Lake	201	106,383	\$5,878.74	529	\$29.25
Effingham Elementary	111	52,086	\$2,897.21	469	\$26.10
Kingswood Regional Art Center	0	7,037	\$416.66	0	\$0.00
Kingswood Regional High	774	112,891	\$6,489.73	146	\$8.38
Kingswood Regional Middle	397	103,075	\$5,688.28	260	\$14.33
Lakes Region Technical Center	0	93,786	\$5,124.74	0	\$0.00
Middleton Elementary	133	36,328	\$1,925.65	273	\$14.48
New Durham Elementary	164	83,361	\$4,427.48	508	\$27.00
Ossipee Central	300	98,035	\$5,468.94	327	\$18.23
SAU 49 District	0	67,838	\$3,895.10	0	\$0.00
Tuftonboro Central	117	93,520	\$5,043.47	799	\$43.11

<i>Building Name</i>	<i>Student Population</i>	<i>Annual Volume</i>	<i>Total School Cost*</i>	<i>Annual Copies Per Student</i>	<i>Annual Cost Per Student</i>
Totals	2,459	1,068,741	\$59,331.97	435	\$24.13

**Total School Cost refers to the cost of Service & Supplies, Paper, and Equipment. See Projected Equipment Costs by Building table later in this report. Note: New STARDoc tool will flag the High Color Usage. See Page # 11 under new STARDoc features! Industry Ratios are 185 color prints per student per year! Also, please contact our SPC technical team to provide training to your staff. Please keep in mind that your Color usage is definitely higher than other districts than the industry average.*

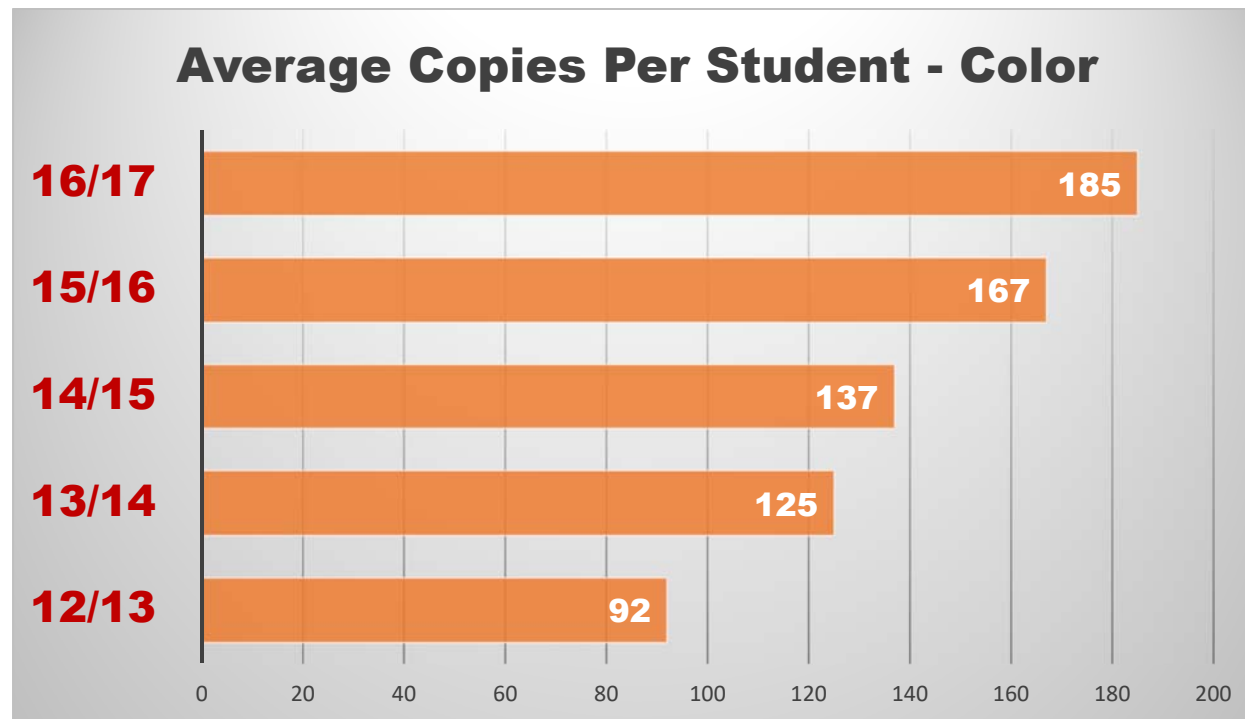
<i>District Wide Black Totals</i>	<i>6,085,532</i>	<i>\$23,105.02</i>
<i>District Wide Color Totals</i>	<i>1,068,741</i>	<i>\$57,718.30</i>

Cost Comparison – Color Only

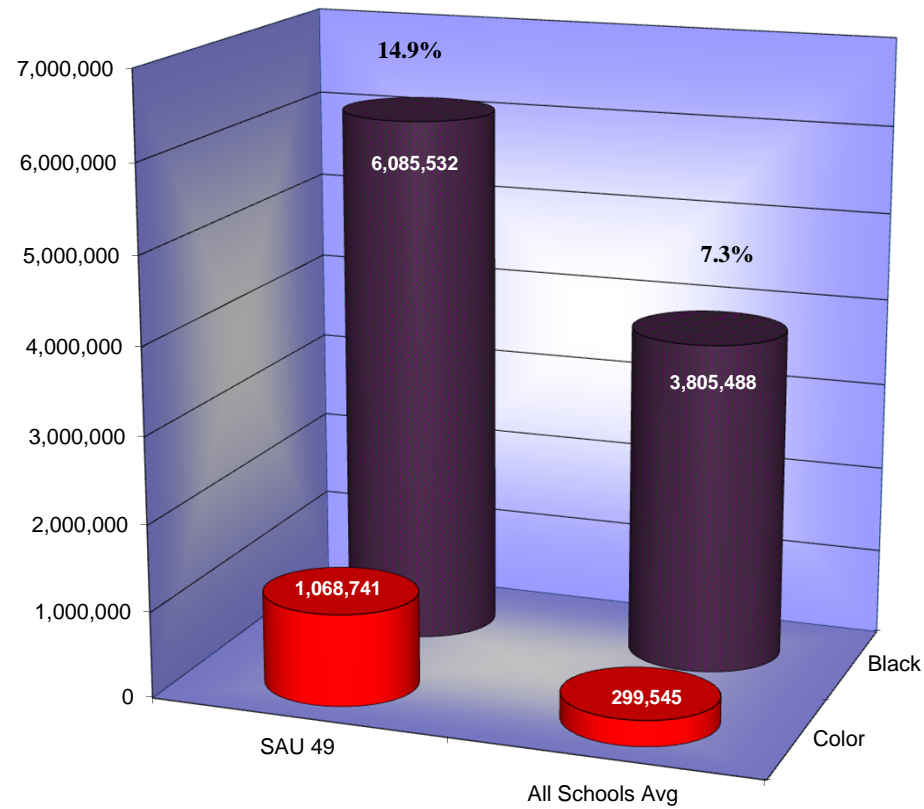
This is an SPC Comparison contrasting your district with other client school districts throughout the states of Maine, New Hampshire, and Vermont. By comparing to the Average Student to Copy Usage, this will help you to set up future budgets if student populations increase or decrease within the district or if you plan to build an addition or a new school.

	<i>Total Student Population</i>	<i>Total Annual Volume</i>	<i>Total District Cost*</i>	<i>Annual Copies Per Student</i>	<i>Annual Cost Per Student</i>
All Schools w/Student Populations	88,906	16,474,996	\$820,060.24	185	\$9.22

* Total District Cost refers to the cost of Service and Supplies only; paper and equipment costs are calculated into the Black Comparison chart.



Color to Total Volume Percentage



Usage Profile for Service & Supplies

The usage analysis shown here provides an overview of the usage of each piece of equipment currently under contract and monitored by SPC. Projected Volume comparison is based on projected volume figured on your most recent Five-Year Equipment Replacement Schedule.

<i>Make-Model / Speed</i> <i>Serial Number / Vendor ID</i> <i>Life / Intro Date</i> <i>Vendor</i>				<i>Date of Last Upgrade: 8/2/2016</i> <i>2017-18</i> <i>Annual</i> <i>Volume</i>		<i>Cost/Copy</i> <i>Annual Cost</i>	<i>Recommendations</i>
7/1/2017 Meter	6/30/2018 Meter						
CARPENTER ELEMENTARY							
Main Office							
Konica Minolta BH3301P / 35 PPM A63P015000238 / 9467 6577 500,000 / 11/2015 Black Network Printer	2,235 0	5,658 0	3,423 0	\$0.006280 \$21.50 \$0.00000 \$0.00			None at this time.
KMBS							
Konica Minolta BHC554 / 55 PPM A5AY011000594 / 9342 4471 3,000,000 / 08/2012 Color Photocopier	483,704 492,095	606,245 658,863	122,541 166,768	\$0.003280 \$401.93 \$0.05399 \$9,003.80			None at this time.
KMBS							
Media Center							
Konica Minolta BHC3110 / 32 PPM A6DT012100491 / 9467 6523 750,000 / 06/2014 Color Laser MFP	1,626 2,846	2,383 4,549	757 1,703	\$0.006280 \$4.75 \$0.05760 \$98.09			None at this time.
KMBS							

<i>Make-Model / Speed Serial Number / Vendor ID Life / Intro Date</i>					<i>Date of Last Upgrade: 8/2/2016</i>
<i>Vendor</i>	<i>7/1/2017 Meter</i>	<i>6/30/2018 Meter</i>	<i>2017-18 Annual Volume</i>	<i>Cost/Copy Annual Cost</i>	<i>Recommendations</i>
CARPENTER ELEMENTARY					
Media Mobile Cart					
Konica Minolta BHC3100P / 32 PPM A6DR012104352 / 9467 1639 750,000 / 06/2014 Color Network Printer KMBS	6,211 8,343	17,080 24,746	10,869 16,403	\$0.006280 \$68.26 \$0.05760 \$944.81	None at this time.
Room 102					
Konica Minolta BH3301P / 35 PPM A63P015000171 / 9467 6576 500,000 / 11/2015 Black Network Printer KMBS	955 0	1,955 0	1,000 0	\$0.006280 \$6.28 \$0.00000 \$0.00	None at this time.
Room 107 Conference Downstairs					
Konica Minolta BH3320 / 35 PPM A6WP011006371 / 9467 6604 750,000 / 02/2014 Black Laser MFP KMBS	14,070 0	28,583 0	14,513 0	\$0.004100 \$59.50 \$0.00000 \$0.00	None at this time.
Konica Minolta BHC3100P / 32 PPM A6DR012104272 / 9467 1601 750,000 / 06/2014 Color Network Printer KMBS	3,621 9,983	7,798 21,319	4,177 11,336	\$0.006280 \$26.23 \$0.05760 \$652.95	None at this time.

<i>Make-Model / Speed</i>	<i>Date of Last Upgrade: 8/2/2016</i>				
<i>Serial Number / Vendor ID</i>					
<i>Life / Intro Date</i>					
<i>Vendor</i>	<i>7/1/2017 Meter</i>	<i>6/30/2018 Meter</i>	<i>2017-18 Annual Volume</i>	<i>Cost/Copy Annual Cost</i>	<i>Recommendations</i>
CARPENTER ELEMENTARY					
Room 121 Staff Work Room					
Konica Minolta BH958 / 95 PPM	163,041	359,304	196,263	\$0.003280	None at this time.
A796011000304 / 9467 6645				\$643.74	
5,000,000 / 06/2016	0	0	0	\$0.00000	
Black Photocopier				\$0.00	
KMBS					
Room 123 SPED					
Konica Minolta BHC3100P / 32 PPM	4,069	9,714	5,645	\$0.006280	None at this time.
A6DR012104348 / 9467 1640				\$35.45	
750,000 / 06/2014	412	1,366	954	\$0.05760	
Color Network Printer				\$54.95	
KMBS					
Room 209					
Konica Minolta BHC3100P / 32 PPM	152	211	59	\$0.006280	Underused!
A6DR012104353 / 9467 1638				\$0.37	
750,000 / 06/2014	118	179	61	\$0.05760	
Color Network Printer				\$3.51	
KMBS					
Room 218 Alcove					
Konica Minolta BH958 / 95 PPM	239,212	477,784	238,572	\$0.003280	None at this time.
A796011000303 / 9465 0783				\$782.52	
5,000,000 / 06/2016	0	0	0	\$0.00000	
Black Photocopier				\$0.00	
KMBS					

<i>Make-Model / Speed Serial Number / Vendor ID Life / Intro Date</i>					<i>Date of Last Upgrade: 8/2/2016</i>
<i>Vendor</i>	<i>7/1/2017 Meter</i>	<i>6/30/2018 Meter</i>	<i>2017-18 Annual Volume</i>	<i>Cost/Copy Annual Cost</i>	<i>Recommendations</i>
CARPENTER ELEMENTARY					
Room 218 Alcove Teachers' Work Room					
Konica Minolta BHC3100P / 32 PPM A6DR012104357 / 9467 1637 750,000 / 06/2014 Color Network Printer KMBS	3,053	7,511	4,458	\$0.006280 \$28.00	None at this time.
	3,630	10,123	6,493	\$0.05760 \$374.00	
Room 226 Guidance Office					
Konica Minolta BH3320 / 35 PPM A6WP011006373 / 9467 6575 750,000 / 02/2014 Black Laser MFP KMBS	1,106	1,704	598	\$0.004100 \$2.45	None at this time.
	0	0	0	\$0.00000 \$0.00	
Room 226 Tierney					
Konica Minolta BHC3100P / 32 PPM A6DR012104338 / 9467 1641 750,000 / 06/2014 Color Network Printer KMBS	1,755	6,771	5,016	\$0.006280 \$31.50	None at this time.
	3,318	12,950	9,632	\$0.05760 \$554.80	
Room 233 Osgood					
Konica Minolta BHC3100P / 32 PPM A6DR012104360 / 9467 1636 750,000 / 06/2014 Color Network Printer KMBS	584	1,459	875	\$0.006280 \$5.50	None at this time.
	897	1,948	1,051	\$0.05760 \$60.54	

<i>Make-Model / Speed</i>					<i>Date of Last Upgrade: 8/2/2016</i>
<i>Serial Number / Vendor ID</i>			<i>2017-18</i>		
<i>Life / Intro Date</i>	<i>7/1/2017</i>	<i>6/30/2018</i>	<i>Annual</i>	<i>Cost/Copy</i>	
<i>Vendor</i>	<i>Meter</i>	<i>Meter</i>	<i>Volume</i>	<i>Annual Cost</i>	<i>Recommendations</i>
CARPENTER ELEMENTARY					
			Subtotals Black	608,766	\$2,117.98
			Subtotals Color	214,401	\$11,747.47

<i>Make-Model / Speed Serial Number / Vendor ID Life / Intro Date</i>					<i>Date of Last Upgrade: 8/2/2016</i>
<i>Vendor</i>	<i>7/1/2017 Meter</i>	<i>6/30/2018 Meter</i>	<i>2017-18 Annual Volume</i>	<i>Cost/Copy Annual Cost</i>	<i>Recommendations</i>
CRESCENT LAKE					
6th Grade Hall Closet					
Konica Minolta BH3320 / 35 PPM A6WP011006327 / 9467 6570 750,000 / 02/2014 Black Laser MFP KMBS	10,884 0	19,071 0	8,187 0	\$0.004100 \$33.57 \$0.00000 \$0.00	None at this time.
Main Office					
Konica Minolta BHC3100P / 32 PPM A6DR012104310 / 9467 1634 750,000 / 06/2014 Color Network Printer KMBS	1,898 6,845	3,775 12,670	1,877 5,825	\$0.006280 \$11.79 \$0.05760 \$335.52	None at this time.
Konica Minolta BHC458 / 45 PPM A79M011000435 / 9467 6512 1,000,000 / 08/2016 Color Photocopier KMBS	61,465 59,800	115,871 119,938	54,406 60,138	\$0.003280 \$178.45 \$0.05115 \$3,076.06	None at this time.
Room 104 Resource Room					
Konica Minolta BHC3100P / 32 PPM A6DR012104280 / 9467 1632 750,000 / 06/2014 Color Network Printer KMBS	6,324 8,880	12,228 20,658	5,904 11,778	\$0.006280 \$37.08 \$0.05760 \$678.41	None at this time.

Make-Model / Speed Serial Number / Vendor ID Life / Intro Date Vendor					Date of Last Upgrade: 8/2/2016	
	7/1/2017 Meter	6/30/2018 Meter	2017-18 Annual Volume	Cost/Copy Annual Cost	Recommendations	
CRESCENT LAKE						
Room 119 Nurse						
Konica Minolta BH3301P / 35 PPM A63P015000230 / 9467 6623 500,000 / 11/2015 Black Network Printer KMBS	1,235 0	2,474 0	1,239 0	\$0.006280 \$7.78 \$0.00000 \$0.00	None at this time.	
Room 127 Principal						
Konica Minolta BHC3100P / 32 PPM A6DR012104347 / 9467 1635 750,000 / 06/2014 Color Network Printer KMBS	874 697	2,025 1,745	1,151 1,048	\$0.006280 \$7.23 \$0.05760 \$60.36	None at this time.	
Room 128 Psych Office						
Konica Minolta BHC3100P / 32 PPM A6DR012104210 / 9467 1631 750,000 / 06/2014 Color Network Printer KMBS	1,803 5,349	3,844 10,973	2,041 5,624	\$0.006280 \$12.82 \$0.05760 \$323.94	None at this time.	
Room 138 Media - Computer Lab						
Konica Minolta BH3320 / 35 PPM A6WP011006375 / 9467 6571 750,000 / 02/2014 Black Laser MFP KMBS	11,581 0	22,863 0	11,282 0	\$0.004100 \$46.26 \$0.00000 \$0.00	None at this time.	

<i>Make-Model / Speed Serial Number / Vendor ID Life / Intro Date</i>					<i>Date of Last Upgrade: 8/2/2016</i>
<i>Vendor</i>	<i>7/1/2017 Meter</i>	<i>6/30/2018 Meter</i>	<i>2017-18 Annual Volume</i>	<i>Cost/Copy Annual Cost</i>	<i>Recommendations</i>
CRESCENT LAKE					
Room 151 Computer Lab					
Konica Minolta BHC3100P / 32 PPM A6DR012104294 / 9467 1633 750,000 / 06/2014 Color Network Printer KMBS	4,449	9,235	4,786	\$0.006280 \$30.06 \$0.05760 \$931.91	None at this time.
Room 174 Kitchen Office					
Konica Minolta BH3301P / 35 PPM A63P015000583 / 9467 6624 500,000 / 11/2015 Black Network Printer KMBS	1,218	2,292	1,074	\$0.006280 \$6.74 \$0.00000 \$0.00	None at this time.
Special Education					
Konica Minolta BHC454 / 45 PPM A5C0011000611 / 9348 4171 1,000,000 / 07/2012 Color Photocopier KMBS	242,664	265,681	23,017	\$0.003280 \$75.50 \$0.05399 \$312.66	None at this time.
Staff Room					
Konica Minolta BH754 / 75 PPM A55V011000632 / 9342 4476 4,000,000 / 03/2013 Black Photocopier KMBS	1,381,999	1,829,348	447,349	\$0.004100 \$1,834.13 \$0.00000 \$0.00	None at this time.

<i>Make-Model / Speed</i>	<i>Date of Last Upgrade: 8/2/2016</i>				
<i>Serial Number / Vendor ID</i>			<i>2017-18</i>		
<i>Life / Intro Date</i>	<i>7/1/2017</i>	<i>6/30/2018</i>	<i>Annual</i>	<i>Cost/Copy</i>	
<i>Vendor</i>	<i>Meter</i>	<i>Meter</i>	<i>Volume</i>	<i>Annual Cost</i>	<i>Recommendations</i>
CRESCENT LAKE					
			Subtotals Black	562,313	\$2,281.39
			Subtotals Color	106,383	\$5,718.87

<i>Make-Model / Speed</i>	<i>Date of Last Upgrade: 8/2/2016</i>				
<i>Serial Number / Vendor ID</i>					
<i>Life / Intro Date</i>					
<i>Vendor</i>	<i>7/1/2017 Meter</i>	<i>6/30/2018 Meter</i>	<i>2017-18 Annual Volume</i>	<i>Cost/Copy Annual Cost</i>	<i>Recommendations</i>
EFFINGHAM ELEMENTARY					
Library					
Konica Minolta BH3320 / 35 PPM	1,904	2,997	1,093	\$0.004100	None at this time.
A6WP011006376 / 9465 0703				\$4.48	
750,000 / 02/2014	0	0	0	\$0.00000	
Black Laser MFP				\$0.00	
KMBS					
Main Office Secretary					
Konica Minolta BH3301P / 35 PPM	770	1,435	665	\$0.006280	None at this time.
A63P015000504 / 9465 0711				\$4.18	
500,000 / 11/2015	0	0	0	\$0.00000	
Black Network Printer				\$0.00	
KMBS					
Main Office Work Area					
Konica Minolta BHC458 / 45 PPM	66,941	133,086	66,145	\$0.003280	None at this time.
A79M011000383 / 9465 0679				\$216.96	
1,000,000 / 08/2016	37,185	65,361	28,176	\$0.05115	
Color Photocopier				\$1,441.20	
KMBS					
Room 104 Office					
Konica Minolta BHC3100P / 32 PPM	287	1,588	1,301	\$0.006280	None at this time.
A6DR012104302 / 9467 0717				\$8.17	
750,000 / 06/2014	1,821	5,607	3,786	\$0.05760	
Color Network Printer				\$218.07	
KMBS					

Make-Model / Speed Serial Number / Vendor ID Life / Intro Date Vendor					Date of Last Upgrade: 8/2/2016	
	7/1/2017 Meter	6/30/2018 Meter	2017-18 Annual Volume	Cost/Copy Annual Cost	Recommendations	
EFFINGHAM ELEMENTARY						
Room 126K						
Konica Minolta BHC3100P / 32 PPM A6DR012104288 / 9465 0716 750,000 / 06/2014 Color Network Printer KMBS	1,109 0	1,157 2,118	48 2,118	\$0.006280 \$0.30 \$0.05760 \$122.00	None at this time.	
Room 134						
Konica Minolta BHC3100P / 32 PPM A6DR012104229 / 9465 0721 750,000 / 06/2014 Color Network Printer KMBS	776 1,232	1,729 2,650	953 1,418	\$0.006280 \$5.98 \$0.05760 \$81.68	None at this time.	
Room 143						
Konica Minolta BHC3100P / 32 PPM A6DR012104299 / 9465 0720 750,000 / 06/2014 Color Network Printer KMBS	1,295 0	1,658 2,703	363 2,703	\$0.006280 \$2.28 \$0.05760 \$155.69	None at this time.	
Room 144						
Konica Minolta BHC3100P / 32 PPM A6DR012105410 / 9467 1575 750,000 / 06/2014 Color Network Printer KMBS	92 183	279 325	187 142	\$0.006280 \$1.17 \$0.05760 \$8.18	Underused!	

Date of Last Upgrade: 8/2/2016					
Make-Model / Speed					
Serial Number / Vendor ID			2017-18		
Life / Intro Date	7/1/2017	6/30/2018	Annual	Cost/Copy	
Vendor	Meter	Meter	Volume	Annual Cost	
Recommendations					
EFFINGHAM ELEMENTARY					
Room 148 Library					
Konica Minolta BHC3100P / 32 PPM	7,531	16,326	8,795	\$0.006280	None at this time.
A6DR012104198 / 9465 0718				\$55.23	
750,000 / 06/2014	7,579	20,681	13,102	\$0.05760	
Color Network Printer				\$754.68	
KMBS					
Room 156 Guidance					
Konica Minolta BHC3100P / 32 PPM	245	479	234	\$0.006280	None at this time.
A6DR012104300 / 9465 0719				\$1.47	
750,000 / 06/2014	378	1,019	641	\$0.05760	
Color Network Printer				\$36.92	
KMBS					
Room 161					
Konica Minolta BH3301P / 35 PPM	1,460	3,836	2,376	\$0.006280	None at this time.
A63P015000585 / 9465 0712				\$14.92	
500,000 / 11/2015	0	0	0	\$0.00000	
Black Network Printer				\$0.00	
KMBS					
Teachers' Room					
Konica Minolta BH754 / 75 PPM	1,045,650	1,167,991	122,341	\$0.004200	None at this time.
A55V011000914 / 9348 4145				\$513.83	
4,000,000 / 03/2013	0	0	0	\$0.00000	
Black Photocopier				\$0.00	
KMBS					

<i>Make-Model / Speed</i>	<i>Date of Last Upgrade: 8/2/2016</i>				
<i>Serial Number / Vendor ID</i>			<i>2017-18</i>		
<i>Life / Intro Date</i>	<i>7/1/2017</i>	<i>6/30/2018</i>	<i>Annual</i>	<i>Cost/Copy</i>	
<i>Vendor</i>	<i>Meter</i>	<i>Meter</i>	<i>Volume</i>	<i>Annual Cost</i>	<i>Recommendations</i>
EFFINGHAM ELEMENTARY					
			Subtotals Black	204,501	\$828.98
			Subtotals Color	52,086	\$2,818.42

Date of Last Upgrade: 8/2/2016					
Make-Model / Speed Serial Number / Vendor ID Life / Intro Date Vendor	7/1/2017 Meter	6/30/2018 Meter	2017-18 Annual Volume	Cost/Copy Annual Cost	Recommendations
KINGSWOOD REGIONAL ART CENTE					
Campus Security					
Konica Minolta BH3301P / 35 PPM A63P015000479 / 9348 5557 500,000 / 11/2015 Black Network Printer KMBS	2,101 0	4,172 0	2,071 0	\$0.006280 \$13.01 \$0.00000 \$0.00	None at this time.
Room 108					
Konica Minolta BH754 / 75 PPM A55V011000202 / 9348 4177 4,000,000 / 03/2013 Black Photocopier KMBS	571,216 0	721,028 0	149,812 0	\$0.004200 \$629.21 \$0.00000 \$0.00	None at this time.
Room 115					
Konica Minolta BHC3350 / 35 PPM A4Y4011014121 / 9467 6511 750,000 / 01/2014 Color Laser MFP KMBS	3,589 477	7,010 1,102	3,421 625	\$0.004100 \$14.03 \$0.05760 \$36.00	None at this time.
Room 128					
Konica Minolta BH3301P / 35 PPM A63P015000626 / 9348 5871 500,000 / 11/2015 Black Network Printer KMBS	1,041 0	2,938 0	1,897 0	\$0.006280 \$11.91 \$0.00000 \$0.00	None at this time.

Date of Last Upgrade: 8/2/2016					
Make-Model / Speed					
Serial Number / Vendor ID					
Life / Intro Date					
Vendor	7/1/2017 Meter	6/30/2018 Meter	2017-18 Annual Volume	Cost/Copy Annual Cost	Recommendations
KINGSWOOD REGIONAL ART CENTE					
Room 136					
Konica Minolta BHC3100P / 32 PPM	3,193	7,096	3,903	\$0.006280	None at this time.
A6DR012104194 / 9467 1605				\$24.51	
750,000 / 06/2014	1,426	3,342	1,916	\$0.05760	
Color Network Printer				\$110.36	
KMBS					
Room 143					
Konica Minolta BH4700P / 50 PPM	7,247	14,889	7,642	\$0.006280	None at this time.
A63N011014870 / 9348 5558				\$47.99	
2,000,000 / 04/2013	0	0	0	\$0.00000	
Black Network Printer				\$0.00	
KMBS					
Room 146					
Konica Minolta BHC3100P / 32 PPM	233	1,311	1,078	\$0.006280	None at this time.
A6DR012104170 / 9467 1613				\$6.77	
750,000 / 06/2014	912	2,355	1,443	\$0.05760	
Color Network Printer				\$83.12	
KMBS					
Room 147					
Konica Minolta BHC3100P / 32 PPM	1,331	2,887	1,556	\$0.006280	None at this time.
A6DR012104192 / 9467 1616				\$9.77	
750,000 / 06/2014	3,330	6,383	3,053	\$0.05760	
Color Network Printer				\$175.85	
KMBS					

Date of Last Upgrade: 8/2/2016					
Make-Model / Speed					
Serial Number / Vendor ID			2017-18		
Life / Intro Date	7/1/2017	6/30/2018	Annual	Cost/Copy	
Vendor	Meter	Meter	Volume	Annual Cost	
Recommendations					
KINGSWOOD REGIONAL HIGH					
Attendance Office					
Konica Minolta BH4020 / 42 PPM	11,895	35,739	23,844	\$0.004100	None at this time.
A6WD011004951 / 8702 4990				\$97.76	
1,000,000 / 02/2014	0	0	0	\$0.00000	
Black Laser MFP				\$0.00	
KMBS					
Konica Minolta BHC3100P / 32 PPM	952	1,949	997	\$0.006280	None at this time.
A6DR012104204 / 9467 1623				\$6.26	
750,000 / 06/2014	2,157	4,890	2,733	\$0.05760	
Color Network Printer				\$157.42	
KMBS					
Custodian's Office					
Konica Minolta BH3301P / 35 PPM	1,600	6,750	5,150	\$0.006280	None at this time.
A63P015000523 / 9467 6639				\$32.34	
500,000 / 11/2015	0	0	0	\$0.00000	
Black Network Printer				\$0.00	
KMBS					
Faculty Work Room					
Konica Minolta BH958 / 95 PPM	603,373	1,227,269	623,896	\$0.003280	None at this time.
A796011000249 / 9467 6520				\$2,046.38	
5,000,000 / 06/2016	0	0	0	\$0.00000	
Black Photocopier				\$0.00	
KMBS					

<i>Make-Model / Speed</i>	<i>Date of Last Upgrade: 8/2/2016</i>				
<i>Serial Number / Vendor ID</i>					
<i>Life / Intro Date</i>					
<i>Vendor</i>	<i>7/1/2017 Meter</i>	<i>6/30/2018 Meter</i>	<i>2017-18 Annual Volume</i>	<i>Cost/Copy Annual Cost</i>	<i>Recommendations</i>
KINGSWOOD REGIONAL HIGH					
Front Office					
Konica Minolta BH3301P / 35 PPM	5,157	12,136	6,979	\$0.006280	None at this time.
A63P015000498 / 9348 5555				\$43.83	
500,000 / 11/2015	0	0	0	\$0.00000	
Black Network Printer				\$0.00	
KMBS					
Guidance Office					
Konica Minolta BH4700P / 50 PPM	18,899	43,300	24,401	\$0.006280	None at this time.
A63N011014871 / 9467 6622				\$153.24	
2,000,000 / 04/2013	0	0	0	\$0.00000	
Black Network Printer				\$0.00	
KMBS					
Konica Minolta BH754 / 75 PPM	2,151,656	2,229,278	77,622	\$0.004200	None at this time.
A55V011000609 / 9348 4178				\$326.01	
4,000,000 / 03/2013	0	0	0	\$0.00000	
Black Photocopier				\$0.00	
KMBS					
Room 110 Special Ed					
Konica Minolta BH4700P / 50 PPM	55	11,426	11,371	\$0.006280	None at this time.
A63N011014873 / 9467 6626				\$71.41	
2,000,000 / 04/2013	0	0	0	\$0.00000	
Black Network Printer				\$0.00	
KMBS					

<i>Make-Model / Speed</i>	<i>Date of Last Upgrade: 8/2/2016</i>				
<i>Serial Number / Vendor ID</i>					
<i>Life / Intro Date</i>					
<i>Vendor</i>	<i>7/1/2017 Meter</i>	<i>6/30/2018 Meter</i>	<i>2017-18 Annual Volume</i>	<i>Cost/Copy Annual Cost</i>	<i>Recommendations</i>
KINGSWOOD REGIONAL HIGH					
Room 111					
Konica Minolta BH3301P / 35 PPM	2,672	5,075	2,403	\$0.006280	None at this time.
A63P015000524 / 9342 4916				\$15.09	
500,000 / 11/2015	0	0	0	\$0.00000	
Black Network Printer				\$0.00	
KMBS					
Room 112 Nurse					
Konica Minolta BH3301P / 35 PPM	1,561	3,390	1,829	\$0.006280	None at this time.
A63P015000467 / 9342 4917				\$11.49	
500,000 / 11/2015	0	0	0	\$0.00000	
Black Network Printer				\$0.00	
KMBS					
Room 116					
Konica Minolta BH3301P / 35 PPM	4,057	6,527	2,470	\$0.006280	None at this time.
A63P015000512 / 9342 4918				\$15.51	
500,000 / 11/2015	0	0	0	\$0.00000	
Black Network Printer				\$0.00	
KMBS					
Room 117					
Konica Minolta BH3301P / 35 PPM	3,546	7,224	3,678	\$0.006280	None at this time.
A63P015000477 / 9467 6615				\$23.10	
500,000 / 11/2015	0	0	0	\$0.00000	
Black Network Printer				\$0.00	
KMBS					

<i>Make-Model / Speed</i>	<i>Date of Last Upgrade: 8/2/2016</i>				
<i>Serial Number / Vendor ID</i>					
<i>Life / Intro Date</i>					
<i>Vendor</i>	<i>7/1/2017 Meter</i>	<i>6/30/2018 Meter</i>	<i>2017-18 Annual Volume</i>	<i>Cost/Copy Annual Cost</i>	<i>Recommendations</i>
KINGSWOOD REGIONAL HIGH					
Room 118					
Konica Minolta BH3301P / 35 PPM	3,956	8,808	4,852	\$0.006280	None at this time.
A63P015000521 / 9467 6627				\$30.47	
500,000 / 11/2015	0	0	0	\$0.00000	
Black Network Printer				\$0.00	
KMBS					
Room 119					
Konica Minolta BH3301P / 35 PPM	2,147	2,852	705	\$0.006280	None at this time.
A63P015000528 / 9467 6614				\$4.43	
500,000 / 11/2015	0	0	0	\$0.00000	
Black Network Printer				\$0.00	
KMBS					
Room 120					
Konica Minolta BH3301P / 35 PPM	7,366	13,716	6,350	\$0.006280	None at this time.
A63P015000497 / 9467 6616				\$39.88	
500,000 / 11/2015	0	0	0	\$0.00000	
Black Network Printer				\$0.00	
KMBS					
Room 121					
Konica Minolta BH3301P / 35 PPM	4,720	9,557	4,837	\$0.006280	None at this time.
A63P015000516 / 9467 6617				\$30.38	
500,000 / 11/2015	0	0	0	\$0.00000	
Black Network Printer				\$0.00	
KMBS					

Make-Model / Speed				Date of Last Upgrade: 8/2/2016	
Serial Number / Vendor ID					
Life / Intro Date				2017-18	
Vendor	7/1/2017 Meter	6/30/2018 Meter	Annual Volume	Cost/Copy Annual Cost	Recommendations
KINGSWOOD REGIONAL HIGH					
Room 129					
Konica Minolta BHC3100P / 32 PPM	1,338	2,837	1,499	\$0.006280	None at this time.
A6DR012104281 / 9467 1617				\$9.41	
750,000 / 06/2014	381	755	374	\$0.05760	
Color Network Printer				\$21.54	
KMBS					
Room 130					
Konica Minolta BH3301P / 35 PPM	3,302	6,735	3,433	\$0.006280	None at this time.
A63P015000511 / 9467 6620				\$21.56	
500,000 / 11/2015	0	0	0	\$0.00000	
Black Network Printer				\$0.00	
KMBS					
Room 130c					
Konica Minolta BHC3100P / 32 PPM	1,559	3,806	2,247	\$0.006280	None at this time.
A6DR012104205 / 9467 1621				\$14.11	
750,000 / 06/2014	2,734	7,527	4,793	\$0.05760	
Color Network Printer				\$276.08	
KMBS					
Room 131					
Konica Minolta BH3301P / 35 PPM	4,484	10,885	6,401	\$0.006280	None at this time.
A63P015000529 / 9467 6618				\$40.20	
500,000 / 11/2015	0	0	0	\$0.00000	
Black Network Printer				\$0.00	
KMBS					

<i>Make-Model / Speed</i>	<i>Date of Last Upgrade: 8/2/2016</i>				
<i>Serial Number / Vendor ID</i>					
<i>Life / Intro Date</i>					
<i>Vendor</i>	<i>7/1/2017 Meter</i>	<i>6/30/2018 Meter</i>	<i>2017-18 Annual Volume</i>	<i>Cost/Copy Annual Cost</i>	<i>Recommendations</i>
KINGSWOOD REGIONAL HIGH					
Room 133					
Konica Minolta BH3301P / 35 PPM	2,521	4,722	2,201	\$0.006280	None at this time.
A63P015000506 / 9467 6619				\$13.82	
500,000 / 11/2015	0	0	0	\$0.00000	
Black Network Printer				\$0.00	
KMBS					
Room 134					
Konica Minolta BHC3100P / 32 PPM	453	1,359	906	\$0.006280	None at this time.
A6DR012104303 / 9467 1614				\$5.69	
750,000 / 06/2014	596	1,974	1,378	\$0.05760	
Color Network Printer				\$79.37	
KMBS					
Room 135					
Konica Minolta BHC3100P / 32 PPM	1,153	2,632	1,479	\$0.006280	None at this time.
A6DR012105214 / 9467 1671				\$9.29	
750,000 / 06/2014	1,640	3,300	1,660	\$0.05760	
Color Network Printer				\$95.62	
KMBS					
Room 137A Inner Office					
Konica Minolta BH4700P / 50 PPM	7,284	15,813	8,529	\$0.006280	None at this time.
A63N011014877 / 9464 8240				\$53.56	
2,000,000 / 04/2013	0	0	0	\$0.00000	
Black Network Printer				\$0.00	
KMBS					

<i>Make-Model / Speed Serial Number / Vendor ID Life / Intro Date</i>					<i>Date of Last Upgrade: 8/2/2016</i>
<i>Vendor</i>	<i>7/1/2017 Meter</i>	<i>6/30/2018 Meter</i>	<i>2017-18 Annual Volume</i>	<i>Cost/Copy Annual Cost</i>	<i>Recommendations</i>
KINGSWOOD REGIONAL HIGH					
Room 138					
Konica Minolta BHC454 / 45 PPM A5C0011000596 / 9342 4470 1,000,000 / 07/2012 Color Photocopier KMBS	250,769	259,658	8,889	\$0.003280 \$29.16	None at this time.
	82,681	84,160	1,479	\$0.05399 \$79.85	
Room 149					
Konica Minolta BHC3100P / 32 PPM A6DR012105230 / 9467 1606 750,000 / 06/2014 Color Network Printer KMBS	3,818	8,143	4,325	\$0.006280 \$27.16	None at this time.
	7,930	16,128	8,198	\$0.05760 \$472.20	
Room 152A					
Konica Minolta BHC3100P / 32 PPM A6DR012104301 / 9467 1619 750,000 / 06/2014 Color Network Printer KMBS	984	1,959	975	\$0.006280 \$6.12	None at this time.
	1,931	4,255	2,324	\$0.05760 \$133.86	
Room 154					
Konica Minolta BH3301P / 35 PPM A63P015000536 / 9467 6603 500,000 / 11/2015 Black Network Printer KMBS	567	1,044	477	\$0.006280 \$3.00	Underused!
	0	0	0	\$0.00000 \$0.00	

<i>Make-Model / Speed</i> <i>Serial Number / Vendor ID</i> <i>Life / Intro Date</i> <i>Vendor</i>					<i>Date of Last Upgrade: 8/2/2016</i> <i>Recommendations</i>	
	<i>7/1/2017</i> <i>Meter</i>	<i>6/30/2018</i> <i>Meter</i>	<i>2017-18</i> <i>Annual</i> <i>Volume</i>	<i>Cost/Copy</i> <i>Annual Cost</i>		
KINGSWOOD REGIONAL HIGH						
Room 154 Graphics						
Konica Minolta BHC308 / 30 PPM A7PY011011294 / 9460 7598 750,000 / 06/2016 Color Photocopier KMBS	509 3,422	1,315 7,442	806 4,020	\$0.004100 \$3.30 \$0.05760 \$231.55	None at this time.	
Room 172						
Konica Minolta BHC3350 / 35 PPM A4Y4011014026 / 9465 0678 750,000 / 01/2014 Color Laser MFP KMBS	9,708 1,524	18,960 3,898	9,252 2,374	\$0.004100 \$37.93 \$0.05760 \$136.74	None at this time.	
Room 175						
Konica Minolta BHC3100P / 32 PPM A6DR012104296 / 9467 1609 750,000 / 06/2014 Color Network Printer KMBS	755 340	1,954 2,144	1,199 1,804	\$0.006280 \$7.53 \$0.05760 \$103.91	None at this time.	
Room 178						
Konica Minolta BH3301P / 35 PPM A63P015000515 / 9467 6598 500,000 / 11/2015 Black Network Printer KMBS	3,187 0	6,182 0	2,995 0	\$0.006280 \$18.81 \$0.00000 \$0.00	None at this time.	

<i>Make-Model / Speed</i> <i>Serial Number / Vendor ID</i> <i>Life / Intro Date</i> <i>Vendor</i>				<i>Date of Last Upgrade: 8/2/2016</i>	
	<i>7/1/2017</i> <i>Meter</i>	<i>6/30/2018</i> <i>Meter</i>	<i>2017-18</i> <i>Annual</i> <i>Volume</i>	<i>Cost/Copy</i> <i>Annual Cost</i>	<i>Recommendations</i>
KINGSWOOD REGIONAL HIGH					
Room 180					
Konica Minolta BHC3100P / 32 PPM A6DR012105202 / 9467 1670 750,000 / 06/2014 Color Network Printer KMBS	1,183 3,500	3,136 8,474	1,953 4,974	\$0.006280 \$12.26 \$0.05760 \$286.50	None at this time.
Room 182 Library					
Konica Minolta BHC3100P / 32 PPM A6DR012104200 / 9467 1622 750,000 / 06/2014 Color Network Printer KMBS	1,289 833	2,614 2,995	1,325 2,162	\$0.006280 \$8.32 \$0.05760 \$124.53	None at this time.
Konica Minolta BHC554 / 55 PPM A5AY011000693 / 9348 4168 3,000,000 / 08/2012 Color Photocopier KMBS	243,297 164,543	291,129 215,502	47,832 50,959	\$0.003280 \$156.89 \$0.05399 \$2,751.28	None at this time.
Room 182B Media					
Konica Minolta BHC3100P / 32 PPM A6DR012105228 / 9467 1612 750,000 / 06/2014 Color Network Printer KMBS	202 406	935 765	733 359	\$0.006280 \$4.60 \$0.05760 \$20.68	None at this time.

<i>Make-Model / Speed</i>	<i>Date of Last Upgrade: 8/2/2016</i>				
<i>Serial Number / Vendor ID</i>					
<i>Life / Intro Date</i>					
<i>Vendor</i>	<i>7/1/2017 Meter</i>	<i>6/30/2018 Meter</i>	<i>2017-18 Annual Volume</i>	<i>Cost/Copy Annual Cost</i>	<i>Recommendations</i>
KINGSWOOD REGIONAL HIGH					
Room 201					
Konica Minolta BHC3110 / 32 PPM	32	134	102	\$0.006280	Underused!
A6DT012102683 / 9467 6640				\$0.64	
750,000 / 06/2014	22	371	349	\$0.05760	
Color Laser MFP				\$20.10	
KMBS					
Room 205					
Konica Minolta BH3301P / 35 PPM	2,287	5,712	3,425	\$0.006280	None at this time.
A63P015000496 / 9467 6621				\$21.51	
500,000 / 11/2015	0	0	0	\$0.00000	
Black Network Printer				\$0.00	
KMBS					
Room 206					
Konica Minolta BH3301P / 35 PPM	1,786	3,399	1,613	\$0.006280	None at this time.
A63P015000527 / 9467 6608				\$10.13	
500,000 / 11/2015	0	0	0	\$0.00000	
Black Network Printer				\$0.00	
KMBS					
Room 210					
Konica Minolta BHC3100P / 32 PPM	957	2,094	1,137	\$0.006280	None at this time.
A6DR012104297 / 9467 1625				\$7.14	
750,000 / 06/2014	272	520	248	\$0.05760	
Color Network Printer				\$14.28	
KMBS					

Make-Model / Speed				Date of Last Upgrade: 8/2/2016	
Serial Number / Vendor ID					
Life / Intro Date				2017-18	
Vendor	7/1/2017 Meter	6/30/2018 Meter	Annual Volume	Cost/Copy Annual Cost	Recommendations
KINGSWOOD REGIONAL HIGH					
Room 211					
Konica Minolta BHC3100P / 32 PPM	3,457	7,403	3,946	\$0.006280	None at this time.
A6DR012105269 / 9467 1608				\$24.78	
750,000 / 06/2014	2,286	4,520	2,234	\$0.05760	
Color Network Printer				\$128.68	
KMBS					
Room 212					
Konica Minolta BHC3100P / 32 PPM	910	2,102	1,192	\$0.006280	None at this time.
A6DR012104223 / 9467 1607				\$7.49	
750,000 / 06/2014	848	1,816	968	\$0.05760	
Color Network Printer				\$55.76	
KMBS					
Room 214					
Konica Minolta BHC3100P / 32 PPM	1,295	2,998	1,703	\$0.006280	None at this time.
A6DR012104206 / 9467 1624				\$10.69	
750,000 / 06/2014	390	715	325	\$0.05760	
Color Network Printer				\$18.72	
KMBS					
Room 215					
Konica Minolta BHC3100P / 32 PPM	798	1,644	846	\$0.006280	None at this time.
A6DR012104209 / 9467 1626				\$5.31	
750,000 / 06/2014	623	1,618	995	\$0.05760	
Color Network Printer				\$57.31	
KMBS					

Make-Model / Speed Serial Number / Vendor ID Life / Intro Date Vendor					Date of Last Upgrade: 8/2/2016	
	7/1/2017 Meter	6/30/2018 Meter	2017-18 Annual Volume	Cost/Copy Annual Cost	Recommendations	
KINGSWOOD REGIONAL HIGH						
Room 216						
Konica Minolta BH3301P / 35 PPM A63P015000517 / 9467 6609 500,000 / 11/2015 Black Network Printer KMBS	3,100 0	6,212 0	3,112 0	\$0.006280 \$19.54 \$0.00000 \$0.00	None at this time.	
Room 217						
Konica Minolta BHC3100P / 32 PPM A6DR012104231 / 9467 1611 750,000 / 06/2014 Color Network Printer KMBS	2,688 1,218	4,798 2,476	2,110 1,258	\$0.006280 \$13.25 \$0.05760 \$72.46	None at this time.	
Room 218						
Konica Minolta BH3301P / 35 PPM A63P015000525 / 9467 6610 500,000 / 11/2015 Black Network Printer KMBS	3,716 0	7,978 0	4,262 0	\$0.006280 \$26.77 \$0.00000 \$0.00	None at this time.	
Room 219						
Konica Minolta BH4700P / 50 PPM A63N011014868 / 9467 6611 2,000,000 / 04/2013 Black Network Printer KMBS	2,603 0	6,036 0	3,433 0	\$0.006280 \$21.56 \$0.00000 \$0.00	None at this time.	

Date of Last Upgrade: 8/2/2016					
Make-Model / Speed					
Serial Number / Vendor ID					
Life / Intro Date					
Vendor	7/1/2017 Meter	6/30/2018 Meter	2017-18 Annual Volume	Cost/Copy Annual Cost	Recommendations
KINGSWOOD REGIONAL HIGH					
Room 221					
Konica Minolta BHC3100P / 32 PPM	2,675	4,844	2,169	\$0.006280	None at this time.
A6DR012105121 / 9467 1669				\$13.62	
750,000 / 06/2014	1,415	2,406	991	\$0.05760	
Color Network Printer				\$57.08	
KMBS					
Room 225					
Konica Minolta BHC3100P / 32 PPM	324	878	554	\$0.006280	None at this time.
A6DR012104232 / 9348 5964				\$3.48	
750,000 / 06/2014	557	1,053	496	\$0.05760	
Color Network Printer				\$28.57	
KMBS					
Room 226					
Konica Minolta BHC3100P / 32 PPM	981	1,952	971	\$0.006280	None at this time.
A6DR012104207 / 9467 1615				\$6.10	
750,000 / 06/2014	201	1,147	946	\$0.05760	
Color Network Printer				\$54.49	
KMBS					
Room 227					
Konica Minolta BH3320 / 35 PPM	2,361	5,339	2,978	\$0.004100	None at this time.
A6WP011006396 / 9467 6612				\$12.21	
750,000 / 02/2014	0	0	0	\$0.00000	
Black Laser MFP				\$0.00	
KMBS					

Date of Last Upgrade: 8/2/2016					
Make-Model / Speed Serial Number / Vendor ID Life / Intro Date Vendor	7/1/2017 Meter	6/30/2018 Meter	2017-18 Annual Volume	Cost/Copy Annual Cost	Recommendations
KINGSWOOD REGIONAL HIGH					
Room 230					
Konica Minolta BH4700P / 50 PPM A63N011014867 / 9467 6632 2,000,000 / 04/2013 Black Network Printer KMBS	18,243 0	35,940 0	17,697 0	\$0.006280 \$111.14 \$0.00000 \$0.00	None at this time.
Room 231					
Konica Minolta BHC3100P / 32 PPM A6DR012104298 / 9467 1620 750,000 / 06/2014 Color Network Printer KMBS	3,394 1,137	10,366 3,887	6,972 2,750	\$0.006280 \$43.78 \$0.05760 \$158.40	None at this time.
Room 232					
Konica Minolta BH3301P / 35 PPM A63P015000530 / 9467 6636 500,000 / 11/2015 Black Network Printer KMBS	0 0	5,609 0	5,609 0	\$0.006280 \$35.22 \$0.00000 \$0.00	None at this time.
Room 233 English Cart					
Konica Minolta BH3301P / 35 PPM A63P015000503 / 500,000 / 11/2015 Black Network Printer KMBS	9,164 0	12,185 0	3,021 0	\$0.006280 \$18.97 \$0.00000 \$0.00	None at this time.

				Date of Last Upgrade: 8/2/2016	
Make-Model / Speed					
Serial Number / Vendor ID					
Life / Intro Date					
Vendor	7/1/2017 Meter	6/30/2018 Meter	2017-18 Annual Volume	Cost/Copy Annual Cost	Recommendations
KINGSWOOD REGIONAL HIGH					
Room 234 - English Cart					
Konica Minolta BH3301P / 35 PPM	2,741	8,969	6,228	\$0.006280	None at this time.
A63P015000526 / 9467 6634				\$39.11	
500,000 / 11/2015	0	0	0	\$0.00000	
Black Network Printer				\$0.00	
KMBS					
Room 234 - English Cart - not in use					
Konica Minolta BH3301P / 35 PPM	0	4,373	4,373	\$0.006280	None at this time.
A63P015000531 / 9467 6635				\$27.46	
500,000 / 11/2015	0	0	0	\$0.00000	
Black Network Printer				\$0.00	
KMBS					
Room 235					
Konica Minolta BH3301P / 35 PPM	2,884	10,734	7,850	\$0.006280	None at this time.
A63P015000510 / 9467 6633				\$49.30	
500,000 / 11/2015	0	0	0	\$0.00000	
Black Network Printer				\$0.00	
KMBS					
Room 244					
Konica Minolta BH3301P / 35 PPM	2,283	4,007	1,724	\$0.006280	None at this time.
A63P015000505 / 9467 6637				\$10.83	
500,000 / 11/2015	0	0	0	\$0.00000	
Black Network Printer				\$0.00	
KMBS					

<i>Make-Model / Speed Serial Number / Vendor ID Life / Intro Date</i>					<i>Date of Last Upgrade: 8/2/2016</i>
<i>Vendor</i>	<i>7/1/2017 Meter</i>	<i>6/30/2018 Meter</i>	<i>2017-18 Annual Volume</i>	<i>Cost/Copy Annual Cost</i>	<i>Recommendations</i>
KINGSWOOD REGIONAL HIGH					
Room 246					
Konica Minolta BH3301P / 35 PPM A63P015000534 / 9467 6638 500,000 / 11/2015 Black Network Printer KMBS	2,092 0	3,578 0	1,486 0	\$0.006280 \$9.33 \$0.00000 \$0.00	None at this time.
Room 248					
Konica Minolta BHC3100P / 32 PPM A6DR012104285 / 9467 1610 750,000 / 06/2014 Color Network Printer KMBS	1,376 1,721	3,186 3,309	1,810 1,588	\$0.006280 \$11.37 \$0.05760 \$91.47	None at this time.
Room 249					
Konica Minolta BH3320 / 35 PPM A6WP011006570 / 9417 6613 750,000 / 02/2014 Black Laser MFP KMBS	3,739 0	5,343 0	1,604 0	\$0.004100 \$6.58 \$0.00000 \$0.00	None at this time.
Konica Minolta BHC3100P / 32 PPM A6DR012105342 / 750,000 / 06/2014 Color Network Printer KMBS	2,468 1,293	5,583 3,755	3,115 2,462	\$0.006280 \$19.56 \$0.05760 \$141.81	None at this time.

					Date of Last Upgrade: 8/2/2016
Make-Model / Speed					
Serial Number / Vendor ID			2017-18		
Life / Intro Date	7/1/2017	6/30/2018	Annual	Cost/Copy	
Vendor	Meter	Meter	Volume	Annual Cost	Recommendations
KINGSWOOD REGIONAL HIGH					
Room 251 - Special Ed Learning Center					
Konica Minolta BHC3100P / 32 PPM	83	584	501	\$0.006280	None at this time.
A6DR012104912 / 9467 1770				\$3.15	
750,000 / 06/2014	3,945	9,474	5,529	\$0.05760	
Color Network Printer				\$318.47	
KMBS					
Room 252					
Konica Minolta BHC3100P / 32 PPM	1,576	2,564	988	\$0.006280	None at this time.
A6DR012104224 / 9467 1603				\$6.20	
750,000 / 06/2014	570	1,194	624	\$0.05760	
Color Network Printer				\$35.94	
KMBS					
Room 253					
Konica Minolta BHC3100P / 32 PPM	548	1,575	1,027	\$0.006280	None at this time.
A6DR012104228 / 9467 1604				\$6.45	
750,000 / 06/2014	186	1,226	1,040	\$0.05760	
Color Network Printer				\$59.90	
KMBS					
Social Studies Office					
Konica Minolta BHC3110 / 32 PPM	520	828	308	\$0.006280	None at this time.
A6DT012101458 / 9467 6641				\$1.93	
750,000 / 06/2014	842	1,339	497	\$0.05760	
Color Laser MFP				\$28.63	
KMBS					

<i>Make-Model / Speed</i>	<i>Date of Last Upgrade: 8/2/2016</i>				
<i>Serial Number / Vendor ID</i>					
<i>Life / Intro Date</i>					
<i>Vendor</i>	<i>7/1/2017 Meter</i>	<i>6/30/2018 Meter</i>	<i>2017-18 Annual Volume</i>	<i>Cost/Copy Annual Cost</i>	<i>Recommendations</i>
KINGSWOOD REGIONAL HIGH					
Teachers' Room					
Konica Minolta BH958 / 95 PPM	798,729	1,562,199	763,470	\$0.003280	None at this time.
A796011000285 / 9467 6521				\$2,504.18	
5,000,000 / 06/2016	0	0	0	\$0.00000	
Black Photocopier				\$0.00	
KMBS					
	Subtotals Black		1,770,176	\$6,539.10	
	Subtotals Color		112,891	\$6,313.22	

					Date of Last Upgrade: 8/2/2016
Make-Model / Speed					
Serial Number / Vendor ID					
Life / Intro Date					
Vendor	7/1/2017 Meter	6/30/2018 Meter	2017-18 Annual Volume	Cost/Copy Annual Cost	Recommendations
KINGSWOOD REGIONAL MIDDLE					
Cart					
Konica Minolta BH3301P / 35 PPM	1,016	2,060	1,044	\$0.006280	None at this time.
A63P015000153 / 9464 8232				\$6.56	
500,000 / 11/2015	0	0	0	\$0.00000	
Black Network Printer				\$0.00	
KMBS					
IT Staging					
Konica Minolta BH4700P / 50 PPM	0	600	600	\$0.006280	None at this time.
A63N011014863 / 9467 6625				\$3.77	
2,000,000 / 04/2013	0	0	0	\$0.00000	
Black Network Printer				\$0.00	
KMBS					
Main Office					
Konica Minolta BH3320 / 35 PPM	2,243	4,363	2,120	\$0.004100	None at this time.
A6WP011006568 / 9464 8239				\$8.69	
750,000 / 02/2014	0	0	0	\$0.00000	
Black Laser MFP				\$0.00	
KMBS					

Date of Last Upgrade: 8/2/2016					
Make-Model / Speed					
Serial Number / Vendor ID					
Life / Intro Date					
Vendor	7/1/2017 Meter	6/30/2018 Meter	2017-18 Annual Volume	Cost/Copy Annual Cost	Recommendations
KINGSWOOD REGIONAL MIDDLE					
Room 102					
Konica Minolta BHC3100P / 32 PPM	907	1,475	568	\$0.006280	None at this time.
A6DR012105257 / 9467 1649				\$3.57	
750,000 / 06/2014	1,150	1,780	630	\$0.05760	
Color Network Printer				\$36.29	
KMBS					
Konica Minolta BHC3100P / 32 PPM	3,521	6,849	3,328	\$0.006280	None at this time.
A6DR012105260 / 9467 1662				\$20.90	
750,000 / 06/2014	7,872	15,311	7,439	\$0.05760	
Color Network Printer				\$428.49	
KMBS					
Room 103					
Konica Minolta BHC3100P / 32 PPM	1,595	3,160	1,565	\$0.006280	None at this time.
A6DR012105255 / 9467 1665				\$9.83	
750,000 / 06/2014	1,621	3,286	1,665	\$0.05760	
Color Network Printer				\$95.90	
KMBS					
Room 104					
Konica Minolta BHC3100P / 32 PPM	865	2,099	1,234	\$0.006280	None at this time.
A6DR012105274 / 9467 1652				\$7.75	
750,000 / 06/2014	950	1,803	853	\$0.05760	
Color Network Printer				\$49.13	
KMBS					

					Date of Last Upgrade: 8/2/2016
Make-Model / Speed					
Serial Number / Vendor ID					
Life / Intro Date					
Vendor	7/1/2017 Meter	6/30/2018 Meter	2017-18 Annual Volume	Cost/Copy Annual Cost	Recommendations
KINGSWOOD REGIONAL MIDDLE					
Room 105					
Konica Minolta BHC3100P / 32 PPM	185	510	325	\$0.006280	None at this time.
A6DR012105273 / 9467 1666				\$2.04	
750,000 / 06/2014	144	319	175	\$0.05760	
Color Network Printer				\$10.08	
KMBS					
Room 106					
Konica Minolta BH3301P / 35 PPM	1,579	2,184	605	\$0.006280	None at this time.
A63P015000211 / 9464 8255				\$3.80	
500,000 / 11/2015	0	0	0	\$0.00000	
Black Network Printer				\$0.00	
KMBS					
Room 107					
Konica Minolta BHC3100P / 32 PPM	310	751	441	\$0.006280	None at this time.
A6DR012105324 / 9467 1656				\$2.77	
750,000 / 06/2014	207	615	408	\$0.05760	
Color Network Printer				\$23.50	
KMBS					
Room 108					
Konica Minolta BH4700P / 50 PPM	10,887	18,691	7,804	\$0.006280	None at this time.
A63N011014876 / 9467 6594				\$49.01	
2,000,000 / 04/2013	0	0	0	\$0.00000	
Black Network Printer				\$0.00	
KMBS					

<i>Make-Model / Speed</i>	<i>Date of Last Upgrade: 8/2/2016</i>				
<i>Serial Number / Vendor ID</i>					
<i>Life / Intro Date</i>					
<i>Vendor</i>	<i>7/1/2017 Meter</i>	<i>6/30/2018 Meter</i>	<i>2017-18 Annual Volume</i>	<i>Cost/Copy Annual Cost</i>	<i>Recommendations</i>
KINGSWOOD REGIONAL MIDDLE					
Room 111					
Konica Minolta BHC654E / 65 PPM	124,457	285,628	161,171	\$0.003280	None at this time.
A2X1017016661 / 9465 0685				\$528.64	
3,000,000 / 07/2013	54,407	116,969	62,562	\$0.05115	
Color Photocopier				\$3,200.05	
KMBS					
Room 117					
Konica Minolta BHC3100P / 32 PPM	805	1,766	961	\$0.006280	None at this time.
A6DR012105325 / 9467 1653				\$6.04	
750,000 / 06/2014	622	1,650	1,028	\$0.05760	
Color Network Printer				\$59.21	
KMBS					
Room 118 Teachers' Room					
Konica Minolta BH754 / 75 PPM	656,679	776,628	119,949	\$0.004200	None at this time.
A55V011000267 / 9348 4174				\$503.79	
4,000,000 / 03/2013	0	0	0	\$0.00000	
Black Photocopier				\$0.00	
KMBS					
Room 120 - not in use					
Konica Minolta BH3301P / 35 PPM	0	0	0	\$0.006280	None at this time.
A63P015000349 / 9464 8228				\$0.00	
500,000 / 11/2015	0	0	0	\$0.00000	
Black Network Printer				\$0.00	
KMBS					

<i>Make-Model / Speed Serial Number / Vendor ID Life / Intro Date</i>					<i>Date of Last Upgrade: 8/2/2016</i>
<i>Vendor</i>	<i>7/1/2017 Meter</i>	<i>6/30/2018 Meter</i>	<i>2017-18 Annual Volume</i>	<i>Cost/Copy Annual Cost</i>	<i>Recommendations</i>
KINGSWOOD REGIONAL MIDDLE					
Room 121					
Konica Minolta BHC3350 / 35 PPM A4Y4011014059 / 9465 0677 750,000 / 01/2014 Color Laser MFP KMBS	1,723 688	2,935 1,364	1,212 676	\$0.004100 \$4.97 \$0.05760 \$38.94	None at this time.
Room 131					
Konica Minolta BHC3100P / 32 PPM A6DR012105258 / 9467 1629 750,000 / 06/2014 Color Network Printer KMBS	908 771	2,614 1,420	1,706 649	\$0.006280 \$10.71 \$0.05760 \$37.38	None at this time.
Room 133					
Konica Minolta BH3301P / 35 PPM A63P015000354 / 9464 8254 500,000 / 11/2015 Black Network Printer KMBS	1,818 0	4,179 0	2,361 0	\$0.006280 \$14.83 \$0.00000 \$0.00	None at this time.
Room 135					
Konica Minolta BHC3100P / 32 PPM A6DR012105326 / 9467 1651 750,000 / 06/2014 Color Network Printer KMBS	1,015 916	3,252 2,411	2,237 1,495	\$0.006280 \$14.05 \$0.05760 \$86.11	None at this time.

					Date of Last Upgrade: 8/2/2016
Make-Model / Speed					
Serial Number / Vendor ID					
Life / Intro Date					
Vendor	7/1/2017 Meter	6/30/2018 Meter	2017-18 Annual Volume	Cost/Copy Annual Cost	Recommendations
KINGSWOOD REGIONAL MIDDLE					
Room 135 - Little					
Konica Minolta BH3301P / 35 PPM	1,692	3,235	1,543	\$0.006280	None at this time.
A63P015000250 / 9464 8252				\$9.69	
500,000 / 11/2015	0	0	0	\$0.00000	
Black Network Printer				\$0.00	
KMBS					
Room 135 - not in use					
Konica Minolta BH3301P / 35 PPM	0	0	0	\$0.006280	None at this time.
A63P015000229 / 9464 8253				\$0.00	
500,000 / 11/2015	0	0	0	\$0.00000	
Black Network Printer				\$0.00	
KMBS					
Room 136					
Konica Minolta BHC3100P / 32 PPM	1,235	2,406	1,171	\$0.006280	None at this time.
A6DR012105321 / 9467 1650				\$7.35	
750,000 / 06/2014	938	2,325	1,387	\$0.05760	
Color Network Printer				\$79.89	
KMBS					
Room 138					
Konica Minolta BH3301P / 35 PPM	24	603	579	\$0.006280	None at this time.
A63P015000518 / 9464 8251				\$3.64	
500,000 / 11/2015	0	0	0	\$0.00000	
Black Network Printer				\$0.00	
KMBS					

<i>Make-Model / Speed</i>	<i>Date of Last Upgrade: 8/2/2016</i>				
<i>Serial Number / Vendor ID</i>					
<i>Life / Intro Date</i>					
<i>Vendor</i>	<i>7/1/2017 Meter</i>	<i>6/30/2018 Meter</i>	<i>2017-18 Annual Volume</i>	<i>Cost/Copy Annual Cost</i>	<i>Recommendations</i>
KINGSWOOD REGIONAL MIDDLE					
Room 139A					
Konica Minolta BH3301P / 35 PPM	1,358	2,343	985	\$0.006280	None at this time.
A63P015000514 / 9464 8250				\$6.19	
500,000 / 11/2015	0	0	0	\$0.00000	
Black Network Printer				\$0.00	
KMBS					
Room 141					
Konica Minolta BHC3100P / 32 PPM	591	1,111	520	\$0.006280	None at this time.
A6DR012105322 / 9467 1628				\$3.27	
750,000 / 06/2014	360	941	581	\$0.05760	
Color Network Printer				\$33.47	
KMBS					
Room 143C					
Konica Minolta BH3301P / 35 PPM	105	233	128	\$0.006280	Underused!
A63P015000365 / 9467 6595				\$0.80	
500,000 / 11/2015	0	0	0	\$0.00000	
Black Network Printer				\$0.00	
KMBS					
Room 144A					
Konica Minolta BHC3100P / 32 PPM	651	1,503	852	\$0.006280	None at this time.
A6DR012105280 / 9467 1668				\$5.35	
750,000 / 06/2014	1,548	2,663	1,115	\$0.05760	
Color Network Printer				\$64.22	
KMBS					

Date of Last Upgrade: 8/2/2016					
Make-Model / Speed					
Serial Number / Vendor ID					
Life / Intro Date					
Vendor	7/1/2017 Meter	6/30/2018 Meter	2017-18 Annual Volume	Cost/Copy Annual Cost	Recommendations
KINGSWOOD REGIONAL MIDDLE					
Room 153					
Konica Minolta BHC3100P / 32 PPM	1,443	3,603	2,160	\$0.006280	None at this time.
A6DR012105320 / 9467 1627				\$13.56	
750,000 / 06/2014	3,241	7,396	4,155	\$0.05760	
Color Network Printer				\$239.33	
KMBS					
Room 158					
Konica Minolta BH3301P / 35 PPM	2,831	3,159	328	\$0.006280	Underused!
A63P015000275 / 9467 6597				\$2.06	
500,000 / 11/2015	0	0	0	\$0.00000	
Black Network Printer				\$0.00	
KMBS					
Konica Minolta BHC3100P / 32 PPM	344	819	475	\$0.006280	None at this time.
A6DR012105281 / 9467 1667				\$2.98	
750,000 / 06/2014	1,918	3,203	1,285	\$0.05760	
Color Network Printer				\$74.02	
KMBS					
Room 161A					
Konica Minolta BH3301P / 35 PPM	1,553	2,882	1,329	\$0.006280	None at this time.
A63P015000361 / 9464 8247				\$8.35	
500,000 / 11/2015	0	0	0	\$0.00000	
Black Network Printer				\$0.00	
KMBS					

					Date of Last Upgrade: 8/2/2016
Make-Model / Speed					
Serial Number / Vendor ID					
Life / Intro Date			2017-18		
Vendor	7/1/2017 Meter	6/30/2018 Meter	Annual Volume	Cost/Copy Annual Cost	Recommendations
KINGSWOOD REGIONAL MIDDLE					
Room 202					
Konica Minolta BHC3100P / 32 PPM	924	1,889	965	\$0.006280	None at this time.
A6DR012105259 / 9467 1663				\$6.06	
750,000 / 06/2014	1,061	2,003	942	\$0.05760	
Color Network Printer				\$54.26	
KMBS					
Room 203 McEvoy					
Konica Minolta BH3301P / 35 PPM	2,624	6,432	3,808	\$0.006280	None at this time.
A63P015000350 / 9464 8227				\$23.91	
500,000 / 11/2015	0	0	0	\$0.00000	
Black Network Printer				\$0.00	
KMBS					
Room 204					
Konica Minolta BH754 / 75 PPM	693,116	835,151	142,035	\$0.004200	None at this time.
A55V011000913 / 9348 4125				\$596.55	
4,000,000 / 03/2013	0	0	0	\$0.00000	
Black Photocopier				\$0.00	
KMBS					
Room 214					
Konica Minolta BH3301P / 35 PPM	953	2,740	1,787	\$0.006280	None at this time.
A63P015000519 / 9464 8246				\$11.22	
500,000 / 11/2015	0	0	0	\$0.00000	
Black Network Printer				\$0.00	
KMBS					

<i>Make-Model / Speed</i> <i>Serial Number / Vendor ID</i> <i>Life / Intro Date</i> <i>Vendor</i>					<i>Date of Last Upgrade: 8/2/2016</i> <i>Recommendations</i>	
	<i>7/1/2017</i> <i>Meter</i>	<i>6/30/2018</i> <i>Meter</i>	<i>2017-18</i> <i>Annual</i> <i>Volume</i>	<i>Cost/Copy</i> <i>Annual Cost</i>		
KINGSWOOD REGIONAL MIDDLE						
Room 215 Pike						
Konica Minolta BH3301P / 35 PPM A63P015000344 / 9464 8245 500,000 / 11/2015 Black Network Printer KMBS	3,212 0	6,530 0	3,318 0	\$0.006280 \$20.84 \$0.00000 \$0.00	None at this time.	
Room 217						
Konica Minolta BHC3100P / 32 PPM A6DR012105309 / 9467 1659 750,000 / 06/2014 Color Network Printer KMBS	1,064 1,062	2,942 2,349	1,878 1,287	\$0.006280 \$11.79 \$0.05760 \$74.13	None at this time.	
Room 218						
Konica Minolta BH3301P / 35 PPM A63P015000500 / 9464 8244 500,000 / 11/2015 Black Network Printer KMBS	3,838 0	7,426 0	3,588 0	\$0.006280 \$22.53 \$0.00000 \$0.00	None at this time.	
Room 219						
Konica Minolta BHC3100P / 32 PPM A6DR012105312 / 9467 1655 750,000 / 06/2014 Color Network Printer KMBS	459 537	1,150 1,149	691 612	\$0.006280 \$4.34 \$0.05760 \$35.25	None at this time.	

					Date of Last Upgrade: 8/2/2016
Make-Model / Speed					
Serial Number / Vendor ID					
Life / Intro Date			2017-18		
Vendor	7/1/2017 Meter	6/30/2018 Meter	Annual Volume	Cost/Copy Annual Cost	Recommendations
KINGSWOOD REGIONAL MIDDLE					
Room 221					
Konica Minolta BH3301P / 35 PPM	1,027	2,187	1,160	\$0.006280	None at this time.
A63P015000501 / 9342 4913				\$7.28	
500,000 / 11/2015	0	0	0	\$0.00000	
Black Network Printer				\$0.00	
KMBS					
Room 222					
Konica Minolta BH3301P / 35 PPM	1,243	3,105	1,862	\$0.006280	None at this time.
A63P015000507 / 9464 8242				\$11.69	
500,000 / 11/2015	0	0	0	\$0.00000	
Black Network Printer				\$0.00	
KMBS					
Room 224 Warren					
Konica Minolta BH3301P / 35 PPM	2,352	6,052	3,700	\$0.006280	None at this time.
A63P015000242 / 9342 4922				\$23.24	
500,000 / 11/2015	0	0	0	\$0.00000	
Black Network Printer				\$0.00	
KMBS					
Room 225					
Konica Minolta BH3301P / 35 PPM	1,008	2,543	1,535	\$0.006280	None at this time.
A63P015000146 / 9342 4914				\$9.64	
500,000 / 11/2015	0	0	0	\$0.00000	
Black Network Printer				\$0.00	
KMBS					

					Date of Last Upgrade: 8/2/2016
Make-Model / Speed					
Serial Number / Vendor ID					
Life / Intro Date					
Vendor	7/1/2017 Meter	6/30/2018 Meter	2017-18 Annual Volume	Cost/Copy Annual Cost	Recommendations
KINGSWOOD REGIONAL MIDDLE					
Room 226					
Konica Minolta BH3301P / 35 PPM	3,687	6,127	2,440	\$0.006280	None at this time.
A63P015000251 / 9342 4915				\$15.32	
500,000 / 11/2015	0	0	0	\$0.00000	
Black Network Printer				\$0.00	
KMBS					
Room 227					
Konica Minolta BH3301P / 35 PPM	11	3,673	3,662	\$0.006280	None at this time.
A63P015000158 / 9464 8236				\$23.00	
500,000 / 11/2015	0	0	0	\$0.00000	
Black Network Printer				\$0.00	
KMBS					
Room 229 Prep					
Konica Minolta BH958 / 95 PPM	209,915	466,240	256,325	\$0.003280	None at this time.
A796011000302 / 9464 6646				\$840.75	
5,000,000 / 06/2016	0	0	0	\$0.00000	
Black Photocopier				\$0.00	
KMBS					
Room 230					
Konica Minolta BH3301P / 35 PPM	1,565	3,501	1,936	\$0.006280	None at this time.
A63P015000249 / 9464 8235				\$12.16	
500,000 / 11/2015	0	0	0	\$0.00000	
Black Network Printer				\$0.00	
KMBS					

					Date of Last Upgrade: 8/2/2016
Make-Model / Speed					
Serial Number / Vendor ID					
Life / Intro Date			2017-18		
Vendor	7/1/2017 Meter	6/30/2018 Meter	Annual Volume	Cost/Copy Annual Cost	Recommendations
KINGSWOOD REGIONAL MIDDLE					
Room 231					
Konica Minolta BHC3100P / 32 PPM	939	2,680	1,741	\$0.006280	None at this time.
A6DR012105231 / 9467 1664				\$10.93	
750,000 / 06/2014	1,194	3,730	2,536	\$0.05760	
Color Network Printer				\$146.07	
KMBS					
Room 232					
Konica Minolta BH3301P / 35 PPM	999	2,462	1,463	\$0.006280	None at this time.
A63P015000150 / 9464 8234				\$9.19	
500,000 / 11/2015	0	0	0	\$0.00000	
Black Network Printer				\$0.00	
KMBS					
Room 233					
Konica Minolta BHC3100P / 32 PPM	449	1,283	834	\$0.006280	None at this time.
A6DR012105262 / 9467 1658				\$5.24	
750,000 / 06/2014	603	1,919	1,316	\$0.05760	
Color Network Printer				\$75.80	
KMBS					
Room 235					
Konica Minolta BH3301P / 35 PPM	2,005	3,749	1,744	\$0.006280	None at this time.
A63P015000163 / 9467 6629				\$10.95	
500,000 / 11/2015	0	0	0	\$0.00000	
Black Network Printer				\$0.00	
KMBS					

<i>Make-Model / Speed Serial Number / Vendor ID Life / Intro Date</i>					<i>Date of Last Upgrade: 8/2/2016</i>
<i>Vendor</i>	<i>7/1/2017 Meter</i>	<i>6/30/2018 Meter</i>	<i>2017-18 Annual Volume</i>	<i>Cost/Copy Annual Cost</i>	<i>Recommendations</i>
KINGSWOOD REGIONAL MIDDLE					
Room 236					
Konica Minolta BHC3100P / 32 PPM	1,426	3,506	2,080	\$0.006280	None at this time.
A6DR012105278 /				\$13.06	
750,000 / 06/2014	1,191	3,742	2,551	\$0.05760	
Color Network Printer				\$146.94	
KMBS					
Room 236 Lenovo Cart 2					
Konica Minolta BH3301P / 35 PPM	431	431	0	\$0.006280	Underused!
A63P015000139 / 9464 8256				\$0.00	
500,000 / 11/2015	0	0	0	\$0.00000	
Black Network Printer				\$0.00	
KMBS					
Room 243					
Konica Minolta BH3301P / 35 PPM	2,900	6,162	3,262	\$0.006280	None at this time.
A63P015000243 / 9464 6630				\$20.49	
500,000 / 11/2015	0	0	0	\$0.00000	
Black Network Printer				\$0.00	
KMBS					
Room 244					
Konica Minolta BHC3100P / 32 PPM	1,189	2,810	1,621	\$0.006280	None at this time.
A6DR012105245 / 9467 1657				\$10.18	
750,000 / 06/2014	1,410	3,883	2,473	\$0.05760	
Color Network Printer				\$142.44	
KMBS					

<i>Make-Model / Speed</i>	<i>Date of Last Upgrade: 8/2/2016</i>				
<i>Serial Number / Vendor ID</i>			<i>2017-18</i>		
<i>Life / Intro Date</i>	<i>7/1/2017</i>	<i>6/30/2018</i>	<i>Annual</i>	<i>Cost/Copy</i>	
<i>Vendor</i>	<i>Meter</i>	<i>Meter</i>	<i>Volume</i>	<i>Annual Cost</i>	<i>Recommendations</i>
KINGSWOOD REGIONAL MIDDLE					
Room 245					
Konica Minolta BHC3100P / 32 PPM	684	1,112	428	\$0.006280	None at this time.
A6DR012105285 / 9467 1654				\$2.69	
750,000 / 06/2014	1,285	2,622	1,337	\$0.05760	
Color Network Printer				\$77.01	
KMBS					
Room 246					
Konica Minolta BH3301P / 35 PPM	968	4,654	3,686	\$0.006280	None at this time.
A63P015000151 / 9467 8228				\$23.15	
500,000 / 11/2015	0	0	0	\$0.00000	
Black Network Printer				\$0.00	
KMBS					
Konica Minolta BH3301P / 35 PPM	1,180	2,460	1,280	\$0.006280	None at this time.
A63P015000247 /				\$8.04	
500,000 / 11/2015	0	0	0	\$0.00000	
Black Network Printer				\$0.00	
KMBS					
Room 247					
Konica Minolta BH3301P / 35 PPM	2,595	2,727	132	\$0.006280	Underused!
A63P015000248 / 9464 6628				\$0.83	
500,000 / 11/2015	0	0	0	\$0.00000	
Black Network Printer				\$0.00	
KMBS					

					Date of Last Upgrade: 8/2/2016
Make-Model / Speed					
Serial Number / Vendor ID					
Life / Intro Date					
Vendor	7/1/2017 Meter	6/30/2018 Meter	2017-18 Annual Volume	Cost/Copy Annual Cost	Recommendations
KINGSWOOD REGIONAL MIDDLE					
Room 249 Quinney					
Konica Minolta BH3301P / 35 PPM	1,360	3,987	2,627	\$0.006280	None at this time.
A63P015000237 /				\$16.50	
500,000 / 11/2015	0	0	0	\$0.00000	
Black Network Printer				\$0.00	
KMBS					
Room 255 - not in use					
Konica Minolta BH3301P / 35 PPM	0	0	0	\$0.006280	None at this time.
A63P015000327 / 9464 6631				\$0.00	
500,000 / 11/2015	0	0	0	\$0.00000	
Black Network Printer				\$0.00	
KMBS					
Room 257					
Konica Minolta BHC3100P / 32 PPM	2,422	4,171	1,749	\$0.006280	None at this time.
A6DR012105277 / 9467 1661				\$10.98	
750,000 / 06/2014	5,694	9,612	3,918	\$0.05760	
Color Network Printer				\$225.68	
KMBS					
Subtotals Black			772,638	\$3,047.49	
Subtotals Color			103,075	\$5,533.60	

<i>Make-Model / Speed</i>	<i>Date of Last Upgrade: 8/2/2016</i>				
<i>Serial Number / Vendor ID</i>					
<i>Life / Intro Date</i>					
<i>Vendor</i>	<i>7/1/2017 Meter</i>	<i>6/30/2018 Meter</i>	<i>2017-18 Annual Volume</i>	<i>Cost/Copy Annual Cost</i>	<i>Recommendations</i>
LAKES REGION TECHNICAL CENTER					
<i>Culinary Office</i>					
Konica Minolta BHC3100P / 32 PPM	1,621	3,822	2,201	\$0.006280	None at this time.
A6DR012105279 / 9467 1648				\$13.82	
750,000 / 06/2014	210	730	520	\$0.05760	
Color Network Printer				\$29.95	
KMBS					
<i>Main Office</i>					
Konica Minolta BHC3100P / 32 PPM	2,441	6,375	3,934	\$0.006280	None at this time.
A6DR012105244 / 9467 1644				\$24.71	
750,000 / 06/2014	3,232	7,784	4,552	\$0.05760	
Color Network Printer				\$262.20	
KMBS					
Konica Minolta BHC458 / 45 PPM	88,600	176,092	87,492	\$0.003280	None at this time.
A79M011000395 / 9467 6513				\$286.97	
1,000,000 / 08/2016	68,158	131,489	63,331	\$0.05115	
Color Photocopier				\$3,239.38	
KMBS					
<i>Room 102D</i>					
Konica Minolta BH3301P / 35 PPM	265	730	465	\$0.006280	Underused!
A63P015000537 / 9467 6599				\$2.92	
500,000 / 11/2015	0	0	0	\$0.00000	
Black Network Printer				\$0.00	
KMBS					

<i>Make-Model / Speed</i>	<i>Date of Last Upgrade: 8/2/2016</i>				
<i>Serial Number / Vendor ID</i>					
<i>Life / Intro Date</i>					
<i>Vendor</i>	<i>7/1/2017 Meter</i>	<i>6/30/2018 Meter</i>	<i>2017-18 Annual Volume</i>	<i>Cost/Copy Annual Cost</i>	<i>Recommendations</i>
LAKES REGION TECHNICAL CENTER					
Room 104					
Konica Minolta BHC3100P / 32 PPM	3,405	8,141	4,736	\$0.006280	None at this time.
A6DR012105399 / 9467 1646				\$29.74	
750,000 / 06/2014	2,488	6,572	4,084	\$0.05760	
Color Network Printer				\$235.24	
KMBS					
Room 108					
Konica Minolta BHC3100P / 32 PPM	5,410	13,453	8,043	\$0.006280	None at this time.
A6DR012105351 / 9467 1630				\$50.51	
750,000 / 06/2014	4,904	11,345	6,441	\$0.05760	
Color Network Printer				\$371.00	
KMBS					
Room 112					
Konica Minolta BHC3100P / 32 PPM	1,247	2,799	1,552	\$0.006280	None at this time.
A6DR012105408 / 9467 1645				\$9.75	
750,000 / 06/2014	2,302	5,781	3,479	\$0.05760	
Color Network Printer				\$200.39	
KMBS					
Room 117 Business Office					
Konica Minolta BH454E / 45 PPM	13,406	30,156	16,750	\$0.003280	None at this time.
A61E011025092 / 9467 6522				\$54.94	
1,000,000 / 11/2013	0	0	0	\$0.00000	
Black Photocopier				\$0.00	
KMBS					

<i>Make-Model / Speed</i>	<i>Date of Last Upgrade: 8/2/2016</i>				
<i>Serial Number / Vendor ID</i>					
<i>Life / Intro Date</i>					
<i>Vendor</i>	<i>7/1/2017 Meter</i>	<i>6/30/2018 Meter</i>	<i>2017-18 Annual Volume</i>	<i>Cost/Copy Annual Cost</i>	<i>Recommendations</i>
LAKES REGION TECHNICAL CENTER					
Room 118					
Konica Minolta BH3301P / 35 PPM	641	714	73	\$0.006280	Underused!
A63P015000188 / 9467 6600				\$0.46	
500,000 / 11/2015	0	0	0	\$0.00000	
Black Network Printer				\$0.00	
KMBS					
Konica Minolta BH3301P / 35 PPM	2,598	7,145	4,547	\$0.006280	None at this time.
A63P015000493 / 9467 6601				\$28.56	
500,000 / 11/2015	0	0	0	\$0.00000	
Black Network Printer				\$0.00	
KMBS					
Room 120 Business Office					
Konica Minolta BHC454 / 45 PPM	362,352	376,171	13,819	\$0.003280	None at this time.
A5C0011000536 / 9348 4164				\$45.33	
1,000,000 / 07/2012	76,896	79,172	2,276	\$0.05399	
Color Photocopier				\$122.88	
KMBS					
Room 121A					
Konica Minolta BHC3100P / 32 PPM	530	1,138	608	\$0.006280	None at this time.
A6DR012105352 / 9467 1647				\$3.82	
750,000 / 06/2014	1,550	3,862	2,312	\$0.05760	
Color Network Printer				\$133.17	
KMBS					

<i>Make-Model / Speed</i>	<i>Date of Last Upgrade: 8/2/2016</i>				
<i>Serial Number / Vendor ID</i>					
<i>Life / Intro Date</i>					
<i>Vendor</i>	<i>7/1/2017 Meter</i>	<i>6/30/2018 Meter</i>	<i>2017-18 Annual Volume</i>	<i>Cost/Copy Annual Cost</i>	<i>Recommendations</i>
LAKES REGION TECHNICAL CENTER					
Room 122					
Konica Minolta BH3320 / 35 PPM	1,091	2,501	1,410	\$0.004100	None at this time.
A6WP011006366 / 9465 0692				\$5.78	
750,000 / 02/2014	0	0	0	\$0.00000	
Black Laser MFP				\$0.00	
KMBS					
Room 122A					
Konica Minolta BH3320 / 35 PPM	2,594	7,274	4,680	\$0.004100	None at this time.
A6WP011006305 / 9467 6605				\$19.19	
750,000 / 02/2014	0	0	0	\$0.00000	
Black Laser MFP				\$0.00	
KMBS					
Room 123					
Konica Minolta BH3301P / 35 PPM	101	710	609	\$0.006280	None at this time.
A63P015000520 / 9467 6602				\$3.82	
500,000 / 11/2015	0	0	0	\$0.00000	
Black Network Printer				\$0.00	
KMBS					
Room 126D Construction					
Konica Minolta BHC3100P / 32 PPM	194	258	64	\$0.006280	Underused!
A6DR012105413 / 9467 1642				\$0.40	
750,000 / 06/2014	956	1,148	192	\$0.05760	
Color Network Printer				\$11.06	
KMBS					

Make-Model / Speed Serial Number / Vendor ID Life / Intro Date					Date of Last Upgrade: 8/2/2016	
Vendor	7/1/2017 Meter	6/30/2018 Meter	2017-18 Annual Volume	Cost/Copy Annual Cost	Recommendations	
LAKES REGION TECHNICAL CENTER						
Room 128A						
Konica Minolta BHC3100P / 32 PPM A6DR012105272 / 9467 1643 750,000 / 06/2014 Color Network Printer	660 769	1,927 2,357	1,267 1,588	\$0.006280 \$7.96 \$0.05760 \$91.47	None at this time.	
KMBS						
Room 306 Agricultural Sciences						
Konica Minolta BHC3350 / 35 PPM A4Y4011014178 / 9467 6510 750,000 / 01/2014 Color Laser MFP	4,942 2,834	9,859 7,845	4,917 5,011	\$0.004100 \$20.16 \$0.05760 \$288.63		None at this time.
KMBS						
Subtotals Black			157,167	\$608.83		
Subtotals Color			93,786	\$4,985.37		

<i>Make-Model / Speed</i>	<i>Date of Last Upgrade: 8/2/2016</i>				
<i>Serial Number / Vendor ID</i>					
<i>Life / Intro Date</i>					
<i>Vendor</i>	<i>7/1/2017 Meter</i>	<i>6/30/2018 Meter</i>	<i>2017-18 Annual Volume</i>	<i>Cost/Copy Annual Cost</i>	<i>Recommendations</i>
MIDDLETON ELEMENTARY					
Main Office					
Konica Minolta BH3301P / 35 PPM	0	8,577	8,577	\$0.006280	None at this time.
A63P015000239 / 9348 5955				\$53.86	
500,000 / 11/2015	0	0	0	\$0.00000	
Black Network Printer				\$0.00	
KMBS					
Konica Minolta BHC654 / 65 PPM	123,169	221,239	98,070	\$0.003280	None at this time.
A2X1017017792 / 9465 0682				\$321.67	
3,000,000 / 02/2012	35,262	69,249	33,987	\$0.05115	
Color Photocopier				\$1,738.44	
KMBS					
Media Center					
Konica Minolta BHC3100P / 32 PPM	718	765	47	\$0.006280	None at this time.
A6DR012105350 / 9467 1564				\$0.30	
750,000 / 06/2014	0	1,611	1,611	\$0.05760	
Color Network Printer				\$92.79	
KMBS					
Principal's Office - not in use					
Konica Minolta BHC3100P / 32 PPM	0	0	0	\$0.006280	Traded
A6DR012105353 / 9467 1598				\$0.00	
750,000 / 06/2014	0	0	0	\$0.05760	
Color Network Printer				\$0.00	
KMBS					

<i>Make-Model / Speed</i>	<i>Date of Last Upgrade: 8/2/2016</i>				
<i>Serial Number / Vendor ID</i>					
<i>Life / Intro Date</i>					
<i>Vendor</i>	<i>7/1/2017 Meter</i>	<i>6/30/2018 Meter</i>	<i>2017-18 Annual Volume</i>	<i>Cost/Copy Annual Cost</i>	<i>Recommendations</i>
MIDDLETON ELEMENTARY					
Room 116 Nurse					
Konica Minolta BH3301P / 35 PPM	810	1,414	604	\$0.006280	None at this time.
A63P015000222 / 9230 1059				\$3.79	
500,000 / 11/2015	0	0	0	\$0.00000	
Black Network Printer				\$0.00	
KMBS					
Room 117 Guidance Office					
Konica Minolta BH3301P / 35 PPM	1,243	2,228	985	\$0.006280	None at this time.
A63P015000240 / 9320 1048				\$6.19	
500,000 / 11/2015	0	0	0	\$0.00000	
Black Network Printer				\$0.00	
KMBS					
Room 119 Art					
Konica Minolta BHC3100P / 32 PPM	239	632	393	\$0.006280	None at this time.
A6DR012105356 / 9467 1599				\$2.47	
750,000 / 06/2014	303	1,033	730	\$0.05760	
Color Network Printer				\$42.05	
KMBS					
Room 122 K/Pre-K - not in use					
Konica Minolta BHC3100P / 32 PPM	0	0	0	\$0.006280	Traded
A6DR012105337 / 9467 1565				\$0.00	
750,000 / 06/2014	0	0	0	\$0.05760	
Color Network Printer				\$0.00	
KMBS					

<i>Make-Model / Speed</i>	<i>Date of Last Upgrade: 8/2/2016</i>				
<i>Serial Number / Vendor ID</i>					
<i>Life / Intro Date</i>					
<i>Vendor</i>	<i>7/1/2017 Meter</i>	<i>6/30/2018 Meter</i>	<i>2017-18 Annual Volume</i>	<i>Cost/Copy Annual Cost</i>	<i>Recommendations</i>
MIDDLETON ELEMENTARY					
Room 126 - not in use					
Konica Minolta BHC3100P / 32 PPM	0	0	0	\$0.006280	Traded
A6DR012105359 / 9467 1563				\$0.00	
750,000 / 06/2014	0	0	0	\$0.05760	
Color Network Printer				\$0.00	
KMBS					
Room 128 - not in use					
Konica Minolta BHC3100P / 32 PPM	0	0	0	\$0.006280	Traded
A6DR012105335 / 9467 1562				\$0.00	
750,000 / 06/2014	0	0	0	\$0.05760	
Color Network Printer				\$0.00	
KMBS					
Room 133 - not in use					
Konica Minolta BHC3100P / 32 PPM	0	0	0	\$0.006280	Traded
A6DR012105360 / 9467 1600				\$0.00	
750,000 / 06/2014	0	0	0	\$0.05760	
Color Network Printer				\$0.00	
KMBS					
Special Education					
Konica Minolta BH3301P / 35 PPM	5,019	8,349	3,330	\$0.006280	None at this time.
A63P015000144 / 9320 1049				\$20.91	
500,000 / 11/2015	0	0	0	\$0.00000	
Black Network Printer				\$0.00	
KMBS					

<i>Make-Model / Speed</i>	<i>Date of Last Upgrade: 8/2/2016</i>				
<i>Serial Number / Vendor ID</i>					
<i>Life / Intro Date</i>					
<i>Vendor</i>	<i>7/1/2017 Meter</i>	<i>6/30/2018 Meter</i>	<i>2017-18 Annual Volume</i>	<i>Cost/Copy Annual Cost</i>	<i>Recommendations</i>
MIDDLETON ELEMENTARY					
<i>Teachers' Work Room</i>					
Konica Minolta BH958 / 95 PPM	155,879	294,435	138,556	\$0.003280	None at this time.
A796011000346 / 9465 0704				\$454.46	
5,000,000 / 06/2016	0	0	0	\$0.00000	
Black Photocopier				\$0.00	
KMBS					
	<i>Subtotals Black</i>		250,562	\$863.65	
	<i>Subtotals Color</i>		36,328	\$1,873.28	

<i>Make-Model / Speed</i>	<i>Date of Last Upgrade: 8/2/2016</i>				
<i>Serial Number / Vendor ID</i>					
<i>Life / Intro Date</i>					
<i>Vendor</i>	<i>7/1/2017 Meter</i>	<i>6/30/2018 Meter</i>	<i>2017-18 Annual Volume</i>	<i>Cost/Copy Annual Cost</i>	<i>Recommendations</i>
NEW DURHAM ELEMENTARY					
Main Office					
Konica Minolta BHC654E / 65 PPM	170,730	349,507	178,777	\$0.003280	None at this time.
A2X1017017783 / 9467 6517				\$586.39	
3,000,000 / 07/2013	74,596	151,266	76,670	\$0.05115	
Color Photocopier				\$3,921.67	
KMBS					
Room 102					
Konica Minolta BH3320 / 35 PPM	3,122	6,820	3,698	\$0.004100	None at this time.
A6WP011006563 / 9348 5953				\$15.16	
750,000 / 02/2014	0	0	0	\$0.00000	
Black Laser MFP				\$0.00	
KMBS					
Room 102 Computer Lab					
Konica Minolta BHC3100P / 32 PPM	924	1,993	1,069	\$0.006280	None at this time.
A6DR012105395 / 9467 1593				\$6.71	
750,000 / 06/2014	2,722	6,095	3,373	\$0.05760	
Color Network Printer				\$194.28	
KMBS					
Room 115 Preschool					
Konica Minolta BHC3100P / 32 PPM	801	1,507	706	\$0.006280	None at this time.
A6DR012105318 / 9467 1596				\$4.43	
750,000 / 06/2014	1,261	2,296	1,035	\$0.05760	
Color Network Printer				\$59.62	
KMBS					

<i>Make-Model / Speed</i>	<i>Date of Last Upgrade: 8/2/2016</i>				
<i>Serial Number / Vendor ID</i>					
<i>Life / Intro Date</i>					
<i>Vendor</i>	<i>7/1/2017 Meter</i>	<i>6/30/2018 Meter</i>	<i>2017-18 Annual Volume</i>	<i>Cost/Copy Annual Cost</i>	<i>Recommendations</i>
NEW DURHAM ELEMENTARY					
Room 123					
Konica Minolta BH754 / 75 PPM	939,950	1,045,885	105,935	\$0.004200	None at this time.
A55V011000915 / 9348 4161				\$444.93	
4,000,000 / 03/2013	0	0	0	\$0.00000	
Black Photocopier				\$0.00	
KMBS					
Room 134					
Konica Minolta BH3301P / 35 PPM	1,262	2,115	853	\$0.006280	None at this time.
A63P015000204 / 9320 1058				\$5.36	
500,000 / 11/2015	0	0	0	\$0.00000	
Black Network Printer				\$0.00	
KMBS					
Konica Minolta BH3301P / 35 PPM	1,915	3,799	1,884	\$0.006280	None at this time.
A63P015000157 / 9348 5556				\$11.83	
500,000 / 11/2015	0	0	0	\$0.00000	
Black Network Printer				\$0.00	
KMBS					
Room 145					
Konica Minolta BH3301P / 35 PPM	298	1,113	815	\$0.006280	None at this time.
A63P015000201 / 9465 0694				\$5.12	
500,000 / 11/2015	0	0	0	\$0.00000	
Black Network Printer				\$0.00	
KMBS					

					Date of Last Upgrade: 8/2/2016
Make-Model / Speed					
Serial Number / Vendor ID					
Life / Intro Date					
Vendor	7/1/2017 Meter	6/30/2018 Meter	2017-18 Annual Volume	Cost/Copy Annual Cost	Recommendations
NEW DURHAM ELEMENTARY					
Room 149					
Konica Minolta BH3301P / 35 PPM	3,383	7,054	3,671	\$0.006280	None at this time.
A63P015000181 / 9302 1050				\$23.05	
500,000 / 11/2015	0	0	0	\$0.00000	
Black Network Printer				\$0.00	
KMBS					
Room 171 - not in use					
Konica Minolta BH3320 / 35 PPM	0	0	0	\$0.004100	None at this time.
A6WP011006531 / 9465 0696				\$0.00	
750,000 / 02/2014	0	0	0	\$0.00000	
Black Laser MFP				\$0.00	
KMBS					
Room 175 Speech					
Konica Minolta BHC3100P / 32 PPM	1,101	2,324	1,223	\$0.006280	None at this time.
A6DR012105379 / 9467 1597				\$7.68	
750,000 / 06/2014	75	80	5	\$0.05760	
Color Network Printer				\$0.29	
KMBS					
Room 177					
Konica Minolta BH3320 / 35 PPM	10,584	26,389	15,805	\$0.004100	None at this time.
A6WP011006541 / 9465 0697				\$64.80	
750,000 / 02/2014	0	0	0	\$0.00000	
Black Laser MFP				\$0.00	
KMBS					

Make-Model / Speed Serial Number / Vendor ID Life / Intro Date					Date of Last Upgrade: 8/2/2016	
Vendor	7/1/2017 Meter	6/30/2018 Meter	2017-18 Annual Volume	Cost/Copy Annual Cost	Recommendations	
NEW DURHAM ELEMENTARY						
Room 192 Nurse						
Konica Minolta BHC3100P / 32 PPM A6DR012105373 / 9467 1592 750,000 / 06/2014 Color Network Printer KMBS	267	981	714	\$0.006280 \$4.48	None at this time.	
	377	1,263	886	\$0.05760		
				\$51.03		
Room 193 Randall						
Konica Minolta BHC3100P / 32 PPM A6DR012105380 / 9467 1594 750,000 / 06/2014 Color Network Printer KMBS	1,094	1,999	905	\$0.006280 \$5.68	None at this time.	
	1,983	3,375	1,392	\$0.05760		
				\$80.18		
Subtotals Black			316,055	\$1,185.63		
Subtotals Color			83,361	\$4,307.07		

<i>Make-Model / Speed Serial Number / Vendor ID Life / Intro Date</i>					<i>Date of Last Upgrade: 8/2/2016</i>
<i>Vendor</i>	<i>7/1/2017 Meter</i>	<i>6/30/2018 Meter</i>	<i>2017-18 Annual Volume</i>	<i>Cost/Copy Annual Cost</i>	<i>Recommendations</i>
OSSIPEE CENTRAL					
Main Office					
Konica Minolta BH3301P / 35 PPM A63P015000225 / 9467 6568 500,000 / 11/2015 Black Network Printer	4,569 0	9,483 0	4,914 0	\$0.006280 \$30.86 \$0.00000 \$0.00	None at this time.
KMBS					
Konica Minolta BH4700P / 50 PPM A63N011014869 / 9467 6567 2,000,000 / 04/2013 Black Network Printer	1,574 0	5,120 0	3,546 0	\$0.006280 \$22.27 \$0.00000 \$0.00	None at this time.
KMBS					
Konica Minolta BHC654E / 65 PPM A2X1017017736 / 9467 0684 3,000,000 / 07/2013 Color Photocopier	188,432 37,224	373,447 87,860	185,015 50,636	\$0.003280 \$606.85 \$0.05115 \$2,590.03	None at this time.
KMBS					
Room 104 Vice Principal					
Konica Minolta BH3301P / 35 PPM A63P015000202 / 9467 6566 500,000 / 11/2015 Black Network Printer	1,303 0	2,695 0	1,392 0	\$0.006280 \$8.74 \$0.00000 \$0.00	None at this time.
KMBS					

<i>Make-Model / Speed</i>	<i>Date of Last Upgrade: 8/2/2016</i>				
<i>Serial Number / Vendor ID</i>					
<i>Life / Intro Date</i>					
<i>Vendor</i>	<i>7/1/2017 Meter</i>	<i>6/30/2018 Meter</i>	<i>2017-18 Annual Volume</i>	<i>Cost/Copy Annual Cost</i>	<i>Recommendations</i>
OSSIPEE CENTRAL					
Room 105 Principal					
Konica Minolta BHC3100P / 32 PPM	737	1,127	390	\$0.006280	None at this time.
A6DR012105425 / 9467 1574				\$2.45	
750,000 / 06/2014	1,831	2,756	925	\$0.05760	
Color Network Printer				\$53.28	
KMBS					
Room 108 Library					
Konica Minolta BHC3100P / 32 PPM	6,412	12,898	6,486	\$0.006280	None at this time.
A6DR012105384 / 9467 1578				\$40.73	
750,000 / 06/2014	10,918	24,030	13,112	\$0.05760	
Color Network Printer				\$755.25	
KMBS					
Room 109 SPED					
Konica Minolta BHC3100P / 32 PPM	7,830	17,099	9,269	\$0.006280	None at this time.
A6DR012105416 / 9467 1580				\$58.21	
750,000 / 06/2014	641	1,914	1,273	\$0.05760	
Color Network Printer				\$73.32	
KMBS					
Room 110					
Konica Minolta BH3301P / 35 PPM	757	1,262	505	\$0.006280	None at this time.
A63P015000198 / 9467 6565				\$3.17	
500,000 / 11/2015	0	0	0	\$0.00000	
Black Network Printer				\$0.00	
KMBS					

<i>Make-Model / Speed Serial Number / Vendor ID Life / Intro Date</i>					<i>Date of Last Upgrade: 8/2/2016</i>
<i>Vendor</i>	<i>7/1/2017 Meter</i>	<i>6/30/2018 Meter</i>	<i>2017-18 Annual Volume</i>	<i>Cost/Copy Annual Cost</i>	<i>Recommendations</i>
OSSIPEE CENTRAL					
Room 116					
Konica Minolta BHC3100P / 32 PPM A6DR012105415 / 9467 1572 750,000 / 06/2014 Color Network Printer KMBS	917 1,006	2,639 2,389	1,722 1,383	\$0.006280 \$10.81 \$0.05760 \$79.66	None at this time.
Room 119 Kelly					
Konica Minolta BH3301P / 35 PPM A63P015000199 / 500,000 / 11/2015 Black Network Printer KMBS	1,260 0	4,175 0	2,915 0	\$0.006280 \$18.31 \$0.00000 \$0.00	None at this time.
Room 135 SPED					
Konica Minolta BHC3100P / 32 PPM A6DR012105388 / 9467 1576 750,000 / 06/2014 Color Network Printer KMBS	6,490 195	14,803 555	8,313 360	\$0.006280 \$52.21 \$0.05760 \$20.74	None at this time.
Room 147					
Konica Minolta BH3301P / 35 PPM A63P015000195 / 9467 6563 500,000 / 11/2015 Black Network Printer KMBS	2,155 0	5,284 0	3,129 0	\$0.006280 \$19.65 \$0.00000 \$0.00	None at this time.

Make-Model / Speed				Date of Last Upgrade: 8/2/2016	
Serial Number / Vendor ID					
Life / Intro Date	7/1/2017	6/30/2018	2017-18		
Vendor	Meter	Meter	Annual Volume	Cost/Copy Annual Cost	Recommendations
OSSIPEE CENTRAL					
Room 150 Reading Room					
Konica Minolta BHC3100P / 32 PPM	1,672	5,619	3,947	\$0.006280	None at this time.
A6DR012105427 / 9467 1573				\$24.79	
750,000 / 06/2014	2,944	7,500	4,556	\$0.05760	
Color Network Printer				\$262.43	
KMBS					
Room 156 Kitchen Office					
Konica Minolta BH3301P / 35 PPM	1,723	5,274	3,551	\$0.006280	None at this time.
A63P015000189 / 9467 6562				\$22.30	
500,000 / 11/2015	0	0	0	\$0.00000	
Black Network Printer				\$0.00	
KMBS					
Room 160 Speech					
Konica Minolta BHC3100P / 32 PPM	741	1,571	830	\$0.006280	None at this time.
A6DR012105414 / 9467 1577				\$5.21	
750,000 / 06/2014	452	904	452	\$0.05760	
Color Network Printer				\$26.04	
KMBS					
Room 167 Nurse's Office					
Konica Minolta BH3301P / 35 PPM	664	1,774	1,110	\$0.006280	None at this time.
A63P015000193 / 9467 6561				\$6.97	
500,000 / 11/2015	0	0	0	\$0.00000	
Black Network Printer				\$0.00	
KMBS					

Date of Last Upgrade: 8/2/2016					
Make-Model / Speed					
Serial Number / Vendor ID					
Life / Intro Date					
Vendor	7/1/2017 Meter	6/30/2018 Meter	2017-18 Annual Volume	Cost/Copy Annual Cost	Recommendations
OSSIPEE CENTRAL					
Room 174 Guidance					
Konica Minolta BHC3100P / 32 PPM	565	1,644	1,079	\$0.006280	None at this time.
A6DR012105421 / 9467 1571				\$6.78	
750,000 / 06/2014	1,226	2,685	1,459	\$0.05760	
Color Network Printer				\$84.04	
KMBS					
Room 177 Mason					
Konica Minolta BHC3100P / 32 PPM	241	2,623	2,382	\$0.006280	None at this time.
A6DR012105424 /				\$14.96	
750,000 / 06/2014	2,213	2,798	585	\$0.05760	
Color Network Printer				\$33.70	
KMBS					
Room 178 Teachers' 1st Floor					
Konica Minolta BH958 / 95 PPM	277,629	597,637	320,008	\$0.003280	None at this time.
A796011000345 / 9465 0782				\$1,049.63	
5,000,000 / 06/2016	0	0	0	\$0.00000	
Black Photocopier				\$0.00	
KMBS					
Room 184 Grade 2 McDonald					
Konica Minolta BH3301P / 35 PPM	4,196	11,945	7,749	\$0.006280	None at this time.
A63P015000210 / 9467 6560				\$48.66	
500,000 / 11/2015	0	0	0	\$0.00000	
Black Network Printer				\$0.00	
KMBS					

<i>Make-Model / Speed</i>	<i>Date of Last Upgrade: 8/2/2016</i>				
<i>Serial Number / Vendor ID</i>					
<i>Life / Intro Date</i>					
<i>Vendor</i>	<i>7/1/2017 Meter</i>	<i>6/30/2018 Meter</i>	<i>2017-18 Annual Volume</i>	<i>Cost/Copy Annual Cost</i>	<i>Recommendations</i>
OSSIPEE CENTRAL					
Room 185 Milligan					
Konica Minolta BHC3100P / 32 PPM	3,482	11,150	7,668	\$0.006280	None at this time.
A6DR012105407 / 9467 1579				\$48.16	
750,000 / 06/2014	5,462	20,008	14,546	\$0.05760	
Color Network Printer				\$837.85	
KMBS					
Room 192					
Konica Minolta BH3301P / 35 PPM	9,907	17,567	7,660	\$0.006280	None at this time.
A63P015000155 / 9467 6558				\$48.10	
500,000 / 11/2015	0	0	0	\$0.00000	
Black Network Printer				\$0.00	
KMBS					
Room 301 Teachers' 2nd Floor					
Konica Minolta BH958 / 95 PPM	248,096	463,240	215,144	\$0.003280	None at this time.
A796011000337 / 9465 0781				\$705.67	
5,000,000 / 06/2016	0	0	0	\$0.00000	
Black Photocopier				\$0.00	
KMBS					
Room 308 Wheeler					
Konica Minolta BH3301P / 35 PPM	4,777	10,395	5,618	\$0.006280	None at this time.
A63P015000192 / 9467 6557				\$35.28	
500,000 / 11/2015	0	0	0	\$0.00000	
Black Network Printer				\$0.00	
KMBS					

<i>Make-Model / Speed</i>	<i>Date of Last Upgrade: 8/2/2016</i>				
<i>Serial Number / Vendor ID</i>					
<i>Life / Intro Date</i>					
<i>Vendor</i>	<i>7/1/2017 Meter</i>	<i>6/30/2018 Meter</i>	<i>2017-18 Annual Volume</i>	<i>Cost/Copy Annual Cost</i>	<i>Recommendations</i>
OSSIPEE CENTRAL					
Room 310 Lab					
Konica Minolta BH3320 / 35 PPM	4,604	11,956	7,352	\$0.004100	None at this time.
A6WP011006571 / 9467 6564				\$30.14	
750,000 / 02/2014	0	0	0	\$0.00000	
Black Laser MFP				\$0.00	
KMBS					
Konica Minolta BHC3100P / 32 PPM	3,339	7,290	3,951	\$0.006280	None at this time.
A6DR012105361 / 9467 1569				\$24.81	
750,000 / 06/2014	7,124	15,872	8,748	\$0.05760	
Color Network Printer				\$503.88	
KMBS					
Room 322 McNevich					
Konica Minolta BH3301P / 35 PPM	9,955	16,599	6,644	\$0.006280	None at this time.
A63P015000161 / 9467 6569				\$41.72	
500,000 / 11/2015	0	0	0	\$0.00000	
Black Network Printer				\$0.00	
KMBS					
Room 323					
Konica Minolta BH3301P / 35 PPM	3,481	8,649	5,168	\$0.006280	None at this time.
A63P015000203 / 9467 6556				\$32.46	
500,000 / 11/2015	0	0	0	\$0.00000	
Black Network Printer				\$0.00	
KMBS					
Subtotals Black			827,457	\$3,019.90	
Subtotals Color			98,035	\$5,320.21	

Date of Last Upgrade: 8/2/2016					
Make-Model / Speed Serial Number / Vendor ID Life / Intro Date Vendor	7/1/2017 Meter	6/30/2018 Meter	2017-18 Annual Volume	Cost/Copy Annual Cost	Recommendations
SAU 49 DISTRICT					
1st Floor					
Konica Minolta BH552 / 55 PPM A2WV011007627 / 9348 4143 3,000,000 / 02/2011 Black Photocopier KMBS	198,547 0	251,347 0	52,800 0	\$0.004200 \$221.76 \$0.00000 \$0.00	7 years from Intro.
2nd Floor					
Konica Minolta BHC554 / 55 PPM A5AY011000577 / 9342 4466 3,000,000 / 08/2012 Color Photocopier KMBS	157,066 82,439	206,931 115,212	49,865 32,773	\$0.003280 \$163.56 \$0.05399 \$1,769.41	None at this time.
2nd Floor Work Area					
Konica Minolta BHC3100P / 32 PPM A6DR012105343 / 9467 1588 750,000 / 06/2014 Color Network Printer KMBS	3,817 4,926	10,958 14,927	7,141 10,001	\$0.006280 \$44.85 \$0.05760 \$576.06	None at this time.
Accounts Payable - Nancy Rose					
Konica Minolta BH3301P / 35 PPM A63P015000207 / 9467 6579 500,000 / 11/2015 Black Network Printer KMBS	4,427 0	9,602 0	5,175 0	\$0.006280 \$32.50 \$0.00000 \$0.00	None at this time.

Date of Last Upgrade: 8/2/2016					
Make-Model / Speed Serial Number / Vendor ID Life / Intro Date Vendor	7/1/2017 Meter	6/30/2018 Meter	2017-18 Annual Volume	Cost/Copy Annual Cost	Recommendations
SAU 49 DISTRICT					
Bookkeeping - Sandy Libby					
Konica Minolta BH3301P / 35 PPM A63P015000233 / 9467 6578 500,000 / 11/2015 Black Network Printer KMBS	5,577 0	12,288 0	6,711 0	\$0.006280 \$42.15 \$0.00000 \$0.00	None at this time.
Budget SENSE					
Konica Minolta BH4700P / 50 PPM A63N011014875 / 9467 6582 2,000,000 / 04/2013 Black Network Printer KMBS	27,260 0	70,178 0	42,918 0	\$0.006280 \$269.53 \$0.00000 \$0.00	None at this time.
Bus Repair Facility					
Konica Minolta BH3301P / 35 PPM A63P015000205 / 9467 6584 500,000 / 11/2015 Black Network Printer KMBS	1,483 0	3,131 0	1,648 0	\$0.006280 \$10.35 \$0.00000 \$0.00	None at this time.
Business Office - Mary Patry					
Konica Minolta BH4700P / 50 PPM A63N011014782 / 9467 6581 2,000,000 / 04/2013 Black Network Printer KMBS	5,076 0	11,981 0	6,905 0	\$0.006280 \$43.36 \$0.00000 \$0.00	None at this time.

Date of Last Upgrade: 8/2/2016						
Make-Model / Speed	Serial Number / Vendor ID	Life / Intro Date	Vendor	2017-18 Annual Volume	Cost/Copy Annual Cost	Recommendations
		7/1/2017 Meter	6/30/2018 Meter			
SAU 49 DISTRICT						
Curriculum Office - Katey Hill						
Konica Minolta BHC3100P / 32 PPM	A6DR012105341 / 9467 1586	1,183	2,224	1,041	\$0.006280	None at this time.
750,000 / 06/2014		1,547	6,624	5,077	\$6.54	
Color Network Printer					\$0.05760	
KMBS					\$292.44	
Human Resources - Cheryl Sawyer						
Konica Minolta BHC3100P / 32 PPM	A6DR012105349 / 9467 1585	4,554	10,552	5,998	\$0.006280	None at this time.
750,000 / 06/2014		7,813	19,603	11,790	\$37.67	
Color Network Printer					\$0.05760	
KMBS					\$679.10	
Payroll - Barb Melnik						
Konica Minolta BH4700P / 50 PPM	A63N011014872 / 9467 6583	11,498	23,876	12,378	\$0.006280	None at this time.
2,000,000 / 04/2013		0	0	0	\$77.73	
Black Network Printer					\$0.00000	
KMBS					\$0.00	
Plant Operations - Jody Downey						
Konica Minolta BHC3100P / 32 PPM	A6DR012105355 / 9467 1590	615	1,363	748	\$0.006280	None at this time.
750,000 / 06/2014		947	2,175	1,228	\$4.70	
Color Network Printer					\$0.05760	
KMBS					\$70.73	

<i>Make-Model / Speed Serial Number / Vendor ID Life / Intro Date</i>					<i>Date of Last Upgrade: 8/2/2016</i>
<i>Vendor</i>	<i>7/1/2017 Meter</i>	<i>6/30/2018 Meter</i>	<i>2017-18 Annual Volume</i>	<i>Cost/Copy Annual Cost</i>	<i>Recommendations</i>
SAU 49 DISTRICT					
Reception - Michelle Capone					
Konica Minolta BH3301P / 35 PPM A63P015000241 / 9467 6580 500,000 / 11/2015 Black Network Printer KMBS	3,448 0	5,208 0	1,760 0	\$0.006280 \$11.05 \$0.00000 \$0.00	None at this time.
Special Ed Admin Assistant 2nd Floor					
Konica Minolta BHC3100P / 32 PPM A6DR012105313 / 9467 1587 750,000 / 06/2014 Color Network Printer KMBS	3,356 1,855	7,961 4,517	4,605 2,662	\$0.006280 \$28.92 \$0.05760 \$153.33	None at this time.
Transportation Office					
Konica Minolta BH454E / 45 PPM A61E011025077 / 9467 6519 1,000,000 / 11/2013 Black Photocopier KMBS	34,197 0	63,799 0	29,602 0	\$0.003280 \$97.09 \$0.00000 \$0.00	None at this time.
Konica Minolta BHC3100P / 32 PPM A6DR012105346 / 9467 1591 750,000 / 06/2014 Color Network Printer KMBS	1,665 2,150	3,563 6,457	1,898 4,307	\$0.006280 \$11.92 \$0.05760 \$248.08	None at this time.
Subtotals Black			231,193	\$1,103.67	
Subtotals Color			67,838	\$3,789.16	

<i>Make-Model / Speed</i> <i>Serial Number / Vendor ID</i> <i>Life / Intro Date</i> <i>Vendor</i>					<i>Date of Last Upgrade: 8/2/2016</i>	
	<i>7/1/2017</i> <i>Meter</i>	<i>6/30/2018</i> <i>Meter</i>	<i>2017-18</i> <i>Annual</i> <i>Volume</i>	<i>Cost/Copy</i> <i>Annual Cost</i>	<i>Recommendations</i>	
TUFTONBORO CENTRAL						
<i>Barton Classroom</i>						
Konica Minolta BHC3100P / 32 PPM A6DR012105381 / 9467 1567 750,000 / 06/2014 Color Network Printer KMBS	0 0	3,777 5,597	3,777 5,597	\$0.006280 \$23.72 \$0.05760 \$322.39	None at this time.	
<i>Main Office</i>						
Konica Minolta BH3301P / 35 PPM A63P015000200 / 9465 0698 500,000 / 11/2015 Black Network Printer KMBS	2,728 0	5,643 0	2,915 0	\$0.006280 \$18.31 \$0.00000 \$0.00	None at this time.	
Konica Minolta BHC654E / 65 PPM A2X1017017763 / 9467 6516 3,000,000 / 07/2013 Color Photocopier KMBS	148,190 71,341	303,461 145,828	155,271 74,487	\$0.003280 \$509.29 \$0.05115 \$3,810.01	None at this time.	
<i>Media Center Circulation Desk</i>						
Konica Minolta BHC3100P / 32 PPM A6DR012105394 / 9467 1566 750,000 / 06/2014 Color Network Printer KMBS	962 2,074	2,704 6,912	1,742 4,838	\$0.006280 \$10.94 \$0.05760 \$278.67	None at this time.	

Date of Last Upgrade: 8/2/2016					
Make-Model / Speed Serial Number / Vendor ID Life / Intro Date Vendor	7/1/2017 Meter	6/30/2018 Meter	2017-18 Annual Volume	Cost/Copy Annual Cost	Recommendations
TUFTONBORO CENTRAL					
Media Center Office					
Konica Minolta BHC3100P / 32 PPM A6DR012105385 / 9467 1568 750,000 / 06/2014 Color Network Printer KMBS	2,224 5,366	5,367 13,964	3,143 8,598	\$0.006280 \$19.74 \$0.05760 \$495.24	None at this time.
Media Lab					
Konica Minolta BH3320 / 35 PPM A6WP011006339 / 9465 0702 750,000 / 02/2014 Black Laser MFP KMBS	1,674 0	4,851 0	3,177 0	\$0.004100 \$13.03 \$0.00000 \$0.00	None at this time.
Room 128 - Kitchen Office					
Konica Minolta BH3301P / 35 PPM A63P015000213 / 9465 0699 500,000 / 11/2015 Black Network Printer KMBS	1,528 0	2,562 0	1,034 0	\$0.006280 \$6.49 \$0.00000 \$0.00	None at this time.
Room 134					
Konica Minolta BH3301P / 35 PPM A63P015000513 / 9465 0700 500,000 / 11/2015 Black Network Printer KMBS	3,535 0	5,840 0	2,305 0	\$0.006280 \$14.48 \$0.00000 \$0.00	None at this time.

					Date of Last Upgrade: 8/2/2016
Make-Model / Speed					
Serial Number / Vendor ID					
Life / Intro Date			2017-18		
Vendor	7/1/2017 Meter	6/30/2018 Meter	Annual Volume	Cost/Copy Annual Cost	Recommendations
TUFTONBORO CENTRAL					
Room 141 SPED					
Konica Minolta BH3301P / 35 PPM	1,810	3,190	1,380	\$0.006280	None at this time.
A63P015000508 / 9465 0701				\$8.67	
500,000 / 11/2015	0	0	0	\$0.00000	
Black Network Printer				\$0.00	
KMBS					
Room 145 Reading Area					
Konica Minolta BH454E / 45 PPM	41,838	80,418	38,580	\$0.003280	None at this time.
A61E011025110 / 9467 6524				\$126.54	
1,000,000 / 11/2013	0	0	0	\$0.00000	
Black Photocopier				\$0.00	
KMBS					
Subtotals Black			213,324	\$751.20	
Subtotals Color			93,520	\$4,906.31	

<i>District Wide Black Totals</i>	6,085,532	\$23,105.02
<i>District Wide Color Totals</i>	1,068,741	\$57,718.30

SPC Service & Supply Cost Savings

These tables compare your equipment cost per copy for service and supplies (black prints or copies only) before becoming an **SPC client on 8/1/2005** with your projected cost per copy for the new fiscal year through SPC. Annual Volume represents actual 2017-18 fiscal year black print usage. The second table represents your annual and five-year cost savings compared to your previous cost per copy rate.

BEFORE SPC

Current Volume	PriorCPC	Average Annual Cost
6,085,532	\$0.02193	\$133,455.72

CURRENTLY WITH SPC

Current Volume	Current CPC*	Current Cost	Cost Savings	5 Year Savings
6,085,532	\$0.00380	\$23,125.02	\$110,330.70	\$551,653.48

Today the Cooperative Buying of SPC has netted annual cost savings, on average, of \$110,330.70 x 13 years as a Client

=\$1,434,299.04 Cost Savings!

*This CPC is an average of your copiers and printers together. Your copier cpc is substantially lower than this average.

Projected Equipment Costs by Building - Black

This table represents projected expenses for BLACK prints or copies by building based on recent activity. Approximate current paper case costs and averaged current annual lease payment are figured in to provide budget information for the upcoming fiscal year.

Building	Projected Black Volume	Projected Black Usage Cost	Approx.Paper Cost	Average Annual Equipment Cost	Total Projected Black Usage Cost
Carpenter Elementary	608,766	\$2,176.34	\$3,020.70	\$11,180.39	\$16,377.43
Crescent Lake	562,313	\$2,342.96	\$2,790.20	\$10,327.25	\$15,460.41
Effingham Elementary	204,501	\$852.42	\$1,014.73	\$3,755.80	\$5,622.95
Kingswood Regional Art Center	171,380	\$778.82	\$850.39	\$3,147.51	\$4,776.72
Kingswood Regional High	1,770,176	\$6,720.41	\$8,783.61	\$32,510.46	\$48,014.48
Kingswood Regional Middle	772,638	\$3,133.04	\$3,833.83	\$14,190.01	\$21,156.88
Lakes Region Technical Center	157,167	\$625.72	\$779.86	\$2,886.48	\$4,292.06
Middleton Elementary	250,562	\$887.46	\$1,243.29	\$4,601.74	\$6,732.48
New Durham Elementary	316,055	\$1,218.71	\$1,568.26	\$5,804.56	\$8,591.54
Ossipee Central	827,457	\$3,103.51	\$4,105.84	\$15,196.80	\$22,406.15
SAU 49 District	231,193	\$1,134.96	\$1,147.18	\$4,246.01	\$6,528.15
Tuftonboro Central	213,324	\$771.93	\$1,058.51	\$3,917.84	\$5,748.28
Total	6,085,532	\$23,746.28	\$30,196.41	\$111,764.85	\$165,707.54

SPC Equipment Bids:

Presently our bids are coming in between 14.77% to 20.87% of Retail while the current Salesman's Cost is 50% of Retail. For Example: An Konica Minolta BH 958 RADF Duplex Finisher 3-Hole Punch CIF-Print-Color Scan-Hard Drive for Secure Print 95 Copies per Minute with a Retail Cost of \$45,640 is coming in at \$7,342....16% of Retail! Our prices are negotiated and supported directly by the manufacturer.

Projected Equipment Costs by Building - Color

This table represents projected expenses for COLOR prints or copies by building based on recent activity. Current paper case costs and current annual lease payment are NOT figured in to this table, as they are covered in the Black prints report.

Building	Projected Color Volume	Service & Supply Cost
Carpenter Elementary	214,401	\$12,075.97
Crescent Lake	106,383	\$5,878.74
Effingham Elementary	52,086	\$2,897.21
Kingswood Regional Art Center	7,037	\$416.66
Kingswood Regional High	112,891	\$6,489.73
Kingswood Regional Middle	103,075	\$5,688.28
Lakes Region Technical Center	93,786	\$5,124.74
Middleton Elementary	36,328	\$1,925.65
New Durham Elementary	83,361	\$4,427.48
Ossipee Central	98,035	\$5,468.94
SAU 49 District	67,838	\$3,895.10
Tuftonboro Central	93,520	\$5,043.47
Total	1,068,741	\$59,331.97

Service & Supply Usage Profile by Vendor - Black

This table represents actual expenses for BLACK prints or copies by vendor for the current year along with projected service & supply expenses for the upcoming fiscal year. Under SPC's new Simplified Billing Program, SPC will invoice you directly for 50% of the Projected Annual Volume in July and January, and then reconcile based on actual usage in June. Cost per copy typically increases by 5% or CPI annually, whichever is less. **Current year's increase is 2.8%.**

Vendor	Equipment Type	Annual Volume	2017-2018 Cost / Copy	Total Cost	2018- 2019 Cost / Copy	Projected Cost
Konica-Minolta Business Solutions	Black Laser MFP	102,341	\$0.00410	\$419.60	\$0.00421	\$430.86
Konica-Minolta Business Solutions	Black Network Printer	410,020	\$0.00628	\$2,574.93	\$0.00646	\$2,648.73
Konica-Minolta Business Solutions	Black Photocopier	2,837,166	\$0.00328	\$9,305.90	\$0.00337	\$9,561.25
Konica-Minolta Business Solutions	Black Photocopier	447,349	\$0.00410	\$1,834.13	\$0.00421	\$1,883.34
Konica-Minolta Business Solutions	Black Photocopier	770,494	\$0.00420	\$3,236.07	\$0.00432	\$3,328.53
Konica-Minolta Business Solutions	Color Laser MFP	18,802	\$0.00410	\$77.09	\$0.00421	\$79.16
Konica-Minolta Business Solutions	Color Laser MFP	1,167	\$0.00628	\$7.33	\$0.00646	\$7.54
Konica-Minolta Business Solutions	Color Network Printer	245,077	\$0.00628	\$1,539.08	\$0.00646	\$1,583.20
Konica-Minolta Business Solutions	Color Photocopier	1,252,310	\$0.00328	\$4,107.58	\$0.00337	\$4,220.28
Konica-Minolta Business Solutions	Color Photocopier	806	\$0.00410	\$3.30	\$0.00421	\$3.39
Total		6,085,532	\$0.00380	\$23,105.02	\$0.00390	\$23,746.28

Service & Supply Usage Profile by Vendor - Color

This table represents actual and projected expenses for COLOR prints or copies by vendor for the current and next fiscal year. Under SPC's new Simplified Billing Program, SPC will invoice you directly for 50% of the Projected Annual Volume in July and January, and then reconcile based on actual usage in June. Cost per copy typically increases by 5% or CPI annually, whichever is less. **Current year's increase is 2.8%.**

Vendor	Equipment Type	Annual Volume	2017- 2018 Cost / Copy	Total Cost	2018- 2019 Cost / Copy	Projected Cost
Konica-Minolta Business Solutions	Color Laser MFP	11,235	\$0.05760	\$647.14	\$0.05921	\$665.22
Konica-Minolta Business Solutions	Color Network Printer	343,453	\$0.05760	\$19,782.89	\$0.05921	\$20,335.85
Konica-Minolta Business Solutions	Color Photocopier	449,987	\$0.05115	\$23,016.84	\$0.05258	\$23,660.32
Konica-Minolta Business Solutions	Color Photocopier	260,046	\$0.05399	\$14,039.88	\$0.05550	\$14,432.55
Konica-Minolta Business Solutions	Color Photocopier	4,020	\$0.05760	\$231.55	\$0.05921	\$238.02
Total		1,068,741	\$0.05401	\$57,718.30	\$0.05552	\$59,331.97

Reprographic Equipment Assessment

This chart provides the status of your equipment and details of your current lease, if any. *

Total Number of Units	272
Total Number of Units on Lease	258
Total Number of Units Owned	14
Lease Company	Northway Bank
Lease Start Date	8/2/2016
Lease End Date	8/1/2021
Term	5 Annual
Annual Payment usually due on 8/1	\$111,764.85
Remaining Payments	3

**The determination on the lease has no bearing on Service & Supply and Warranty Contracts.*

Leased Equipment

Building	Make/Model	Serial Number
Carpenter Elementary	Konica Minolta BHC3100P	A6DR012104272
Carpenter Elementary	Konica Minolta BH3320	A6WP011006373
Carpenter Elementary	Konica Minolta BHC3100P	A6DR012104353
Carpenter Elementary	Konica Minolta BH3301P	A63P015000171
Carpenter Elementary	Konica Minolta BH3320	A6WP011006371
Carpenter Elementary	Konica Minolta BH3301P	A63P015000238
Carpenter Elementary	Konica Minolta BHC3100P	A6DR012104352
Carpenter Elementary	Konica Minolta BHC3110	A6DT012100491
Carpenter Elementary	Konica Minolta BHC3100P	A6DR012104357
Carpenter Elementary	Konica Minolta BH958	A796011000303
Carpenter Elementary	Konica Minolta BHC3100P	A6DR012104338
Carpenter Elementary	Konica Minolta BHC3100P	A6DR012104348
Carpenter Elementary	Konica Minolta BHC3100P	A6DR012104360
Carpenter Elementary	Konica Minolta BH958	A796011000304
Crescent Lake	Konica Minolta BHC3100P	A6DR012104310
Crescent Lake	Konica Minolta BHC3100P	A6DR012104294
Crescent Lake	Konica Minolta BH3301P	A63P015000583
Crescent Lake	Konica Minolta BHC3100P	A6DR012104210
Crescent Lake	Konica Minolta BH3320	A6WP011006375
Crescent Lake	Konica Minolta BHC3100P	A6DR012104347
Crescent Lake	Konica Minolta BH3301P	A63P015000230
Crescent Lake	Konica Minolta BH3320	A6WP011006327
Crescent Lake	Konica Minolta BHC458	A79M011000435
Crescent Lake	Konica Minolta BHC3100P	A6DR012104280
Effingham Elementary	Konica Minolta BHC3100P	A6DR012104288
Effingham Elementary	Konica Minolta BHC3100P	A6DR012104302

Building	Make/Model	Serial Number
Effingham Elementary	Konica Minolta BHC458	A79M011000383
Effingham Elementary	Konica Minolta BH3320	A6WP011006376
Effingham Elementary	Konica Minolta BH3301P	A63P015000504
Effingham Elementary	Konica Minolta BHC3100P	A6DR012104300
Effingham Elementary	Konica Minolta BHC3100P	A6DR012104198
Effingham Elementary	Konica Minolta BH3301P	A63P015000585
Effingham Elementary	Konica Minolta BHC3100P	A6DR012104229
Effingham Elementary	Konica Minolta BHC3100P	A6DR012105410
Effingham Elementary	Konica Minolta BHC3100P	A6DR012104299
Kingswood Regional Art Center	Konica Minolta BHC3100P	A6DR012104192
Kingswood Regional Art Center	Konica Minolta BH4700P	A63N011014870
Kingswood Regional Art Center	Konica Minolta BHC3100P	A6DR012104170
Kingswood Regional Art Center	Konica Minolta BHC3100P	A6DR012104194
Kingswood Regional Art Center	Konica Minolta BHC3350	A4Y4011014121
Kingswood Regional Art Center	Konica Minolta BH3301P	A63P015000479
Kingswood Regional Art Center	Konica Minolta BH3301P	A63P015000626
Kingswood Regional High	Konica Minolta BHC3100P	A6DR012104209
Kingswood Regional High	Konica Minolta BH4700P	A63N011014877
Kingswood Regional High	Konica Minolta BHC3100P	A6DR012105230
Kingswood Regional High	Konica Minolta BHC3100P	A6DR012104301
Kingswood Regional High	Konica Minolta BHC3350	A4Y4011014026
Kingswood Regional High	Konica Minolta BHC308	A7PY011011294
Kingswood Regional High	Konica Minolta BH3301P	A63P015000515

Building	Make/Model	Serial Number
Kingswood Regional High	Konica Minolta BHC3100P	A6DR012104296
Kingswood Regional High	Konica Minolta BHC3100P	A6DR012105202
Kingswood Regional High	Konica Minolta BHC3100P	A6DR012105228
Kingswood Regional High	Konica Minolta BHC3110	A6DT012102683
Kingswood Regional High	Konica Minolta BH3301P	A63P015000525
Kingswood Regional High	Konica Minolta BHC3100P	A6DR012104206
Kingswood Regional High	Konica Minolta BHC3100P	A6DR012104297
Kingswood Regional High	Konica Minolta BH3301P	A63P015000527
Kingswood Regional High	Konica Minolta BH3320	A6WP011006570
Kingswood Regional High	Konica Minolta BH3301P	A63P015000496
Kingswood Regional High	Konica Minolta BHC3100P	A6DR012104200
Kingswood Regional High	Konica Minolta BHC3100P	A6DR012105121
Kingswood Regional High	Konica Minolta BH3301P	A63P015000467
Kingswood Regional High	Konica Minolta BH3301P	A63P015000530
Kingswood Regional High	Konica Minolta BH3301P	A63P015000531
Kingswood Regional High	Konica Minolta BHC3100P	A6DR012104298
Kingswood Regional High	Konica Minolta BH4700P	A63N011014867
Kingswood Regional High	Konica Minolta BHC3100P	A6DR012104207
Kingswood Regional High	Konica Minolta BHC3100P	A6DR012104232
Kingswood Regional High	Konica Minolta BH4700P	A63N011014868
Kingswood Regional High	Konica Minolta BH958	A796011000285
Kingswood Regional High	Konica Minolta BHC3100P	A6DR012104223
Kingswood Regional High	Konica Minolta BH4020	A6WD011004951
Kingswood Regional High	Konica Minolta BHC3100P	A6DR012104224
Kingswood Regional High	Konica Minolta BHC3100P	A6DR012105214
Kingswood Regional High	Konica Minolta BH3301P	A63P015000510
Kingswood Regional High	Konica Minolta BH3301P	A63P015000534
Kingswood Regional High	Konica Minolta BHC3100P	A6DR012104228

Building	Make/Model	Serial Number
Kingswood Regional High	Konica Minolta BH3301P	A63P015000505
Kingswood Regional High	Konica Minolta BHC3100P	A6DR012104285
Kingswood Regional High	Konica Minolta BHC3100P	A6DR012104912
Kingswood Regional High	Konica Minolta BHC3110	A6DT012101458
Kingswood Regional High	Konica Minolta BH3301P	A63P015000526
Kingswood Regional High	Konica Minolta BH3301P	A63P015000517
Kingswood Regional High	Konica Minolta BH4700P	A63N011014873
Kingswood Regional High	Konica Minolta BHC3100P	A6DR012105342
Kingswood Regional High	Konica Minolta BH3301P	A63P015000512
Kingswood Regional High	Konica Minolta BH3301P	A63P015000503
Kingswood Regional High	Konica Minolta BH3320	A6WP011006396
Kingswood Regional High	Konica Minolta BHC3100P	A6DR012104231
Kingswood Regional High	Konica Minolta BHC3100P	A6DR012105269
Kingswood Regional High	Konica Minolta BH3301P	A63P015000536
Kingswood Regional High	Konica Minolta BH958	A796011000249
Kingswood Regional High	Konica Minolta BH3301P	A63P015000523
Kingswood Regional High	Konica Minolta BH754	A55V011000609
Kingswood Regional High	Konica Minolta BHC3100P	A6DR012104303
Kingswood Regional High	Konica Minolta BH4700P	A63N011014871
Kingswood Regional High	Konica Minolta BH3301P	A63P015000516
Kingswood Regional High	Konica Minolta BH3301P	A63P015000529
Kingswood Regional High	Konica Minolta BH3301P	A63P015000506
Kingswood Regional High	Konica Minolta BHC3100P	A6DR012104205
Kingswood Regional High	Konica Minolta BH3301P	A63P015000511
Kingswood Regional High	Konica Minolta BHC3100P	A6DR012104204
Kingswood Regional High	Konica Minolta BH3301P	A63P015000528
Kingswood Regional High	Konica Minolta BH3301P	A63P015000497
Kingswood Regional High	Konica Minolta BH3301P	A63P015000477

Building	Make/Model	Serial Number
Kingswood Regional High	Konica Minolta BH3301P	A63P015000521
Kingswood Regional High	Konica Minolta BH3301P	A63P015000524
Kingswood Regional High	Konica Minolta BHC3100P	A6DR012104281
Kingswood Regional Middle	Konica Minolta BH3301P	A63P015000350
Kingswood Regional Middle	Konica Minolta BH3301P	A63P015000501
Kingswood Regional Middle	Konica Minolta BH3301P	A63P015000500
Kingswood Regional Middle	Konica Minolta BH3301P	A63P015000507
Kingswood Regional Middle	Konica Minolta BHC3100P	A6DR012105312
Kingswood Regional Middle	Konica Minolta BHC3100P	A6DR012105309
Kingswood Regional Middle	Konica Minolta BH3301P	A63P015000519
Kingswood Regional Middle	Konica Minolta BHC3100P	A6DR012105259
Kingswood Regional Middle	Konica Minolta BH3301P	A63P015000361
Kingswood Regional Middle	Konica Minolta BHC3100P	A6DR012105281
Kingswood Regional Middle	Konica Minolta BH3301P	A63P015000146
Kingswood Regional Middle	Konica Minolta BHC3100P	A6DR012105280
Kingswood Regional Middle	Konica Minolta BH3301P	A63P015000243
Kingswood Regional Middle	Konica Minolta BHC3100P	A6DR012105322
Kingswood Regional Middle	Konica Minolta BH3301P	A63P015000365
Kingswood Regional Middle	Konica Minolta BHC3100P	A6DR012105320
Kingswood Regional Middle	Konica Minolta BH3301P	A63P015000163
Kingswood Regional Middle	Konica Minolta BH3301P	A63P015000514
Kingswood Regional Middle	Konica Minolta BHC3100P	A6DR012105273
Kingswood Regional Middle	Konica Minolta BH3301P	A63P015000158
Kingswood Regional Middle	Konica Minolta BH3301P	A63P015000251
Kingswood Regional Middle	Konica Minolta BH3301P	A63P015000249
Kingswood Regional Middle	Konica Minolta BHC3100P	A6DR012105231
Kingswood Regional Middle	Konica Minolta BH3301P	A63P015000151
Kingswood Regional Middle	Konica Minolta BH3301P	A63P015000139

Building	Make/Model	Serial Number
Kingswood Regional Middle	Konica Minolta BH4700P	A63N011014863
Kingswood Regional Middle	Konica Minolta BHC3100P	A6DR012105245
Kingswood Regional Middle	Konica Minolta BHC3100P	A6DR012105285
Kingswood Regional Middle	Konica Minolta BH958	A796011000302
Kingswood Regional Middle	Konica Minolta BH3301P	A63P015000248
Kingswood Regional Middle	Konica Minolta BH3301P	A63P015000327
Kingswood Regional Middle	Konica Minolta BH3301P	A63P015000242
Kingswood Regional Middle	Konica Minolta BHC3100P	A6DR012105277
Kingswood Regional Middle	Konica Minolta BHC3100P	A6DR012105262
Kingswood Regional Middle	Konica Minolta BHC3100P	A6DR012105255
Kingswood Regional Middle	Konica Minolta BHC3100P	A6DR012105324
Kingswood Regional Middle	Konica Minolta BH3301P	A63P015000153
Kingswood Regional Middle	Konica Minolta BH3301P	A63P015000247
Kingswood Regional Middle	Konica Minolta BH3301P	A63P015000150
Kingswood Regional Middle	Konica Minolta BHC3100P	A6DR012105321
Kingswood Regional Middle	Konica Minolta BHC3100P	A6DR012105278
Kingswood Regional Middle	Konica Minolta BH3301P	A63P015000237
Kingswood Regional Middle	Konica Minolta BH3301P	A63P015000211
Kingswood Regional Middle	Konica Minolta BH3301P	A63P015000344
Kingswood Regional Middle	Konica Minolta BH3301P	A63P015000275
Kingswood Regional Middle	Konica Minolta BHC3100P	A6DR012105257
Kingswood Regional Middle	Konica Minolta BH3320	A6WP011006568
Kingswood Regional Middle	Konica Minolta BHC3100P	A6DR012105274
Kingswood Regional Middle	Konica Minolta BH4700P	A63N011014876
Kingswood Regional Middle	Konica Minolta BHC654E	A2X1017016661
Kingswood Regional Middle	Konica Minolta BHC3100P	A6DR012105325
Kingswood Regional Middle	Konica Minolta BH3301P	A63P015000349
Kingswood Regional Middle	Konica Minolta BHC3350	A4Y4011014059

Building	Make/Model	Serial Number
Kingswood Regional Middle	Konica Minolta BH3301P	A63P015000354
Kingswood Regional Middle	Konica Minolta BHC3100P	A6DR012105258
Kingswood Regional Middle	Konica Minolta BHC3100P	A6DR012105326
Kingswood Regional Middle	Konica Minolta BH3301P	A63P015000229
Kingswood Regional Middle	Konica Minolta BH3301P	A63P015000250
Kingswood Regional Middle	Konica Minolta BH3301P	A63P015000518
Kingswood Regional Middle	Konica Minolta BHC3100P	A6DR012105260
Lakes Region Technical Center	Konica Minolta BHC3100P	A6DR012105399
Lakes Region Technical Center	Konica Minolta BHC3100P	A6DR012105408
Lakes Region Technical Center	Konica Minolta BH3301P	A63P015000188
Lakes Region Technical Center	Konica Minolta BH3301P	A63P015000493
Lakes Region Technical Center	Konica Minolta BHC3100P	A6DR012105352
Lakes Region Technical Center	Konica Minolta BHC3350	A4Y4011014178
Lakes Region Technical Center	Konica Minolta BH3320	A6WP011006366
Lakes Region Technical Center	Konica Minolta BHC3100P	A6DR012105272
Lakes Region Technical Center	Konica Minolta BHC3100P	A6DR012105413
Lakes Region Technical Center	Konica Minolta BHC3100P	A6DR012105279
Lakes Region Technical Center	Konica Minolta BH3301P	A63P015000537
Lakes Region Technical Center	Konica Minolta BHC458	A79M011000395

Building	Make/Model	Serial Number
Lakes Region Technical Center	Konica Minolta BH3320	A6WP011006305
Lakes Region Technical Center	Konica Minolta BH454E	A61E011025092
Lakes Region Technical Center	Konica Minolta BH3301P	A63P015000520
Lakes Region Technical Center	Konica Minolta BHC3100P	A6DR012105351
Lakes Region Technical Center	Konica Minolta BHC3100P	A6DR012105244
Middleton Elementary	Konica Minolta BHC3100P	A6DR012105356
Middleton Elementary	Konica Minolta BH3301P	A63P015000144
Middleton Elementary	Konica Minolta BHC3100P	A6DR012105350
Middleton Elementary	Konica Minolta BH958	A796011000346
Middleton Elementary	Konica Minolta BH3301P	A63P015000239
Middleton Elementary	Konica Minolta BH3301P	A63P015000222
Middleton Elementary	Konica Minolta BHC654	A2X1017017792
Middleton Elementary	Konica Minolta BH3301P	A63P015000240
New Durham Elementary	Konica Minolta BHC654E	A2X1017017783
New Durham Elementary	Konica Minolta BH3320	A6WP011006563
New Durham Elementary	Konica Minolta BH3301P	A63P015000157
New Durham Elementary	Konica Minolta BH3320	A6WP011006541
New Durham Elementary	Konica Minolta BHC3100P	A6DR012105318
New Durham Elementary	Konica Minolta BHC3100P	A6DR012105395
New Durham Elementary	Konica Minolta BHC3100P	A6DR012105380
New Durham Elementary	Konica Minolta BH3301P	A63P015000204
New Durham Elementary	Konica Minolta BH3301P	A63P015000201
New Durham Elementary	Konica Minolta BH3320	A6WP011006531
New Durham Elementary	Konica Minolta BH3301P	A63P015000181

Building	Make/Model	Serial Number
New Durham Elementary	Konica Minolta BHC3100P	A6DR012105379
New Durham Elementary	Konica Minolta BHC3100P	A6DR012105373
Ossipee Central	Konica Minolta BH3301P	A63P015000195
Ossipee Central	Konica Minolta BH3301P	A63P015000199
Ossipee Central	Konica Minolta BH958	A796011000337
Ossipee Central	Konica Minolta BHC3100P	A6DR012105424
Ossipee Central	Konica Minolta BHC3100P	A6DR012105421
Ossipee Central	Konica Minolta BH4700P	A63N011014869
Ossipee Central	Konica Minolta BH3301P	A63P015000202
Ossipee Central	Konica Minolta BH3301P	A63P015000161
Ossipee Central	Konica Minolta BH3301P	A63P015000225
Ossipee Central	Konica Minolta BHC3100P	A6DR012105414
Ossipee Central	Konica Minolta BHC3100P	A6DR012105407
Ossipee Central	Konica Minolta BH3301P	A63P015000155
Ossipee Central	Konica Minolta BHC3100P	A6DR012105425
Ossipee Central	Konica Minolta BH3301P	A63P015000193
Ossipee Central	Konica Minolta BH958	A796011000345
Ossipee Central	Konica Minolta BH3301P	A63P015000189
Ossipee Central	Konica Minolta BHC3100P	A6DR012105427
Ossipee Central	Konica Minolta BHC3100P	A6DR012105415
Ossipee Central	Konica Minolta BHC3100P	A6DR012105388
Ossipee Central	Konica Minolta BHC3100P	A6DR012105416
Ossipee Central	Konica Minolta BH3301P	A63P015000198
Ossipee Central	Konica Minolta BHC3100P	A6DR012105384
Ossipee Central	Konica Minolta BH3301P	A63P015000210
Ossipee Central	Konica Minolta BH3301P	A63P015000192
Ossipee Central	Konica Minolta BHC3100P	A6DR012105361
Ossipee Central	Konica Minolta BH3301P	A63P015000203

Building	Make/Model	Serial Number
Ossipee Central	Konica Minolta BH3320	A6WP011006571
Ossipee Central	Konica Minolta BHC654E	A2X1017017736
SAU 49 District	Konica Minolta BH3301P	A63P015000241
SAU 49 District	Konica Minolta BHC3100P	A6DR012105343
SAU 49 District	Konica Minolta BHC3100P	A6DR012105355
SAU 49 District	Konica Minolta BH3301P	A63P015000205
SAU 49 District	Konica Minolta BH4700P	A63N011014875
SAU 49 District	Konica Minolta BHC3100P	A6DR012105349
SAU 49 District	Konica Minolta BH4700P	A63N011014872
SAU 49 District	Konica Minolta BH3301P	A63P015000207
SAU 49 District	Konica Minolta BH3301P	A63P015000233
SAU 49 District	Konica Minolta BHC3100P	A6DR012105313
SAU 49 District	Konica Minolta BHC3100P	A6DR012105341
SAU 49 District	Konica Minolta BHC3100P	A6DR012105346
SAU 49 District	Konica Minolta BH454E	A61E011025077
SAU 49 District	Konica Minolta BH4700P	A63N011014782
Tuftonboro Central	Konica Minolta BH3301P	A63P015000213
Tuftonboro Central	Konica Minolta BH454E	A61E011025110
Tuftonboro Central	Konica Minolta BH3301P	A63P015000513
Tuftonboro Central	Konica Minolta BH3320	A6WP011006339
Tuftonboro Central	Konica Minolta BHC3100P	A6DR012105385
Tuftonboro Central	Konica Minolta BHC3100P	A6DR012105394
Tuftonboro Central	Konica Minolta BH3301P	A63P015000200
Tuftonboro Central	Konica Minolta BHC654E	A2X1017017763
Tuftonboro Central	Konica Minolta BHC3100P	A6DR012105381
Tuftonboro Central	Konica Minolta BH3301P	A63P015000508

Owned Equipment

Building	Make/Model	Serial Number
Carpenter Elementary	Konica Minolta BHC554	A5AY011000594
Crescent Lake	Konica Minolta BHC454	A5C0011000611
Crescent Lake	Konica Minolta BH754	A55V011000632
Effingham Elementary	Konica Minolta BH754	A55V011000914
Kingswood Regional Art Center	Konica Minolta BH754	A55V011000202
Kingswood Regional High	Konica Minolta BH3301P	A63P015000498
Kingswood Regional High	Konica Minolta BHC454	A5C0011000596
Kingswood Regional High	Konica Minolta BHC554	A5AY011000693
Kingswood Regional Middle	Konica Minolta BH754	A55V011000267
Kingswood Regional Middle	Konica Minolta BH754	A55V011000913
Lakes Region Technical Center	Konica Minolta BHC454	A5C0011000536
New Durham Elementary	Konica Minolta BH754	A55V011000915
SAU 49 District	Konica Minolta BH552	A2WV011007627
SAU 49 District	Konica Minolta BHC554	A5AY011000577



Service and Supply Contract - Client

Specialized Purchasing Consultants ("SPC") hereby contracts with _____ ("Client") to provide comprehensive services, supplies, and maintenance to equipment described on Schedule A ("Equipment") using the Contracted Vendor shown below at a cost per print shown on said Schedule A, commencing on _____ and terminating on June 30, _____. This Service and Supply Contract ("Contract") shall exclude only the cost of paper, transparencies, and staples. Refer to Schedule A for Additional Provisions, if any.

SPC assumes responsibility for all billing and vendor payment. SPC shall invoice Client one-half of the annual projected number of pages multiplied by the cost per print listed on Schedule A. This semi-annual billing will take place July 1 and January 1. Actual meter reads will be collected by SPC either electronically or from Client staff during the month of June. A final Reconciliation spreadsheet and invoice will then be completed and sent to client. Upon payment of each billing invoice during the year, SPC will reimburse Contracted Vendor appropriately. Client is responsible for making payment in full within 30 days of said invoicing to avoid suspension of supplies by Contracted Vendor.

On July 1 of each calendar year during the afore-mentioned term, SPC shall credit Client any unused prepaid pages to Client if fewer copies were made by Client during the Contract period ending on or before June 30 annually than were originally estimated under this Contract for such period. If more pages were consumed than billed in the combined semi-annual billing, an overage invoice will be generated. Following semi-annual billing will be based on previous year volume.

On July 1 of each calendar year during the term of this Contract, SPC, at its option, may increase such costs per print under this Service and Supply Contract by 5% or by a percentage equal to the increase during the immediately preceding 12-month period of "The Consumer Price Index for All Urban Consumers (CPI-U) for the U.S. City Average for All Items, 1982-84 = 100," whichever is less.

Client may terminate Contract at any time with a 30-day written notice. Client will be required to provide final meter reads on all Equipment listed on Schedule A, including those added during the Contract term. Any credits owed to Client after reconciling actual usage versus projected will be paid to Client. Client must return any unused consumables to Contracted Vendor.

**AGREED AND ACCEPTED BY:
Specialized Purchasing Consultants**

By: Skip Tilton

Title: President/Owner

Date: _____

Signature: _____

**AGREED AND ACCEPTED BY:
Client**

By: _____

Title: _____

Date: _____

Signature: _____

Named Contracted Vendor: Vendor

Warranty

Vendor ("Contracted Vendor") hereby warrants to _____ ("Client") that, if any such Equipment described on Schedule B attached hereto malfunctions through no fault of Client during the term commencing on _____ and terminating on June 30, _____, and such Equipment cannot be repaired promptly, Contracted Vendor, *through Specialized Purchasing Consultants*, will replace such Equipment with equipment which is equal to or superior in quality and capabilities to the Equipment being replaced, at no cost to Client. Refer to Schedule B for Additional Provisions to this Warranty.

The only exclusions to this Warranty are as follows:

1. This Warranty will expire for an item of Equipment when the Warranty Life of such item of Equipment in number of copies, as shown on Schedule B attached hereto, is exceeded;
2. This Warranty will expire for an item of Equipment at the date which is ten years after such Equipment was first offered for sale or lease by the manufacturer as shown on Schedule B attached hereto.

AGREED AND ACCEPTED BY:
Vendor

By:

Title:

Date:

Signature: _____

AGREED AND ACCEPTED BY:
Client

By:

Title:

Date:

Signature: _____

StarDoc User Names

Name	User Name
Aaron Bronsen	abronsen@govwentworth.k12.nh.us
Andrea Fournier	afournier@govwentworth.k12.nh.us
Beth Hertzfeld	ehertzfeld@govwentworth.k12.nh.us
Bruce Farr	bfarr
Guy Donnelly	gdonnelly@govwentworth.k12.nh.us
Kathy Cuddy-Egbert	kcuddy-egbert@sau49.org
Kelly Colby-Seavey	kcolbyseavey@govwentworth.k12.nh.us
Mary Patry	mpatry@govwentworth.k12.nh.us
Patti Morrissey	pmorrissey@govwentworth.k12.nh.us
Paul Michalski	pmichalski@govwentworth.k12.nh.us

*If you need to verify your password or if you need to add users, please contact Alex Webster at awebster@spccopypro.com



Benefits of partnering with SPC

Top Benefits to **our CLIENTS**:

1. Cooperative Buying

By definition, is a model that allows a group of buyers with a common interest to pool their buying power in order to negotiate more favorable pricing and better service. SPC's model allows you to pick your preferred vendor!

- SPC's pricing is so strong ***we pay for our own fee*** by acquiring prices lower than what you can do on your own.
- We will ***save you money*** benefiting from the combined purchasing power of more than 69 clients with over 4,100 devices doing more than 239 million copies and prints per year. Annually, we purchase approximately 1,100 units running over 80 million prints!
- We will ***save you time*** by preparing your bid, negotiating with vendors/manufacturers, presenting a total bid analysis and managing the implementation.
- We will ***save you frustration***. We manage your contracts for up to five years from the date of installation.

2. Exclusive STARDoc Software

- Maps all devices and sets up "Interactive Live Floor Plans" of all printing devices, showing you a Before and After Upgrade look; provides a visual for all decision makers over the next five years.
- STAR Doc studies your printing habits and is able to predict your year-end cost months in advance, before you receive your year-end reconciliation invoice.
- Sets up your next year's budget at the click of a mouse.

3. Simplified Billing Program

- Removes the confusion out of billing.
- Eliminates variety of invoices from multiple vendors that come annually and/or quarterly.
- With SPC's Simplified Billing Program, TWO invoices are sent each year from ONE billing source.
- Reconciles all of your devices at the end of the year: You pay only for what you use; no minimums.

4. Five-Year Equipment Replacement Schedule

- SPC's staff surveys key locations that determine life of existing equipment.
- Specs out new equipment needed: Does not allow vendors to undersize during the bidding process.
- Manages the entire bid process down to the install.

5. Annual Report

- A crucial document that extends the life of your equipment, often getting 8 to 10 years of guaranteed performance! Flags copying trends within your organization such as over usage
- You get an overview of your current equipment situation, reports associated with copying and printing costs and, if needed, recommendations for addressing situations posing a problem

6. Vendor Neutral

- SPC does not recommend just one brand; we suggest what's best for you with serviceability in mind.
- We present you with the bid results and offer recommendations, yet the decision is yours to make.

SPC has been serving their clients since 1988, saving millions of dollars along the way.

Based on current actual volumes and CPCs, SPC has generated

Annual Savings of more than \$2.5 million for all of our clients.

That translates into Savings of more than \$12 million over five years!



SPC Values Our Vendors

Overall Benefits to our VENDORS

- Opportunities brought to you – Annually, we purchase approximately 1,100 units running over 80 million prints!
- SPC is well respected in the industry
- SPC values our vendors and speaks highly of them to our clients.
- National Contracts that are all negotiated with the manufacturers at your disposal

Vendor Benefits Pre-Bid & During the Bid Process

- Sharing of previous bid results that help you to negotiate with your manufacturers.
- On-Site Survey of client requirements including mapping all devices.
- Writing of the *Five-Year Equipment Replacement Schedule* (Bid Specs).
- Controls the Bid Specs (Not allowing any vendor to underbid or offer discontinued equipment).
- A chance to sell your 'Value Add' directly to our clients after the bids are in. Customer has the right to pay more than low bid.

Vendor Benefits Before & During Installation

- Digital Needs Analysis: Matching up the machine to installation site.
- Schedule and coordinate Vendor meeting with Client.
- Cover the cost of ESP surge protectors, electrical wiring, computer interface and any unexpected cost!
- Manage installation.
- Audit installation.
- Capture final meter reads for old contracts.
- Close books on old devices & contracts.

Vendor Ongoing Support

- Yearly meter reads.
- Simplified Billing: SPC collects service funds for the Vendor.
- Collection of all meter reads annually and reconciling them with the Client and Vendor.
- STAR Doc: **S**ystem for **T**racking **A**nd **R**eporting **D**ocuments...Manages the budget.
- Annual Reports that flag machines that are being overused and underused thus improving reliability.
- Mediating warranty issues in sensitive locations.

Why do some vendors hesitate to bid?

- Vendors worry that bidding will reduce their margins.
- If word gets out on pricing, they feel that their other customers will call and ask for similar prices.
- Lose control of their account as winning bidder may beat their pricing.
- SPC bids are designed to keep specs equal for all, no chance of providing a lesser piece of equipment.

SPC manages over 4,100 pieces of equipment;
Our relationship with our vendors has never been stronger!