



Specialized Purchasing Consultants

PO Box 190

Gorham, NH 03581

(800) 750-1538

www.spccopypro.com

2014-2015 Annual Report

Year - End Photocopier Analysis

With projected costs for 2015-16

Mark Pavitt
Maine Veterans' Homes
460 Civic Center Drive
Augusta, ME 04330



Specialized Purchasing Consultants Corp.
Serving Maine & New Hampshire since 1988

September 2015

Skip Tilton
President

Corporate Office:
PO Box 190
Gorham, NH 03581
(800) 750-1538
(866) 281-7596 Fax

Mark Pavitt
Maine Veterans' Homes
460 Civic Center Drive
Augusta, ME 04330

Dear Mark:

VISIT US ON THE WEB:
www.spccopypro.com

Once again, on behalf of our staff here at Specialized Purchasing Consultants, we wish to thank you for your continued confidence in us to provide our services to you and your organization. Our relationship is now 12 years strong, and we hope that your trust in us and this relationship will continue for many years to come.

Our Annual Report is designed to provide an overview of the recent past year's reprographic equipment usage and status. We provide recommendations based on the usage to address potential problem areas in order to avoid needless down time and improve equipment reliability for years to come.

Every year we look for new ways to improve our services to save our clients time, money, and effort. Over the past years we have implemented a number of new features, such as Simplified Billing, FM Audit automatic meter reading, SPC STARDoc and recently an IT Asset Management Program, where you can visualize all of your assets laid out on an interactive floor plan that will allow you to schedule out replacement units as needed.

During the upcoming year, we have even more services to offer by way of STARDoc. Some of those new features are listed on the "New Features" page of this report. During our in-person meeting with you to review this report, we will demonstrate those new features as well as discuss your suggestions to enhance STARDoc to be even more useful and beneficial to you and your IT staff. All of these new features are at no additional charge to you.

Thank you again for allowing SPC the opportunity to be of service. If you have any questions or are in need of more information, please let us know.

Sincerely,

Skip Tilton
President

Table of Contents

Meet The Team	3
Equipment Health Status	5
Aging Equipment Summary	6
Building Maine Vet Homes Black Bar Chart	7
Overall Maine Vet Homes Black Bar Chart	8
Building Maine Vet Homes Color Bar Chart	9
Overall Maine Vet Homes Color Bar Chart	10
Maine Vet Homes Bar Chart Compare	11
Usage Profile for Service & Supplies	12
SPC Service & Supply Cost Savings	57
Projected Equipment Cost by Building Black	58
Projected Equipment Cost by Building Color	59
Service & Supply Usage Profile by Vendor Black	60
Service & Supply Usage Profile by Vendor Color	61
Reprographic Equipment Assessment	62
Leased Equipment	63
Owned Equipment	66
Service & Supply Warranty Contract	68
StarDoc User Name	70
STARDoc Time Line	71
STARDoc Asset Management	72
VALUE ADD Documents - Client	74
VALUE ADD Documents - Vendor	75

The SPC Team...

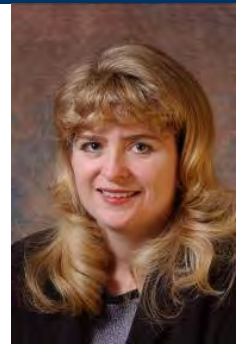
would like to personally thank you for your continued trust and confidence!



Skip Tilton, President

Billie Jo Tilton, Vice President

As co-founders of SPC, Billie Jo and I are very proud of our team of professionals. The concept of group purchasing to save millions has grown since 1988 into providing over 16 different managerial services that increase reliability and extend the life of your equipment. However, none of this would have been possible without the loyalty of over 87 clients (3,800+ machines with 1.6 billion prints over five years). Together, we have realized the lowest prices possible while improving the quality of your service and equipment.



Sue Penney

Administration & Finance Manager

SPC is committed to providing cost-effective and reliable reprographics platforms to our community of clients. My 20+ years of experience in corporate management will be key in strengthening the relationships between SPC's clients and vendors. I

will be focused on responding to your inquiries with the goal of solving any issues that may arise in a timely and efficient manner. Providing quality customer service is my top priority.

Rachel Guay

Accounting Coordinator

I am responsible for the majority of the accounting communications between SPC and its vendors and clients. I will rely upon my years of experience and my strong attention to detail to ensure our clients' needs are well served. It is my goal to work accurately and efficiently and to uphold the high standards of customer satisfaction that SPC has provided to their customers. I look forward to establishing a strong working relationship with each and every one of you.



Pam Weed

Client-Vendor Relations

SPC's clients are my Number One priority. When you have a question, concern, need, or problem related to equipment, service or billing, I am available to assist you in getting it resolved promptly. I am pleased to be able to act as liaison between our

clients and vendors to ensure smooth transitions or quick resolutions.

Joel Heffernan

Field Representative – Client Relations

As Field Representative for SPC, I reach out to the customer to offer help as needed in and during the installation of equipment change over and in assisting in each event. Also, I bring to this company over forty years in the Copier/Printer industry. It is my goal to assure our clients a pleasant experience in using SPC's services.



The SPC Team Continued....



Charles Baca

Operational Support

I've been happily working at SPC for about 2 years, and I'm happy to be working with such an amazing staff. We have grown so much as a team since I started. I enjoy going out and meeting all of you in the field and making sure everything runs smooth. Please feel free to contact me with any questions or concerns you may have.

Robert B. Dutil

Director of Information Technology

I have been working with SPC since February 2000. SPC's honesty, work ethics and loyalty have made my experience with the company a pleasurable journey. SPC is constantly trying to improve their technology to better serve their clients. My goal has been to give our clients and associates the best tools available to allow them to be more productive. By doing this, our clientele has the ability to monitor their assets and keep their costs down. I am excited about what the future holds for SPC and our clients.



Alex Webster

Operations Manager

My top priority is ensuring that our clients receive the absolute best customer service possible. Whether you have a question about your SPC STARDoc site, an upcoming upgrade or your existing equipment, I am here to answer any questions you may have. I am very excited about the new features that we have on STARDoc. We are now able to offer features that normally cost thousands of dollars at no additional charge for our clients.

Equipment Health Status

Total Number of Machines:	123
Total Black Photocopiers	34
Total Color Photocopiers	12
Total Black Network Printers	73
Total Color Network Printers	4
Total Removed from Service:	0
# of Units OFF Warranty:	0
# of Units Approaching End of Warranty:	10
# of Units Overused:	1
# of Units Underused:	1
# of Units Connected to Network with Print and/or Scan	110
Commencement Date:	5/1/2013
# of Annual Payments Left on Lease	3
All Warranties and Service Contracts Expire:	6/30/2019
SPC's FM Audit Print Management Software Loaded	Yes
Printer Contract Signed	Yes

NOTE: When a machine goes off warranty, it does not mean that the service contract expires. It simply means that if a replacement machine becomes necessary, it may not be at "no charge."

Dear Mark,

There is only one machine that I see that could be heading toward a significant reliability issue, if not now then in the near future. Also, there are 14 machines that are owned that are getting up in age. That being said I would not try to address them this year. I would definitely let your lease payment go down another payment. Each time you make a payment you create additional funds for your next upgrade. The goal is to keep your capital cost at the same level or lower.

Finally, I have noticed that you have been acquiring equipment periodically either through us or through the vendor. I want to make sure that nothing falls through the cracks so we should discuss this as well.

Sincerely,

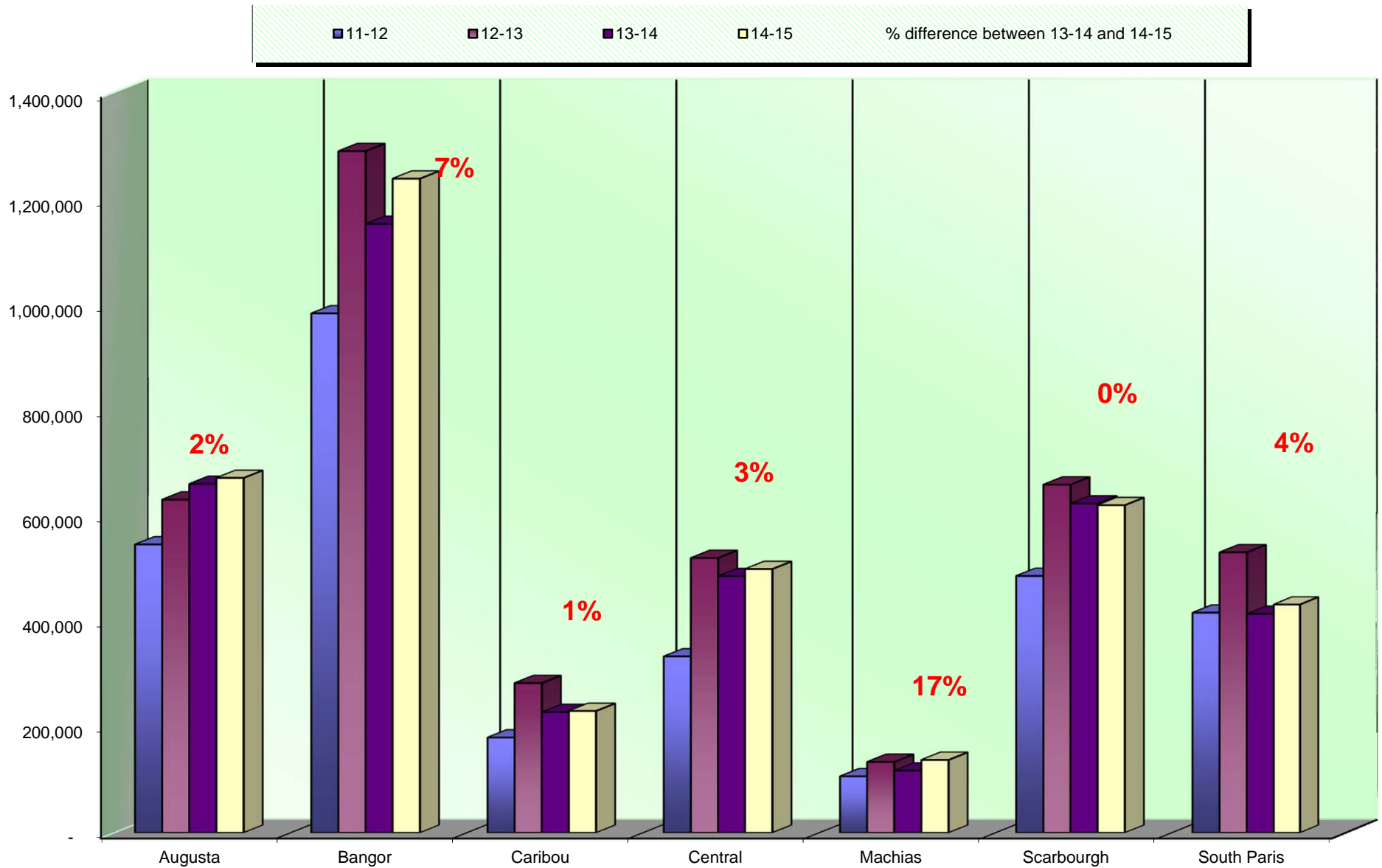
Skip

Aging Equipment Summary

The following equipment is seven or more years from the date they were first offered for sale by the manufacturer. This is a major factor because availability of parts, cost of operation and warranties all become diminished at 10 years from the Date of Introduction. Usage, age, and service history need to be considered to see if they are due for replacement soon.

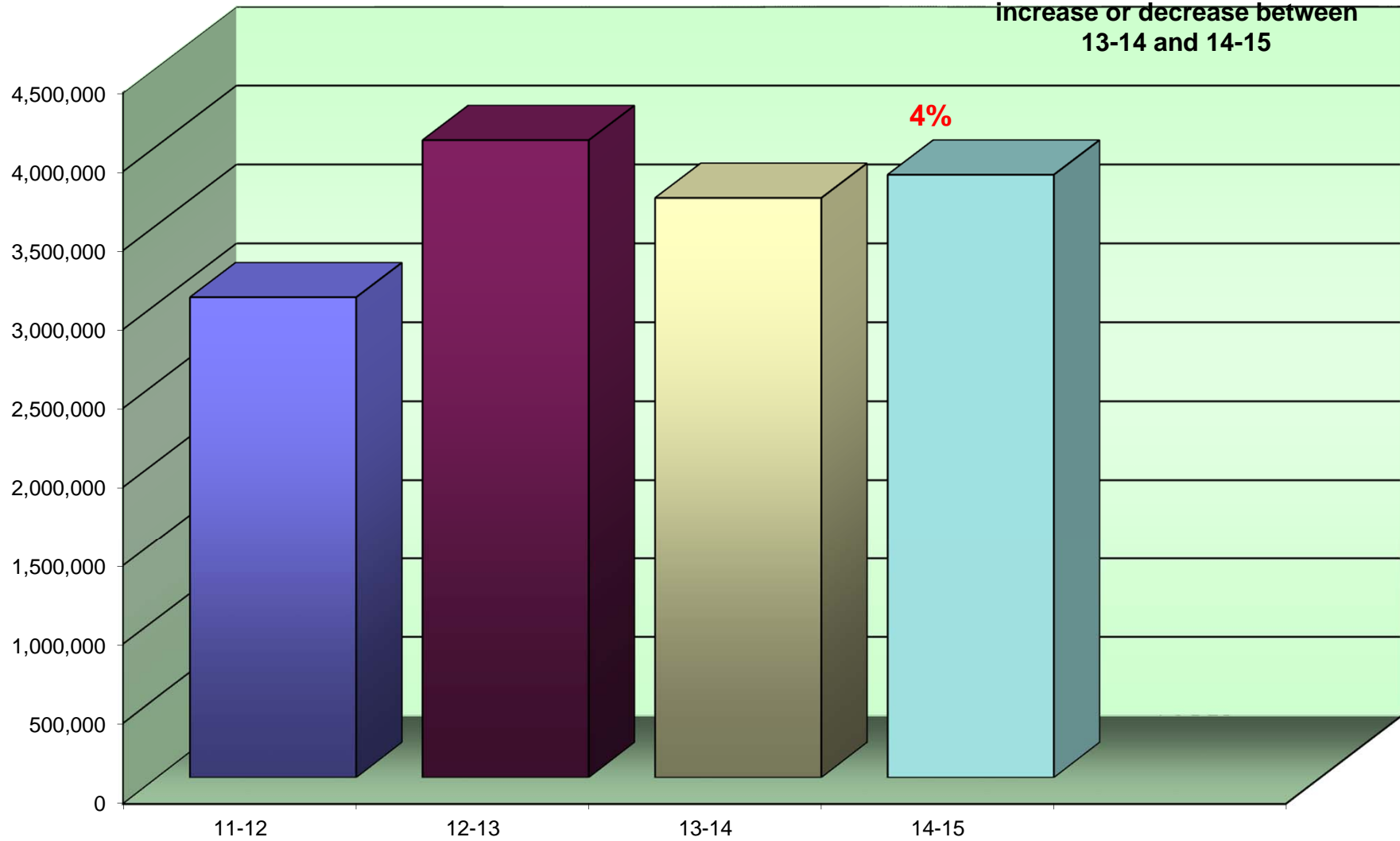
Building	Department	Make / Model	Serial Number	Vendor Name	Intro Date
MVH Augusta	Business Office	HP Laser Jet P4515	CNDY464697	A-COPI	05/2008
MVH Augusta	Human Resources	HP Laser Jet P4515	CNDY894994	A-COPI	05/2008
MVH Augusta	Medical Records	HP Laser Jet P4515	CNDY464732	A-COPI	05/2008
MVH Bangor	Human Resources	HP Laser Jet M1522NF MFP	CNG9C8R01Z	A-COPI	04/2008
MVH Bangor	Resident Care	Ricoh MP5000B	M5605400282	A-COPI	02/2008
MVH Caribou	MDS Coordinator	HP Laser Jet P4015N	CNDY398280	LEVESQUE	05/2008
MVH Central	IT Printer	HP Laser Jet P3010	VNBCCDM2ZV	A-COPI	09/2008
MVH Central	Purchasing	HP Color Laser Jet CM1312nfi	CNF8B1XJIM	A-COPI	06/2008
MVH Machias	Storage - Hot Swap	HP Laser Jet P2035	CNB9X80321	A-COPI	11/2008
MVH Scarborough	Human Resources	HP Laser Jet M1522NF MFP	CNC983P1G8	A-COPI	04/2008

ANNUAL BLACK VOLUME BY BUILDING

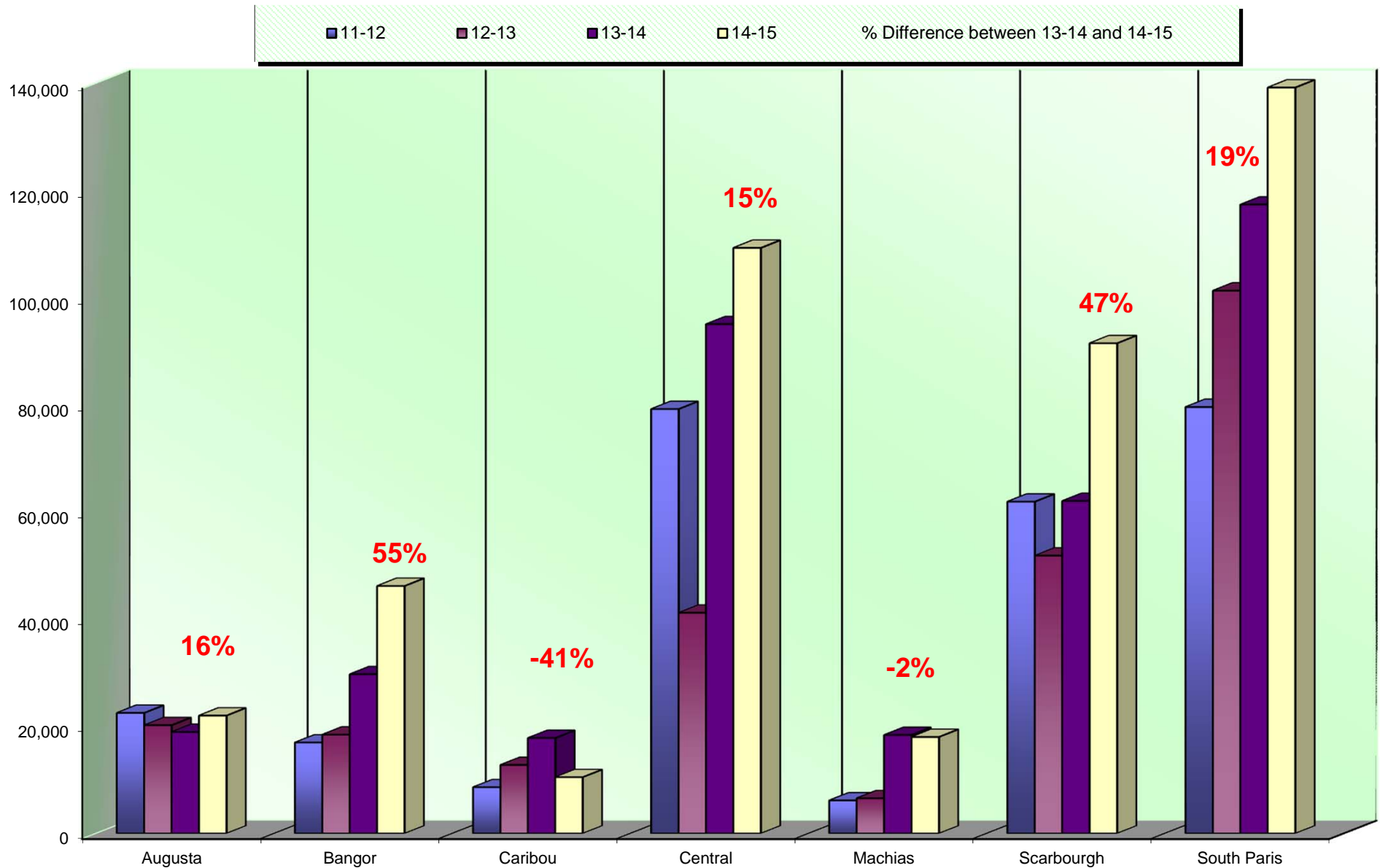


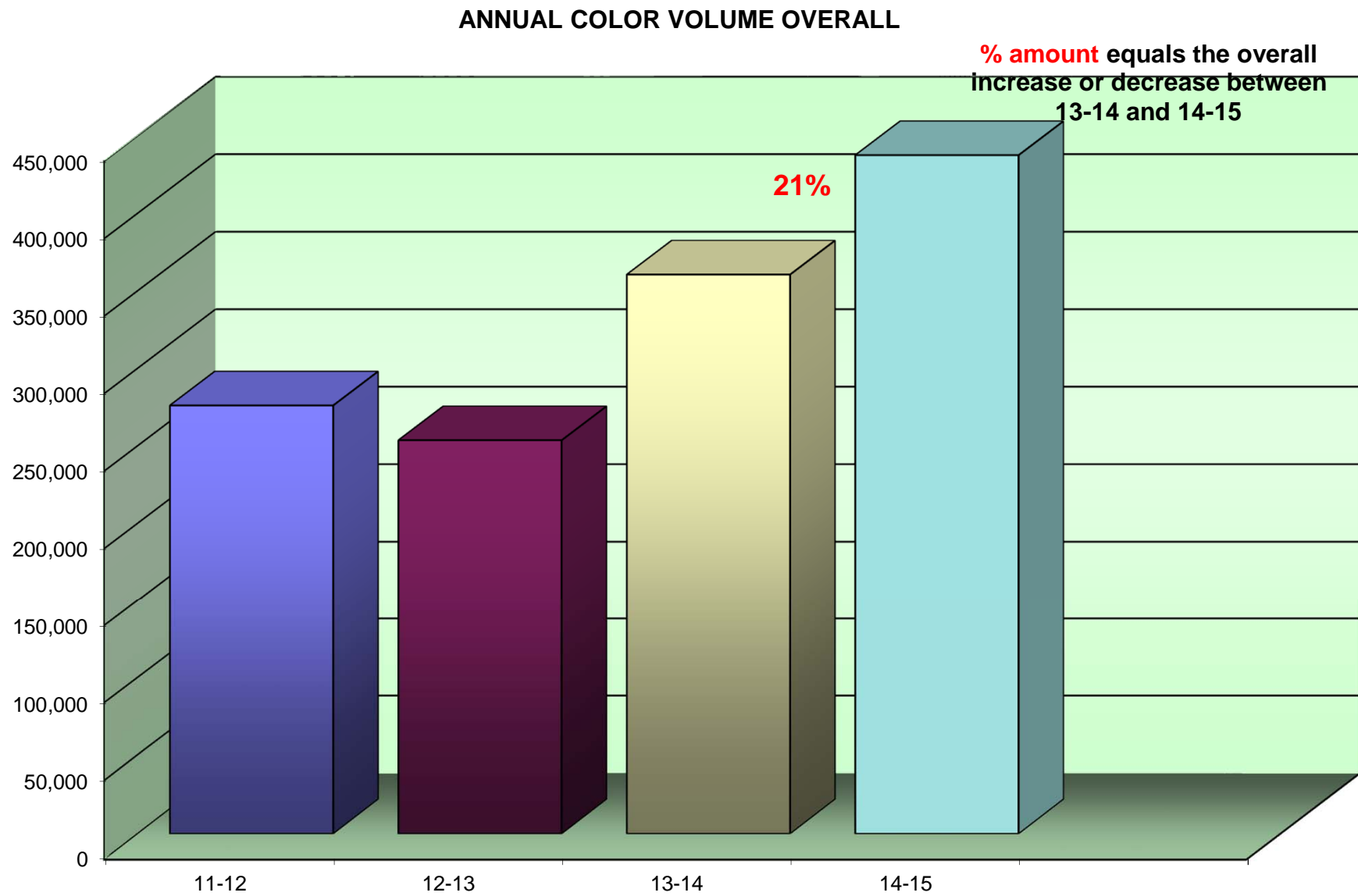
ANNUAL BLACK VOLUME OVERALL

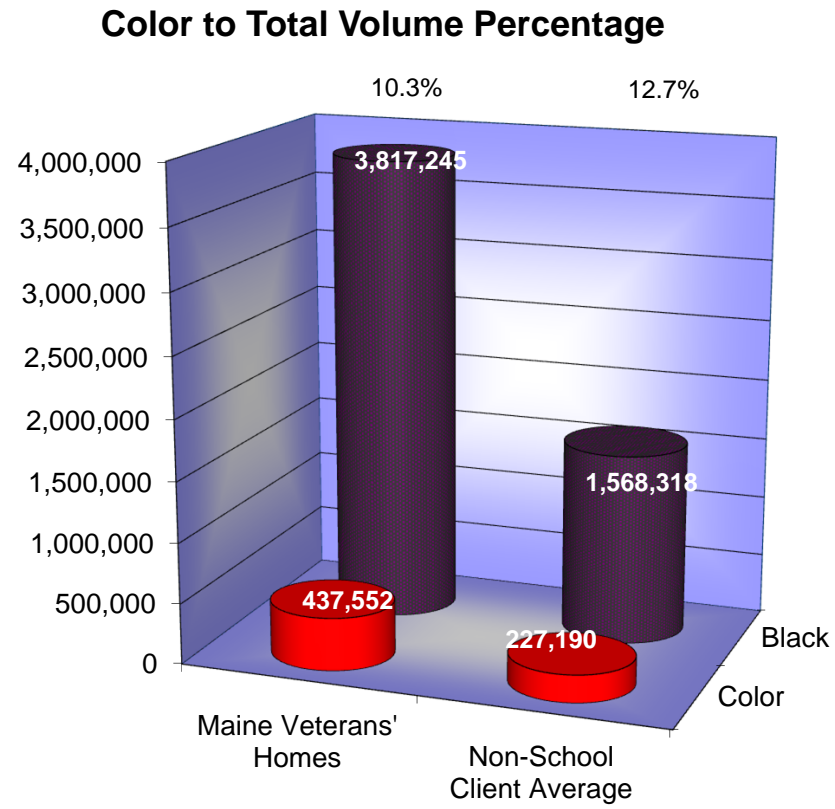
% amount equals the overall
increase or decrease between
13-14 and 14-15



ANNUAL COLOR VOLUME BY BUILDING







Usage Profile for Service & Supplies

The usage analysis shown here provides an overview of the usage of each piece of equipment currently under contract and monitored by SPC. Projected Volume comparison is based on projected volume figured on your most recent Five-Year Equipment Replacement Schedule.

<i>Make-Model / Speed</i> <i>Serial Number / Vendor ID</i> <i>Life / Intro Date</i> <i>Connectivity / Printer Exp Date</i> <i>Vendor</i>				<i>Date of Last Upgrade: 5/1/2013</i>	
	<i>7/1/2014</i> <i>Meter</i>	<i>6/30/2015</i> <i>Meter</i>	<i>2014-15</i> <i>Annual</i> <i>Volume</i>	<i>Cost/Copy</i> <i>Annual Cost</i>	<i>Recommendations</i>
MVH Augusta					
A Unit Nurse Manager					
Kyocera FS-4100DN / 45 PPM	6,920	13,251	6,331	\$0.006380	None at this time.
NUK3106221 / 3468				\$40.39	
1,000,000 / 10/2012	0	0	0	\$0.00000	
Black Network Printer				\$0.00	
Connected /					
A-COPI					
A Unit Nurses' Station					
Savin 301SPF / 31 PPM	28,726	60,773	32,047	\$0.006380	None at this time.
W912PC02555 / 3558				\$204.46	
750,000 / 06/2012	0	0	0	\$0.00000	
Black Laser MFP				\$0.00	
Connected /					
A-COPI					

<i>Make-Model / Speed Serial Number / Vendor ID Life / Intro Date Connectivity / Printer Exp Date</i>				<i>Date of Last Upgrade: 5/1/2013</i>	
<i>Vendor</i>	<i>7/1/2014 Meter</i>	<i>6/30/2015 Meter</i>	<i>2014-15 Annual Volume</i>	<i>Cost/Copy Annual Cost</i>	<i>Recommendations</i>
MVH Augusta					
Admin Hall Supply Room					
Toshiba e-Studio 2551c / 25 PPM	12,430	23,624	11,194	\$0.003980	None at this time.
C7G215597 / 3887				\$44.55	
500,000 / 05/2012	19,235	40,943	21,708	\$0.05095	
Color Photocopier				\$1,106.02	
Connected /					
A-COPI					
Toshiba e-Studio 756 / 75 PPM	156,758	287,502	130,744	\$0.003570	None at this time.
CKL212200 / 3391				\$466.76	
4,000,000 / 02/2012	0	0	0	\$0.00000	
Black Photocopier				\$0.00	
Connected /					
A-COPI					
Admissions Coordinator					
Kyocera FS-1370DN / 37 PPM	4,335	14,296	9,961	\$0.006380	None at this time.
O653X72785 / 4844				\$63.55	
750,000 / 07/2010	0	0	0	\$0.00000	
Black Network Printer				\$0.00	
Connected /					
A-COPI					

<i>Make-Model / Speed</i> <i>Serial Number / Vendor ID</i> <i>Life / Intro Date</i> <i>Connectivity / Printer Exp Date</i> <i>Vendor</i>				<i>Date of Last Upgrade: 5/1/2013</i>	
	<i>7/1/2014</i> <i>Meter</i>	<i>6/30/2015</i> <i>Meter</i>	<i>2014-15</i> <i>Annual</i> <i>Volume</i>	<i>Cost/Copy</i> <i>Annual Cost</i>	<i>Recommendations</i>
MVH Augusta					
B Unit Nurse Manager					
Kyocera FS-4100DN / 45 PPM	17,708	27,415	9,707	\$0.006380	None at this time.
NUK3206307 / 3467				\$61.93	
1,000,000 / 10/2012	0	0	0	\$0.00000	
Black Network Printer				\$0.00	
Connected /					
A-COPI					
B Unit Nurses' Station					
Savin 301SPF / 31 PPM	22,261	56,369	34,108	\$0.006380	None at this time.
W912PC02558 / 3506				\$217.61	
750,000 / 06/2012	0	0	0	\$0.00000	
Black Laser MFP				\$0.00	
Connected /					
A-COPI					
Business Office					
HP Laser Jet P4515 / 62 PPM	155,301	216,274	60,973	\$0.011480	7 years from Intro.
CNDY464697 / 3329				\$699.97	
3,000,000 / 05/2008	0	0	0	\$0.00000	
Black Network Printer				\$0.00	
Connected /					
A-COPI					

<i>Make-Model / Speed</i> <i>Serial Number / Vendor ID</i> <i>Life / Intro Date</i> <i>Connectivity / Printer Exp Date</i> <i>Vendor</i>				<i>Date of Last Upgrade: 5/1/2013</i>	
	<i>7/1/2014</i> <i>Meter</i>	<i>6/30/2015</i> <i>Meter</i>	<i>2014-15</i> <i>Annual</i> <i>Volume</i>	<i>Cost/Copy</i> <i>Annual Cost</i>	<i>Recommendations</i>
MVH Augusta					
C Unit Nurse Manager					
Kyocera FS-4100DN / 45 PPM	9,777	16,232	6,455	\$0.006380	None at this time.
NUK3206301 / 3471				\$41.18	
1,000,000 / 10/2012	0	0	0	\$0.00000	
Black Network Printer				\$0.00	
Connected /					
A-COPI					
C Unit Nurses' Station					
Savin 301SPF / 31 PPM	30,956	79,412	48,456	\$0.006380	None at this time.
W912PC02556 / 3505				\$309.15	
750,000 / 06/2012	0	0	0	\$0.00000	
Black Laser MFP				\$0.00	
Connected /					
A-COPI					
Dietary Supervisor					
Kyocera FS-4100DN / 45 PPM	4,542	9,618	5,076	\$0.006380	None at this time.
NUK2Z05617 / 3796				\$32.38	
1,000,000 / 10/2012	0	0	0	\$0.00000	
Black Network Printer				\$0.00	
Connected /					
A-COPI					

Date of Last Upgrade: 5/1/2013					
Make-Model / Speed Serial Number / Vendor ID Life / Intro Date Connectivity / Printer Exp Date Vendor	7/1/2014 Meter	6/30/2015 Meter	2014-15 Annual Volume	Cost/Copy Annual Cost	Recommendations
MVH Augusta					
Human Resources					
HP Laser Jet P4515 / 62 PPM	60,653	72,794	12,141	\$0.011480	7 years from Intro.
CNDY894994 / 3330				\$139.38	
3,000,000 / 05/2008	0	0	0	\$0.00000	
Black Network Printer				\$0.00	
Connected / A-COPI					
Medical Records					
HP Laser Jet P4515 / 62 PPM	210,795	252,579	41,784	\$0.011480	7 years from Intro.
CNDY464732 / 3331				\$479.68	
3,000,000 / 05/2008	0	0	0	\$0.00000	
Black Network Printer				\$0.00	
Connected / A-COPI					
Reception					
Toshiba e-Studio 756 / 75 PPM	223,307	451,862	228,555	\$0.003570	None at this time.
CKL212188 / 3384				\$815.94	
4,000,000 / 02/2012	0	0	0	\$0.00000	
Black Photocopier				\$0.00	
Connected / A-COPI					

<i>Make-Model / Speed</i>			<i>Date of Last Upgrade: 5/1/2013</i>		
<i>Serial Number / Vendor ID</i>					
<i>Life / Intro Date</i>					
<i>Connectivity / Printer Exp Date</i>					
<i>Vendor</i>	<i>7/1/2014 Meter</i>	<i>6/30/2015 Meter</i>	<i>2014-15 Annual Volume</i>	<i>Cost/Copy Annual Cost</i>	<i>Recommendations</i>
MVH Augusta					
Resident Care Quiet Room					
Savin 301SPF / 31 PPM	7,155	20,381	13,226	\$0.006380	None at this time.
W912PC02550 / 3504A				\$84.38	
750,000 / 06/2012	0	0	0	\$0.00000	
Black Laser MFP				\$0.00	
Connected /					
A-COPI					
Resident Care Unit					
Toshiba e-Studio 2550c / 25 PPM	56,330	67,272	10,942	\$0.003980	None at this time.
C7E210533 / 3726				\$43.55	
500,000 / 06/2012	7,901	8,470	569	\$0.05095	
Color Photocopier				\$28.99	
Connected /					
A-COPI					
Therapy B Office					
Kyocera FS-4100DN / 45 PPM	0	8,052	8,052	\$0.006380	None at this time.
NUK2X03612 / 4791				\$51.37	
1,000,000 / 10/2012	0	0	0	\$0.00000	
Black Network Printer				\$0.00	
Not Connected /					
A-COPI					
Subtotals BW			669,752	\$3,796.24	
Subtotals Color			22,277	\$1,135.01	

<i>Make-Model / Speed Serial Number / Vendor ID Life / Intro Date Connectivity / Printer Exp Date</i>				<i>Date of Last Upgrade: 5/1/2013</i>	
<i>Vendor</i>	<i>7/1/2014 Meter</i>	<i>6/30/2015 Meter</i>	<i>2014-15 Annual Volume</i>	<i>Cost/Copy Annual Cost</i>	<i>Recommendations</i>
MVH Bangor					
Activities Director					
Kyocera FS-1370DN / 37 PPM	2,891	8,188	5,297	\$0.006380	None at this time.
O653461173 / 3498				\$33.79	
750,000 / 07/2010	0	0	0	\$0.00000	
Black Network Printer				\$0.00	
Connected /					
A-COPI					
Admin MDS					
Kyocera FS-4100DN / 45 PPM	5,378	13,354	7,976	\$0.006380	None at this time.
NUK3206385 / 3493				\$50.89	
1,000,000 / 10/2012	0	0	0	\$0.00000	
Black Network Printer				\$0.00	
Connected /					
A-COPI					
Admin Office					
Toshiba e-Studio 2551c / 25 PPM	18,642	35,161	16,519	\$0.003980	None at this time.
C7G215602 / 3906				\$65.75	
500,000 / 05/2012	22,916	46,742	23,826	\$0.05095	
Color Photocopier				\$1,213.93	
Connected /					
A-COPI					

<i>Make-Model / Speed</i> <i>Serial Number / Vendor ID</i> <i>Life / Intro Date</i> <i>Connectivity / Printer Exp Date</i> <i>Vendor</i>				<i>Date of Last Upgrade: 5/1/2013</i>	
	<i>7/1/2014</i> <i>Meter</i>	<i>6/30/2015</i> <i>Meter</i>	<i>2014-15</i> <i>Annual</i> <i>Volume</i>	<i>Cost/Copy</i> <i>Annual Cost</i>	<i>Recommendations</i>
MVH Bangor					
Admissions Coordinator					
Kyocera FS-1370DN / 37 PPM	9,393	30,919	21,526	\$0.006380	None at this time.
O653X72789 / 4790				\$137.34	
750,000 / 07/2010	0	0	0	\$0.00000	
Black Network Printer				\$0.00	
Not Connected /					
A-COPI					
Assistant Director of Nursing					
Kyocera FS-1370DN / 37 PPM	5,811	9,231	3,420	\$0.006380	None at this time.
O653461172 / 3499				\$21.82	
750,000 / 07/2010	0	0	0	\$0.00000	
Black Network Printer				\$0.00	
Connected /					
A-COPI					
B Unit					
Toshiba e-Studio 556 / 55 PPM	52,547	114,514	61,967	\$0.003570	None at this time.
CGEC16699 / 3425				\$221.22	
3,000,000 / 02/2012	0	0	0	\$0.00000	
Black Photocopier				\$0.00	
Connected /					
A-COPI					

<i>Make-Model / Speed</i>			<i>Date of Last Upgrade: 5/1/2013</i>		
<i>Serial Number / Vendor ID</i>					
<i>Life / Intro Date</i>					
<i>Connectivity / Printer Exp Date</i>					
<i>Vendor</i>	<i>7/1/2014 Meter</i>	<i>6/30/2015 Meter</i>	<i>2014-15 Annual Volume</i>	<i>Cost/Copy Annual Cost</i>	<i>Recommendations</i>
MVH Bangor					
B Unit Nurse Manager					
Kyocera FS-1370DN / 37 PPM	4,190	9,464	5,274	\$0.006380	None at this time.
O653461182 / 3500				\$33.65	
750,000 / 07/2010	0	0	0	\$0.00000	
Black Network Printer				\$0.00	
Connected /					
A-COPI					
Business Office Manager					
Kyocera FS-4100DN / 45 PPM	30,805	63,972	33,167	\$0.006380	None at this time.
NUK3206312 / 3497				\$211.61	
1,000,000 / 10/2012	0	0	0	\$0.00000	
Black Network Printer				\$0.00	
Connected /					
A-COPI					
C Unit					
Toshiba e-Studio 855 / 85 PPM	374,331	562,164	187,833	\$0.003570	None at this time.
CRD210793 / 3385				\$670.56	
4,000,000 / 06/2009	0	0	0	\$0.00000	
Black Photocopier				\$0.00	
Connected /					
A-COPI					

<i>Make-Model / Speed</i>			<i>Date of Last Upgrade: 5/1/2013</i>		
<i>Serial Number / Vendor ID</i>					
<i>Life / Intro Date</i>					
<i>Connectivity / Printer Exp Date</i>					
<i>Vendor</i>	<i>7/1/2014 Meter</i>	<i>6/30/2015 Meter</i>	<i>2014-15 Annual Volume</i>	<i>Cost/Copy Annual Cost</i>	<i>Recommendations</i>
MVH Bangor					
C Unit MDS					
Kyocera FS-4100DN / 45 PPM	4,116	9,737	5,621	\$0.006380	None at this time.
NUK3206287 / 3496				\$35.86	
1,000,000 / 10/2012	0	0	0	\$0.00000	
Black Network Printer				\$0.00	
Connected /					
A-COPI					
C Unit Nurse Manager					
Kyocera FS-4100DN / 45 PPM	6,646	12,196	5,550	\$0.006380	None at this time.
NUK2801896 / 3633				\$35.41	
1,000,000 / 10/2012	0	0	0	\$0.00000	
Black Network Printer				\$0.00	
Connected /					
A-COPI					
Dietary Manager					
Kyocera FS-C5350DN / 32 PPM	33,584	42,540	8,956	\$0.006380	None at this time.
OVO2Z09109 / 3800				\$57.14	
750,000 / 08/2009	7,003	18,166	11,163	\$0.05738	
Color Network Printer				\$640.53	
Connected /					
A-COPI					

<i>Make-Model / Speed</i>			<i>Date of Last Upgrade: 5/1/2013</i>		
<i>Serial Number / Vendor ID</i>					
<i>Life / Intro Date</i>					
<i>Connectivity / Printer Exp Date</i>					
<i>Vendor</i>	<i>7/1/2014 Meter</i>	<i>6/30/2015 Meter</i>	<i>2014-15 Annual Volume</i>	<i>Cost/Copy Annual Cost</i>	<i>Recommendations</i>
MVH Bangor					
<i>Dietary Office</i>					
Kyocera FS-4100DN / 45 PPM	125,281	422,008	296,727	\$0.006380	Highly Overused! Toshiba 457 was placed in this location but no big enough. K-4100 to be placed at new location South Paris Dietary.
NUK3206380 / 3495				\$1,893.12	
1,000,000 / 10/2012	0	0	0	\$0.00000	
Black Network Printer				\$0.00	
Connected /					
A-COPI					
<i>D-Unit</i>					
Toshiba e-Studio 2551c / 25 PPM	0	51,277	51,277	\$0.003980	None at this time.
C7E210430 / 3904				\$204.08	
500,000 / 05/2012	0	10,234	10,234	\$0.05095	
Color Photocopier				\$521.42	
Connected /					
A-COPI					
<i>D-Unit - Meter Reset</i>					
Toshiba e-Studio 2551c / 25 PPM	11,469	18,420	6,951	\$0.003980	None at this time.
C7E210430a / 3904				\$27.66	
500,000 / 05/2012	11,230	12,393	1,163	\$0.05095	
Color Photocopier				\$59.25	
Not Connected /					
A-COPI					

Make-Model / Speed Serial Number / Vendor ID Life / Intro Date Connectivity / Printer Exp Date Vendor					Date of Last Upgrade: 5/1/2013	
	7/1/2014 Meter	6/30/2015 Meter	2014-15 Annual Volume	Cost/Copy Annual Cost	Recommendations	
MVH Bangor						
Human Resource Assistant						
Kyocera FS-4100DN / 45 PPM	5,243	11,547	6,304	\$0.006380	None at this time.	
NUK3206378 / 3494				\$40.22		
1,000,000 / 10/2012	0	0	0	\$0.00000		
Black Network Printer				\$0.00		
Connected / A-COPI						
Human Resources						
HP Laser Jet M1522NF MFP / 24 PPM	19,823	28,312	8,489	\$0.011480	7 years from Intro.	
CNG9C8R01Z / 3359				\$97.45		
500,000 / 04/2008	0	0	0	\$0.00000		
Black Laser MFP				\$0.00		
Connected / A-COPI						
Laundry						
Kyocera FS-1370DN / 37 PPM	7,087	15,173	8,086	\$0.006380	None at this time.	
O653461187 / 3501				\$51.59		
750,000 / 07/2010	0	0	0	\$0.00000		
Black Network Printer				\$0.00		
Connected / A-COPI						

<i>Make-Model / Speed Serial Number / Vendor ID Life / Intro Date Connectivity / Printer Exp Date</i>				<i>Date of Last Upgrade: 5/1/2013</i>	
<i>Vendor</i>	<i>7/1/2014 Meter</i>	<i>6/30/2015 Meter</i>	<i>2014-15 Annual Volume</i>	<i>Cost/Copy Annual Cost</i>	<i>Recommendations</i>
MVH Bangor					
Medical Records					
Kyocera FS-4100DN / 45 PPM	9,219	18,069	8,850	\$0.006380	None at this time.
NUK3206389 / 3492				\$56.46	
1,000,000 / 10/2012	0	0	0	\$0.00000	
Black Network Printer				\$0.00	
Connected /					
A-COPI					
Nursing Supervisor					
Kyocera FS-4300DN / 62 PPM	9,008	30,219	21,211	\$0.006380	None at this time.
NUB2900299 / 3765				\$135.33	
3,000,000 / 10/2012	0	0	0	\$0.00000	
Black Network Printer				\$0.00	
Connected /					
A-COPI					
Occupational Therapy - Kitchen					
Kyocera FS-1370DN / 37 PPM	451	820	369	\$0.006380	None at this time.
O653461178 / 3502				\$2.35	
750,000 / 07/2010	0	0	0	\$0.00000	
Black Network Printer				\$0.00	
Connected /					
A-COPI					

<i>Make-Model / Speed</i> <i>Serial Number / Vendor ID</i> <i>Life / Intro Date</i> <i>Connectivity / Printer Exp Date</i> <i>Vendor</i>				<i>Date of Last Upgrade: 5/1/2013</i>	
	<i>7/1/2014</i> <i>Meter</i>	<i>6/30/2015</i> <i>Meter</i>	<i>2014-15</i> <i>Annual</i> <i>Volume</i>	<i>Cost/Copy</i> <i>Annual Cost</i>	<i>Recommendations</i>
MVH Bangor					
Reception					
Toshiba e-Studio 856 / 85 PPM	278,329	602,169	323,840	\$0.003570	None at this time.
SRH290239 / 3386				\$1,156.11	
4,000,000 / 02/2012	0	0	0	\$0.00000	
Black Photocopier				\$0.00	
Connected /					
A-COPI					
Resident Care					
Ricoh MP5000B / 50 PPM	173,591	224,292	50,701	\$0.004590	7 years from Intro.
M5605400282 / 3370				\$232.72	
2,000,000 / 02/2008	0	0	0	\$0.00000	
Black Photocopier				\$0.00	
Connected /					
A-COPI					
Resident Care Activities Office					
Kyocera FS-1370DN / 37 PPM	6,510	12,907	6,397	\$0.006380	None at this time.
O653461183 / 3503				\$40.81	
750,000 / 07/2010	0	0	0	\$0.00000	
Black Network Printer				\$0.00	
Connected /					
A-COPI					

<i>Make-Model / Speed</i>					<i>Date of Last Upgrade: 5/1/2013</i>		
<i>Serial Number / Vendor ID</i>							
<i>Life / Intro Date</i>			<i>2014-15</i>				
<i>Connectivity / Printer Exp Date</i>			<i>Annual</i>				
<i>Vendor</i>			<i>Volume</i>				
<i>7/1/2014</i>			<i>Cost/Copy</i>				
<i>Meter</i>			<i>Annual Cost</i>				
<i>6/30/2015</i>			<i>Recommendations</i>				
<i>Meter</i>							
MVH Bangor							
Therapy							
Toshiba e-Studio 556 / 55 PPM			142,883	226,543	83,660	\$0.004590	None at this time.
CGI213684 / 3637						\$384.00	
3,000,000 / 02/2012			0	0	0	\$0.00000	
Black Photocopier						\$0.00	
Connected /							
A-COPI							
Subtotals BW			1,235,968			\$5,896.94	
Subtotals Color			46,386			\$2,435.14	

<i>Make-Model / Speed</i> <i>Serial Number / Vendor ID</i> <i>Life / Intro Date</i> <i>Connectivity / Printer Exp Date</i> <i>Vendor</i>				<i>Date of Last Upgrade: 5/1/2013</i>	
	<i>7/1/2014</i> <i>Meter</i>	<i>6/30/2015</i> <i>Meter</i>	<i>2014-15</i> <i>Annual</i> <i>Volume</i>	<i>Cost/Copy</i> <i>Annual Cost</i>	<i>Recommendations</i>
MVH Caribou					
Activities/SDC					
Kyocera FS-4100DN / 45 PPM	7,090	11,588	4,498	\$0.007250	None at this time.
NUK3106226 / 4618				\$32.61	
1,000,000 / 10/2012	0	0	0	\$0.00000	
Black Network Printer				\$0.00	
Connected /					
LEVESQUE					
Administrator's Office					
Kyocera FS-1370DN / 37 PPM	2,007	4,781	2,774	\$0.013750	None at this time.
O653461174 / 4612				\$38.14	
750,000 / 07/2010	0	0	0	\$0.00000	
Black Network Printer				\$0.00	
Connected /					
LEVESQUE					
Admissions Coordinator					
Kyocera FS-1370DN / 37 PPM	3,366	3,615	249	\$0.013750	None at this time.
O653461192 / 4617				\$3.42	
750,000 / 07/2010	0	0	0	\$0.00000	
Black Network Printer				\$0.00	
Connected /					
LEVESQUE					

<i>Make-Model / Speed Serial Number / Vendor ID Life / Intro Date Connectivity / Printer Exp Date</i>				<i>Date of Last Upgrade: 5/1/2013</i>	
<i>Vendor</i>	<i>7/1/2014 Meter</i>	<i>6/30/2015 Meter</i>	<i>2014-15 Annual Volume</i>	<i>Cost/Copy Annual Cost</i>	<i>Recommendations</i>
MVH Caribou					
Clinical Coordinator					
Kyocera FS-1370DN / 37 PPM	6,598	19,774	13,176	\$0.013750	None at this time.
O653461190 / 4615				\$181.17	
750,000 / 07/2010	0	0	0	\$0.00000	
Black Network Printer				\$0.00	
Connected /					
LEVESQUE					
Director of Nursing					
Kyocera FS-1370DN / 37 PPM	452	4,239	3,787	\$0.013750	None at this time.
O653461184 / 4610				\$52.07	
750,000 / 07/2010	0	0	0	\$0.00000	
Black Network Printer				\$0.00	
Connected /					
LEVESQUE					
Human Resources					
Kyocera FS-4100DN / 45 PPM	13,198	24,954	11,756	\$0.007250	None at this time.
NUK3106215 / 4611				\$85.23	
1,000,000 / 10/2012	0	0	0	\$0.00000	
Black Network Printer				\$0.00	
Connected /					
LEVESQUE					

Date of Last Upgrade: 5/1/2013					
Make-Model / Speed Serial Number / Vendor ID Life / Intro Date Connectivity / Printer Exp Date Vendor	7/1/2014 Meter	6/30/2015 Meter	2014-15 Annual Volume	Cost/Copy Annual Cost	Recommendations
MVH Caribou					
MDS Coordinator					
HP Laser Jet P4015N / 52 PPM	79,369	84,609	5,240	\$0.019250	7 years from Intro.
CNDY398280 / 4620				\$100.87	
3,000,000 / 05/2008	0	0	0	\$0.00000	
Black Network Printer				\$0.00	
Connected / LEVESQUE					
Nurse Manager					
Kyocera FS-4100DN / 45 PPM	1,725	2,030	305	\$0.007250	None at this time.
NUK3106223 / 4613				\$2.21	
1,000,000 / 10/2012	0	0	0	\$0.00000	
Black Network Printer				\$0.00	
Connected / LEVESQUE					
PT/OT Office					
Savin 9250 / 50 PPM	356,889	433,931	77,042	\$0.009500	None at this time.
V8005500006 / 3696				\$731.90	
2,000,000 / 01/2010	0	0	0	\$0.00000	
Black Photocopier				\$0.00	
Connected / LEVESQUE					

<i>Make-Model / Speed</i> <i>Serial Number / Vendor ID</i> <i>Life / Intro Date</i> <i>Connectivity / Printer Exp Date</i> <i>Vendor</i>				<i>Date of Last Upgrade: 5/1/2013</i>	
	<i>7/1/2014 Meter</i>	<i>6/30/2015 Meter</i>	<i>2014-15 Annual Volume</i>	<i>Cost/Copy Annual Cost</i>	<i>Recommendations</i>
MVH Caribou					
RAM Printer					
Kyocera FS-4100DN / 45 PPM	9,925	15,570	5,645	\$0.007250	None at this time.
NUK3206293 / 4609				\$40.93	
1,000,000 / 10/2012	0	0	0	\$0.00000	
Black Network Printer				\$0.00	
Connected /					
LEVESQUE					
Reception					
Kyocera FS-C5250 / 28 PPM	3,397	5,946	2,549	\$0.013750	None at this time.
O553407440 / 4608				\$35.05	
500,000 / 12/2010	8,096	18,766	10,670	\$0.07725	
Color Network Printer				\$824.26	
Connected /					
LEVESQUE					
Savin 9250 / 50 PPM	437,066	489,420	52,354	\$0.009500	None at this time.
V8005401252 / 3739				\$497.36	
2,000,000 / 01/2010	0	0	0	\$0.00000	
Black Photocopier				\$0.00	
Connected /					
LEVESQUE					

<i>Make-Model / Speed</i> <i>Serial Number / Vendor ID</i> <i>Life / Intro Date</i> <i>Connectivity / Printer Exp Date</i> <i>Vendor</i>				<i>Date of Last Upgrade: 5/1/2013</i>	
	<i>7/1/2014</i> <i>Meter</i>	<i>6/30/2015</i> <i>Meter</i>	<i>2014-15</i> <i>Annual</i> <i>Volume</i>	<i>Cost/Copy</i> <i>Annual Cost</i>	<i>Recommendations</i>
MVH Caribou					
Resident Care Unit					
Kyocera FS-4100DN / 45 PPM	7,645	12,325	4,680	\$0.007250	None at this time.
NUK3106224 / 4616				\$33.93	
1,000,000 / 10/2012	0	0	0	\$0.00000	
Black Network Printer				\$0.00	
Connected /					
LEVESQUE					
Ricoh MP6001 / 60 PPM	678,092	713,212	35,120	\$0.009500	None at this time.
V6905600278 / 4619				\$333.64	
3,000,000 / 06/2009	0	0	0	\$0.00000	
Black Photocopier				\$0.00	
Connected /					
LEVESQUE					
Social Services					
Savin SP4310n / 37 PPM	0	9,720	9,720	\$0.012500	None at this time.
T1139611736 / 4607				\$121.50	
750,000 / 09/2011	0	0	0	\$0.00000	
Black Network Printer				\$0.00	
Not Connected /					
LEVESQUE					
Subtotals BW			228,895	\$2,290.04	
Subtotals Color			10,670	\$824.26	

<i>Make-Model / Speed</i> <i>Serial Number / Vendor ID</i> <i>Life / Intro Date</i> <i>Connectivity / Printer Exp Date</i> <i>Vendor</i>				<i>Date of Last Upgrade: 5/1/2013</i>	
	<i>7/1/2014</i> <i>Meter</i>	<i>6/30/2015</i> <i>Meter</i>	<i>2014-15</i> <i>Annual</i> <i>Volume</i>	<i>Cost/Copy</i> <i>Annual Cost</i>	<i>Recommendations</i>
MVH Central					
Accounts Payable					
Kyocera FS-4100DN / 45 PPM	21,323	41,585	20,262	\$0.006380	None at this time.
NUK2801869 / 3631				\$129.27	
1,000,000 / 10/2012	0	0	0	\$0.00000	
Black Network Printer				\$0.00	
Connected /					
A-COPI					
Billers					
Kyocera FS-1370DN / 37 PPM	616	1,930	1,314	\$0.006380	None at this time.
O653461186 / 3474				\$8.38	
750,000 / 07/2010	0	0	0	\$0.00000	
Black Network Printer				\$0.00	
Connected /					
A-COPI					
Compliance Director					
Kyocera FS-1370DN / 37 PPM	1,910	8,644	6,734	\$0.006380	None at this time.
O653X72788 / 4856				\$42.96	
750,000 / 07/2010	0	0	0	\$0.00000	
Black Network Printer				\$0.00	
Connected /					
A-COPI					

<i>Make-Model / Speed</i> <i>Serial Number / Vendor ID</i> <i>Life / Intro Date</i> <i>Connectivity / Printer Exp Date</i> <i>Vendor</i>				<i>Date of Last Upgrade: 5/1/2013</i>	
	<i>7/1/2014 Meter</i>	<i>6/30/2015 Meter</i>	<i>2014-15 Annual Volume</i>	<i>Cost/Copy Annual Cost</i>	<i>Recommendations</i>
MVH Central					
Controller					
Kyocera FS-4100DN / 45 PPM	17,971	33,669	15,698	\$0.006380	None at this time.
NUK3106219 / 3438				\$100.15	
1,000,000 / 10/2012	0	0	0	\$0.00000	
Black Network Printer				\$0.00	
Connected /					
A-COPI					
COO Office					
Kyocera FS-4100DN / 45 PPM	1,983	3,832	1,849	\$0.006380	None at this time.
NUK2Z05682 / 3804				\$11.80	
1,000,000 / 10/2012	0	0	0	\$0.00000	
Black Network Printer				\$0.00	
Connected /					
A-COPI					
Executive Assistant					
Kyocera P2135DN / 37 PPM	0	2,394	2,394	\$0.006380	None at this time.
LVK4X18968 / 5447				\$15.27	
750,000 / 03/2014	0	0	0	\$0.00000	
Black Network Printer				\$0.00	
Not Connected /					
A-COPI					

<i>Make-Model / Speed</i> <i>Serial Number / Vendor ID</i> <i>Life / Intro Date</i> <i>Connectivity / Printer Exp Date</i> <i>Vendor</i>				<i>Date of Last Upgrade: 5/1/2013</i>	
	<i>7/1/2014</i> <i>Meter</i>	<i>6/30/2015</i> <i>Meter</i>	<i>2014-15</i> <i>Annual</i> <i>Volume</i>	<i>Cost/Copy</i> <i>Annual Cost</i>	<i>Recommendations</i>
MVH Central					
Finance					
Toshiba e-Studio 6540C / 65 PPM	110,090	231,038	120,948	\$0.003980	None at this time.
CCE312943 / 3423				\$481.37	
3,000,000 / 05/2011	32,060	90,813	58,753	\$0.05095	
Color Photocopier				\$2,993.47	
Connected /					
A-COPI					
Human Resources					
Savin 301SPF / 31 PPM	18,403	32,656	14,253	\$0.006380	None at this time.
W912P700456 / 3692				\$90.93	
750,000 / 06/2012	0	0	0	\$0.00000	
Black Laser MFP				\$0.00	
Connected /					
A-COPI					
Savin MP301SPF / 31 PPM	0	12,734	12,734	\$0.006380	None at this time.
W914PB05067 / 5393				\$81.24	
750,000 / 06/2012	0	0	0	\$0.00000	
Black Laser MFP				\$0.00	
Not Connected /					
A-COPI					

<i>Make-Model / Speed</i>			<i>Date of Last Upgrade: 5/1/2013</i>		
<i>Serial Number / Vendor ID</i>					
<i>Life / Intro Date</i>					
<i>Connectivity / Printer Exp Date</i>					
<i>Vendor</i>	<i>7/1/2014 Meter</i>	<i>6/30/2015 Meter</i>	<i>2014-15 Annual Volume</i>	<i>Cost/Copy Annual Cost</i>	<i>Recommendations</i>
MVH Central					
IT Copier					
Toshiba e-Studio 555 / 55 PPM	39,875	87,596	47,721	\$0.003570	None at this time.
CGEC16700 / 3427				\$170.36	
3,000,000 / 06/2009	0	0	0	\$0.00000	
Black Photocopier				\$0.00	
Connected /					
A-COPI					
IT Printer					
HP Laser Jet P3010 / 40 PPM	63,132	69,184	6,052	\$0.011480	7 years from Intro.
VNBCCDM2ZV / 3317				\$69.48	
1,000,000 / 09/2008	0	0	0	\$0.00000	
Black Network Printer				\$0.00	
Not Connected /					
A-COPI					
Mail Room					
Toshiba e-Studio 5540c / 55 PPM	50,828	104,025	53,197	\$0.003980	None at this time.
CBA319739 / 3817				\$211.72	
3,000,000 / 05/2011	52,662	96,904	44,242	\$0.05095	
Color Photocopier				\$2,254.13	
Connected /					
A-COPI					

Date of Last Upgrade: 5/1/2013					
Make-Model / Speed Serial Number / Vendor ID Life / Intro Date Connectivity / Printer Exp Date Vendor	7/1/2014 Meter	6/30/2015 Meter	2014-15 Annual Volume	Cost/Copy Annual Cost	Recommendations
MVH Central					
MDS Coordinator					
Kyocera FS-1370DN / 37 PPM	158	1,133	975	\$0.006380	None at this time.
O653X72782 / 4855				\$6.22	
750,000 / 07/2010	0	0	0	\$0.00000	
Black Network Printer				\$0.00	
Connected / A-COPI					
Payroll Manager					
Kyocera FS-4100DN / 45 PPM	45,186	88,359	43,173	\$0.006380	None at this time.
NUK3106225 / 3432				\$275.44	
1,000,000 / 10/2012	0	0	0	\$0.00000	
Black Network Printer				\$0.00	
Connected / A-COPI					
Pharmacy Business Office					
Toshiba e-Studio 556 / 55 PPM	104,976	207,994	103,018	\$0.003570	None at this time.
CGEC16719 / 3420				\$367.77	
3,000,000 / 02/2012	0	0	0	\$0.00000	
Black Photocopier				\$0.00	
Connected / A-COPI					

<i>Make-Model / Speed</i>			<i>Date of Last Upgrade: 5/1/2013</i>		
<i>Serial Number / Vendor ID</i>					
<i>Life / Intro Date</i>					
<i>Connectivity / Printer Exp Date</i>					
<i>Vendor</i>	<i>7/1/2014 Meter</i>	<i>6/30/2015 Meter</i>	<i>2014-15 Annual Volume</i>	<i>Cost/Copy Annual Cost</i>	<i>Recommendations</i>
MVH Central					
Pharmacy Quality Assurance					
Savin 301SPF / 31 PPM	41,960	64,143	22,183	\$0.006380	None at this time.
W912P601321 / 3619				\$141.53	
750,000 / 06/2012	0	0	0	\$0.00000	
Black Laser MFP				\$0.00	
Connected /					
A-COPI					
Pharmacy Rx2 QA					
Savin MP301SPF / 31 PPM	0	5,189	5,189	\$0.006380	None at this time.
W914PC01499 / 5446				\$33.11	
750,000 / 06/2012	0	0	0	\$0.00000	
Black Laser MFP				\$0.00	
Not Connected /					
A-COPI					
Purchasing					
HP Color Laser Jet CM1312nfi / 12 PPM	6,323	8,192	1,869	\$0.011480	7 years from Intro.
CNF8B1XJJM / 3339				\$21.46	
150,000 / 06/2008	10,408	16,691	6,283	\$0.11475	
Color Network Printer				\$720.97	
Connected /					
A-COPI					

Make-Model / Speed Serial Number / Vendor ID Life / Intro Date Connectivity / Printer Exp Date Vendor				Date of Last Upgrade: 5/1/2013	
	7/1/2014 Meter	6/30/2015 Meter	2014-15 Annual Volume	Cost/Copy Annual Cost	Recommendations
MVH Central					
Reception					
Kyocera FS-1370DN / 37 PPM	0	767	767	\$0.006380	None at this time.
LVK4X18982 / 5448				\$4.89	
750,000 / 07/2010	0	0	0	\$0.00000	
Black Network Printer				\$0.00	
Not Connected /					
A-COPI					
Staff Accountant					
Kyocera FS-4100DN / 45 PPM	16,902	33,987	17,085	\$0.006380	None at this time.
NUK3106216 / 3442				\$109.00	
1,000,000 / 10/2012	0	0	0	\$0.00000	
Black Network Printer				\$0.00	
Connected /					
A-COPI					
Subtotals BW			497,415	\$2,372.38	
Subtotals Color			109,278	\$5,968.57	

Date of Last Upgrade: 5/1/2013					
Make-Model / Speed Serial Number / Vendor ID Life / Intro Date Connectivity / Printer Exp Date Vendor	7/1/2014 Meter	6/30/2015 Meter	2014-15 Annual Volume	Cost/Copy Annual Cost	Recommendations
MVH Machias					
Administration					
Kyocera FS-1370DN / 37 PPM O653461179 / 3508A 750,000 / 07/2010 Black Network Printer Connected / A-COPI	2,283 0	3,508 0	1,225 0	\$0.006380 \$7.82 \$0.00000 \$0.00	None at this time.
Toshiba e-Studio 2551c / 25 PPM C7G215612 / 3683 500,000 / 05/2012 Color Photocopier Connected / A-COPI	3,383 18,709	13,646 37,000	10,263 18,291	\$0.003980 \$40.85 \$0.05095 \$931.93	None at this time.
DNS					
Kyocera FS-1370DN / 37 PPM O653461171 / 3482 750,000 / 07/2010 Black Network Printer Connected / A-COPI	6,104 0	11,678 0	5,574 0	\$0.006380 \$35.56 \$0.00000 \$0.00	None at this time.

<i>Make-Model / Speed</i> <i>Serial Number / Vendor ID</i> <i>Life / Intro Date</i> <i>Connectivity / Printer Exp Date</i> <i>Vendor</i>				<i>Date of Last Upgrade: 5/1/2013</i>	
	<i>7/1/2014</i> <i>Meter</i>	<i>6/30/2015</i> <i>Meter</i>	<i>2014-15</i> <i>Annual</i> <i>Volume</i>	<i>Cost/Copy</i> <i>Annual Cost</i>	<i>Recommendations</i>
MVH Machias					
ECS Emergency Printer					
Kyocera FS-4100DN / 45 PPM	4,177	10,031	5,854	\$0.007250	None at this time.
NUK3206296 / 4614				\$42.44	
1,000,000 / 10/2012	0	0	0	\$0.00000	
Black Network Printer				\$0.00	
Connected /					
LEVESQUE					
Kyocera FS-4100DN / 45 PPM	2,756	9,782	7,026	\$0.006380	None at this time.
NUK3236305 / 3484				\$44.83	
1,000,000 / 10/2012	0	0	0	\$0.00000	
Black Network Printer				\$0.00	
Connected /					
A-COPI					
Human Resources					
Kyocera FS-4100DN / 45 PPM	14,540	31,641	17,101	\$0.006380	None at this time.
NUK3206554 / 3441				\$109.10	
1,000,000 / 10/2012	0	0	0	\$0.00000	
Black Network Printer				\$0.00	
Connected /					
A-COPI					

Make-Model / Speed Serial Number / Vendor ID Life / Intro Date Connectivity / Printer Exp Date Vendor					Date of Last Upgrade: 5/1/2013	
	7/1/2014 Meter	6/30/2015 Meter	2014-15 Annual Volume	Cost/Copy Annual Cost	Recommendations	
MVH Machias						
Machias Copier						
Ricoh MP6001 / 60 PPM	525,100	597,970	72,870	\$0.004590	None at this time.	
V6905600166 / 3401				\$334.47		
3,000,000 / 06/2009	0	0	0	\$0.00000		
Black Photocopier				\$0.00		
Connected /						
A-COPI						
Storage - Hot Swap						
HP Laser Jet P2035 / 30 PPM	2,369	2,369	0	\$0.011480	7 years from Intro.	
CNB9X80321 / 3375				\$0.00		
750,000 / 11/2008	0	0	0	\$0.00000		
Black Network Printer				\$0.00		
Not Connected /						
A-COPI						
Kyocera FS-4100DN / 45 PPM	850	850	0	\$0.006380	None at this time.	
NUK3206297 / 3464A				\$0.00		
1,000,000 / 10/2012	0	0	0	\$0.00000		
Black Network Printer				\$0.00		
Connected /						
A-COPI						

<i>Make-Model / Speed</i> <i>Serial Number / Vendor ID</i> <i>Life / Intro Date</i> <i>Connectivity / Printer Exp Date</i> <i>Vendor</i>					<i>Date of Last Upgrade: 5/1/2013</i>	
	<i>7/1/2014</i> <i>Meter</i>	<i>6/30/2015</i> <i>Meter</i>	<i>2014-15</i> <i>Annual</i> <i>Volume</i>	<i>Cost/Copy</i> <i>Annual Cost</i>	<i>Recommendations</i>	
MVH Machias						
West Nurses' Station						
Savin 301SPF / 31 PPM	15,807	32,600	16,793	\$0.006380	None at this time.	
W912PC02554 / 3946				\$107.14		
750,000 / 06/2012	0	0	0	\$0.00000		
Black Laser MFP				\$0.00		
Connected /						
A-COPI						
Subtotals BW			136,706	\$722.21		
Subtotals Color			18,291	\$931.93		

<i>Make-Model / Speed Serial Number / Vendor ID Life / Intro Date Connectivity / Printer Exp Date</i>				<i>Date of Last Upgrade: 5/1/2013</i>	
<i>Vendor</i>	<i>7/1/2014 Meter</i>	<i>6/30/2015 Meter</i>	<i>2014-15 Annual Volume</i>	<i>Cost/Copy Annual Cost</i>	<i>Recommendations</i>
MVH Scarborough					
A Unit Nurses' Station					
Savin 301SPF / 31 PPM	34,692	76,570	41,878	\$0.006380	None at this time.
W913P107015 / 3905				\$267.18	
750,000 / 06/2012	0	0	0	\$0.00000	
Black Laser MFP				\$0.00	
Connected /					
A-COPI					
Activities Director					
Kyocera FS-C5250 / 28 PPM	603	1,558	955	\$0.006380	None at this time.
O553808538 / 4757				\$6.09	
500,000 / 12/2010	3,929	12,009	8,080	\$0.05738	
Color Network Printer				\$463.63	
Connected /					
A-COPI					
Admin Hall					
Toshiba e-Studio 756 / 75 PPM	140,009	268,931	128,922	\$0.003570	None at this time.
CKL212073 / 3383				\$460.25	
4,000,000 / 02/2012	0	0	0	\$0.00000	
Black Photocopier				\$0.00	
Connected /					
A-COPI					

<i>Make-Model / Speed</i>			<i>Date of Last Upgrade: 5/1/2013</i>		
<i>Serial Number / Vendor ID</i>					
<i>Life / Intro Date</i>					
<i>Connectivity / Printer Exp Date</i>					
<i>Vendor</i>	<i>7/1/2014 Meter</i>	<i>6/30/2015 Meter</i>	<i>2014-15 Annual Volume</i>	<i>Cost/Copy Annual Cost</i>	<i>Recommendations</i>
MVH Scarborough					
Admissions					
Savin 301SPF / 31 PPM	33,594	71,166	37,572	\$0.006380	None at this time.
W912P700470 / 3842				\$239.71	
750,000 / 06/2012	0	0	0	\$0.00000	
Black Laser MFP				\$0.00	
Not Connected /					
A-COPI					
B Unit Nurse Manager					
Kyocera FS-1370DN / 37 PPM	9,520	12,901	3,381	\$0.006380	None at this time.
O653461181 / 3485				\$21.57	
750,000 / 07/2010	0	0	0	\$0.00000	
Black Network Printer				\$0.00	
Connected /					
A-COPI					
B Unit Nurses' Station					
Savin 301SPF / 31 PPM	40,512	57,636	17,124	\$0.006380	None at this time.
W912PC02552 / 3561				\$109.25	
750,000 / 06/2012	0	0	0	\$0.00000	
Black Laser MFP				\$0.00	
Connected /					
A-COPI					

<i>Make-Model / Speed</i>			<i>Date of Last Upgrade: 5/1/2013</i>		
<i>Serial Number / Vendor ID</i>					
<i>Life / Intro Date</i>					
<i>Connectivity / Printer Exp Date</i>					
<i>Vendor</i>	<i>7/1/2014 Meter</i>	<i>6/30/2015 Meter</i>	<i>2014-15 Annual Volume</i>	<i>Cost/Copy Annual Cost</i>	<i>Recommendations</i>
MVH Scarborough					
C Unit Nurses' Station					
Savin 301SPF / 31 PPM	26,967	59,533	32,566	\$0.006380	None at this time.
W912PC02549 / 3560				\$207.77	
750,000 / 06/2012	0	0	0	\$0.00000	
Black Laser MFP				\$0.00	
Connected /					
A-COPI					
Classroom					
Toshiba e-Studio 2551c / 25 PPM	10,358	19,085	8,727	\$0.003980	None at this time.
C7E210476 / 3907				\$34.73	
500,000 / 05/2012	8,208	22,680	14,472	\$0.05095	
Color Photocopier				\$737.35	
Connected /					
A-COPI					
Dietary Office					
Kyocera FS-4100DN / 45 PPM	21,757	28,664	6,907	\$0.006380	None at this time.
NUK3206384 / 3491				\$44.07	
1,000,000 / 10/2012	0	0	0	\$0.00000	
Black Network Printer				\$0.00	
Connected /					
A-COPI					

Make-Model / Speed Serial Number / Vendor ID Life / Intro Date Connectivity / Printer Exp Date Vendor					Date of Last Upgrade: 5/1/2013	
	7/1/2014 Meter	6/30/2015 Meter	2014-15 Annual Volume	Cost/Copy Annual Cost	Recommendations	
MVH Scarborough						
Human Resources						
HP Laser Jet M1522NF MFP / 24 PPM	14,600	20,913	6,313	\$0.011480	7 years from Intro.	
CNC983P1G8 / 3327				\$72.47		
500,000 / 04/2008	0	0	0	\$0.00000		
Black Laser MFP				\$0.00		
Not Connected / A-COPI						
Lead MDS Coordinator						
Kyocera FS-4100DN / 45 PPM	4,283	8,695	4,412	\$0.006380	None at this time.	
NUK3206303 / 3481				\$28.15		
1,000,000 / 10/2012	0	0	0	\$0.00000		
Black Network Printer				\$0.00		
Connected / A-COPI						
Maintenance Supervisor						
Kyocera FS-1370DN / 37 PPM	5,156	11,527	6,371	\$0.006380	None at this time.	
O653461176 / 3483				\$40.65		
750,000 / 07/2010	0	0	0	\$0.00000		
Black Network Printer				\$0.00		
Connected / A-COPI						

<i>Make-Model / Speed</i> <i>Serial Number / Vendor ID</i> <i>Life / Intro Date</i> <i>Connectivity / Printer Exp Date</i> <i>Vendor</i>					<i>Date of Last Upgrade: 5/1/2013</i>	
	<i>7/1/2014</i> <i>Meter</i>	<i>6/30/2015</i> <i>Meter</i>	<i>2014-15</i> <i>Annual</i> <i>Volume</i>	<i>Cost/Copy</i> <i>Annual Cost</i>	<i>Recommendations</i>	
MVH Scarborough						
Medical Records						
Kyocera FS-4100DN / 45 PPM	33,223	65,064	31,841	\$0.006380	None at this time.	
NUK3206382 / 3488				\$203.15		
1,000,000 / 10/2012	0	0	0	\$0.00000		
Black Network Printer				\$0.00		
Connected /						
A-COPI						
Nursing Supervisor						
Kyocera FS-4100DN / 45 PPM	20,670	38,419	17,749	\$0.006380	None at this time.	
NUK3206386 / 3465				\$113.24		
1,000,000 / 10/2012	0	0	0	\$0.00000		
Black Network Printer				\$0.00		
Connected /						
A-COPI						

<i>Make-Model / Speed Serial Number / Vendor ID Life / Intro Date Connectivity / Printer Exp Date</i>				<i>Date of Last Upgrade: 5/1/2013</i>	
<i>Vendor</i>	<i>7/1/2014 Meter</i>	<i>6/30/2015 Meter</i>	<i>2014-15 Annual Volume</i>	<i>Cost/Copy Annual Cost</i>	<i>Recommendations</i>
MVH Scarborough					
Reception					
Toshiba e-Studio 2551c / 25 PPM	21,706	42,967	21,261	\$0.003980	None at this time.
C7G215618 / 3736				\$84.62	
500,000 / 05/2012	51,511	120,497	68,986	\$0.05095	
Color Photocopier				\$3,514.84	
Connected /					
A-COPI					
Toshiba e-Studio 756 / 75 PPM	135,338	246,108	110,770	\$0.003570	None at this time.
CKL212192 / 3392				\$395.45	
4,000,000 / 02/2012	0	0	0	\$0.00000	
Black Photocopier				\$0.00	
Connected /					
A-COPI					
Resident Account Manager					
Kyocera FS-4100DN / 45 PPM	29,778	59,171	29,393	\$0.006380	None at this time.
NUK3206387 / 3487				\$187.53	
1,000,000 / 10/2012	0	0	0	\$0.00000	
Black Network Printer				\$0.00	
Connected /					
A-COPI					

<i>Make-Model / Speed</i>	<i>Date of Last Upgrade: 5/1/2013</i>				
<i>Serial Number / Vendor ID</i>					
<i>Life / Intro Date</i>			<i>2014-15</i>		
<i>Connectivity / Printer Exp Date</i>	<i>7/1/2014</i>	<i>6/30/2015</i>	<i>Annual</i>	<i>Cost/Copy</i>	
<i>Vendor</i>	<i>Meter</i>	<i>Meter</i>	<i>Volume</i>	<i>Annual Cost</i>	<i>Recommendations</i>
MVH Scarborough					
Resident Care					
Kyocera FS-1370DN / 37 PPM	3,548	6,343	2,795	\$0.006380	None at this time.
O653461177 / 3462				\$17.83	
750,000 / 07/2010	0	0	0	\$0.00000	
Black Network Printer				\$0.00	
Connected /					
A-COPI					
Ricoh MP6001 / 60 PPM	553,192	591,368	38,176	\$0.004590	None at this time.
V6905600312 / 3460				\$175.23	
3,000,000 / 06/2009	0	0	0	\$0.00000	
Black Photocopier				\$0.00	
Connected /					
A-COPI					
Staffing Coordinator					
Kyocera FS-4100DN / 45 PPM	14,121	22,335	8,214	\$0.006380	None at this time.
NUK3206284 / 3461				\$52.41	
1,000,000 / 10/2012	0	0	0	\$0.00000	
Black Network Printer				\$0.00	
Connected /					
A-COPI					

Make-Model / Speed Serial Number / Vendor ID Life / Intro Date Connectivity / Printer Exp Date Vendor					Date of Last Upgrade: 5/1/2013	
	7/1/2014 Meter	6/30/2015 Meter	2014-15 Annual Volume	Cost/Copy Annual Cost	Recommendations	
MVH Scarborough						
Storage - Hot Swap						
Kyocera FS-4100DN / 45 PPM	42	42	0	\$0.006380	None at this time.	
NUK3206289 / 3463				\$0.00		
1,000,000 / 10/2012	0	0	0	\$0.00000		
Black Network Printer				\$0.00		
Connected /						
A-COPI						
B Unit Nursing Station						
Toshiba e-Studio 557 / 55 PPM	0	62,924	62,924	\$0.003570	What room is this unit located?	
CADD10068 / 5207				\$224.64		
3,000,000 / 06/2014	0	0	0	\$0.00000		
Black Photocopier				\$0.00		
Not Connected /						
A-COPI						
Subtotals BW			618,251	\$2,985.98		
Subtotals Color			91,538	\$4,715.82		

<i>Make-Model / Speed Serial Number / Vendor ID Life / Intro Date Connectivity / Printer Exp Date</i>				<i>Date of Last Upgrade: 5/1/2013</i>	
<i>Vendor</i>	<i>7/1/2014 Meter</i>	<i>6/30/2015 Meter</i>	<i>2014-15 Annual Volume</i>	<i>Cost/Copy Annual Cost</i>	<i>Recommendations</i>
MVH South Paris					
Administration					
Toshiba e-Studio 6540C / 65 PPM	178,727	365,231	186,504	\$0.003980	None at this time.
CCE312940 / 3430				\$742.29	
3,000,000 / 05/2011	107,072	223,449	116,377	\$0.05095	
Color Photocopier				\$5,929.41	
Connected /					
A-COPI					
Administrative Assistant					
Kyocera FS-4100DN / 45 PPM	4,861	10,065	5,204	\$0.006380	None at this time.
NUK2Z05712 / 3801				\$33.20	
1,000,000 / 10/2012	0	0	0	\$0.00000	
Black Network Printer				\$0.00	
Connected /					
A-COPI					
Admissions					
Kyocera FS-4100DN / 45 PPM	4,940	11,041	6,101	\$0.006380	None at this time.
NUK3206388 / 3476				\$38.92	
1,000,000 / 10/2012	0	0	0	\$0.00000	
Black Network Printer				\$0.00	
Connected /					
A-COPI					

<i>Make-Model / Speed</i>			<i>Date of Last Upgrade: 5/1/2013</i>		
<i>Serial Number / Vendor ID</i>					
<i>Life / Intro Date</i>					
<i>Connectivity / Printer Exp Date</i>					
<i>Vendor</i>	<i>7/1/2014 Meter</i>	<i>6/30/2015 Meter</i>	<i>2014-15 Annual Volume</i>	<i>Cost/Copy Annual Cost</i>	<i>Recommendations</i>
MVH South Paris					
B Unit					
Toshiba e-Studio 555 / 55 PPM	30,820	66,059	35,239	\$0.003570	None at this time.
CGEC16696 / 3428				\$125.80	
3,000,000 / 06/2009	0	0	0	\$0.00000	
Black Photocopier				\$0.00	
Connected /					
A-COPI					
Business Office Manager					
Kyocera FS-4100DN / 45 PPM	15,533	33,828	18,295	\$0.006380	None at this time.
NUK3206306 / 3480				\$116.72	
1,000,000 / 10/2012	0	0	0	\$0.00000	
Black Network Printer				\$0.00	
Connected /					
A-COPI					
C Unit					
Toshiba e-Studio 4540c / 45 PPM	69,196	153,669	84,473	\$0.003980	None at this time.
SML280293 / 3393				\$336.20	
1,000,000 / 05/2011	10,358	33,093	22,735	\$0.05095	
Color Photocopier				\$1,158.35	
Connected /					
A-COPI					

Make-Model / Speed Serial Number / Vendor ID Life / Intro Date Connectivity / Printer Exp Date Vendor					Date of Last Upgrade: 5/1/2013	
	7/1/2014 Meter	6/30/2015 Meter	2014-15 Annual Volume	Cost/Copy Annual Cost	Recommendations	
MVH South Paris						
C Unit Nurses' Station						
Kyocera FS-4100DN / 45 PPM	11,600	11,600	0	\$0.006380	Why is this machine showing no volume?	
NUK3206282 / 3479				\$0.00		
1,000,000 / 10/2012	0	0	0	\$0.00000		
Black Network Printer				\$0.00		
Connected / A-COPI						
Human Resources						
Kyocera FS-4100DN / 45 PPM	14,731	29,386	14,655	\$0.006380	None at this time.	
NUK3206298 / 3478				\$93.50		
1,000,000 / 10/2012	0	0	0	\$0.00000		
Black Network Printer				\$0.00		
Connected / A-COPI						
MDS Coordinator						
Kyocera FS-4100DN / 45 PPM	12,108	17,418	5,310	\$0.006380	None at this time.	
NUK2Z05692 / 3799				\$33.88		
1,000,000 / 10/2012	0	0	0	\$0.00000		
Black Network Printer				\$0.00		
Connected / A-COPI						

<i>Make-Model / Speed</i> <i>Serial Number / Vendor ID</i> <i>Life / Intro Date</i> <i>Connectivity / Printer Exp Date</i> <i>Vendor</i>				<i>Date of Last Upgrade: 5/1/2013</i>	
	<i>7/1/2014</i> <i>Meter</i>	<i>6/30/2015</i> <i>Meter</i>	<i>2014-15</i> <i>Annual</i> <i>Volume</i>	<i>Cost/Copy</i> <i>Annual Cost</i>	<i>Recommendations</i>
MVH South Paris					
Medical Records					
Kyocera FS-4100DN / 45 PPM	10,598	18,094	7,496	\$0.006380	None at this time.
NUK3206383 / 3475				\$47.82	
1,000,000 / 10/2012	0	0	0	\$0.00000	
Black Network Printer				\$0.00	
Connected /					
A-COPI					
Nurse Manager					
Kyocera FS-4100DN / 45 PPM	18,401	39,186	20,785	\$0.006380	None at this time.
NUK2800517 / 3629				\$132.61	
1,000,000 / 10/2012	0	0	0	\$0.00000	
Black Network Printer				\$0.00	
Connected /					
A-COPI					
Receptionist					
Kyocera FS-4100DN / 45 PPM	24,167	40,988	16,821	\$0.006380	None at this time.
NUK2Z05704 / 3797				\$107.32	
1,000,000 / 10/2012	0	0	0	\$0.00000	
Black Network Printer				\$0.00	
Connected /					
A-COPI					

Date of Last Upgrade: 5/1/2013					
Make-Model / Speed Serial Number / Vendor ID Life / Intro Date Connectivity / Printer Exp Date Vendor	7/1/2014 Meter	6/30/2015 Meter	2014-15 Annual Volume	Cost/Copy Annual Cost	Recommendations
MVH South Paris					
Resident Care Director					
Savin 301SPF / 31 PPM	29,949	59,324	29,375	\$0.006380	None at this time.
W912PC02479 / 3945				\$187.41	
750,000 / 06/2012	0	0	0	\$0.00000	
Black Laser MFP				\$0.00	
Connected /					
A-COPI					
Storage - Hot Swap					
Kyocera FS-4100DN / 45 PPM	0	0	0	\$0.006380	None at this time.
NUK3206308 / 3477A				\$0.00	
1,000,000 / 10/2012	0	0	0	\$0.00000	
Black Network Printer				\$0.00	
Connected /					
A-COPI					
Subtotals BW			430,258	\$1,995.68	
Subtotals Color			139,112	\$7,087.76	

<i>Company Wide Black Totals</i>	3,817,245	\$20,059.47
<i>Compnay Wide Color Totals</i>	437,552	\$23,098.48

SPC Service & Supply Cost Savings

These tables compare your equipment cost per copy for service and supplies (black prints or copies only) before becoming an SPC client on 8/15/2003 with your projected cost per copy for the new fiscal year through SPC. Annual Volume represents actual 2014-15 fiscal year black print usage. The second table represents your annual and five-year cost savings compared to your previous cost per copy rate.

BEFORE SPC

Current Volume	PriorCPC	Average Annual Cost
3,817,245	\$0.02351	\$89,743.43

CURRENTLY WITH SPC

Current Volume	Current CPC	Current Cost	Cost Savings	5 Year Savings
3,817,245	\$0.00525	\$20,040.54	\$69,702.89	\$348,514.47

*Today the Cooperative Buying of SPC has netted annual cost savings, on average, of \$69,702.89 x 12 years as a Client
= \$836,434.72 Cost Savings!*

Projected Equipment Costs by Building - Black

This table represents projected expenses for BLACK prints or copies by building based on recent activity. Approximate current paper case costs and averaged current annual lease payment are figured in to provide budget information for the upcoming fiscal year.

Building	Projected Black Volume	Projected Black Usage Cost	Approx.Paper Cost	Average Annual Equipment Cost	Total Projected Black Usage Cost
MVH Augusta	669,752	\$3,796.24	\$3,323.31	\$10,632.39	\$17,751.94
MVH Bangor	1,235,968	\$5,896.94	\$6,132.87	\$19,621.14	\$31,650.95
MVH Caribou	228,895	\$2,290.04	\$1,135.78	\$3,633.73	\$7,059.55
MVH Central	497,415	\$2,372.38	\$2,468.17	\$7,896.52	\$12,737.07
MVH Machias	136,706	\$722.21	\$678.34	\$2,170.22	\$3,570.77
MVH Scarborough	618,251	\$2,985.98	\$3,067.76	\$9,814.81	\$15,868.55
MVH South Paris	430,258	\$1,995.68	\$2,134.94	\$6,830.40	\$10,961.02
Total	3,817,245	\$20,059.47	\$18,941.17	\$60,599.21	\$99,599.85

SPC Equipment Bids:

Presently our Bids are coming in at 14.5% to 22% of Retail while the current Salesman's Cost is 50% of Retail. Example: Currently our bids for a Xerox 5890PT RADF Duplex Finisher 3-Hole Punch CIF-Print-Color Scan-Hard Drive for Secure Print-Fax 90 Copies per Minute are coming in at \$6,333 with a Retail Cost of \$43,495....14.5% of Retail!

Projected Equipment Costs by Building - Color

This table represents projected expenses for COLOR prints or copies by building based on recent activity. Current paper case costs and current annual lease payment are NOT figured in to this table, as they are covered in the Black prints report.

Building	Projected Color Volume	Service & Supply Cost
MVH Augusta	22,277	\$1,135.01
MVH Bangor	46,386	\$2,435.14
MVH Caribou	10,670	\$824.26
MVH Central	109,278	\$5,968.57
MVH Machias	18,291	\$931.93
MVH Scarborough	91,538	\$4,715.82
MVH South Paris	139,112	\$7,087.76
<i>Total</i>	437,552	\$23,098.48

Service & Supply Usage Profile by Vendor - Black

This table represents actual expenses for BLACK prints or copies by vendor for the current year along with projected service & supply expenses for the upcoming fiscal year. Under SPC's new Simplified Billing Program, SPC will invoice you directly for 50% of the Projected Annual Volume in July and January, and then reconcile based on actual usage in June. Cost per copy typically increases by 5% or CPI annually, whichever is less. **No CPC increase for current year.**

Vendor	Equipment Type	Annual Volume	2014-2015 Cost / Copy	Total Cost	2015-2016 Cost / Copy	Projected Cost
A-COPI	Black Laser MFP	357,504	\$0.00638	\$2,280.88	\$0.00638	\$2,280.88
A-COPI	Black Laser MFP	14,802	\$0.01148	\$169.93	\$0.01148	\$169.93
A-COPI	Black Network Printer	828,264	\$0.00638	\$5,284.32	\$0.00638	\$5,284.32
A-COPI	Black Network Printer	120,950	\$0.01148	\$1,388.51	\$0.01148	\$1,388.51
A-COPI	Black Photocopier	1,421,533	\$0.00357	\$5,074.87	\$0.00357	\$5,074.87
A-COPI	Black Photocopier	245,407	\$0.00459	\$1,126.42	\$0.00459	\$1,126.42
A-COPI	Color Network Printer	9,911	\$0.00638	\$63.23	\$0.00638	\$63.23
A-COPI	Color Network Printer	1,869	\$0.01148	\$21.46	\$0.01148	\$21.46
A-COPI	Color Photocopier	582,256	\$0.00398	\$2,317.38	\$0.00398	\$2,317.38
Levesque Office Supply	Black Network Printer	32,738	\$0.00725	\$237.35	\$0.00725	\$237.35
Levesque Office Supply	Black Network Printer	9,720	\$0.01250	\$121.50	\$0.01250	\$121.50
Levesque Office Supply	Black Network Printer	19,986	\$0.01375	\$274.81	\$0.01375	\$274.81
Levesque Office Supply	Black Network Printer	5,240	\$0.01925	\$100.87	\$0.01925	\$100.87
Levesque Office Supply	Black Photocopier	164,516	\$0.00950	\$1,562.90	\$0.00950	\$1,562.90
Levesque Office Supply	Color Network Printer	2,549	\$0.01375	\$35.05	\$0.01375	\$35.05
Total		3,817,245	\$0.00525	\$20,059.47	\$0.00525	\$20,059.47

Service & Supply Usage Profile by Vendor - Color

This table represents actual and projected expenses for COLOR prints or copies by vendor for the current and next fiscal year. Under SPC's new Simplified Billing Program, SPC will invoice you directly for 50% of the Projected Annual Volume in July and January, and then reconcile based on actual usage in June. Cost per copy typically increases by 5% or CPI annually, whichever is less. **No CPC increase for current year.**

Vendor	Equipment Type	Annual Volume	2014-2015 Cost / Copy	Total Cost	2015-2016 Cost / Copy	Projected Cost
A-COPI	Color Network Printer	19,243	\$0.05738	\$1,104.16	\$0.05738	\$1,104.16
A-COPI	Color Network Printer	6,283	\$0.11475	\$720.97	\$0.11475	\$720.97
A-COPI	Color Photocopier	401,356	\$0.05095	\$20,449.09	\$0.05095	\$20,449.09
Levesque Office Supply	Color Network Printer	10,670	\$0.07725	\$824.26	\$0.07725	\$824.26
Total		437,552	\$0.05279	\$23,098.48	\$0.05279	\$23,098.48

Reprographic Equipment Assessment

This chart provides the status of your equipment and details of your current lease, if any. *

Total Number of Units	123
Total Number of Units on Lease	86
Total Number of Units Owned	37
Lease Company	Northway Bank
Lease Start Date	5/1/2013
Lease End Date	8/1/2018
Term	5 Annual
Annual Payment usually due on 8/1	\$60,599.21
Remaining Payments	3

**The determination on the lease has no bearing on Service & Supply and Warranty Contracts.*

Leased Equipment

Building	Make/Model	Serial Number
MVH Augusta	Toshiba e-Studio 2550c	C7E210533
MVH Augusta	Savin 301SPF	W912PC02550
MVH Augusta	Savin 301SPF	W912PC02555
MVH Augusta	Toshiba e-Studio 2551c	C7G215597
MVH Augusta	Toshiba e-Studio 756	CKL212200
MVH Augusta	Kyocera FS-4100DN	NUK3206307
MVH Augusta	Savin 301SPF	W912PC02558
MVH Augusta	Kyocera FS-4100DN	NUK3206301
MVH Augusta	Savin 301SPF	W912PC02556
MVH Augusta	Toshiba e-Studio 756	CKL212188
MVH Augusta	Kyocera FS-4100DN	NUK3106221
MVH Bangor	Kyocera FS-1370DN	Q653461183
MVH Bangor	Kyocera FS-4100DN	NUK3206312
MVH Bangor	Kyocera FS-4100DN	NUK3206287
MVH Bangor	Kyocera FS-1370DN	Q653461187
MVH Bangor	Kyocera FS-4100DN	NUK3206389
MVH Bangor	Kyocera FS-1370DN	Q653461178
MVH Bangor	Kyocera FS-1370DN	Q653X72789
MVH Bangor	Kyocera FS-4100DN	NUK3206380
MVH Bangor	Kyocera FS-1370DN	Q653461182
MVH Bangor	Toshiba e-Studio 855	CRD210793
MVH Bangor	Toshiba e-Studio 856	SRH290239
MVH Bangor	Kyocera FS-4100DN	NUK3206378
MVH Bangor	Kyocera FS-1370DN	Q653461173
MVH Bangor	Kyocera FS-4100DN	NUK3206385
MVH Bangor	Toshiba e-Studio 2551c	C7G215602
MVH Bangor	Kyocera FS-1370DN	Q653461172
MVH Bangor	Toshiba e-Studio 556	CGEC16699

Building	Make/Model	Serial Number
MVH Bangor	Toshiba e-Studio 2551c	C7E210430
MVH Caribou	Kyocera FS-1370DN	Q653461190
MVH Caribou	Kyocera FS-4100DN	NUK3106223
MVH Caribou	Kyocera FS-4100DN	NUK3106226
MVH Caribou	Kyocera FS-4100DN	NUK3106224
MVH Caribou	Kyocera FS-4100DN	NUK3206293
MVH Caribou	Kyocera FS-1370DN	Q653461184
MVH Caribou	Kyocera FS-1370DN	Q653461192
MVH Caribou	Kyocera FS-1370DN	Q653461174
MVH Caribou	Kyocera FS-4100DN	NUK3106215
MVH Caribou	Kyocera FS-C5250	Q553407440
MVH Central	Kyocera FS-4100DN	NUK3106216
MVH Central	Toshiba e-Studio 5540c	CBA319739
MVH Central	Kyocera FS-1370DN	Q653X72788
MVH Central	Kyocera FS-4100DN	NUK3106219
MVH Central	Kyocera FS-1370DN	Q653X72782
MVH Central	Kyocera FS-4100DN	NUK3106225
MVH Central	Toshiba e-Studio 556	CGEC16719
MVH Central	Toshiba e-Studio 555	CGEC16700
MVH Central	Kyocera FS-1370DN	Q653461186
MVH Central	Toshiba e-Studio 6540C	CCE312943
MVH Machias	Kyocera FS-4100DN	NUK3206554
MVH Machias	Kyocera FS-1370DN	Q653461179
MVH Machias	Kyocera FS-1370DN	Q653461171
MVH Machias	Kyocera FS-4100DN	NUK3206296
MVH Machias	Kyocera FS-4100DN	NUK3206297
MVH Machias	Savin 301SPF	W912PC02554
MVH Machias	Kyocera FS-4100DN	NUK3236305
MVH Machias	Toshiba e-Studio 2551c	C7G215612
MVH Scarborough	Toshiba e-Studio 2551c	C7G215618

Building	Make/Model	Serial Number
MVH Scarborough	Kyocera FS-4100DN	NUK3206289
MVH Scarborough	Savin 301SPF	W912PC02549
MVH Scarborough	Savin 301SPF	W912PC02552
MVH Scarborough	Savin 301SPF	W913P107015
MVH Scarborough	Kyocera FS-4100DN	NUK3206382
MVH Scarborough	Kyocera FS-C5250	Q553808538
MVH Scarborough	Toshiba e-Studio 756	CKL212073
MVH Scarborough	Savin 301SPF	W912P700470
MVH Scarborough	Kyocera FS-4100DN	NUK3206284
MVH Scarborough	Kyocera FS-1370DN	Q653461181
MVH Scarborough	Kyocera FS-1370DN	Q653461177
MVH Scarborough	Kyocera FS-4100DN	NUK3206387
MVH Scarborough	Toshiba e-Studio 756	CKL212192
MVH Scarborough	Kyocera FS-4100DN	NUK3206386
MVH Scarborough	Kyocera FS-1370DN	Q653461176
MVH Scarborough	Kyocera FS-4100DN	NUK3206303
MVH Scarborough	Kyocera FS-4100DN	NUK3206384
MVH Scarborough	Toshiba e-Studio 2551c	C7E210476
MVH South Paris	Kyocera FS-4100DN	NUK3206306
MVH South Paris	Kyocera FS-4100DN	NUK3206308
MVH South Paris	Savin 301SPF	W912PC02479
MVH South Paris	Kyocera FS-4100DN	NUK3206383
MVH South Paris	Kyocera FS-4100DN	NUK3206298
MVH South Paris	Toshiba e-Studio 4540c	SML280293
MVH South Paris	Toshiba e-Studio 6540C	CCE312940
MVH South Paris	Toshiba e-Studio 555	CGEC16696
MVH South Paris	Kyocera FS-4100DN	NUK3206388
MVH South Paris	Kyocera FS-4100DN	NUK3206282

Owned Equipment

Building	Make/Model	Serial Number
MVH Augusta	Kyocera FS-4100DN	NUK2Z05617
MVH Augusta	HP Laser Jet P4515	CNDY894994
MVH Augusta	HP Laser Jet P4515	CNDY464732
MVH Augusta	Kyocera FS-1370DN	Q653X72785
MVH Augusta	HP Laser Jet P4515	CNDY464697
MVH Augusta	Kyocera FS-4100DN	NUK2X03612
MVH Bangor	HP Laser Jet M1522NF MFP	CNG9C8R01Z
MVH Bangor	Kyocera FS-4100DN	NUK2801896
MVH Bangor	Ricoh MP5000B	M5605400282
MVH Bangor	Kyocera FS-4300DN	NUB2900299
MVH Bangor	Toshiba e-Studio 556	CGI213684
MVH Bangor	Kyocera FS-C5350DN	QVQ2Z09109
MVH Bangor	Toshiba e-Studio 2551c	C7E210430a
MVH Caribou	Ricoh MP6001	V6905600278
MVH Caribou	Savin 9250	V8005500006
MVH Caribou	HP Laser Jet P4015N	CNDY398280
MVH Caribou	Savin SP4310n	T1139611736
MVH Caribou	Savin 9250	V8005401252
MVH Central	Kyocera FS-1370DN	LVK4X18982
MVH Central	Savin MP301SPF	W914PB05067
MVH Central	HP Color Laser Jet CM1312nfi	CNF8B1XJJM
MVH Central	Kyocera FS-4100DN	NUK2801869
MVH Central	Kyocera FS-4100DN	NUK2Z05682
MVH Central	Savin 301SPF	W912P601321
MVH Central	Kyocera P2135DN	LVK4X18968
MVH Central	Savin MP301SPF	W914PC01499
MVH Central	HP Laser Jet P3010	VNBCCDM2ZV
MVH Central	Savin 301SPF	W912P700456
MVH Machias	Ricoh MP6001	V6905600166

Building	Make/Model	Serial Number
MVH Machias	HP Laser Jet P2035	CNB9X80321
MVH Scarborough	HP Laser Jet M1522NF MFP	CNC983P1G8
MVH Scarborough	Ricoh MP6001	V6905600312
MVH Scarborough	Toshiba e-Studio 557	CADD10068
MVH South Paris	Kyocera FS-4100DN	NUK2Z05692
MVH South Paris	Kyocera FS-4100DN	NUK2800517
MVH South Paris	Kyocera FS-4100DN	NUK2Z05704
MVH South Paris	Kyocera FS-4100DN	NUK2Z05712

SERVICE AND SUPPLY CONTRACT - CLIENT

Specialized Purchasing Consultants ("SPC") hereby contracts with _____ ("Client") to provide comprehensive services, supplies, and maintenance to equipment described on Schedule A ("Equipment") using the Contracted Vendor shown below at a cost per print shown on said Schedule A, commencing on _____ and terminating on June 30, _____. This Service and Supply Contract ("Contract") shall exclude only the cost of paper, transparencies, and staples. Refer to Schedule A for Additional Provisions, if any.

SPC assumes responsibility for all billing and vendor payment. SPC shall invoice Client one-half of the annual projected number of pages multiplied by the cost per print listed on Schedule A. This semi-annual billing will take place July 1 and January 1. Actual meter reads will be collected by SPC either electronically or from Client staff during the month of June. A final Reconciliation spreadsheet and invoice will then be completed and sent to client. Upon payment of each billing invoice during the year, SPC will reimburse Contracted Vendor appropriately. Client is responsible for making payment in full within 30 days of said invoicing to avoid suspension of supplies by Contracted Vendor.

On July 1 of each calendar year during the afore-mentioned term, SPC shall credit Client any unused prepaid pages to Client if fewer copies were made by Client during the Contract period ending on or before June 30 annually than were originally estimated under this Contract for such period. If more pages were consumed than billed in the combined semi-annual billing, an overage invoice will be generated. Following semi-annual billing will be based on previous year volume.

On July 1 of each calendar year during the term of this Contract, SPC, at its option, may increase such costs per print under this Service and Supply Contract by 5% or by a percentage equal to the increase during the immediately preceding 12-month period of "The Consumer Price Index for All Urban Consumers (CPI-U) for the U.S. City Average for All Items, 1982-84 = 100," whichever is less.

Client may terminate Contract at any time with a 30-day written notice. Client will be required to provide final meter reads on all Equipment listed on Schedule A, including those added during the Contract term. Any credits owed to Client after reconciling actual usage versus projected will be paid to Client. Client must return any unused consumables to Contracted Vendor.

AGREED AND ACCEPTED BY:
Specialized Purchasing Consultants

By: Skip Tilton

Title: President/Owner

Date: _____

Signature: _____

AGREED AND ACCEPTED BY:

By: _____

Title: _____

Date: _____

Signature: _____

Named Contracted Vendor: *Vendor*

WARRANTY

Vendor ("Contracted Vendor") hereby warrants to _____ ("Client") that, if any such Equipment described on Schedule B attached hereto malfunctions through no fault of Client during the term commencing on _____ and terminating on June 30, _____, and such Equipment cannot be repaired promptly, Contracted Vendor, *through Specialized Purchasing Consultants*, will replace such Equipment with equipment which is equal to or superior in quality and capabilities to the Equipment being replaced, at no cost to Client. Refer to Schedule B for Additional Provisions to this Warranty.

The only exclusions to this Warranty are as follows:

1. This Warranty will expire for an item of Equipment when the Warranty Life of such item of Equipment in number of copies, as shown on Schedule B attached hereto, is exceeded;
2. This Warranty will expire for an item of Equipment at the date which is ten years after such Equipment was first offered for sale or lease by the manufacturer as shown on Schedule B attached hereto.

**AGREED AND ACCEPTED BY:
Vendor**

By:

Title:

Date:

Signature: _____

**AGREED AND ACCEPTED BY:
Client**

By:

Title:

Date:

Signature: _____

StarDoc User Names

Name	User Name
Andre Morin	amorin@mainevets.org
Blanche Browne	bbrowne@mainevets.org
Brian Foote	bsfoote@mainevets.org
David Schmader	dschmader
Joanne Hooper	jhooper@mainevets.org
Judy Young	jyoung@maineveteranshomes.org
Kelly Stevens	kstevens@mainevets.org
Linda Gosselin	lgosselin
Mark Pavitt	mpavitt
Phil Jean	pjean@maineveteranshomes.org
Romeo Parent	rparent@maineveteranshomes.org
Stacy Butler	sbutler@mainevets.org
Susan Boulrier	sboulrier@mainevets.org
Tammy Pulk	tpulk@mainevets.org
Veronica Casterline	vcasterline@mainevets.org
Victoria Evans	vevens@mainevets.org
Wendy Gallant	wgallant@mainevets.org

*If you need to verify your password or if you need to add users, please contact Alex Webster at awebster@spccopypro.com



2012

STARDOC created

- Live Floor Plans - Allows IT administrators to move devices around on their own floor plans.

2013

Daily Tracking

- Meters gathered daily to track usage
- Daily adjusts projected annual volumes for fiscal year

2014

Monthly Audits

- Allows user to see monthly snapshot of current usage and estimated projections

2015

New Mapping Options & Asset Management

- Allows mapping of other IT devices (Wireless Access Points, IP Camera, Projectors, VOIP phones)
- IT Asset Management tracks all IT purchases, warranty expirations, etc.



New Feature: IT Asset Management

- **Keep Track of your IT Purchases**
- **Budget for Future Needs**
- **Map Out Your IT Devices on Floor Plans**

IT Asset Management

Legend: < 1 year 1-3 years > 3 years

Filters

Type: (All) Black Laser MFP Black Network Printer Black Photocopier

Warranty End: (All) 2002-10-01 2013-04-01 2014-10-01

Search

Page 1 of 1 Records 1 to 36 of 36 Groups per page 50

Type	Make	Model	Introduced	Purchased	Warranty End	Est. Replacement Cost	Est. Replacement Date
Black Laser MFP	Oce	VL3200x	2010-08-01		2020-08-01	LEASE	
Black Network Printer	HP	Laser Jet 4m	1992-10-01		2002-10-01	LEASE	
Black Network Printer	HP	Laser Jet 1300	2003-04-01		2013-04-01	LEASE	
Black Network Printer	HP	Laser Jet 1320TN	2004-10-01		2014-10-01	LEASE	
Black Network Printer	HP	Laser Jet 1022N	2005-05-01		2015-05-01	LEASE	
Black Network Printer	HP	Laser Jet 1022N	2005-05-01		2015-05-01	LEASE	
Black Photocopier	Savin	8055	2006-07-01		2016-07-01	LEASE	
Black Photocopier	Konica Minolta	BH421	2008-06-01		2018-06-01	LEASE	
Black Photocopier	Konica Minolta	BH421	2008-06-01		2018-06-01	LEASE	
Black Photocopier	Konica Minolta	BH421	2008-06-01		2018-06-01	LEASE	
Black Photocopier	Toshiba	e-Studio 855	2009-06-01		2019-06-01	LEASE	
Black Photocopier	Toshiba	e-Studio 855	2009-06-01		2019-06-01	LEASE	
Black Photocopier	Toshiba	e-Studio 855	2009-06-01		2019-06-01	LEASE	
Black Photocopier	Toshiba	e-Studio 855	2009-06-01		2019-06-01	LEASE	
Color Network Printer	Xerox	6180DN	2007-02-01		2017-02-01	LEASE	
Color Network Printer	Canon	LPB5460	2009-08-01		2019-08-01	LEASE	
Color Network Printer	Canon	LPB5460	2009-08-01		2019-08-01	LEASE	
Color Network Printer	Canon	LPB5460	2009-08-01		2019-08-01	LEASE	
Color Network Printer	Canon	LPB5460	2009-08-01		2019-08-01	LEASE	
Color Network Printer	Canon	LPB5460	2009-08-01		2019-08-01	LEASE	
Color Network Printer	Canon	LPB5460	2009-08-01		2019-08-01	LEASE	
Color Photocopier	Canon	IRC5045	2009-10-01		2019-10-01	LEASE	
Color Photocopier	Toshiba	e-Studio 3040c	2011-05-01		2021-05-01	LEASE	
Color Photocopier	Toshiba	e-Studio 3040c	2011-05-01		2021-05-01	LEASE	
Digital Projector	Dell	1220		2015-02-02	2019-02-02	\$600	2019/09/01
Digital Projector	Dell	1220		2015-02-02	2019-02-02	\$600	2019/02/01
IP Camera	Foscam	FI8910W		2015-08-01	2016-08-01	\$300	2016/09/01
IP Camera	Foscam	FI8910W		2015-08-01	2016-08-01	\$300	2016/08/01
Server	Dell	Optiplex 332		2015-08-02	2018-08-02	\$2850	2018/09/02
Server	HP	ProLiant DL360 Gen9		2015-09-01	2018-09-01	\$2850	2018/10/01
Switch	Cisco	Catalyst 6800ia		2015-08-02	2018-09-02	\$4856	2018/09/02



New Feature: IT Asset Management

Building: Bass Elementary
Floor/Wing: 1
There are 10 devices on this map
5 Device Type(s) Selected Show: Proposed

Building: Bass Elementary
Room: Hallway 4
Model: TP-LINK 2000 NAT+

Type: Wireless Access Point
Serial Number: 234
IP Address: 192.168.1.2
MAC Address: ABC123

Management URL: 192.168.1.2:28604
Hostname: HALL4
Domain: Primary
Date Purchased: 2015-03-31
Warranty Expiration: 2016-03-30

Notes: Another custom note

Instructions

To view the device information click on a device icon.

To move a device to a new location click and drag an icon from its current location to a new location

When you drop the device at its new location a window will be displayed to enter the new room number or name. Click the OK button to confirm the room change. Click the cancel button to return the device to its original location.

Specialized Purchasing Consultants Skip Tilton stilton@spccopypro.com 800.750.1538
Do not distribute without the expressed written permission of SPC

Legend:

- Voip Phone
- Wireless Access Point
- IP Camera
- Server
- Switch

☐ Enable Row Hover

Search:

ID	Room	Make	Model	Connectivity
3	Library	Canon	IRC5045	Networked
3	Library2	Canon	IRC5045	Networked
8	Special Education Room 302	Konica Minolta	BH421	Networked
9	Room 300 Hall	Konica Minolta	BH421	Networked
10	testing room change emails...	Konica Minolta	BH421	Networked
299	Room 300	Canon	LPB5460	Networked
304	Children	Oce	VL3200x	Networked
305	Health Occupation	Canon	LPB5460	Networked
307	Child Care	Canon	LPB5460	Networked
312	313	Canon	LPB5460	Networked

Showing 1 to 10 of 10 entries

Room	Make	Model
Hallway 4	TP-LINK	2000
Teachers	Polycom	VVX 410
Room 28	Dell	1220
Main Hall	Foscam	FI8910W
Room 29	Dell	1220
Library	Dell	1220
Library	Polycom	VVX 410
Main Office	Polycom	VVX 410
Hall A	Foscam	FI8910W
Hall B	Foscam	FI8910W

[Edit Other Devices](#)



Benefits of partnering with SPC

Top Benefits to **our CLIENTS**:

1. Cooperative Buying

By definition, is a model that allows a group of buyers with a common interest to pool their buying power in order to negotiate more favorable pricing and better service. SPC's model allows you to pick your preferred vendor!

- SPC's pricing is so strong ***we pay for our own fee*** by acquiring prices lower than what you can do on your own.
- We will ***save you money*** benefiting from the combined purchasing power of more than 90 clients with over 3,443 devices doing more than 314 million copies and prints per year. In 2013 we purchased approximately 1,000 printing devices.
- We will ***save you time*** by preparing your bid, negotiating with vendors/manufacturers, presenting a total bid analysis and managing the implementation.
- We will ***save you frustration***. We manage your contracts for up to five years from the date of installation.

2. Exclusive **STAR Doc Software**

- Maps all devices and sets up "Interactive Live Floor Plans" of all printing devices, showing you a Before and After Upgrade look; provides a visual for all decision makers over the next five years.
- STAR Doc studies your printing habits and is able to predict your year-end cost months in advance, before you receive your year-end reconciliation invoice.
- Sets up your next year's budget at the click of a mouse.

3. Simplified Billing Program

- Removes the confusion out of billing.
- Eliminates variety of invoices from multiple vendors that come annually and/or quarterly.
- With SPC's Simplified Billing Program, TWO invoices are sent each year from ONE billing source.
- Reconciles all of your devices at the end of the year: You pay only for what you use; no minimums.

4. Five-Year Equipment Replacement Schedule

- SPC's staff surveys key locations that determine life of existing equipment.
- Specs out new equipment needed: Does not allow vendors to undersize during the bidding process.
- Manages the entire bid process down to the install.

5. Annual Report

- A crucial document that extends the life of your equipment, often getting 8 to 10 years of guaranteed performance! Flags copying trends within your organization such as over usage
- You get an overview of your current equipment situation, reports associated with copying and printing costs and, if needed, recommendations for addressing situations posing a problem

6. Vendor Neutral

- SPC does not recommend just one brand; we suggest what's best for you with serviceability in mind.
- We present you with the bid results and offer recommendations, yet the decision is yours to make.

SPC has been serving their clients since 1988, saving millions of dollars along the way.

Based on current actual volumes and CPCs, SPC has generated

Annual Savings of almost \$3.5 million for all of our clients.

That translates into Savings of more than \$17.2 million over five years!



SPC Values Our Vendors

Overall Benefits to our VENDORS

- Opportunities brought to you – Hundreds of machines each year: In 2013 there were over a thousand.
- SPC is well respected in the industry
- SPC values our vendors and speaks highly of them to our clients.
- National Contracts that are all negotiated with the manufacturers at your disposal

Vendor Benefits Pre-Bid & During the Bid Process

- Sharing of previous bid results that help you to negotiate with your manufacturers.
- On-Site Survey of client requirements including mapping all devices.
- Writing of the *Five-Year Equipment Replacement Schedule* (Bid Specs).
- Controls the Bid Specs (Not allowing any vendor to underbid or offer discontinued equipment).
- A chance to sell your 'Value Add' directly to our clients after the bids are in. Customer has the right to pay more than low bid.

Vendor Benefits Before & During Installation

- Digital Needs Analysis: Matching up the machine to installation site.
- Schedule and coordinate Vendor meeting with Client.
- Cover the cost of ESP surge protectors, electrical wiring, computer interface and any unexpected cost!
- Manage installation.
- Audit installation.
- Capture final meter reads for old contracts.
- Close books on old devices & contracts.

Vendor Ongoing Support

- Yearly meter reads.
- Simplified Billing: SPC collects service funds for the Vendor.
- Collection of all meter reads annually and reconciling them with the Client and Vendor.
- STAR Doc: **S**ystem for **T**racking **A**nd **R**eporting **D**ocuments...Manages the budget.
- Annual Reports that flag machines that are being overused and underused thus improving reliability.
- Mediating warranty issues in sensitive locations.

Why do some vendors hesitate to bid?

- Vendors worry that bidding will reduce their margins.
- If word gets out on pricing, they feel that their other customers will call and ask for similar prices.
- Lose control of their account as winning bidder may beat their pricing.
- SPC bids are designed to keep specs equal for all, no chance of providing a lesser piece of equipment.

SPC manages over 3,700 pieces of equipment;
Our relationship with our vendors has never been *stronger*!