



Specialized Purchasing Consultants

PO Box 190

Gorham, NH 03581

(800) 750-1538

www.spccopypro.com

2011-12 Annual Report
Year - End Photocopier Analysis

With projected costs for 2012-13

George Rennie
Cheshire Medical Center
580 Court Street
Keene, NH 03431



Specialized Purchasing Consultants Corp.
Serving Maine & New Hampshire since 1988

November 2012

Skip Tilton
President

Corporate Office:
PO Box 190
Gorham, NH 03581
(800) 750-1538
(866) 281-7596 Fax

George Rennie
Cheshire Medical Center
580 Court Street
Keene, NH 03431

VISIT US ON THE WEB: Dear George:
www.spccopypro.com

Once again the staff at SPC would like to extend our appreciation for being of service to you and your organization for the past *6 years*. Though each year seems to pose unique challenges, we are thrilled with all that we have been able to accomplish on behalf of our clients for the past *24 years*.

In these difficult economic times, our staff continues to be fully committed to assisting your organization in achieving goals and objectives relative to new technologies and related costs. In relation to new services, we are excited to bring to your attention *new cost-savings initiatives as well as a new service called SPC STAR Doc* that will continue to meet our mutual goal of improving the quality of service and equipment while reducing your overall cost.

I hope you find the enclosed annual report useful. We are providing you an overview of your current equipment situation, reports associated with copying and printing costs and, if needed, recommendations for addressing situations posing a problem now or could become a problem in the near future.

Thank you again for allowing SPC the opportunity to be of service. If you have any questions or are in need of more information, please let us know.

Sincerely,

Skip Tilton
President

Table of Contents

The SPC Team	1
Equipment Health Status.....	3
Aging Equipment Summary	4
Black & Color Usage Comparisons	9
Usage Profile for Service & Supplies	10
Masters Usage Expenses	119
SPC Service & Supply Cost Savings	120
Projected Equipment Costs by Building - Black	121
Service & Supply Usage Profile by Vendor - Black.....	122
Projected Equipment Costs by Building - Color.....	123
Service & Supply Usage Profile by Vendor - Color.....	124
Reprographic Equipment Assessment	125
Leased Equipment.....	126
Owned Equipment	137
Active Reprographic Equipment & Manufacturers	138
Improved SPC Services	139
SPC's Service & Supply Contract – Purpose & Sample	142
SPC's Dual-Layered Warranty – Purpose & Explanation.....	143

The SPC Team

would like to personally thank you for your continued trust and confidence!



Skip Tilton, President

Billie Jo Tilton, Vice President

As co-founders of SPC, Billie Jo and I are very proud of our team of professionals. The concept of group purchasing to save millions has grown since 1988 into providing over 16 different managerial services that increase reliability and extend the life of your equipment. However, none of this would have been possible without the loyalty of over 117 clients (3200+ machines with 1.7 billion prints over five years). Together, we have realized the lowest prices possible while improving the quality of your service and



equipment.



Paul Garozzo

General Manager

As General Manager my goal is ensure our clients are pleased with our services and also provide solutions that are efficient, productive and reduce cost. With my 23 years in the copier industry, I will use my experiences to achieve this

goal. In addition, I will be utilizing our new SPC STARDoc system to further enhance SPC services. Clients will now have the benefit of visually seeing where all their devices are located and project future expenses. I could not be more excited to join the SPC team.

Glen Fortier

Auditor, Electronic Specialist & Equipment Implementation

With 24 years of experience in the electrical field, I look forward to continually meeting and helping all of you with your reprographic needs. It is my sincere commitment to ensure all machine changes are as smooth as possible.



Derik Brasher

Administration & Finance Manager

SPC is committed to providing cost-effective and reliable reprographic platforms to our community of clients. My 20+ years of experience in corporate management will be key in

strengthening the relationships between SPC's clients and vendors. I will be focused on responding to your inquiries with the goal of solving any issues that may arise in a timely and efficient manner. Providing quality customer service is my top priority.

Alex Webster

Director of Customer Relations

It is a great pleasure for me to join the SPC team. One of my responsibilities will be creating detailed maps of your Copiers/Printers and will be assisting the team in monitoring all of your equipment. My background as a Network Technician and my experience in Customer Service will allow me to give our clients the level of service that they have come to expect from SPC. It is my personal goal to aid in fulfilling each and every promise made to our valued clients.



The SPC Team Continued....



Robert B. Dutil

Director of Information Technology

I have been working with SPC since February 2000. SPC's honesty, work ethics and loyalty have made my experience with the company a pleasurable journey. SPC is

constantly trying to improve their technology to better serve their clients. My goal has been to give our clients and associates the best tools available to allow them to be more productive. By doing this, our clientele has the ability to monitor their assets and keep their costs down. I am excited about what the future holds for SPC and our clients.

Rachel Guay

Accounting Coordinator

I am responsible for the majority of the accounting communications between SPC and its vendors and clients. I will rely upon my years of experiences and my strong attention to detail to ensure our client's needs are well served. It is my goal to work accurately and efficiently and to uphold the high standards of customer satisfaction that SPC has provided to their customers. I look forward to establishing a strong working relationship with each and every one of you.



Pam Weed

Client-Vendor Relations

SPC's clients are my Number One priority. When you have a question, concern, need, or problem related to equipment, service or billing, I am available to assist you in getting it resolved promptly. I am pleased to be able to act as liaison between our

clients and vendors to ensure smooth transitions or quick resolutions.

Anne Arbore

Administration

Since many of our clients are educational systems, I find it satisfying to know that my co-workers and I have made a contribution toward their success by assisting them in saving on their budgets for reprographic equipment, providing better quality equipment to work with and freeing their resources for other needs.



Laura Lynch

Marketing Coordinator & Client Relations

As a member of the SPC team for the past 12 years as their website designer, I am excited to take on this new position. Some of my responsibilities will include

scheduling essential meetings with our clients and vendors, creating new marketing collateral and developing new clients. I look forward to establishing a closer relationship with each of our clients.

Equipment Health Status

Total Number of Machines:	309
Total Black Photocopiers	74
Total Low Cost of Operation Black Network Printers	143
Total High-Speed Duplicators	1
Total Color Photocopiers (including MFP)	72
Total Low Cost of Operation Color Network Printers	19
Total Removed from Service:	0
# of Units OFF Warranty:	0
# of Units Approaching End of Warranty:	2
# of Units Overused:	9
# of Units Underused:	3
# of Units Connected to Network with Print and/or Scan	302
Commencement Date:	4/1/2011
# of Annual Payments Left on Lease	3
All Warranties and Service Contracts Expire:	6/30/2016
Print Management Software Loaded	No
LENP Contract Signed	No

NOTE: When a machine goes off warranty, it does not mean that the service contract expires. It simply means that if a replacement machine becomes necessary, it may not be at "no charge."

George,

This year your volumes have gone up both on b/w and color. Since we added printers to this contract it would affect these volumes as expected. However there is good news to help anticipate future volumes. That is with SPC STAR Doc. We are excited to bring this offering to our customers and will help you tremendously with monthly projections. Paul will demonstrate this at your Annual Report meeting. It's a pleasure having you as our SPC client. You can always reach out to me when needed.

Regards,

Skip

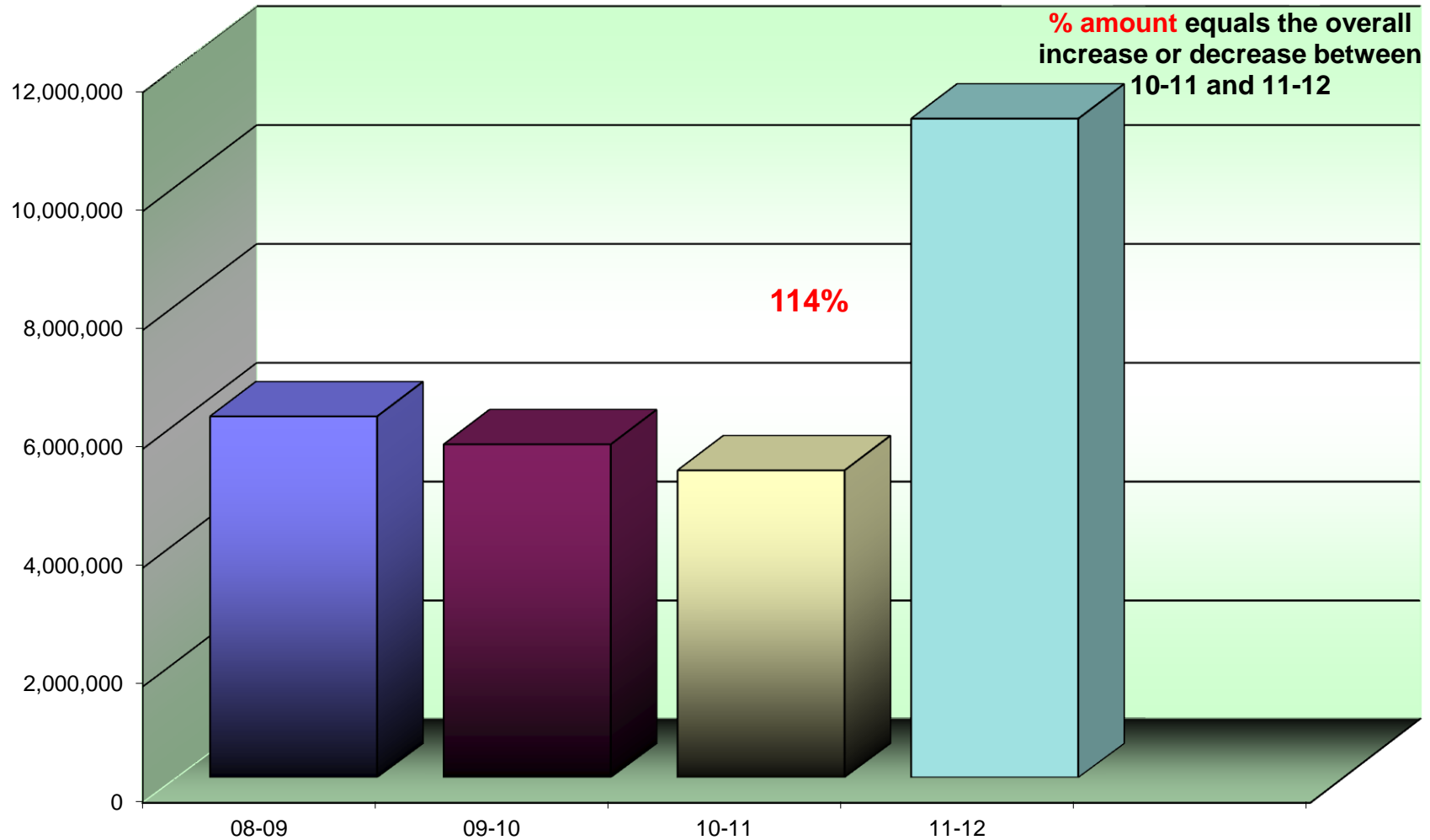
Aging Equipment Summary

The following equipment is **seven or more years** from the date they were first offered for sale by the manufacturer. This is a major factor because availability of parts, cost of operation and warranties all become diminished at 10 years from the date of Intro. Usage, age, and service history need to be considered to see if they are due for replacement soon.

Building	Department	Make/Model	Serial #	Vendor ID	Intro Date
Cheshire Medical Center	Print Shop	Risograph RZ310	81830878	C5385	10/2004
Cheshire Medical Center	Print Shop	Konica Minolta BHc500	65LE00633		02/2005

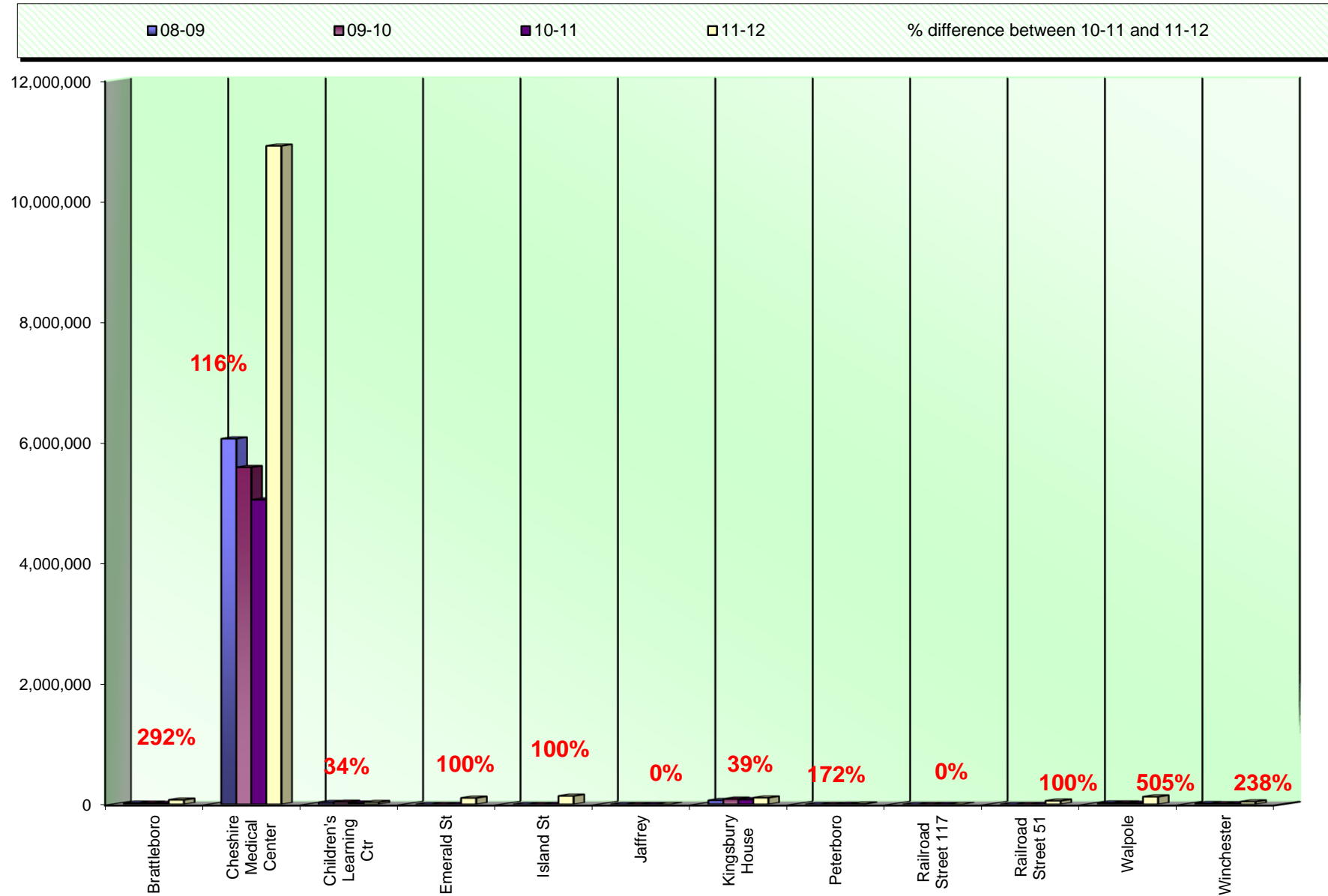
This report uses current trends for black volume to project future costs and potential equipment needs on an overall basis.

ANNUAL BLACK VOLUME OVERALL



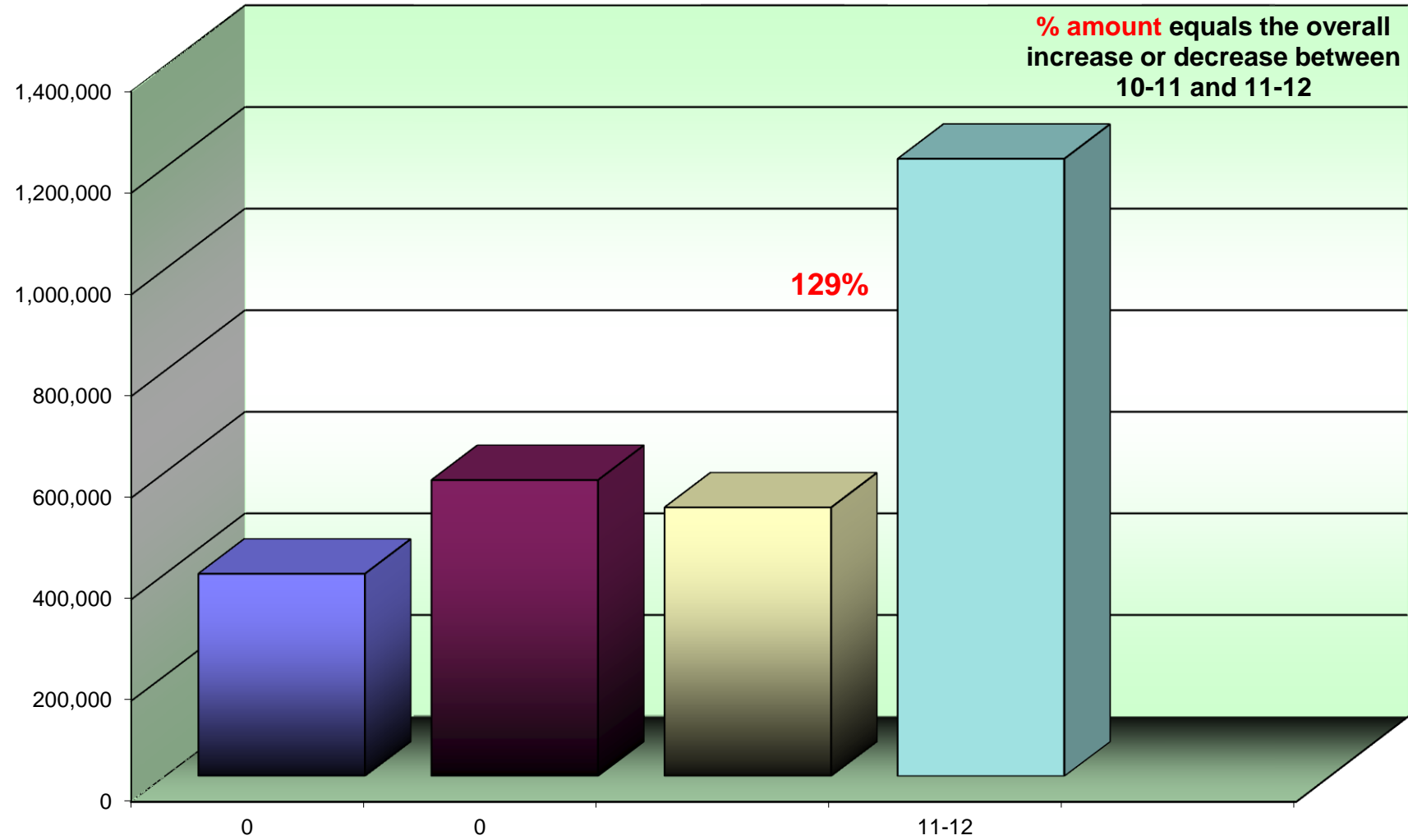
This report uses current trends for *black volume* to project future costs and potential equipment needs by building.

ANNUAL BLACK VOLUME BY BUILDING



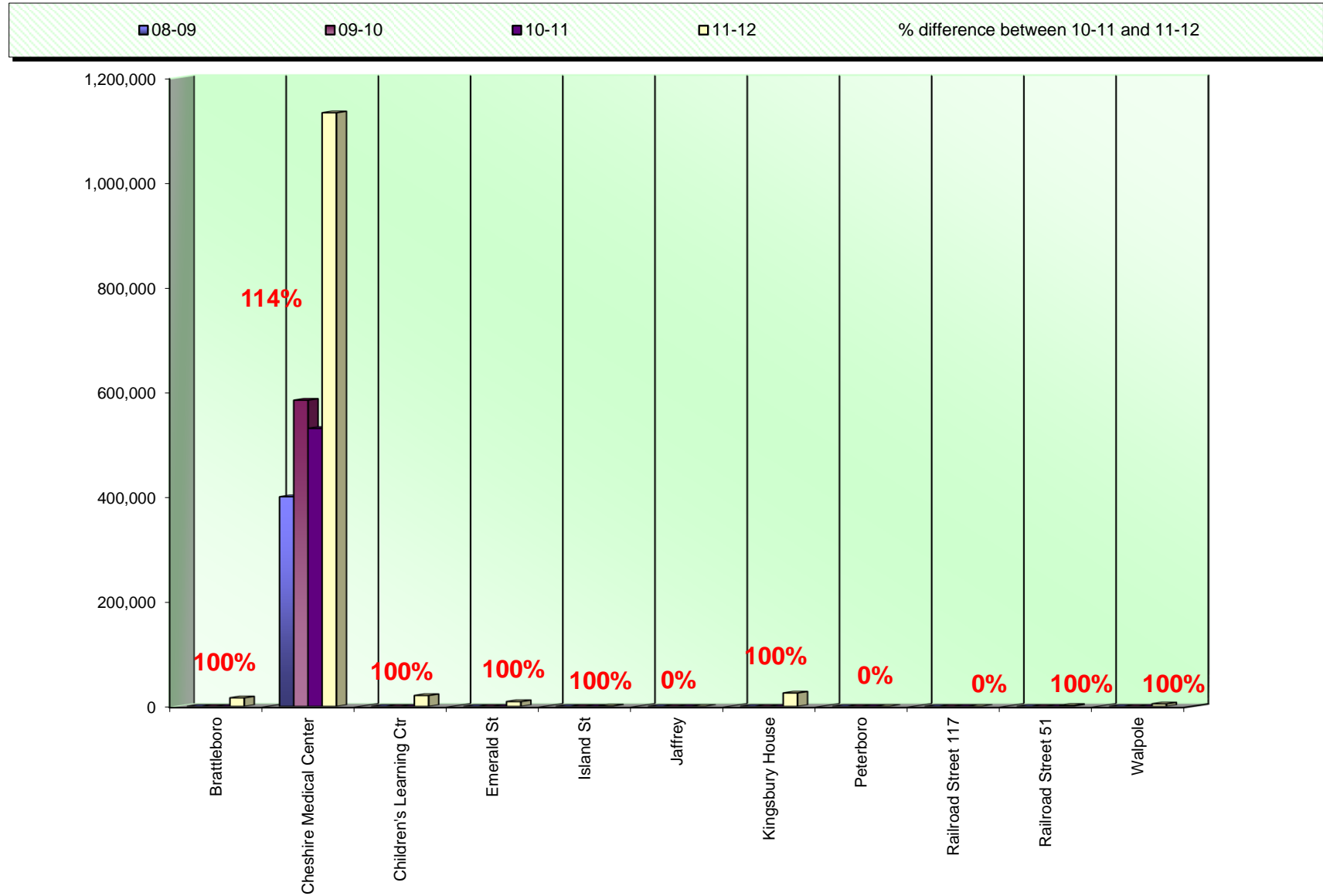
This report uses current trends for color volume to project future costs and potential equipment needs on an overall basis.

ANNUAL COLOR VOLUME OVERALL



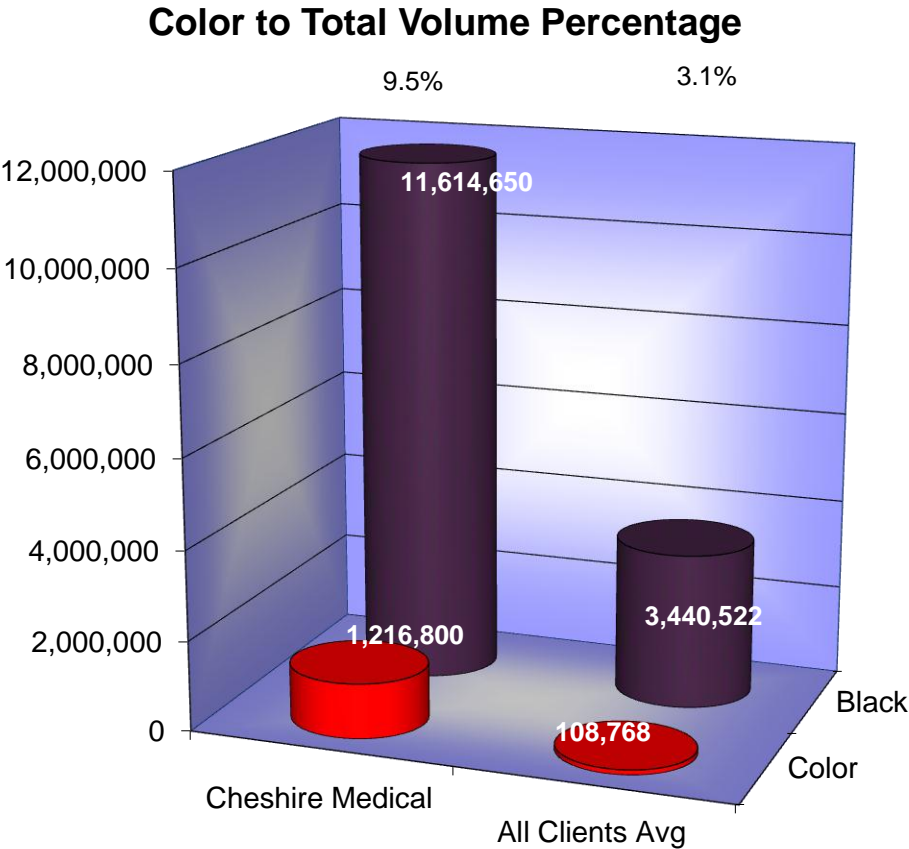
This report uses current trends for color volume to project future costs and potential equipment needs by building.

ANNUAL COLOR VOLUME BY BUILDING



Black & Color Usage Comparisons

This chart compares your current usage ratios to the average of all SPC client school districts.



Usage Profile for Service & Supplies

The usage analysis shown here provides an overview of the usage of each piece of equipment currently under contract and monitored by SPC. Projected Volume comparison is based on projected volume figured on your most recent Five-Year Equipment Replacement Schedule.

Date of Last Upgrade: 4/1/2011

<i>Make-Model / Speed</i>							
<i>Serial Number / Vendor ID</i>							
<i>Life / Intro Date</i>							
<i>Connectivity / Printer Exp Date</i>							
<i>Vendor</i>	<i>7/1/2011 Meter</i>	<i>6/30/2012 Meter</i>	<i>2011/12 Annual Volume</i>	<i>2012/13 Projected Volume</i>	<i>Volume Difference</i>	<i>Cost/Copy Annual Cost</i>	<i>Recommendations</i>
Brattleboro Campus							
Main Office							
Ricoh MPC300 32 CPM Black & Color	1	40,163	40,162	24,415	15,747	\$0.003900	None at this time.
S7215100321 / 12437553						\$156.63	
750,000 / 01/2011	0	6	6	0	6	\$0.04995	
Color Photocopier						\$0.30	
Connected							
IKON							
Rheumatology							
Ricoh SP5100 45 CPM	0	0	0	8,996	-8,996	\$0.012000	None at this time.
S2109300325 /						\$0.00	
1,000,000 / 05/2007	0	0	0	0	0	\$0.00000	
Black Network Printer						\$0.00	
Connected							
IKON							
Serenity House							
Ricoh MPC3001 30 CPM	4,747	39,289	34,542	3,861	30,681	\$0.003900	None at this time.
V9315000935 / 12437395						\$134.71	
750,000 / 11/2010	3,024	19,526	16,502	0	16,502	\$0.04995	
Color Photocopier						\$824.27	
Connected							
IKON							
	Subtotals B&W		74,704	37,272		\$291.35	
	Subtotals Color		16,508	0		\$824.57	

Cheshire Medical Center

Date of Last Upgrade: 4/1/2011

<i>Make-Model / Speed</i>							
<i>Serial Number / Vendor ID</i>							
<i>Life / Intro Date</i>							
<i>Connectivity / Printer Exp Date</i>							
<i>Vendor</i>	<i>7/1/2011 Meter</i>	<i>6/30/2012 Meter</i>	<i>2011/12 Annual Volume</i>	<i>2012/13 Projected Volume</i>	<i>Volume Difference</i>	<i>Cost/Copy Annual Cost</i>	<i>Recommendations</i>
Cheshire Medical Center							
Accounts Payable							
Ricoh MPC400 42 CPM	12,019	60,037	48,018	40,831	7,187	\$0.003900	None at this time.
S7406000101 / 12437389						\$187.27	
1,000,000 / 01/2011	3,817	19,027	15,210	0	15,210	\$0.04995	
Color Photocopier						\$759.74	
Connected							
IKON							
Admin - One - Exec Secretary							
Ricoh SP5100 45 CPM	7,045	31,045	24,000	27,548	-3,548	\$0.012000	None at this time.
S2109300065 / 12437665						\$288.00	
1,000,000 / 05/2007	0	0	0	0	0	\$0.00000	
Black Network Printer						\$0.00	
Connected							
IKON							

Cheshire Medical Center

Date of Last Upgrade: 4/1/2011

Make-Model / Speed Serial Number / Vendor ID Life / Intro Date Connectivity / Printer Exp Date Vendor	7/1/2011 Meter	6/30/2012 Meter	2011/12 Annual Volume	2012/13 Projected Volume	Volume Difference	Cost/Copy Annual Cost	Recommendations
Cheshire Medical Center							
Admin - Print Room							
Ricoh MP201SPF 21 CPM W3019100534 / 12437418 500,000 / 02/2011 Black Photocopier Connected IKON	0	2,995	2,995	371	2,624	\$0.003900 \$11.68 \$0.00000 \$0.00	None at this time.
Ricoh MPC6501 65 CPM V7610500236 / 12437417 3,000,000 / 03/2010 Color Photocopier Connected IKON	0	80,851	80,851	156,034	-75,183	\$0.003900 \$315.32 \$0.04995	None at this time.

Cheshire Medical Center

Date of Last Upgrade: 4/1/2011

Make-Model / Speed Serial Number / Vendor ID Life / Intro Date Connectivity / Printer Exp Date Vendor	7/1/2011 Meter	6/30/2012 Meter	2011/12 Annual Volume	2012/13 Projected Volume	Volume Difference	Cost/Copy Annual Cost	Recommendations
Cheshire Medical Center							
Allergy - Nurses' Station							
Ricoh SP5100 45 CPM S2109300357 / 12437576 1,000,000 / 05/2007 Black Network Printer Connected IKON	2	500	498	314	184	\$0.012000 \$5.98 \$0.00000 \$0.00	None at this time.
Ricoh SP5100 45 CPM S2109300327 / 12437664 1,000,000 / 05/2007 Black Network Printer Connected IKON	2	9,865	9,863	9,869	-6	\$0.012000 \$118.36 \$0.00000 \$0.00	None at this time.
Ricoh SP5100 45 CPM S2109300228 / 12437575 1,000,000 / 05/2007 Black Network Printer Connected IKON	10,109	59,394	49,285	40,512	8,773	\$0.012000 \$591.42 \$0.00000 \$0.00	None at this time.

Cheshire Medical Center

Date of Last Upgrade: 4/1/2011

<i>Make-Model / Speed</i>							
<i>Serial Number / Vendor ID</i>							
<i>Life / Intro Date</i>							
<i>Connectivity / Printer Exp Date</i>							
<i>Vendor</i>	<i>7/1/2011 Meter</i>	<i>6/30/2012 Meter</i>	<i>2011/12 Annual Volume</i>	<i>2012/13 Projected Volume</i>	<i>Volume Difference</i>	<i>Cost/Copy Annual Cost</i>	<i>Recommendations</i>
Cheshire Medical Center							
Allergy - Reception							
Ricoh MPC300 32 CPM Black & Color	9,538	47,381	37,843	25,758	12,085	\$0.003900	None at this time.
S7215100342 / 12437574						\$147.59	
750,000 / 01/2011	60	80	20	0	20	\$0.04995	
Color Photocopier						\$1.00	
Connected							
IKON							
Allergy - Reception -							
Ricoh MP3351 33 CPM	0	33,227	33,227	60,700	-27,473	\$0.003900	None at this time.
V8315000202 / 12437413						\$129.59	
750,000 / 12/2009	0	0	0	0	0	\$0.00000	
Black Photocopier						\$0.00	
Connected							
IKON							
Anesthesia - S1459							
Ricoh MP201SPF 21 CPM	0	10,807	10,807	20,000	-9,193	\$0.003900	None at this time.
W3018501897 / 12437401						\$42.15	
500,000 / 02/2011	0	0	0	0	0	\$0.00000	
Black Photocopier						\$0.00	
Connected							
IKON							

Cheshire Medical Center

Date of Last Upgrade: 4/1/2011

<i>Make-Model / Speed</i>							
<i>Serial Number / Vendor ID</i>							
<i>Life / Intro Date</i>							
<i>Connectivity / Printer Exp Date</i>							
<i>Vendor</i>	<i>7/1/2011 Meter</i>	<i>6/30/2012 Meter</i>	<i>2011/12 Annual Volume</i>	<i>2012/13 Projected Volume</i>	<i>Volume Difference</i>	<i>Cost/Copy Annual Cost</i>	<i>Recommendations</i>
Cheshire Medical Center							
Bio Med Office							
Ricoh MPC300 32 CPM Black & Color	692	5,601	4,909	3,316	1,593	\$0.003900	None at this time.
S7206000260 / 12437524						\$19.15	
750,000 / 01/2011	521	1,601	1,080	0	1,080	\$0.04995	
Color Photocopier						\$53.95	
Connected							
IKON							
Business Analyst - Brendan							
Ricoh MPC300 32 CPM Black & Color	511	2,809	2,298	0	2,298	\$0.003900	None at this time.
S7206000313 / 12437712						\$8.96	
750,000 / 01/2011	365	1,299	934	0	934	\$0.04995	
Color Photocopier						\$46.65	
Connected							
IKON							
Cardiology							
Ricoh MP3351 33 CPM	0	12,293	12,293	37,833	-25,540	\$0.003900	None at this time.
V8314900840 / 12437397						\$47.94	
750,000 / 12/2009	0	0	0	0	0	\$0.00000	
Black Photocopier						\$0.00	
Connected							
IKON							

Cheshire Medical Center

Date of Last Upgrade: 4/1/2011

Make-Model / Speed Serial Number / Vendor ID Life / Intro Date Connectivity / Printer Exp Date Vendor	7/1/2011 Meter	6/30/2012 Meter	2011/12 Annual Volume	2012/13 Projected Volume	Volume Difference	Cost/Copy Annual Cost	Recommendations
Cheshire Medical Center							
Cardiology - 4th Floor							
Ricoh SP5100 45 CPM	2	100,938	100,936	108,779	-7,843	\$0.012000	None at this time.
S2109400050 / 12437605						\$1,211.23	
1,000,000 / 05/2007	0	0	0	0	0	\$0.00000	
Black Network Printer						\$0.00	
Connected							
IKON							
Cardiology - Nurses' Station							
Ricoh SP5100 45 CPM	1,500	22,351	20,851	19,821	1,030	\$0.012000	None at this time.
S2109300297 / 12437629						\$250.21	
1,000,000 / 05/2007	0	0	0	0	0	\$0.00000	
Black Network Printer						\$0.00	
Connected							
IKON							

Cheshire Medical Center

Date of Last Upgrade: 4/1/2011

Make-Model / Speed Serial Number / Vendor ID Life / Intro Date Connectivity / Printer Exp Date Vendor	7/1/2011 Meter	6/30/2012 Meter	2011/12 Annual Volume	2012/13 Projected Volume	Volume Difference	Cost/Copy Annual Cost	Recommendations
Cheshire Medical Center							
Central Reg - Back Hall							
Ricoh MP6001 60 CPM V6915100143 / 12437657 3,000,000 / 06/2009 Black Photocopier Connected IKON	14,154	177,710	163,556	152,809	10,747	\$0.003900 \$637.87 \$0.00000 \$0.00	None at this time.
Ricoh SP5100 45 CPM S2109300328 / 13427656 1,000,000 / 05/2007 Black Network Printer Connected IKON	2	39,324	39,322	20,000	19,322	\$0.012000 \$471.86 \$0.00000 \$0.00	None at this time.
Ricoh SP5100 45 CPM S2109300262 / 12437655 1,000,000 / 05/2007 Black Network Printer Connected IKON	2	18,100	18,098	36,004	-17,906	\$0.012000 \$217.18 \$0.00000 \$0.00	None at this time.

Cheshire Medical Center

Date of Last Upgrade: 4/1/2011

Make-Model / Speed Serial Number / Vendor ID Life / Intro Date Connectivity / Printer Exp Date Vendor	7/1/2011 Meter	6/30/2012 Meter	2011/12 Annual Volume	2012/13 Projected Volume	Volume Difference	Cost/Copy Annual Cost	Recommendations
Cheshire Medical Center							
Central Reg - Cashier							
Ricoh MP201SPF 21 CPM	0	29,272	29,272	26,898	2,374	\$0.003900	None at this time.
W3019102457 / 12437510						\$114.16	
500,000 / 02/2011	0	0	0	0	0	\$0.00000	
Black Photocopier						\$0.00	
Connected							
IKON							
Central Reg - Center Office							
Ricoh MP201SPF 21 CPM	2,437	23,360	20,923	13,841	7,082	\$0.003900	None at this time.
W3018501549 / 12437402						\$81.60	
500,000 / 02/2011	0	0	0	0	0	\$0.00000	
Black Photocopier						\$0.00	
Connected							
IKON							
Ricoh SP5100 45 CPM	20,426	81,616	61,190	91,716	-30,526	\$0.012000	None at this time.
S2109300109 / 12437508						\$734.28	
1,000,000 / 05/2007	0	0	0	0	0	\$0.00000	
Black Network Printer						\$0.00	
Connected							
IKON							

Cheshire Medical Center

Date of Last Upgrade: 4/1/2011

Make-Model / Speed Serial Number / Vendor ID Life / Intro Date Connectivity / Printer Exp Date Vendor	7/1/2011 Meter	6/30/2012 Meter	2011/12 Annual Volume	2012/13 Projected Volume	Volume Difference	Cost/Copy Annual Cost	Recommendations
Cheshire Medical Center							
Central Reg - GI							
Ricoh SP5100 45 CPM	2	24,095	24,093	30,730	-6,637	\$0.012000	None at this time.
S2109300356 / 12437646						\$289.12	
1,000,000 / 05/2007	0	0	0	0	0	\$0.00000	
Black Network Printer						\$0.00	
Connected							
IKON							
Central Reg - IP Admittance							
Ricoh SP5100 45 CPM	2	40,761	40,759	27,443	13,316	\$0.012000	None at this time.
S2109300281 / 12437654						\$489.11	
1,000,000 / 05/2007	0	0	0	0	0	\$0.00000	
Black Network Printer						\$0.00	
Connected							
IKON							
Central Reg - Patient Accounts							
Ricoh SP5100 45 CPM	0	13,833	13,833	0	13,833	\$0.012000	None at this time.
S2109200402 / 12437702						\$166.00	
1,000,000 / 05/2007	0	0	0	0	0	\$0.00000	
Black Network Printer						\$0.00	
Connected							
IKON							

Cheshire Medical Center

Date of Last Upgrade: 4/1/2011

Make-Model / Speed Serial Number / Vendor ID Life / Intro Date Connectivity / Printer Exp Date Vendor	7/1/2011 Meter	6/30/2012 Meter	2011/12 Annual Volume	2012/13 Projected Volume	Volume Difference	Cost/Copy Annual Cost	Recommendations
Cheshire Medical Center							
Central Reg - Pre-Registration							
Ricoh SP5100 45 CPM	4,335	20,833	16,498	15,864	634	\$0.012000	None at this time.
S2109200569 / 12437652						\$197.98	
1,000,000 / 05/2007	0	0	0	0	0	\$0.00000	
Black Network Printer						\$0.00	
Connected							
IKON							
Central Supply Office							
Ricoh SP5100 45 CPM	2	4,825	4,823	3,779	1,044	\$0.012000	None at this time.
S2109300371 /						\$57.88	
1,000,000 / 05/2007	0	0	0	0	0	\$0.00000	
Black Network Printer						\$0.00	
Connected							
IKON							
Doctor Dictation Area							
Ricoh SP5100 45 CPM	931	8,557	7,626	0	7,626	\$0.012000	None at this time.
S2109300335 / 12437564						\$91.51	
1,000,000 / 05/2007	0	0	0	0	0	\$0.00000	
Black Network Printer						\$0.00	
Connected							
IKON							

Cheshire Medical Center

Date of Last Upgrade: 4/1/2011

Make-Model / Speed Serial Number / Vendor ID Life / Intro Date Connectivity / Printer Exp Date Vendor	7/1/2011 Meter	6/30/2012 Meter	2011/12 Annual Volume	2012/13 Projected Volume	Volume Difference	Cost/Copy Annual Cost	Recommendations
Cheshire Medical Center							
ECC - Clinical Leader							
Ricoh SP3410DN 30 CPM	0	5,962	5,962	20,000	-14,038	\$0.012000	None at this time.
S5809600101 / 12437719						\$71.54	
750,000 / 03/2010	0	0	0	0	0	\$0.00000	
Black Network Printer						\$0.00	
Connected							
IKON							
ECC - Co-Pay							
Ricoh SP5100 45 CPM	0	2,041	2,041	23,751	-21,710	\$0.012000	None at this time.
S2109300040 / 12437699						\$24.49	
1,000,000 / 05/2007	0	0	0	0	0	\$0.00000	
Black Network Printer						\$0.00	
Connected							
IKON							
ECC - Director's Office							
Ricoh SP5100 45 CPM	2,176	15,169	12,993	49,763	-36,770	\$0.012000	None at this time.
S2109200556 / 12437720						\$155.92	
1,000,000 / 05/2007	0	0	0	0	0	\$0.00000	
Black Network Printer						\$0.00	
Connected							
IKON							

Cheshire Medical Center

Date of Last Upgrade: 4/1/2011

Make-Model / Speed Serial Number / Vendor ID Life / Intro Date Connectivity / Printer Exp Date Vendor	7/1/2011 Meter	6/30/2012 Meter	2011/12 Annual Volume	2012/13 Projected Volume	Volume Difference	Cost/Copy Annual Cost	Recommendations
Cheshire Medical Center							
ECC - Discharge Printer							
Ricoh SP5100 45 CPM	0	0	0	204,372	-204,372	\$0.012000	None at this time.
S2109200165 / 12437734						\$0.00	
1,000,000 / 05/2007	0	0	0	0	0	\$0.00000	
Black Network Printer						\$0.00	
Connected							
IKON							
ECC - Lab Station							
Ricoh SP5100 45 CPM	19,104	81,232	62,128	67,190	-5,062	\$0.012000	None at this time.
S2109200006 / 12437697						\$745.54	
1,000,000 / 05/2007	0	0	0	0	0	\$0.00000	
Black Network Printer						\$0.00	
Not Connected							
IKON							
ECC - Nurses' Station							
Ricoh MPC300 32 CPM Black & Color	9,980	46,049	36,069	5,540	30,529	\$0.003900	None at this time.
S7215100192 / 12437698						\$140.67	
750,000 / 01/2011	100	1,363	1,263	10,000	-8,737	\$0.04995	
Color Photocopier						\$63.09	
Connected							
IKON							

Cheshire Medical Center

Date of Last Upgrade: 4/1/2011

Make-Model / Speed Serial Number / Vendor ID Life / Intro Date Connectivity / Printer Exp Date Vendor	7/1/2011 Meter	6/30/2012 Meter	2011/12 Annual Volume	2012/13 Projected Volume	Volume Difference	Cost/Copy Annual Cost	Recommendations
Cheshire Medical Center							
ECC - Obstetrics 1							
Ricoh SP5100 45 CPM	2,458	9,041	6,583	20,000	-13,417	\$0.012000	None at this time.
S2109200493 / 12437721						\$79.00	
1,000,000 / 05/2007	0	0	0	0	0	\$0.00000	
Black Network Printer						\$0.00	
Connected							
IKON							
ECC - Radiology							
Ricoh SP5100 45 CPM	1,340	18,327	16,987	20,000	-3,013	\$0.012000	None at this time.
S2109600022 / 12437718						\$203.84	
1,000,000 / 05/2007	0	0	0	0	0	\$0.00000	
Black Network Printer						\$0.00	
Connected							
IKON							

Cheshire Medical Center

Date of Last Upgrade: 4/1/2011

<i>Make-Model / Speed</i>	<i>Serial Number / Vendor ID</i>	<i>Life / Intro Date</i>	<i>Connectivity / Printer Exp Date</i>	<i>Vendor</i>	<i>7/1/2011 Meter</i>	<i>6/30/2012 Meter</i>	<i>2011/12 Annual Volume</i>	<i>2012/13 Projected Volume</i>	<i>Volume Difference</i>	<i>Cost/Copy Annual Cost</i>	<i>Recommendations</i>
Cheshire Medical Center											
ECC - Registration											
Ricoh MP201SPF 21 CPM					0	24,768	24,768	19,355	5,413	\$0.003900	None at this time.
W3018501545 / 12437693										\$96.60	
500,000 / 02/2011					0	0	0	0	0	\$0.00000	
Black Photocopier										\$0.00	
Connected											
IKON											
Ricoh SP5100 45 CPM					10,532	49,874	39,342	47,207	-7,865	\$0.012000	None at this time.
S2109300361 / 12437694										\$472.10	
1,000,000 / 05/2007					0	0	0	0	0	\$0.00000	
Black Network Printer										\$0.00	
Connected											
IKON											
Ricoh SP5100 45 CPM					0	32,460	32,460	29,995	2,465	\$0.012000	None at this time.
S2109300190 / 12437695										\$389.52	
1,000,000 / 05/2007					0	0	0	0	0	\$0.00000	
Black Network Printer										\$0.00	
Connected											
IKON											

Cheshire Medical Center

Date of Last Upgrade: 4/1/2011

Make-Model / Speed Serial Number / Vendor ID Life / Intro Date Connectivity / Printer Exp Date Vendor	7/1/2011 Meter	6/30/2012 Meter	2011/12 Annual Volume	2012/13 Projected Volume	Volume Difference	Cost/Copy Annual Cost	Recommendations
Cheshire Medical Center							
Ricoh SP5100 45 CPM	12,089	89,136	77,047	63,173	13,874	\$0.012000	None at this time.
S2109300377 / 12437696						\$924.56	
1,000,000 / 05/2007	0	0	0	0	0	\$0.00000	
Black Network Printer						\$0.00	
Connected							
IKON							
ECC - Trauma Room							
Ricoh SP5100 45 CPM	0	1,326	1,326	20,000	-18,674	\$0.012000	None at this time.
S2109300053 / 12437717						\$15.91	
1,000,000 / 05/2007	0	0	0	0	0	\$0.00000	
Black Network Printer						\$0.00	
Not Connected							
IKON							
Education - Main Office							
Ricoh MPC4501 45 CPM	15,687	60,590	44,903	118,357	-73,454	\$0.003900	None at this time.
V9515100978 / 12437473						\$175.12	
1,000,000 / 11/2010	1,638	8,423	6,785	10,000	-3,215	\$0.04995	
Color Photocopier						\$338.91	
Connected							
IKON							

Cheshire Medical Center

Date of Last Upgrade: 4/1/2011

Make-Model / Speed Serial Number / Vendor ID Life / Intro Date Connectivity / Printer Exp Date Vendor	7/1/2011 Meter	6/30/2012 Meter	2011/12 Annual Volume	2012/13 Projected Volume	Volume Difference	Cost/Copy Annual Cost	Recommendations
Cheshire Medical Center							
EKG - Dartmouth-Hitchcock							
Ricoh MP201SPF 21 CPM	0	10,526	10,526	20,000	-9,474	\$0.003900	None at this time.
W3019102718 / 12437715						\$41.05	
500,000 / 02/2011	0	0	0	0	0	\$0.00000	
Black Photocopier						\$0.00	
Connected							
IKON							
EKG - Reading Room 4th Floor							
Ricoh SP5100 45 CPM	10,445	46,733	36,288	5,423	30,865	\$0.012000	None at this time.
S2109300278 / 12437628						\$435.46	
1,000,000 / 05/2007	0	0	0	0	0	\$0.00000	
Black Network Printer						\$0.00	
Connected							
IKON							
Emergency Command Ctr Conf							
Ricoh SP5100 45 CPM	2	5,033	5,031	0	5,031	\$0.012000	None at this time.
S2109300212 / 12437690						\$60.37	
1,000,000 / 05/2007	0	0	0	0	0	\$0.00000	
Black Network Printer						\$0.00	
Connected							
IKON							

Cheshire Medical Center

Date of Last Upgrade: 4/1/2011

<i>Make-Model / Speed</i>							
<i>Serial Number / Vendor ID</i>							
<i>Life / Intro Date</i>							
<i>Connectivity / Printer Exp Date</i>							
<i>Vendor</i>	<i>7/1/2011 Meter</i>	<i>6/30/2012 Meter</i>	<i>2011/12 Annual Volume</i>	<i>2012/13 Projected Volume</i>	<i>Volume Difference</i>	<i>Cost/Copy Annual Cost</i>	<i>Recommendations</i>
Cheshire Medical Center							
Engineering - Facilities							
Ricoh MPC300 32 CPM Black & Color	953	4,723	3,770	30,216	-26,446	\$0.003900	None at this time.
S7215100149 / 12437682						\$14.70	
750,000 / 01/2011	373	2,010	1,637	0	1,637	\$0.04995	
Color Photocopier						\$81.77	
Connected							
IKON							
Facilities							
Ricoh MPC3001 30 CPM	6,265	25,044	18,779	17,735	1,044	\$0.003900	None at this time.
V9315100201 / 12437422						\$73.24	
750,000 / 11/2010	2,018	8,351	6,333	25,377	-19,044	\$0.04995	
Color Photocopier						\$316.33	
Connected							
IKON							
Family Medicine -							
Ricoh MPC4501 45 CPM	13,590	93,387	79,797	46,226	33,571	\$0.003900	None at this time.
V9515100989 / 12437426						\$311.21	
1,000,000 / 11/2010	1,425	29,304	27,879	20,803	7,076	\$0.04995	
Color Photocopier						\$1,392.56	
Connected							
IKON							

Cheshire Medical Center

Date of Last Upgrade: 4/1/2011

Make-Model / Speed Serial Number / Vendor ID Life / Intro Date Connectivity / Printer Exp Date Vendor	7/1/2011 Meter	6/30/2012 Meter	2011/12 Annual Volume	2012/13 Projected Volume	Volume Difference	Cost/Copy Annual Cost	Recommendations
Cheshire Medical Center							
Family Medicine A - Back Hall							
Ricoh SP5100 45 CPM	674	1,972	1,298	2,647	-1,349	\$0.012000	None at this time.
S2109300303 / 12437581						\$15.58	
1,000,000 / 05/2007	0	0	0	0	0	\$0.00000	
Black Network Printer						\$0.00	
Connected							
IKON							
Family Medicine A - Flow Room							
Ricoh SP5100 45 CPM	9,329	65,970	56,641	60,084	-3,443	\$0.012000	None at this time.
S2109300376 / 12437580						\$679.69	
1,000,000 / 05/2007	0	0	0	0	0	\$0.00000	
Black Network Printer						\$0.00	
Connected							
IKON							
Family Medicine A - Hall 1							
Ricoh SP5100 45 CPM	1,400	5,272	3,872	5,198	-1,326	\$0.012000	None at this time.
S2109300319 / 12437579						\$46.46	
1,000,000 / 05/2007	0	0	0	0	0	\$0.00000	
Black Network Printer						\$0.00	
Connected							
IKON							

Cheshire Medical Center

Date of Last Upgrade: 4/1/2011

Make-Model / Speed Serial Number / Vendor ID Life / Intro Date Connectivity / Printer Exp Date Vendor	7/1/2011 Meter	6/30/2012 Meter	2011/12 Annual Volume	2012/13 Projected Volume	Volume Difference	Cost/Copy Annual Cost	Recommendations
Cheshire Medical Center							
Family Medicine A - Hall 2							
Ricoh SP5100 45 CPM	1,415	4,319	2,904	4,794	-1,890	\$0.012000	None at this time.
S2109300332 / 12437582						\$34.85	
1,000,000 / 05/2007	0	0	0	0	0	\$0.00000	
Black Network Printer						\$0.00	
Connected							
IKON							
Family Medicine A - Reception							
Ricoh MP201SPF 21 CPM	0	52,564	52,564	10,136	42,428	\$0.003900	None at this time.
W3018501909 / 12437583						\$205.00	
500,000 / 02/2011	0	0	0	0	0	\$0.00000	
Black Photocopier						\$0.00	
Connected							
IKON							
Family Medicine B - Back Hall							
Ricoh SP5100 45 CPM	878	3,909	3,031	1,646	1,385	\$0.012000	None at this time.
S2109300348 / 12437620						\$36.37	
1,000,000 / 05/2007	0	0	0	0	0	\$0.00000	
Black Network Printer						\$0.00	
Connected							
IKON							

Cheshire Medical Center

Date of Last Upgrade: 4/1/2011

Make-Model / Speed Serial Number / Vendor ID Life / Intro Date Connectivity / Printer Exp Date Vendor	7/1/2011 Meter	6/30/2012 Meter	2011/12 Annual Volume	2012/13 Projected Volume	Volume Difference	Cost/Copy Annual Cost	Recommendations
Cheshire Medical Center							
Family Medicine B - Hall 1							
Ricoh SP5100 45 CPM	429	3,731	3,302	3,760	-458	\$0.012000	None at this time.
S2109300318 / 12437586						\$39.62	
1,000,000 / 05/2007	0	0	0	0	0	\$0.00000	
Black Network Printer						\$0.00	
Connected							
IKON							
Family Medicine B - Hall 2							
Ricoh SP5100 45 CPM	1,370	6,635	5,265	4,993	272	\$0.012000	None at this time.
S2109300347 / 12437621						\$63.18	
1,000,000 / 05/2007	0	0	0	0	0	\$0.00000	
Black Network Printer						\$0.00	
Connected							
IKON							
Family Medicine B - Phone Room							
Ricoh MP201SPF 21 CPM	0	73,104	73,104	7,560	65,544	\$0.003900	None at this time.
W3019102424 / 12437562						\$285.11	
500,000 / 02/2011	0	0	0	0	0	\$0.00000	
Black Photocopier						\$0.00	
Connected							
IKON							

Cheshire Medical Center

Date of Last Upgrade: 4/1/2011

Make-Model / Speed Serial Number / Vendor ID Life / Intro Date Connectivity / Printer Exp Date Vendor	7/1/2011 Meter	6/30/2012 Meter	2011/12 Annual Volume	2012/13 Projected Volume	Volume Difference	Cost/Copy Annual Cost	Recommendations
Cheshire Medical Center							
Family Medicine B - Reception							
Ricoh MP201SPF 21 CPM	0	9,021	9,021	46,248	-37,227	\$0.003900	None at this time.
W3019102719 / 12437585						\$35.18	
500,000 / 02/2011	0	0	0	0	0	\$0.00000	
Black Photocopier						\$0.00	
Connected							
IKON							
Family Medicine C - Hall 2							
Ricoh SP5100 45 CPM	3,725	11,226	7,501	11,817	-4,316	\$0.012000	None at this time.
S2109300132 / 12437623						\$90.01	
1,000,000 / 05/2007	0	0	0	0	0	\$0.00000	
Black Network Printer						\$0.00	
Connected							
IKON							
Family Medicine C - Phone Room							
Ricoh SP5100 45 CPM	6,764	33,763	26,999	47,338	-20,339	\$0.012000	None at this time.
S2109300343 / 12437622						\$323.99	
1,000,000 / 05/2007	0	0	0	0	0	\$0.00000	
Black Network Printer						\$0.00	
Connected							
IKON							

Cheshire Medical Center

Date of Last Upgrade: 4/1/2011

Make-Model / Speed Serial Number / Vendor ID Life / Intro Date Connectivity / Printer Exp Date Vendor	7/1/2011 Meter	6/30/2012 Meter	2011/12 Annual Volume	2012/13 Projected Volume	Volume Difference	Cost/Copy Annual Cost	Recommendations
Cheshire Medical Center							
Family Medicine C - Reception							
Ricoh MP201SPF 21 CPM	10,403	47,347	36,944	0	36,944	\$0.003900	None at this time.
W3018501560 / 12437491						\$144.08	
500,000 / 02/2011	0	0	0	0	0	\$0.00000	
Black Photocopier						\$0.00	
Connected							
IKON							
Family Medicine C -Back Hall							
Ricoh SP5100 45 CPM	1,461	8,250	6,789	4,875	1,914	\$0.012000	None at this time.
S2109300362 / 12437624						\$81.47	
1,000,000 / 05/2007	0	0	0	0	0	\$0.00000	
Black Network Printer						\$0.00	
Connected							
IKON							
Family Medicine D - Flow Room							
Ricoh MPC300 32 CPM Black & Color	7,120	30,201	23,081	60,976	-37,895	\$0.003900	None at this time.
S7215100187 / 12437617						\$90.02	
750,000 / 01/2011	150	621	471	0	471	\$0.04995	
Color Photocopier						\$23.53	
Connected							
IKON							

Cheshire Medical Center

Date of Last Upgrade: 4/1/2011

Make-Model / Speed Serial Number / Vendor ID Life / Intro Date Connectivity / Printer Exp Date Vendor	7/1/2011 Meter	6/30/2012 Meter	2011/12 Annual Volume	2012/13 Projected Volume	Volume Difference	Cost/Copy Annual Cost	Recommendations
Cheshire Medical Center							
Family Medicine D - IM1							
Ricoh SP5100 45 CPM	3,498	16,186	12,688	10,749	1,939	\$0.012000	None at this time.
S2109300324 / 12437618						\$152.26	
1,000,000 / 05/2007	0	0	0	0	0	\$0.00000	
Black Network Printer						\$0.00	
Connected							
IKON							
Family Medicine D - IM2							
Ricoh SP5100 45 CPM	0	16,394	16,394	8,859	7,535	\$0.012000	None at this time.
S2109300052 / 12437615						\$196.73	
1,000,000 / 05/2007	0	0	0	0	0	\$0.00000	
Black Network Printer						\$0.00	
Connected							
IKON							

Cheshire Medical Center

Date of Last Upgrade: 4/1/2011

<i>Make-Model / Speed</i>							
<i>Serial Number / Vendor ID</i>							
<i>Life / Intro Date</i>							
<i>Connectivity / Printer Exp Date</i>							
<i>Vendor</i>	<i>7/1/2011 Meter</i>	<i>6/30/2012 Meter</i>	<i>2011/12 Annual Volume</i>	<i>2012/13 Projected Volume</i>	<i>Volume Difference</i>	<i>Cost/Copy Annual Cost</i>	<i>Recommendations</i>
Cheshire Medical Center							
Family Medicine D - Phone Room							
Ricoh MP201SPF 21 CPM	11,858	44,032	32,174	0	32,174	\$0.003900	None at this time.
W3018501555 / 12437490						\$125.48	
500,000 / 02/2011	0	0	0	0	0	\$0.00000	
Black Photocopier						\$0.00	
Connected							
IKON							
Ricoh SP5100 45 CPM	1,573	9,609	8,036	6,114	1,922	\$0.012000	None at this time.
S2109300003 / 12437489						\$96.43	
1,000,000 / 05/2007	0	0	0	0	0	\$0.00000	
Black Network Printer						\$0.00	
Connected							
IKON							
Ricoh SP5100 45 CPM	11,407	44,746	33,339	58,587	-25,248	\$0.012000	None at this time.
S2109300273 / 12437488						\$400.07	
1,000,000 / 05/2007	0	0	0	0	0	\$0.00000	
Black Network Printer						\$0.00	
Connected							
IKON							

Cheshire Medical Center

Date of Last Upgrade: 4/1/2011

Make-Model / Speed Serial Number / Vendor ID Life / Intro Date Connectivity / Printer Exp Date Vendor	7/1/2011 Meter	6/30/2012 Meter	2011/12 Annual Volume	2012/13 Projected Volume	Volume Difference	Cost/Copy Annual Cost	Recommendations
Cheshire Medical Center							
Family Medicine D - Reception							
Ricoh MP201SPF 21 CPM	0	5,773	5,773	0	5,773	\$0.003900	None at this time.
W3018501558 / 12437619						\$22.51	
500,000 / 02/2011	0	0	0	0	0	\$0.00000	
Black Photocopier						\$0.00	
Connected							
IKON							
Family Medicine D - Singer							
Ricoh SP5100 45 CPM	2,526	3,375	849	3,502	-2,653	\$0.012000	None at this time.
S2109300353 / 12437616						\$10.19	
1,000,000 / 05/2007	0	0	0	0	0	\$0.00000	
Black Network Printer						\$0.00	
Connected							
IKON							
Farnum - Rehab - Admissions							
Ricoh MPC300 32 CPM Black & Color	2,852	37,546	34,694	2,680	32,014	\$0.003900	None at this time.
S7214900317 / 12437438						\$135.31	
750,000 / 01/2011	33	1,945	1,912	0	1,912	\$0.04995	
Color Photocopier						\$95.50	
Connected							
IKON							

Cheshire Medical Center

Date of Last Upgrade: 4/1/2011

<i>Make-Model / Speed</i>							
<i>Serial Number / Vendor ID</i>							
<i>Life / Intro Date</i>							
<i>Connectivity / Printer Exp Date</i>							
<i>Vendor</i>	<i>7/1/2011 Meter</i>	<i>6/30/2012 Meter</i>	<i>2011/12 Annual Volume</i>	<i>2012/13 Projected Volume</i>	<i>Volume Difference</i>	<i>Cost/Copy Annual Cost</i>	<i>Recommendations</i>
Cheshire Medical Center							
<i>Farnum - Rehab - Nurses'</i>							
Ricoh MPC300 32 CPM Black & Color	9,064	72,353	63,289	56,521	6,768	\$0.003900	None at this time.
S7206000258 / 12437609						\$246.83	
750,000 / 01/2011	1,317	5,232	3,915	0	3,915	\$0.04995	
Color Photocopier						\$195.55	
Connected							
IKON							
Ricoh SP5100 45 CPM	745	5,911	5,166	22,955	-17,789	\$0.012000	None at this time.
S2109300167 / 12437625						\$61.99	
1,000,000 / 05/2007	0	0	0	0	0	\$0.00000	
Black Network Printer						\$0.00	
Connected							
IKON							
<i>Farnum - Rehab - Printer</i>							
Ricoh MP5001 50 CPM	11,737	46,583	34,846	101,664	-66,818	\$0.003900	None at this time.
V8015001300 / 12437396						\$135.90	
1,000,000 / 11/2010	0	0	0	0	0	\$0.00000	
Black Photocopier						\$0.00	
Connected							
IKON							

Cheshire Medical Center

Date of Last Upgrade: 4/1/2011

Make-Model / Speed Serial Number / Vendor ID Life / Intro Date Connectivity / Printer Exp Date Vendor	7/1/2011 Meter	6/30/2012 Meter	2011/12 Annual Volume	2012/13 Projected Volume	Volume Difference	Cost/Copy Annual Cost	Recommendations
Cheshire Medical Center							
Farnum Outpatient - Back							
Ricoh SP5100 45 CPM	13,822	65,818	51,996	47,158	4,838	\$0.012000	None at this time.
S2109300036 / 12437678						\$623.95	
1,000,000 / 05/2007	0	0	0	0	0	\$0.00000	
Black Network Printer						\$0.00	
Connected							
IKON							
Farnum Outpatient - Back							
Ricoh MPC300 32 CPM Black & Color	4,199	18,758	14,559	10,962	3,597	\$0.003900	None at this time.
S7206000224 / 12437679						\$56.78	
750,000 / 01/2011	18	30	12	0	12	\$0.04995	
Color Photocopier						\$0.60	
Connected							
IKON							
Farnum Outpatient - Chart Room							
Ricoh MP5001 50 CPM	0	106,460	106,460	84,658	21,802	\$0.003900	None at this time.
V8015100546 / 12437676						\$415.19	
1,000,000 / 11/2010	0	0	0	0	0	\$0.00000	
Black Photocopier						\$0.00	
Connected							
IKON							

Cheshire Medical Center

Date of Last Upgrade: 4/1/2011

Make-Model / Speed Serial Number / Vendor ID Life / Intro Date Connectivity / Printer Exp Date Vendor	7/1/2011 Meter	6/30/2012 Meter	2011/12 Annual Volume	2012/13 Projected Volume	Volume Difference	Cost/Copy Annual Cost	Recommendations
Cheshire Medical Center							
Farnum Outpatient - HLC							
Ricoh MP201SPF 21 CPM	0	804	804	3,721	-2,917	\$0.003900	None at this time.
W3018501556 / 12437677						\$3.14	
500,000 / 02/2011	0	0	0	0	0	\$0.00000	
Black Photocopier						\$0.00	
Connected							
IKON							
Farnum Outpatient - Reception							
Ricoh MP201SPF 21 CPM	0	10,372	10,372	0	10,372	\$0.003900	None at this time.
W3018501910 / 12437673						\$40.45	
500,000 / 02/2011	0	0	0	0	0	\$0.00000	
Black Photocopier						\$0.00	
Connected							
IKON							
Ricoh SP5100 45 CPM	1,443	6,613	5,170	5,286	-116	\$0.012000	None at this time.
S2109200073 / 12437643						\$62.04	
1,000,000 / 05/2007	0	0	0	0	0	\$0.00000	
Black Network Printer						\$0.00	
Connected							
IKON							
Ricoh SP5100 45 CPM	16,708	72,781	56,073	51,375	4,698	\$0.012000	None at this time.
S2109300108 / 12437674						\$672.88	
1,000,000 / 05/2007	0	0	0	0	0	\$0.00000	
Black Network Printer						\$0.00	
Connected							
IKON							

Cheshire Medical Center

Date of Last Upgrade: 4/1/2011

Make-Model / Speed Serial Number / Vendor ID Life / Intro Date Connectivity / Printer Exp Date Vendor	7/1/2011 Meter	6/30/2012 Meter	2011/12 Annual Volume	2012/13 Projected Volume	Volume Difference	Cost/Copy Annual Cost	Recommendations
Cheshire Medical Center							
Finance - Cashier's Office							
Ricoh SP5100 45 CPM	16,711	82,328	65,617	43,270	22,347	\$0.012000	None at this time.
S2109200004 / 12437701						\$787.40	
1,000,000 / 05/2007	0	0	0	0	0	\$0.00000	
Black Network Printer						\$0.00	
Connected							
IKON							
Finance - Patient Accounts							
Ricoh MP5001 50 CPM	0	156,177	156,177	164,845	-8,668	\$0.003900	None at this time.
V8005800656 / 12437440						\$609.09	
1,000,000 / 11/2010	0	0	0	0	0	\$0.00000	
Black Photocopier						\$0.00	
Connected							
IKON							
Food Service - Dietary Aide							
Ricoh MPC3001 30 CPM	9,019	55,106	46,087	56,689	-10,602	\$0.003900	None at this time.
V9315100221 / 12437680						\$179.74	
750,000 / 11/2010	854	7,337	6,483	19,515	-13,032	\$0.04995	
Color Photocopier						\$323.83	
Connected							
IKON							

Cheshire Medical Center

Date of Last Upgrade: 4/1/2011

Make-Model / Speed Serial Number / Vendor ID Life / Intro Date Connectivity / Printer Exp Date Vendor	7/1/2011 Meter	6/30/2012 Meter	2011/12 Annual Volume	2012/13 Projected Volume	Volume Difference	Cost/Copy Annual Cost	Recommendations
Cheshire Medical Center							
Food Service - Kitchen							
Ricoh SP5100 45 CPM	2	9,315	9,313	6,072	3,241	\$0.012000	None at this time.
S2109300182 / 12437711						\$111.76	
1,000,000 / 05/2007	0	0	0	0	0	\$0.00000	
Black Network Printer						\$0.00	
Connected							
IKON							
General Surgery							
Ricoh MPC300 32 CPM Black & Color	9,106	51,496	42,390	40,774	1,616	\$0.003900	None at this time.
S7206000261 / 12437405						\$165.32	
750,000 / 01/2011	843	3,631	2,788	0	2,788	\$0.04995	
Color Photocopier						\$139.26	
Connected							
IKON							
General Surgery - Scheduling							
Ricoh MPC4501 45 CPM	18,180	98,588	80,408	201,688	-121,280	\$0.003900	None at this time.
V9515100991 / 12437642						\$313.59	
1,000,000 / 11/2010	330	9,102	8,772	0	8,772	\$0.04995	
Color Photocopier						\$438.16	
Connected							
IKON							

Cheshire Medical Center

Date of Last Upgrade: 4/1/2011

Make-Model / Speed Serial Number / Vendor ID Life / Intro Date Connectivity / Printer Exp Date Vendor	7/1/2011 Meter	6/30/2012 Meter	2011/12 Annual Volume	2012/13 Projected Volume	Volume Difference	Cost/Copy Annual Cost	Recommendations
Cheshire Medical Center							
General Surgery & Podiatry							
Ricoh SP5100 45 CPM	0	708	708	690	18	\$0.012000	None at this time.
S2109300257 / 12437533						\$8.50	
1,000,000 / 05/2007	0	0	0	0	0	\$0.00000	
Black Network Printer						\$0.00	
Connected							
IKON							
GI - Nurses' Station							
Ricoh MP201SPF 21 CPM	0	19,174	19,174	0	19,174	\$0.003900	None at this time.
W3018501584 / 12437527						\$74.78	
500,000 / 02/2011	0	0	0	0	0	\$0.00000	
Black Photocopier						\$0.00	
Connected							
IKON							
Ricoh MPC300 32 CPM Black & Color	0	18,299	18,299	22,654	-4,355	\$0.003900	None at this time.
S7206000262 / 12437526						\$71.37	
750,000 / 01/2011	1	2,645	2,644	0	2,644	\$0.04995	
Color Photocopier						\$132.07	
Connected							
IKON							
Ricoh SP5100 45 CPM	885	36,453	35,568	28,288	7,280	\$0.012000	None at this time.
S2109300171 / 12437493						\$426.82	
1,000,000 / 05/2007	0	0	0	0	0	\$0.00000	
Black Network Printer						\$0.00	
Connected							
IKON							

Cheshire Medical Center

Date of Last Upgrade: 4/1/2011

Make-Model / Speed Serial Number / Vendor ID Life / Intro Date Connectivity / Printer Exp Date Vendor	7/1/2011 Meter	6/30/2012 Meter	2011/12 Annual Volume	2012/13 Projected Volume	Volume Difference	Cost/Copy Annual Cost	Recommendations
Cheshire Medical Center							
GI - Schedulers							
Ricoh SP5100 45 CPM	1,495	7,133	5,638	4,855	783	\$0.012000	None at this time.
S2109300142 / 12437708						\$67.66	
1,000,000 / 05/2007	0	0	0	0	0	\$0.00000	
Black Network Printer						\$0.00	
Connected							
IKON							
GI - Special Services							
Ricoh MP201SPF 21 CPM	0	15,239	15,239	0	15,239	\$0.003900	None at this time.
W3019101420 / 12437494						\$59.43	
500,000 / 02/2011	0	0	0	0	0	\$0.00000	
Black Photocopier						\$0.00	
Connected							
IKON							
Ricoh SPC430 37 CPM	779	17,421	16,642	38,984	-22,342	\$0.012000	None at this time.
S9318501261 / 12437495						\$199.70	
750,000 / 07/2010	116	17,292	17,176	17,051	125	\$0.08325	
Color Network Printer						\$1,429.90	
Connected							
IKON							

Cheshire Medical Center

Date of Last Upgrade: 4/1/2011

Make-Model / Speed Serial Number / Vendor ID Life / Intro Date Connectivity / Printer Exp Date Vendor	7/1/2011 Meter	6/30/2012 Meter	2011/12 Annual Volume	2012/13 Projected Volume	Volume Difference	Cost/Copy Annual Cost	Recommendations
Cheshire Medical Center							
Hospitalists' On-Call Room							
Ricoh SP5100 45 CPM	0	0	0	0	0	\$0.012000	None at this time.
S2399400155 / 12631788						\$0.00	
1,000,000 / 05/2007	0	0	0	0	0	\$0.00000	
Black Network Printer						\$0.00	
Not Connected							
IKON							
HUC Supervisor - Betty Walker							
Ricoh SPC320DN 26 CPM	0	7,836	7,836	0	7,836	\$0.012000	None at this time.
S9918500123 / 12437531						\$94.03	
500,000 / 02/2011	0	3,447	3,447	0	3,447	\$0.08325	
Color Network Printer						\$286.96	
Connected							
IKON							
Human Resources							
Ricoh MPC4501 45 CPM	22,434	143,929	121,495	145,328	-23,833	\$0.003900	None at this time.
V9515100973 / 12437390						\$473.83	
1,000,000 / 11/2010	0	19,922	19,922	17,476	2,446	\$0.04995	
Color Photocopier						\$995.10	
Connected							
IKON							

Cheshire Medical Center

Date of Last Upgrade: 4/1/2011

Make-Model / Speed Serial Number / Vendor ID Life / Intro Date Connectivity / Printer Exp Date Vendor	7/1/2011 Meter	6/30/2012 Meter	2011/12 Annual Volume	2012/13 Projected Volume	Volume Difference	Cost/Copy Annual Cost	Recommendations
Cheshire Medical Center							
ICU							
Ricoh MP3351 33 CPM	2,749	27,057	24,308	55,598	-31,290	\$0.003900	None at this time.
V8315000205 / 12437411						\$94.80	
750,000 / 12/2009	0	0	0	0	0	\$0.00000	
Black Photocopier						\$0.00	
Connected							
IKON							
ICU - Family Room							
Ricoh SP5100 45 CPM	2	7,468	7,466	121,394	-113,928	\$0.012000	None at this time.
S2109200665 / 12437725						\$89.59	
1,000,000 / 05/2007	0	0	0	0	0	\$0.00000	
Black Network Printer						\$0.00	
Connected							
IKON							

Cheshire Medical Center

Date of Last Upgrade: 4/1/2011

Make-Model / Speed Serial Number / Vendor ID Life / Intro Date Connectivity / Printer Exp Date Vendor	7/1/2011 Meter	6/30/2012 Meter	2011/12 Annual Volume	2012/13 Projected Volume	Volume Difference	Cost/Copy Annual Cost	Recommendations
Cheshire Medical Center							
ICU - Nurses' Station							
Ricoh MP201SPF 21 CPM	0	27,258	27,258	20,000	7,258	\$0.003900	None at this time.
W3018501577 / 12437400						\$106.31	
500,000 / 02/2011	0	0	0	0	0	\$0.00000	
Black Photocopier						\$0.00	
Connected							
IKON							
Ricoh SP5100 45 CPM	0	73,456	73,456	70,113	3,343	\$0.012000	None at this time.
S2109600034 / 12437487						\$881.47	
1,000,000 / 05/2007	0	0	0	0	0	\$0.00000	
Black Network Printer						\$0.00	
Connected							
IKON							
IS - Analysis Workplace							
Ricoh SP5100 45 CPM	0	15,015	15,015	32,690	-17,675	\$0.012000	None at this time.
S2109200126 / 12437689						\$180.18	
1,000,000 / 05/2007	0	0	0	0	0	\$0.00000	
Black Network Printer						\$0.00	
Connected							
IKON							

Cheshire Medical Center

Date of Last Upgrade: 4/1/2011

Make-Model / Speed Serial Number / Vendor ID Life / Intro Date Connectivity / Printer Exp Date Vendor	7/1/2011 Meter	6/30/2012 Meter	2011/12 Annual Volume	2012/13 Projected Volume	Volume Difference	Cost/Copy Annual Cost	Recommendations
Cheshire Medical Center							
IS - Operator's Room							
Ricoh MPC400 42 CPM	17,340	72,113	54,773	108,352	-53,579	\$0.003900	None at this time.
S7515100027 / 12437419						\$213.61	
1,000,000 / 01/2011	2,752	6,829	4,077	0	4,077	\$0.04995	
Color Photocopier						\$203.65	
Connected							
IKON							
Kingsbury Unit - Doctors on							
Ricoh SP5100 45 CPM	4,219	11,990	7,771	0	7,771	\$0.012000	None at this time.
S2109200704 /						\$93.25	
1,000,000 / 05/2007	0	0	0	0	0	\$0.00000	
Black Network Printer						\$0.00	
Connected							
IKON							
Kingsbury Unit - Labels							
Ricoh SP5100 45 CPM	1,018	3,245	2,227	3,627	-1,400	\$0.012000	None at this time.
S2118500013 / 12437492						\$26.72	
1,000,000 / 05/2007	0	0	0	0	0	\$0.00000	
Black Network Printer						\$0.00	
Connected							
IKON							

Cheshire Medical Center

Date of Last Upgrade: 4/1/2011

Make-Model / Speed Serial Number / Vendor ID Life / Intro Date Connectivity / Printer Exp Date Vendor	7/1/2011 Meter	6/30/2012 Meter	2011/12 Annual Volume	2012/13 Projected Volume	Volume Difference	Cost/Copy Annual Cost	Recommendations
Cheshire Medical Center							
Kingsbury Unit - Nurses' Station							
Ricoh MPC4501 45 CPM	14,243	72,264	58,021	109,131	-51,110	\$0.003900	None at this time.
V9515100983 / 12437399						\$226.28	
1,000,000 / 11/2010	4,518	28,123	23,605	0	23,605	\$0.04995	
Color Photocopier						\$1,179.07	
Connected							
IKON							
Kingsbury Unit - Oncology							
Ricoh SP5100 45 CPM	2,106	8,891	6,785	8,267	-1,482	\$0.012000	None at this time.
S2109300213 / 12437724						\$81.42	
1,000,000 / 05/2007	0	0	0	0	0	\$0.00000	
Black Network Printer						\$0.00	
Connected							
IKON							
Kingsbury Unit - Scheduling							
Ricoh SPC430 37 CPM	0	2,216	2,216	2,061	155	\$0.012000	None at this time.
S9918500208 / 12437633						\$26.59	
750,000 / 07/2010	0	1,585	1,585	8,063	-6,478	\$0.08325	
Color Network Printer						\$131.95	
Connected							
IKON							

Cheshire Medical Center

Date of Last Upgrade: 4/1/2011

Make-Model / Speed Serial Number / Vendor ID Life / Intro Date Connectivity / Printer Exp Date Vendor	7/1/2011 Meter	6/30/2012 Meter	2011/12 Annual Volume	2012/13 Projected Volume	Volume Difference	Cost/Copy Annual Cost	Recommendations
Cheshire Medical Center							
Lab - Back Room							
Ricoh MP3351 33 CPM V8314900835 / 12437404 750,000 / 12/2009 Black Photocopier Connected IKON	0	14,958	14,958	41,274	-26,316	\$0.003900 \$58.34 \$0.00000 \$0.00	None at this time.
Ricoh SP5100 45 CPM S2109300241 / 12437671 1,000,000 / 05/2007 Black Network Printer Connected IKON	2	26,307	26,305	24,892	1,413	\$0.012000 \$315.66 \$0.00000 \$0.00	None at this time.
Lab - CP							
Ricoh SP5100 45 CPM S2109200035 / 12437670 1,000,000 / 05/2007 Black Network Printer Connected IKON	9,772	42,064	32,292	33,597	-1,305	\$0.012000 \$387.50 \$0.00000 \$0.00	None at this time.

Cheshire Medical Center

Date of Last Upgrade: 4/1/2011

<i>Make-Model / Speed</i>							
<i>Serial Number / Vendor ID</i>							
<i>Life / Intro Date</i>							
<i>Connectivity / Printer Exp Date</i>							
<i>Vendor</i>	<i>7/1/2011 Meter</i>	<i>6/30/2012 Meter</i>	<i>2011/12 Annual Volume</i>	<i>2012/13 Projected Volume</i>	<i>Volume Difference</i>	<i>Cost/Copy Annual Cost</i>	<i>Recommendations</i>
Cheshire Medical Center							
Lab - Cytology Screening							
Ricoh MPC300 32 CPM Black & Color	1,584	8,186	6,602	15,609	-9,007	\$0.003900	None at this time.
S7206000320 / 12437636						\$25.75	
750,000 / 01/2011	1,491	2,848	1,357	0	1,357	\$0.04995	
Color Photocopier						\$67.78	
Connected							
IKON							
Lab - Hall							
Ricoh SP5100 45 CPM	3	57,268	57,265	62,323	-5,058	\$0.012000	None at this time.
S2109200466 / 12437669						\$687.18	
1,000,000 / 05/2007	0	0	0	0	0	\$0.00000	
Black Network Printer						\$0.00	
Connected							
IKON							
Lab - Microbiology							
Ricoh MP201SPF 21 CPM	2,288	13,113	10,825	8,531	2,294	\$0.003900	None at this time.
W3018501552 / 12437403						\$42.22	
500,000 / 02/2011	0	0	0	0	0	\$0.00000	
Black Photocopier						\$0.00	
Connected							
IKON							

Cheshire Medical Center

Date of Last Upgrade: 4/1/2011

<i>Make-Model / Speed</i>							
<i>Serial Number / Vendor ID</i>							
<i>Life / Intro Date</i>							
<i>Connectivity / Printer Exp Date</i>							
<i>Vendor</i>	<i>7/1/2011 Meter</i>	<i>6/30/2012 Meter</i>	<i>2011/12 Annual Volume</i>	<i>2012/13 Projected Volume</i>	<i>Volume Difference</i>	<i>Cost/Copy Annual Cost</i>	<i>Recommendations</i>
Cheshire Medical Center							
Lab - Office							
Ricoh MPC300 32 CPM Black & Color	15,334	79,706	64,372	6,159	58,213	\$0.003900	High usage
S7215100269 / 12437668						\$251.05	
750,000 / 01/2011	427	2,310	1,883	0	1,883	\$0.04995	
Color Photocopier						\$94.06	
Connected							
IKON							
Lab - Pathology							
Ricoh SP5100 45 CPM	2	9,545	9,543	26,941	-17,398	\$0.012000	None at this time.
S2109300091 / 12437638						\$114.52	
1,000,000 / 05/2007	0	0	0	0	0	\$0.00000	
Black Network Printer						\$0.00	
Connected							
IKON							
Lab - Pathology Support							
Ricoh MPC300 32 CPM Black & Color	698	14,848	14,150	950	13,200	\$0.003900	None at this time.
S7206000265 / 12437637						\$55.19	
750,000 / 01/2011	672	3,920	3,248	2,214	1,034	\$0.04995	
Color Photocopier						\$162.24	
Connected							
IKON							

Cheshire Medical Center

Date of Last Upgrade: 4/1/2011

Make-Model / Speed Serial Number / Vendor ID Life / Intro Date Connectivity / Printer Exp Date Vendor	7/1/2011 Meter	6/30/2012 Meter	2011/12 Annual Volume	2012/13 Projected Volume	Volume Difference	Cost/Copy Annual Cost	Recommendations
Cheshire Medical Center							
Lab - Registration							
Ricoh MP201SPF 21 CPM W3018501874 / 12437666 500,000 / 02/2011 Black Photocopier Connected IKON	0	3,526	3,526	1,990	1,536	\$0.003900 \$13.75 \$0.00000 \$0.00	None at this time.
Ricoh SP5100 45 CPM S2109300277 / 12437667 1,000,000 / 05/2007 Black Network Printer Connected IKON	18,069	78,017	59,948	64,163	-4,215	\$0.012000 \$719.38 \$0.00000 \$0.00	None at this time.
Labor & Delivery 2nd Floor							
Ricoh MP201SPF 21 CPM W3019102464 / 500,000 / 02/2011 Black Photocopier Not Connected IKON	0	9,199	9,199	0	9,199	\$0.003900 \$35.88 \$0.00000 \$0.00	None at this time.

Cheshire Medical Center

Date of Last Upgrade: 4/1/2011

<i>Make-Model / Speed</i>							
<i>Serial Number / Vendor ID</i>							
<i>Life / Intro Date</i>							
<i>Connectivity / Printer Exp Date</i>							
<i>Vendor</i>	<i>7/1/2011 Meter</i>	<i>6/30/2012 Meter</i>	<i>2011/12 Annual Volume</i>	<i>2012/13 Projected Volume</i>	<i>Volume Difference</i>	<i>Cost/Copy Annual Cost</i>	<i>Recommendations</i>
Cheshire Medical Center							
Mammography - Supervisor							
Ricoh MPC300 32 CPM Black & Color	0	24,959	24,959	53,890	-28,931	\$0.003900	None at this time.
S7206000160 / 12437662						\$97.34	
750,000 / 01/2011	0	823	823	0	823	\$0.04995	
Color Photocopier						\$41.11	
Connected							
IKON							
Materials Management - Office							
Ricoh MPC300 32 CPM Black & Color	9,677	51,968	42,291	46,143	-3,852	\$0.003900	None at this time.
S7206000268 / 12437511						\$164.93	
750,000 / 01/2011	1,437	3,090	1,653	0	1,653	\$0.04995	
Color Photocopier						\$82.57	
Connected							
IKON							
Materials Management -							
Ricoh SP5100 45 CPM	2	21,711	21,709	19,026	2,683	\$0.012000	None at this time.
S2109300023 / 12437476						\$260.51	
1,000,000 / 05/2007	0	0	0	0	0	\$0.00000	
Black Network Printer						\$0.00	
Connected							
IKON							

Cheshire Medical Center

Date of Last Upgrade: 4/1/2011

Make-Model / Speed Serial Number / Vendor ID Life / Intro Date Connectivity / Printer Exp Date Vendor	7/1/2011 Meter	6/30/2012 Meter	2011/12 Annual Volume	2012/13 Projected Volume	Volume Difference	Cost/Copy Annual Cost	Recommendations
Cheshire Medical Center							
Materials Management -							
Ricoh SP5100 45 CPM	5,215	23,534	18,319	15,709	2,610	\$0.012000	None at this time.
S2109300078 / 12437479						\$219.83	
1,000,000 / 05/2007	0	0	0	0	0	\$0.00000	
Black Network Printer						\$0.00	
Connected							
IKON							
Medical Library							
Ricoh MPC300 32 CPM Black & Color	1,931	7,930	5,999	12,613	-6,614	\$0.003900	None at this time.
S7206000311 / 12437506						\$23.40	
750,000 / 01/2011	27	2,983	2,956	0	2,956	\$0.04995	
Color Photocopier						\$147.65	
Connected							
IKON							
Medical Records							
Ricoh MPC300 32 CPM Black & Color	7,951	69,853	61,902	33,065	28,837	\$0.003900	High Usage
S7206000222 / 12437499						\$241.42	
750,000 / 01/2011	8,039	14,095	6,056	0	6,056	\$0.04995	
Color Photocopier						\$302.50	
Connected							
IKON							

Cheshire Medical Center

Date of Last Upgrade: 4/1/2011

Make-Model / Speed Serial Number / Vendor ID Life / Intro Date Connectivity / Printer Exp Date Vendor	7/1/2011 Meter	6/30/2012 Meter	2011/12 Annual Volume	2012/13 Projected Volume	Volume Difference	Cost/Copy Annual Cost	Recommendations
Cheshire Medical Center							
Medical Records - Coding 1							
Ricoh MP5001 50 CPM	32,209	132,732	100,523	160,018	-59,495	\$0.003900	None at this time.
V8015001501 / 12437504						\$392.04	
1,000,000 / 11/2010	0	0	0	0	0	\$0.00000	
Black Photocopier						\$0.00	
Connected							
IKON							
Medical Records - Data							
Ricoh SP5100 45 CPM	3,183	17,404	14,221	73,308	-59,087	\$0.012000	None at this time.
S2109200432 / 12437566						\$170.65	
1,000,000 / 05/2007	0	0	0	0	0	\$0.00000	
Black Network Printer						\$0.00	
Connected							
IKON							
Medical Records - HIM							
Ricoh SP5100 45 CPM	7,373	53,125	45,752	22,534	23,218	\$0.012000	None at this time.
S2109300201 / 12437565						\$549.02	
1,000,000 / 05/2007	0	0	0	0	0	\$0.00000	
Black Network Printer						\$0.00	
Connected							
IKON							

Cheshire Medical Center

Date of Last Upgrade: 4/1/2011

Make-Model / Speed Serial Number / Vendor ID Life / Intro Date Connectivity / Printer Exp Date Vendor	7/1/2011 Meter	6/30/2012 Meter	2011/12 Annual Volume	2012/13 Projected Volume	Volume Difference	Cost/Copy Annual Cost	Recommendations
Cheshire Medical Center							
Medical Records - LOS							
Ricoh MPC300 32 CPM Black & Color	1,419	30,973	29,554	294,995	-265,441	\$0.003900	None at this time.
S7214900248 / 12437503						\$115.26	
750,000 / 01/2011	0	461	461	0	461	\$0.04995	
Color Photocopier						\$23.03	
Connected							
IKON							
Medical Records - Receptionist							
Ricoh SP3410DN 30 CPM	0	11,990	11,990	1,866	10,124	\$0.012000	None at this time.
S5809400086 / 12437716						\$143.88	
750,000 / 03/2010	0	0	0	0	0	\$0.00000	
Black Network Printer						\$0.00	
Connected							
IKON							

Cheshire Medical Center

Date of Last Upgrade: 4/1/2011

<i>Make-Model / Speed</i>	<i>Serial Number / Vendor ID</i>	<i>Life / Intro Date</i>	<i>Connectivity / Printer Exp Date</i>	<i>Vendor</i>	<i>7/1/2011 Meter</i>	<i>6/30/2012 Meter</i>	<i>2011/12 Annual Volume</i>	<i>2012/13 Projected Volume</i>	<i>Volume Difference</i>	<i>Cost/Copy Annual Cost</i>	<i>Recommendations</i>
Cheshire Medical Center											
Medical Records - ROI											
Ricoh MP201SPF 21 CPM	W3018501548 / 12437505	500,000 / 02/2011	Black Photocopier	Connected	0	39,434	39,434	0	39,434	\$0.003900	None at this time.
										\$153.79	
					0	0	0	0	0	\$0.00000	
										\$0.00	
IKON											
Ricoh SP5100 45 CPM	S2109200698 / 12437563	1,000,000 / 05/2007	Black Network Printer	Connected	39,914	200,520	160,606	225,720	-65,114	\$0.012000	None at this time.
										\$1,927.27	
					0	0	0	0	0	\$0.00000	
										\$0.00	
IKON											
Medical Records - ROI Hall											
Ricoh MPC300 32 CPM Black & Color	S7214900312 / 12437748	750,000 / 01/2011	Color Photocopier	Connected	1,928	14,212	12,284	0	12,284	\$0.003900	None at this time.
										\$47.91	
					830	1,806	976	0	976	\$0.04995	
										\$48.75	
IKON											

Cheshire Medical Center

Date of Last Upgrade: 4/1/2011

Make-Model / Speed Serial Number / Vendor ID Life / Intro Date Connectivity / Printer Exp Date Vendor	7/1/2011 Meter	6/30/2012 Meter	2011/12 Annual Volume	2012/13 Projected Volume	Volume Difference	Cost/Copy Annual Cost	Recommendations
Cheshire Medical Center							
Medical Records - ROI Manager							
Ricoh SP5100 45 CPM	3,839	51,220	47,381	15,500	31,881	\$0.012000	None at this time.
S2109300013 / 12437570						\$568.57	
1,000,000 / 05/2007	0	0	0	0	0	\$0.00000	
Black Network Printer						\$0.00	
Connected							
IKON							
Medical Records - ROI RR6							
Ricoh MP7001 70 CPM	81,337	585,348	504,011	394,268	109,743	\$0.003900	High Usage
V7015100157 / 12437497						\$1,965.64	
4,000,000 / 06/2009	0	0	0	0	0	\$0.00000	
Black Photocopier						\$0.00	
Connected							
IKON							
Medical Records - ROI RR7							
Ricoh MPC4501 45 CPM	18,294	91,858	73,564	75,915	-2,351	\$0.003900	None at this time.
V9515101023 / 12437498						\$286.90	
1,000,000 / 11/2010	57	153	96	0	96	\$0.04995	
Color Photocopier						\$4.80	
Connected							
IKON							

Cheshire Medical Center

Date of Last Upgrade: 4/1/2011

Make-Model / Speed Serial Number / Vendor ID Life / Intro Date Connectivity / Printer Exp Date Vendor	7/1/2011 Meter	6/30/2012 Meter	2011/12 Annual Volume	2012/13 Projected Volume	Volume Difference	Cost/Copy Annual Cost	Recommendations
Cheshire Medical Center							
Medical Records -							
Ricoh MP5001 50 CPM V8015100600 / 12437502 1,000,000 / 11/2010 Black Photocopier Connected IKON	5,824	126,077	120,253	64,054	56,199	\$0.003900 \$468.99 \$0.00000 \$0.00	None at this time.
Medication Asst Program							
Ricoh MPC300 32 CPM Black & Color S7206000314 / 12437525 750,000 / 01/2011 Color Photocopier Connected IKON	8,015	38,647	30,632	26,776	3,856	\$0.003900 \$119.46 \$0.04995 \$3.60	None at this time.

Cheshire Medical Center

Date of Last Upgrade: 4/1/2011

Make-Model / Speed Serial Number / Vendor ID Life / Intro Date Connectivity / Printer Exp Date Vendor	7/1/2011 Meter	6/30/2012 Meter	2011/12 Annual Volume	2012/13 Projected Volume	Volume Difference	Cost/Copy Annual Cost	Recommendations
Cheshire Medical Center							
MHU - Fax Room							
Ricoh MP5001 50 CPM	18,430	193,766	175,336	163,492	11,844	\$0.003900	None at this time.
V8015001159 / 12437630						\$683.81	
1,000,000 / 11/2010	0	0	0	0	0	\$0.00000	
Black Photocopier						\$0.00	
Connected							
IKON							
Ricoh SP5100 45 CPM	1,008	4,370	3,362	3,494	-132	\$0.012000	None at this time.
S2109300077 / 12437604						\$40.34	
1,000,000 / 05/2007	0	0	0	0	0	\$0.00000	
Black Network Printer						\$0.00	
Connected							
IKON							
MHU - Next to Data							
Ricoh SP5100 45 CPM	5,376	47,058	41,682	46,442	-4,760	\$0.012000	None at this time.
S2109300113 / 12437532						\$500.18	
1,000,000 / 05/2007	0	0	0	0	0	\$0.00000	
Black Network Printer						\$0.00	
Connected							
IKON							

Cheshire Medical Center

Date of Last Upgrade: 4/1/2011

Make-Model / Speed Serial Number / Vendor ID Life / Intro Date Connectivity / Printer Exp Date Vendor	7/1/2011 Meter	6/30/2012 Meter	2011/12 Annual Volume	2012/13 Projected Volume	Volume Difference	Cost/Copy Annual Cost	Recommendations
Cheshire Medical Center							
MRI - Control Room							
Ricoh MP201SPF 21 CPM	2,269	12,323	10,054	8,830	1,224	\$0.003900	None at this time.
W3018501550 / 12437648						\$39.21	
500,000 / 02/2011	0	0	0	0	0	\$0.00000	
Black Photocopier						\$0.00	
Connected							
IKON							
Need to Locate							
Ricoh SP5100 45 CPM	10,926	17,152	6,226	0	6,226	\$0.012000	None at this time.
S2109200539 / 12437731						\$74.71	
1,000,000 / 05/2007	0	0	0	0	0	\$0.00000	
Black Network Printer						\$0.00	
Connected							
IKON							
Ricoh SPC320DN 26 CPM	1	197	196	20,000	-19,804	\$0.012000	None at this time.
S9918500168 / 12437733						\$2.35	
500,000 / 02/2011	0	2	2	10,000	-9,998	\$0.08325	
Color Network Printer						\$0.17	
Connected							
IKON							

Cheshire Medical Center

Date of Last Upgrade: 4/1/2011

Make-Model / Speed Serial Number / Vendor ID Life / Intro Date Connectivity / Printer Exp Date Vendor	7/1/2011 Meter	6/30/2012 Meter	2011/12 Annual Volume	2012/13 Projected Volume	Volume Difference	Cost/Copy Annual Cost	Recommendations
Cheshire Medical Center							
Neurology - Outpatient - 5th							
Ricoh MPC300 32 CPM Black & Color	0	14,788	14,788	5,662	9,126	\$0.003900	None at this time.
S7206000322 / 12437627						\$57.67	
750,000 / 01/2011	0	1,151	1,151	0	1,151	\$0.04995	
Color Photocopier						\$57.49	
Connected							
IKON							
Neurology - Rheumatology							
Ricoh SP5100 45 CPM	4,760	21,375	16,615	30,375	-13,760	\$0.012000	None at this time.
S2109300037 / 12437607						\$199.38	
1,000,000 / 05/2007	0	0	0	0	0	\$0.00000	
Black Network Printer						\$0.00	
Connected							
IKON							
Ricoh SP5100 45 CPM	0	1,642	1,642	478	1,164	\$0.012000	None at this time.
S2109300227 / 12437608						\$19.70	
1,000,000 / 05/2007	0	0	0	0	0	\$0.00000	
Black Network Printer						\$0.00	
Connected							
IKON							

Cheshire Medical Center

Date of Last Upgrade: 4/1/2011

Make-Model / Speed Serial Number / Vendor ID Life / Intro Date Connectivity / Printer Exp Date Vendor	7/1/2011 Meter	6/30/2012 Meter	2011/12 Annual Volume	2012/13 Projected Volume	Volume Difference	Cost/Copy Annual Cost	Recommendations
Cheshire Medical Center							
Nurse's Clinic - Family Medicine							
Ricoh MP201SPF 21 CPM	0	25,000	25,000	0	25,000	\$0.003900	None at this time.
W3018501917 / 12437584						\$97.50	
500,000 / 02/2011	0	0	0	0	0	\$0.00000	
Black Photocopier						\$0.00	
Connected							
IKON							
Nurse's Clinic - Nurses' Station							
Ricoh SP5100 45 CPM	0	2,953	2,953	20,000	-17,047	\$0.012000	None at this time.
S2193000075 / 12437578						\$35.44	
1,000,000 / 05/2007	0	0	0	0	0	\$0.00000	
Black Network Printer						\$0.00	
Connected							
IKON							
Nurse's Clinic - Reception							
Ricoh MP201SPF 21 CPM	0	28,692	28,692	0	28,692	\$0.003900	None at this time.
W3018501546 / 12437577						\$111.90	
500,000 / 02/2011	0	0	0	0	0	\$0.00000	
Black Photocopier						\$0.00	
Connected							
IKON							

Cheshire Medical Center

Date of Last Upgrade: 4/1/2011

Make-Model / Speed Serial Number / Vendor ID Life / Intro Date Connectivity / Printer Exp Date Vendor	7/1/2011 Meter	6/30/2012 Meter	2011/12 Annual Volume	2012/13 Projected Volume	Volume Difference	Cost/Copy Annual Cost	Recommendations
Cheshire Medical Center							
Nutritional Services							
Ricoh SP5100 45 CPM	12,405	65,511	53,106	76,238	-23,132	\$0.012000	None at this time.
S2109200108 / 12437681						\$637.27	
1,000,000 / 05/2007	0	0	0	0	0	\$0.00000	
Black Network Printer						\$0.00	
Connected							
IKON							
OB/GYN							
Ricoh MP3351 33 CPM	2,030	33,278	31,248	43,762	-12,514	\$0.003900	None at this time.
V8314900797 / 12437663						\$121.87	
750,000 / 12/2009	0	0	0	0	0	\$0.00000	
Black Photocopier						\$0.00	
Connected							
IKON							
OB/GYN - Dr. Fisher							
Ricoh SPC320DN 26 CPM	0	907	907	362	545	\$0.012000	None at this time.
S9909501363 / 12481984						\$10.88	
500,000 / 02/2011	0	1,171	1,171	1,005	166	\$0.08325	
Color Network Printer						\$97.49	
Connected							
IKON							

Cheshire Medical Center

Date of Last Upgrade: 4/1/2011

Make-Model / Speed Serial Number / Vendor ID Life / Intro Date Connectivity / Printer Exp Date Vendor	7/1/2011 Meter	6/30/2012 Meter	2011/12 Annual Volume	2012/13 Projected Volume	Volume Difference	Cost/Copy Annual Cost	Recommendations
Cheshire Medical Center							
OB/GYN - Flow Room							
Ricoh MP201SPF 21 CPM W3018501521 / 12437661 500,000 / 02/2011 Black Photocopier Connected IKON	11,572	63,466	51,894	30,517	21,377	\$0.003900 \$202.39 \$0.00000 \$0.00	None at this time.
Ricoh SP5100 45 CPM S2109300255 / 12437660 1,000,000 / 05/2007 Black Network Printer Connected IKON	0	714	714	8,193	-7,479	\$0.012000 \$8.57 \$0.00000 \$0.00	None at this time.
OB/GYN - Obstetrics 2							
Ricoh SP5100 45 CPM S2109300074 / 12437659 1,000,000 / 05/2007 Black Network Printer Connected IKON	1,294	3,443	2,149	4,710	-2,561	\$0.012000 \$25.79 \$0.00000 \$0.00	None at this time.

Cheshire Medical Center

Date of Last Upgrade: 4/1/2011

Make-Model / Speed Serial Number / Vendor ID Life / Intro Date Connectivity / Printer Exp Date Vendor	7/1/2011 Meter	6/30/2012 Meter	2011/12 Annual Volume	2012/13 Projected Volume	Volume Difference	Cost/Copy Annual Cost	Recommendations
Cheshire Medical Center							
OB/GYN - Obstetrics 3							
Ricoh SP5100 45 CPM	3,623	16,777	13,154	14,171	-1,017	\$0.012000	None at this time.
S2109300199 / 12437658						\$157.85	
1,000,000 / 05/2007	0	0	0	0	0	\$0.00000	
Black Network Printer						\$0.00	
Connected							
IKON							
OB/Gyn - Women's Health							
Ricoh MPC300 32 CPM Black & Color	1	34,783	34,782	23,698	11,084	\$0.003900	None at this time.
S7214900247 / 12437707						\$135.65	
750,000 / 01/2011	1	7,121	7,120	0	7,120	\$0.04995	
Color Photocopier						\$355.64	
Connected							
IKON							
Occupational Health - Kimball							
Ricoh SP5100 45 CPM	2	518	516	497	19	\$0.012000	None at this time.
S2109200687 / 12437589						\$6.19	
1,000,000 / 05/2007	0	0	0	0	0	\$0.00000	
Black Network Printer						\$0.00	
Connected							
IKON							

Cheshire Medical Center

Date of Last Upgrade: 4/1/2011

Make-Model / Speed Serial Number / Vendor ID Life / Intro Date Connectivity / Printer Exp Date Vendor	7/1/2011 Meter	6/30/2012 Meter	2011/12 Annual Volume	2012/13 Projected Volume	Volume Difference	Cost/Copy Annual Cost	Recommendations
Cheshire Medical Center							
Occupational Health - North							
Ricoh SPC320DN 26 CPM	0	5,688	5,688	0	5,688	\$0.012000	None at this time.
S9918500115 / 12437732						\$68.26	
500,000 / 02/2011	0	504	504	0	504	\$0.08325	
Color Network Printer						\$41.96	
Connected							
IKON							
Occupational Health - Reception							
Ricoh MPC300 32 CPM Black & Color	0	34,850	34,850	0	34,850	\$0.003900	None at this time.
S7206000316 / 12437572						\$135.92	
750,000 / 01/2011	0	17	17	0	17	\$0.04995	
Color Photocopier						\$0.85	
Connected							
IKON							
Ricoh SP5100 45 CPM	8,548	36,134	27,586	30,670	-3,084	\$0.012000	None at this time.
S2109300010 / 12437571						\$331.03	
1,000,000 / 05/2007	0	0	0	0	0	\$0.00000	
Black Network Printer						\$0.00	
Connected							
IKON							

Cheshire Medical Center

Date of Last Upgrade: 4/1/2011

Make-Model / Speed Serial Number / Vendor ID Life / Intro Date Connectivity / Printer Exp Date Vendor	7/1/2011 Meter	6/30/2012 Meter	2011/12 Annual Volume	2012/13 Projected Volume	Volume Difference	Cost/Copy Annual Cost	Recommendations
Cheshire Medical Center							
Oncology - 1st Floor							
Ricoh MP3351 33 CPM V8314900837 / 12433685 750,000 / 12/2009 Black Photocopier Connected IKON	0	24,212	24,212	32,241	-8,029	\$0.003900 \$94.43 \$0.00000 \$0.00	None at this time.
Oncology - Cancer							
Ricoh MPC300 32 CPM Black & Color S7206000317 / 12437421 750,000 / 01/2011 Color Photocopier Connected IKON	5,516	31,264	25,748	21,786	3,962	\$0.003900 \$100.42 \$0.04995 \$187.76	None at this time.
Oncology - Dosintry							
Xerox CQ8570DN 40 CPM XFN035824 / 750,000 / 10/2010 Color Network Printer Connected 4/27/2016 VARY	0	5,214	5,214	20,000	-14,786	\$0.014900 \$77.69 \$0.08900 \$954.35	None at this time.

Cheshire Medical Center

Date of Last Upgrade: 4/1/2011

Make-Model / Speed Serial Number / Vendor ID Life / Intro Date Connectivity / Printer Exp Date Vendor	7/1/2011 Meter	6/30/2012 Meter	2011/12 Annual Volume	2012/13 Projected Volume	Volume Difference	Cost/Copy Annual Cost	Recommendations
Cheshire Medical Center							
Oncology - Infusion 1st Floor							
Ricoh SP5100 45 CPM S2109300312 / 12437686 1,000,000 / 05/2007 Black Network Printer Connected IKON	2	21,981	21,979	18,709	3,270	\$0.012000 \$263.75 \$0.00000 \$0.00	None at this time.
Ricoh SP5100 45 CPM S2109300139 / 12437687 1,000,000 / 05/2007 Black Network Printer Connected IKON	0	1,505	1,505	1,299	206	\$0.012000 \$18.06 \$0.00000 \$0.00	None at this time.
Ricoh SP5100 45 CPM S2109300168 / 12437688 1,000,000 / 05/2007 Black Network Printer Connected IKON	17,360	72,296	54,936	62,682	-7,746	\$0.012000 \$659.23 \$0.00000 \$0.00	None at this time.

Cheshire Medical Center

Date of Last Upgrade: 4/1/2011

Make-Model / Speed Serial Number / Vendor ID Life / Intro Date Connectivity / Printer Exp Date Vendor	7/1/2011 Meter	6/30/2012 Meter	2011/12 Annual Volume	2012/13 Projected Volume	Volume Difference	Cost/Copy Annual Cost	Recommendations
Cheshire Medical Center							
Oncology - Library							
Ricoh SPC320DN 26 CPM	0	138	138	20,000	-19,862	\$0.012000	None at this time.
S9918500155 / 12437714						\$1.66	
500,000 / 02/2011	0	118	118	10,000	-9,882	\$0.08325	
Color Network Printer						\$9.82	
Connected							
IKON							
Oncology - Phone Room							
Ricoh MP201SPF 21 CPM	0	20,664	20,664	0	20,664	\$0.003900	None at this time.
W3018501908 / 12437486						\$80.59	
500,000 / 02/2011	0	0	0	0	0	\$0.00000	
Black Photocopier						\$0.00	
Connected							
IKON							
Oncology - Radiation - Holding							
Ricoh SP5100 45 CPM	0	3,216	3,216	20,000	-16,784	\$0.012000	None at this time.
S2109300231 / 12437683						\$38.59	
1,000,000 / 05/2007	0	0	0	0	0	\$0.00000	
Black Network Printer						\$0.00	
Connected							
IKON							

Cheshire Medical Center

Date of Last Upgrade: 4/1/2011

Make-Model / Speed Serial Number / Vendor ID Life / Intro Date Connectivity / Printer Exp Date Vendor	7/1/2011 Meter	6/30/2012 Meter	2011/12 Annual Volume	2012/13 Projected Volume	Volume Difference	Cost/Copy Annual Cost	Recommendations
Cheshire Medical Center							
Oncology - Radiation Records							
Ricoh MP3351 33 CPM V8314900550 / 12437424 750,000 / 12/2009 Black Photocopier Connected IKON	0	14,877	14,877	30,565	-15,688	\$0.003900 \$58.02 \$0.00000 \$0.00	None at this time.
Ricoh MPC300 32 CPM Black & Color S7206000321 / 12437423 750,000 / 01/2011 Color Photocopier Connected IKON	17,562	77,652	60,090	46,955	13,135	\$0.003900 \$234.35 \$0.04995 \$109.84	None at this time.
Oncology - Reception							
Ricoh MP201SPF 21 CPM W3019102663 / 12437684 500,000 / 02/2011 Black Photocopier Connected IKON	0	26,268	26,268	26,645	-377	\$0.003900 \$102.45 \$0.00000 \$0.00	None at this time.

Cheshire Medical Center

Date of Last Upgrade: 4/1/2011

Make-Model / Speed Serial Number / Vendor ID Life / Intro Date Connectivity / Printer Exp Date Vendor	7/1/2011 Meter	6/30/2012 Meter	2011/12 Annual Volume	2012/13 Projected Volume	Volume Difference	Cost/Copy Annual Cost	Recommendations
Cheshire Medical Center							
OR - Materials Mgmt - Sue Cox							
Ricoh MP201SPF 21 CPM	0	2,880	2,880	0	2,880	\$0.003900	None at this time.
W3019101562 / 12437722						\$11.23	
500,000 / 02/2011	0	0	0	0	0	\$0.00000	
Black Photocopier						\$0.00	
Connected							
IKON							
Orthopedics - 2							
Ricoh SP5100 45 CPM	2	1,222	1,220	1,045	175	\$0.012000	None at this time.
S2199300015 / 12437705						\$14.64	
1,000,000 / 05/2007	0	0	0	0	0	\$0.00000	
Black Network Printer						\$0.00	
Connected							
IKON							
Orthopedics - 3							
Ricoh SP5100 45 CPM	2	429	427	564	-137	\$0.012000	None at this time.
S2109300024 / 12437587						\$5.12	
1,000,000 / 05/2007	0	0	0	0	0	\$0.00000	
Black Network Printer						\$0.00	
Connected							
IKON							

Cheshire Medical Center

Date of Last Upgrade: 4/1/2011

Make-Model / Speed Serial Number / Vendor ID Life / Intro Date Connectivity / Printer Exp Date Vendor	7/1/2011 Meter	6/30/2012 Meter	2011/12 Annual Volume	2012/13 Projected Volume	Volume Difference	Cost/Copy Annual Cost	Recommendations
Cheshire Medical Center							
Orthopedics - 4							
Ricoh MPC3001 30 CPM V9315000182 / 12437507 750,000 / 11/2010 Color Photocopier Connected IKON	9,684	42,225	32,541	36,667	-4,126	\$0.003900 \$126.91	None at this time.
	1,731	9,342	7,611	0	7,611	\$0.04995 \$380.17	
Ricoh SP5100 45 CPM S2109200195 / 12437573 1,000,000 / 05/2007 Black Network Printer Connected IKON	5,862	24,554	18,692	14,957	3,735	\$0.012000 \$224.30	None at this time.
	0	0	0	0	0	\$0.00000 \$0.00	
Orthopedics - 5							
Ricoh SP5100 45 CPM S2109300282 / 12437706 1,000,000 / 05/2007 Black Network Printer Connected IKON	2	25,638	25,636	27,518	-1,882	\$0.012000 \$307.63	None at this time.
	0	0	0	0	0	\$0.00000 \$0.00	

Cheshire Medical Center

Date of Last Upgrade: 4/1/2011

Make-Model / Speed Serial Number / Vendor ID Life / Intro Date Connectivity / Printer Exp Date Vendor	7/1/2011 Meter	6/30/2012 Meter	2011/12 Annual Volume	2012/13 Projected Volume	Volume Difference	Cost/Copy Annual Cost	Recommendations
Cheshire Medical Center							
Orthopedics - 6							
Ricoh SP5100 45 CPM	2	983	981	816	165	\$0.012000	None at this time.
S2109300310 / 12437704						\$11.77	
1,000,000 / 05/2007	0	0	0	0	0	\$0.00000	
Black Network Printer						\$0.00	
Connected							
IKON							
Orthopedics - 6 - Lower Level							
Ricoh MP201SPF 21 CPM	0	23,972	23,972	33,276	-9,304	\$0.003900	None at this time.
W3019102716 / 12437513						\$93.49	
500,000 / 02/2011	0	0	0	0	0	\$0.00000	
Black Photocopier						\$0.00	
Connected							
IKON							
Orthopedics - Reception/X-Ray							
Ricoh MP201SPF 21 CPM	0	23,087	23,087	0	23,087	\$0.003900	None at this time.
W3018501916 / 12437512						\$90.04	
500,000 / 02/2011	0	0	0	0	0	\$0.00000	
Black Photocopier						\$0.00	
Connected							
IKON							

Cheshire Medical Center

Date of Last Upgrade: 4/1/2011

Make-Model / Speed Serial Number / Vendor ID Life / Intro Date Connectivity / Printer Exp Date Vendor	7/1/2011 Meter	6/30/2012 Meter	2011/12 Annual Volume	2012/13 Projected Volume	Volume Difference	Cost/Copy Annual Cost	Recommendations
Cheshire Medical Center							
PACU - Phase							
Ricoh MPC300 32 CPM Black & Color	4,180	15,492	11,312	16,446	-5,134	\$0.003900	None at this time.
S7215100410 / 12437528						\$44.12	
750,000 / 01/2011	1	35	34	0	34	\$0.04995	
Color Photocopier						\$1.70	
Connected							
IKON							
PACU - Phase Nurses' Station							
Ricoh MP201SPF 21 CPM	3,706	21,503	17,797	6,616	11,181	\$0.003900	None at this time.
W3018500998 / 12437529						\$69.41	
500,000 / 02/2011	0	0	0	0	0	\$0.00000	
Black Photocopier						\$0.00	
Connected							
IKON							
PACU - Supervisor's Office							
Ricoh MP201SPF 21 CPM	0	3,487	3,487	3,473	14	\$0.003900	None at this time.
W3018500971 / 12437530						\$13.60	
500,000 / 02/2011	0	0	0	0	0	\$0.00000	
Black Photocopier						\$0.00	
Connected							
IKON							

Cheshire Medical Center

Date of Last Upgrade: 4/1/2011

<i>Make-Model / Speed</i>							
<i>Serial Number / Vendor ID</i>							
<i>Life / Intro Date</i>							
<i>Connectivity / Printer Exp Date</i>							
<i>Vendor</i>	<i>7/1/2011 Meter</i>	<i>6/30/2012 Meter</i>	<i>2011/12 Annual Volume</i>	<i>2012/13 Projected Volume</i>	<i>Volume Difference</i>	<i>Cost/Copy Annual Cost</i>	<i>Recommendations</i>
Cheshire Medical Center							
<i>Pain Clinic</i>							
Ricoh MPC300 32 CPM Black & Color	4,105	44,809	40,704	10,385	30,319	\$0.003900	None at this time.
S7214900179 / 12437710						\$158.75	
750,000 / 01/2011	64	780	716	0	716	\$0.04995	
Color Photocopier						\$35.76	
Connected							
IKON							
<i>Pain Clinic - Labels</i>							
Ricoh SP5100 45 CPM	0	1,363	1,363	1,247	116	\$0.012000	None at this time.
S2109200505 / 12437709						\$16.36	
1,000,000 / 05/2007	0	0	0	0	0	\$0.00000	
Black Network Printer						\$0.00	
Connected							
IKON							
<i>Pastoral Services</i>							
Ricoh MP201SPF 21 CPM	1,658	10,399	8,741	4,521	4,220	\$0.003900	None at this time.
W3018500945 / 12437408						\$34.09	
500,000 / 02/2011	0	0	0	0	0	\$0.00000	
Black Photocopier						\$0.00	
Connected							
IKON							

Cheshire Medical Center

Date of Last Upgrade: 4/1/2011

Make-Model / Speed Serial Number / Vendor ID Life / Intro Date Connectivity / Printer Exp Date Vendor	7/1/2011 Meter	6/30/2012 Meter	2011/12 Annual Volume	2012/13 Projected Volume	Volume Difference	Cost/Copy Annual Cost	Recommendations
Cheshire Medical Center							
Patient Accounts							
Ricoh MP6001 60 CPM	0	96,082	96,082	195,608	-99,526	\$0.003900	Under Used
V6915100326 / 12437441						\$374.72	
3,000,000 / 06/2009	0	0	0	0	0	\$0.00000	
Black Photocopier						\$0.00	
Connected							
IKON							
Patient Accounts - Commercial							
Ricoh MP5001 50 CPM	13,317	158,388	145,071	50,356	94,715	\$0.003900	High Usage
V8015100700 / 12437442						\$565.78	
1,000,000 / 11/2010	0	0	0	0	0	\$0.00000	
Black Photocopier						\$0.00	
Connected							
IKON							
Patient Accounts - Credit							
Ricoh SP5100 45 CPM	2	38,672	38,670	19,599	19,071	\$0.012000	None at this time.
S2109300051 / 12437472						\$464.04	
1,000,000 / 05/2007	0	0	0	0	0	\$0.00000	
Black Network Printer						\$0.00	
Connected							
IKON							

Cheshire Medical Center

Date of Last Upgrade: 4/1/2011

Make-Model / Speed Serial Number / Vendor ID Life / Intro Date Connectivity / Printer Exp Date Vendor	7/1/2011 Meter	6/30/2012 Meter	2011/12 Annual Volume	2012/13 Projected Volume	Volume Difference	Cost/Copy Annual Cost	Recommendations
Cheshire Medical Center							
Patient Accounts - Federal							
Ricoh MPC300 32 CPM Black & Color S7214900249 / 12437443 750,000 / 01/2011 Color Photocopier Connected IKON	10,764	86,906	76,142	29,884	46,258	\$0.003900 \$296.95 \$0.04995 \$652.95	None at this time.
Patient Accounts - SBO							
Ricoh SP5100 45 CPM S2109300283 / 12437703 1,000,000 / 05/2007 Black Network Printer Connected IKON	7,678	33,422	25,744	114,065	-88,321	\$0.012000 \$308.93 \$0.00000 \$0.00	Under Used
Patient Financial Services							
Ricoh MPC300 32 CPM Black & Color S7214900289 / 12437517 750,000 / 01/2011 Color Photocopier Connected IKON	14,811	85,381	70,570	34,698	35,872	\$0.003900 \$275.22 \$0.04995 \$92.61	None at this time.

Cheshire Medical Center

Date of Last Upgrade: 4/1/2011

Make-Model / Speed Serial Number / Vendor ID Life / Intro Date Connectivity / Printer Exp Date Vendor	7/1/2011 Meter	6/30/2012 Meter	2011/12 Annual Volume	2012/13 Projected Volume	Volume Difference	Cost/Copy Annual Cost	Recommendations
Cheshire Medical Center							
Pediatrics - Campbell							
Ricoh SP5100 45 CPM	1,245	5,727	4,482	4,161	321	\$0.012000	None at this time.
S2109300131 / 12437613						\$53.78	
1,000,000 / 05/2007	0	0	0	0	0	\$0.00000	
Black Network Printer						\$0.00	
Connected							
IKON							
Pediatrics - Goodman							
Ricoh SP5100 45 CPM	1,268	6,135	4,867	2,075	2,792	\$0.012000	None at this time.
S2109300221 / 12437614						\$58.40	
1,000,000 / 05/2007	0	0	0	0	0	\$0.00000	
Black Network Printer						\$0.00	
Connected							
IKON							
Pediatrics - Hansen							
Ricoh SP5100 45 CPM	1,245	11,125	9,880	16,661	-6,781	\$0.012000	None at this time.
S2109300159 / 12437610						\$118.56	
1,000,000 / 05/2007	0	0	0	0	0	\$0.00000	
Black Network Printer						\$0.00	
Connected							
IKON							

Cheshire Medical Center

Date of Last Upgrade: 4/1/2011

Make-Model / Speed Serial Number / Vendor ID Life / Intro Date Connectivity / Printer Exp Date Vendor	7/1/2011 Meter	6/30/2012 Meter	2011/12 Annual Volume	2012/13 Projected Volume	Volume Difference	Cost/Copy Annual Cost	Recommendations
Cheshire Medical Center							
Pediatrics - Phone Room							
Ricoh SP5100 45 CPM	2,623	13,270	10,647	11,075	-428	\$0.012000	None at this time.
S2109300064 / 12437611						\$127.76	
1,000,000 / 05/2007	0	0	0	0	0	\$0.00000	
Black Network Printer						\$0.00	
Connected							
IKON							
Pediatrics - Reception							
Ricoh MPC300 32 CPM Black & Color	23,611	106,772	83,161	47,280	35,881	\$0.003900	None at this time.
S7215100411 / 12437612						\$324.33	
750,000 / 01/2011	630	8,509	7,879	0	7,879	\$0.04995	
Color Photocopier						\$393.56	
Connected							
IKON							
Pharmacy							
Ricoh MPC300 32 CPM Black & Color	10,343	52,585	42,242	49,527	-7,285	\$0.003900	None at this time.
S7215000115 / 12437439						\$164.74	
750,000 / 01/2011	40	85	45	0	45	\$0.04995	
Color Photocopier						\$2.25	
Connected							
IKON							

Cheshire Medical Center

Date of Last Upgrade: 4/1/2011

Make-Model / Speed Serial Number / Vendor ID Life / Intro Date Connectivity / Printer Exp Date Vendor	7/1/2011 Meter	6/30/2012 Meter	2011/12 Annual Volume	2012/13 Projected Volume	Volume Difference	Cost/Copy Annual Cost	Recommendations
Cheshire Medical Center							
Pharmacy - Bridge							
Ricoh SP5100 45 CPM	8,372	41,688	33,316	3,736	29,580	\$0.012000	None at this time.
S2109300160 / 12437692						\$399.79	
1,000,000 / 05/2007	0	0	0	0	0	\$0.00000	
Black Network Printer						\$0.00	
Connected							
IKON							
Pharmacy - Office							
Ricoh SP5100 45 CPM	4,116	16,550	12,434	53,776	-41,342	\$0.012000	Under used
S2109300269 / 12437691						\$149.21	
1,000,000 / 05/2007	0	0	0	0	0	\$0.00000	
Black Network Printer						\$0.00	
Connected							
IKON							
Power Plant							
Ricoh MPC300 32 CPM Black & Color	0	16,502	16,502	20,000	-3,498	\$0.003900	None at this time.
S7214900319 / 12437713						\$64.36	
750,000 / 01/2011	0	4,633	4,633	0	4,633	\$0.04995	
Color Photocopier						\$231.42	
Connected							
IKON							

Cheshire Medical Center

Date of Last Upgrade: 4/1/2011

Make-Model / Speed Serial Number / Vendor ID Life / Intro Date Connectivity / Printer Exp Date Vendor	7/1/2011 Meter	6/30/2012 Meter	2011/12 Annual Volume	2012/13 Projected Volume	Volume Difference	Cost/Copy Annual Cost	Recommendations
Cheshire Medical Center							
Pre-Certification							
Ricoh SP5100 45 CPM	4,191	30,253	26,062	25,430	632	\$0.012000	None at this time.
S2109300267 / 12437726						\$312.74	
1,000,000 / 05/2007	0	0	0	0	0	\$0.00000	
Black Network Printer						\$0.00	
Connected							
IKON							
Pre-Certification Room c1111b							
Ricoh MP201SPF 21 CPM	0	37,456	37,456	0	37,456	\$0.003900	None at this time.
W3018501859 / 12437406						\$146.08	
500,000 / 02/2011	0	0	0	0	0	\$0.00000	
Black Photocopier						\$0.00	
Connected							
IKON							
Pre-Testing							
Ricoh MPC300 32 CPM Black & Color	0	11,347	11,347	0	11,347	\$0.003900	None at this time.
S7215100153 / 12437653						\$44.25	
750,000 / 01/2011	0	3	3	0	3	\$0.04995	
Color Photocopier						\$0.15	
Connected							
IKON							

Cheshire Medical Center

Date of Last Upgrade: 4/1/2011

<i>Make-Model / Speed</i>	<i>Serial Number / Vendor ID</i>	<i>Life / Intro Date</i>	<i>Connectivity / Printer Exp Date</i>	<i>Vendor</i>	<i>7/1/2011 Meter</i>	<i>6/30/2012 Meter</i>	<i>2011/12 Annual Volume</i>	<i>2012/13 Projected Volume</i>	<i>Volume Difference</i>	<i>Cost/Copy Annual Cost</i>	<i>Recommendations</i>
Cheshire Medical Center											
Print Shop											
Konica Minolta BHC6501 65 CPM Black & A0U0011001934 / 5,000,000 / 10/2008					19,893	39,420	19,527	21,207	-1,680	\$0.003900 \$76.16	High Color Usage
Color Photocopier					519,952	1,021,354	501,402	389,085	112,317	\$0.04500 \$22,563.09	
Connected											
KMBS											
Konica Minolta c500 50 CPM Black & Color 65LE00633 / 1,000,000 / 02/2005					315,702	333,411	17,709	13,211	4,498	\$0.004200 \$74.38	7 years from Intro.
Color Photocopier					2,376,406	2,654,865	278,459	198,996	79,463	\$0.04500 \$12,530.66	
Connected											
KMBS											
Ricoh MPC300 32 CPM Black & Color S7214900274 / 12437522					164	1,306	1,142	2,583	-1,441	\$0.003900 \$4.45	None at this time.
Color Photocopier					713	4,750	4,037	10,868	-6,831	\$0.04995 \$201.65	
Connected											
IKON											

Cheshire Medical Center

Date of Last Upgrade: 4/1/2011

Make-Model / Speed Serial Number / Vendor ID Life / Intro Date Connectivity / Printer Exp Date Vendor	7/1/2011 Meter	6/30/2012 Meter	2011/12 Annual Volume	2012/13 Projected Volume	Volume Difference	Cost/Copy Annual Cost	Recommendations
Cheshire Medical Center							
Ricoh Pro907EX 90 CPM V5010200129 / 12437520 5,000,000 / 07/2009 Black Photocopier Connected IKON	0	1,081,567	1,081,567	1,081,782	-215	\$0.003900 \$4,218.11 \$0.00000 \$0.00	None at this time.
Ricoh Pro907EX 90 CPM V5010200027 / 12437521 5,000,000 / 07/2009 Black Photocopier Connected IKON	0	1,090,622	1,090,622	1,119,079	-28,457	\$0.003900 \$4,253.43 \$0.00000 \$0.00	None at this time.
Ricoh Pro907EX 90 CPM V5010200024 / 12437523 5,000,000 / 07/2009 Black Photocopier Connected IKON	0	985,821	985,821	978,786	7,035	\$0.003900 \$3,844.70 \$0.00000 \$0.00	None at this time.
Risograph RZ310 120 CPM 81830878 / C5385 7,000,000 / 10/2004 High-Speed Duplicator Not Connected UBM	327,131	367,460	40,329	74,405	-34,076	\$0.005080 \$204.87 \$0.00000 \$0.00	8 years from Intro.

Cheshire Medical Center

Date of Last Upgrade: 4/1/2011

Make-Model / Speed Serial Number / Vendor ID Life / Intro Date Connectivity / Printer Exp Date Vendor	7/1/2011 Meter	6/30/2012 Meter	2011/12 Annual Volume	2012/13 Projected Volume	Volume Difference	Cost/Copy Annual Cost	Recommendations
Cheshire Medical Center							
Pulmonary							
Ricoh MP201SPF 21 CPM W3028700149 / 12647309 500,000 / 02/2011 Black Photocopier Not Connected IKON	0	1,552	1,552	0	1,552	\$0.003900 \$6.05 \$0.00000 \$0.00	None at this time.
Pulmonary - Cardiology - 4th							
Ricoh MP3351 33 CPM V8315000183 / 12437398 750,000 / 12/2009 Black Photocopier Connected IKON	0	58,554	58,554	6,644	51,910	\$0.003900 \$228.36 \$0.00000 \$0.00	None at this time.
Ricoh SP5100 45 CPM S2109300251 / 12437606 1,000,000 / 05/2007 Black Network Printer Connected IKON	6,830	39,801	32,971	12,053	20,918	\$0.012000 \$395.65 \$0.00000 \$0.00	None at this time.
QI - Med Staff Office							
Ricoh MPC4501 45 CPM V9515100993 / 12437410 1,000,000 / 11/2010 Color Photocopier Connected IKON	4,016	49,910	45,894	63,298	-17,404	\$0.003900 \$178.99 \$0.04995 \$275.27	None at this time.

Cheshire Medical Center

Date of Last Upgrade: 4/1/2011

Make-Model / Speed Serial Number / Vendor ID Life / Intro Date Connectivity / Printer Exp Date Vendor	7/1/2011 Meter	6/30/2012 Meter	2011/12 Annual Volume	2012/13 Projected Volume	Volume Difference	Cost/Copy Annual Cost	Recommendations
Cheshire Medical Center							
QI Med - Case Manager's Office							
Ricoh MPC300 32 CPM Black & Color	0	16,311	16,311	8,088	8,223	\$0.003900	None at this time.
S7214900302 / 12437632						\$63.61	
750,000 / 01/2011	0	7	7	0	7	\$0.04995	
Color Photocopier						\$0.35	
Connected							
IKON							
Radiology							
Ricoh MP3351 33 CPM	0	33,422	33,422	40,160	-6,738	\$0.003900	None at this time.
V8315000196 / 12437515						\$130.35	
750,000 / 12/2009	0	0	0	0	0	\$0.00000	
Black Photocopier						\$0.00	
Connected							
IKON							
Ricoh MPC300 32 CPM Black & Color	6,082	23,869	17,787	31,374	-13,587	\$0.003900	None at this time.
S7214900166 / 12437650						\$69.37	
750,000 / 01/2011	2	74	72	0	72	\$0.04995	
Color Photocopier						\$3.60	
Connected							
IKON							

Cheshire Medical Center

Date of Last Upgrade: 4/1/2011

<i>Make-Model / Speed</i>							
<i>Serial Number / Vendor ID</i>							
<i>Life / Intro Date</i>							
<i>Connectivity / Printer Exp Date</i>							
<i>Vendor</i>	<i>7/1/2011 Meter</i>	<i>6/30/2012 Meter</i>	<i>2011/12 Annual Volume</i>	<i>2012/13 Projected Volume</i>	<i>Volume Difference</i>	<i>Cost/Copy Annual Cost</i>	<i>Recommendations</i>
Cheshire Medical Center							
<i>Radiology - Abe Howe</i>							
Ricoh SPC320DN 26 CPM	0	3,061	3,061	7,456	-4,395	\$0.012000	None at this time.
S9918500131 / 12437649						\$36.73	
500,000 / 02/2011	0	28	28	0	28	\$0.08325	
Color Network Printer						\$2.33	
Connected							
IKON							
<i>Radiology - Administration</i>							
Ricoh MPC300 32 CPM Black & Color	4,183	15,973	11,790	0	11,790	\$0.003900	None at this time.
S7215100050 / 12437516						\$45.98	
750,000 / 01/2011	1,368	6,294	4,926	0	4,926	\$0.04995	
Color Photocopier						\$246.05	
Connected							
IKON							
<i>Radiology - Brenda Glinka</i>							
Ricoh SPC320DN 26 CPM	0	5,137	5,137	20,000	-14,863	\$0.012000	None at this time.
S9918500171 / 12437640						\$61.64	
500,000 / 02/2011	0	454	454	0	454	\$0.08325	
Color Network Printer						\$37.80	
Connected							
IKON							

Cheshire Medical Center

Date of Last Upgrade: 4/1/2011

Make-Model / Speed Serial Number / Vendor ID Life / Intro Date Connectivity / Printer Exp Date Vendor	7/1/2011 Meter	6/30/2012 Meter	2011/12 Annual Volume	2012/13 Projected Volume	Volume Difference	Cost/Copy Annual Cost	Recommendations
Cheshire Medical Center							
Radiology - Chief Technician							
Ricoh SP5100 45 CPM	459	1,843	1,384	5,095	-3,711	\$0.012000	None at this time.
S2109300299 / 12437641						\$16.61	
1,000,000 / 05/2007	0	0	0	0	0	\$0.00000	
Black Network Printer						\$0.00	
Connected							
IKON							
Radiology - CT							
Ricoh SP5100 45 CPM	5,928	43,080	37,152	21,837	15,315	\$0.012000	None at this time.
S2109300151 / 12437639						\$445.82	
1,000,000 / 05/2007	0	0	0	0	0	\$0.00000	
Black Network Printer						\$0.00	
Connected							
IKON							
Radiology - Film Lab							
Ricoh SP5100 45 CPM	7,217	86,935	79,718	20,000	59,718	\$0.012000	High Usage
S2109300223 / 12437651						\$956.62	
1,000,000 / 05/2007	0	0	0	0	0	\$0.00000	
Black Network Printer						\$0.00	
Connected							
IKON							

Cheshire Medical Center

Date of Last Upgrade: 4/1/2011

<i>Make-Model / Speed</i>	<i>Serial Number / Vendor ID</i>	<i>Life / Intro Date</i>	<i>Connectivity / Printer Exp Date</i>	<i>Vendor</i>	<i>7/1/2011 Meter</i>	<i>6/30/2012 Meter</i>	<i>2011/12 Annual Volume</i>	<i>2012/13 Projected Volume</i>	<i>Volume Difference</i>	<i>Cost/Copy Annual Cost</i>	<i>Recommendations</i>
Cheshire Medical Center											
Radiology - North											
Ricoh MPC300 32 CPM Black & Color	S7214900316 / 12437588	750,000 / 01/2011	Color Photocopier	Connected	2,073	29,152	27,079	29,949	-2,870	\$0.003900	None at this time.
										\$105.61	
					30	918	888	0	888	\$0.04995	
										\$44.36	
Radiology - Pre-Admin Testing											
Ricoh SP5100 45 CPM	S2109200529 / 12437647	1,000,000 / 05/2007	Black Network Printer	Connected	7,832	41,255	33,423	25,572	7,851	\$0.012000	None at this time.
										\$401.08	
					0	0	0	0	0	\$0.00000	
										\$0.00	
Radiology - PT											
Ricoh SP5100 45 CPM	S2109200136 /	1,000,000 / 05/2007	Black Network Printer	Connected	0	700	700	325	375	\$0.012000	None at this time.
										\$8.40	
					0	0	0	0	0	\$0.00000	
										\$0.00	

Cheshire Medical Center

Date of Last Upgrade: 4/1/2011

Make-Model / Speed Serial Number / Vendor ID Life / Intro Date Connectivity / Printer Exp Date Vendor	7/1/2011 Meter	6/30/2012 Meter	2011/12 Annual Volume	2012/13 Projected Volume	Volume Difference	Cost/Copy Annual Cost	Recommendations
Cheshire Medical Center							
Radiology - SPECT							
Xerox CQ8570DN 40 CPM	0	2,367	2,367	20,000	-17,633	\$0.014900	None at this time.
XFN040067 /						\$35.27	
750,000 / 10/2010	0	943	943	10,000	-9,057	\$0.08900	
Color Network Printer						\$83.93	
Connected 5/23/2016							
VARY							
Registration - West							
Ricoh MP201SPF 21 CPM	11,640	65,782	54,142	48,015	6,127	\$0.003900	None at this time.
W3009600771 / 12437409						\$211.15	
500,000 / 02/2011	0	0	0	0	0	\$0.00000	
Black Photocopier						\$0.00	
Connected							
IKON							
Respiratory Therapy							
Ricoh SP5100 45 CPM	3,333	13,050	9,717	12,285	-2,568	\$0.012000	None at this time.
S2109300032 / 12437474						\$116.60	
1,000,000 / 05/2007	0	0	0	0	0	\$0.00000	
Black Network Printer						\$0.00	
Connected							
IKON							

Cheshire Medical Center

Date of Last Upgrade: 4/1/2011

<i>Make-Model / Speed</i>							
<i>Serial Number / Vendor ID</i>							
<i>Life / Intro Date</i>							
<i>Connectivity / Printer Exp Date</i>							
<i>Vendor</i>	<i>7/1/2011 Meter</i>	<i>6/30/2012 Meter</i>	<i>2011/12 Annual Volume</i>	<i>2012/13 Projected Volume</i>	<i>Volume Difference</i>	<i>Cost/Copy Annual Cost</i>	<i>Recommendations</i>
Cheshire Medical Center							
Respiratory Therapy Room							
Ricoh MPC300 32 CPM Black & Color	0	2,583	2,583	4,998	-2,415	\$0.003900	None at this time.
S7214900314 / 12437475						\$10.07	
750,000 / 01/2011	0	161	161	0	161	\$0.04995	
Color Photocopier						\$8.04	
Connected							
IKON							
Security Office							
Ricoh SPC232DN 21 CPM	0	3,198	3,198	0	3,198	\$0.012000	None at this time.
S5409401391 / 12481977						\$38.38	
500,000 / 05/2009	0	2,191	2,191	0	2,191	\$0.08325	
Color Network Printer						\$182.40	
Connected							
IKON							

Cheshire Medical Center

Date of Last Upgrade: 4/1/2011

Make-Model / Speed Serial Number / Vendor ID Life / Intro Date Connectivity / Printer Exp Date Vendor	7/1/2011 Meter	6/30/2012 Meter	2011/12 Annual Volume	2012/13 Projected Volume	Volume Difference	Cost/Copy Annual Cost	Recommendations
Cheshire Medical Center							
Short Stay - Nurses' Station							
Ricoh SP5100 45 CPM	7,166	54,743	47,577	47,075	502	\$0.012000	None at this time.
S2109300009 / 12437645						\$570.92	
1,000,000 / 05/2007	0	0	0	0	0	\$0.00000	
Black Network Printer						\$0.00	
Connected							
IKON							
Ricoh SP5100 45 CPM	3,749	13,330	9,581	15,802	-6,221	\$0.012000	None at this time.
S2109300138 / 12437644						\$114.97	
1,000,000 / 05/2007	0	0	0	0	0	\$0.00000	
Black Network Printer						\$0.00	
Connected							
IKON							
Social Work - Lois Kitz's Office							
Ricoh MP201SPF 21 CPM	0	1,421	1,421	0	1,421	\$0.003900	None at this time.
W3019100526 / 12437626						\$5.54	
500,000 / 02/2011	0	0	0	0	0	\$0.00000	
Black Photocopier						\$0.00	
Connected							
IKON							

Cheshire Medical Center

Date of Last Upgrade: 4/1/2011

Make-Model / Speed Serial Number / Vendor ID Life / Intro Date Connectivity / Printer Exp Date Vendor	7/1/2011 Meter	6/30/2012 Meter	2011/12 Annual Volume	2012/13 Projected Volume	Volume Difference	Cost/Copy Annual Cost	Recommendations
Cheshire Medical Center							
Special Services							
Ricoh SP5100 45 CPM	2,689	11,215	8,526	10,396	-1,870	\$0.012000	None at this time.
S2109300073 / 12437643						\$102.31	
1,000,000 / 05/2007	0	0	0	0	0	\$0.00000	
Black Network Printer						\$0.00	
Connected							
IKON							
Specialty Medicine - Nurses'							
Ricoh MP201SPF 21 CPM	2,663	41,113	38,450	51,540	-13,090	\$0.003900	None at this time.
W3018500946 / 12437556						\$149.96	
500,000 / 02/2011	0	0	0	0	0	\$0.00000	
Black Photocopier						\$0.00	
Connected							
IKON							
Specialty Medicine - SIM1							
Ricoh SP5100 45 CPM	10,165	52,086	41,921	47,188	-5,267	\$0.012000	None at this time.
S2109300288 / 12437535						\$503.05	
1,000,000 / 05/2007	0	0	0	0	0	\$0.00000	
Black Network Printer						\$0.00	
Connected							
IKON							

Cheshire Medical Center

Date of Last Upgrade: 4/1/2011

Make-Model / Speed Serial Number / Vendor ID Life / Intro Date Connectivity / Printer Exp Date Vendor	7/1/2011 Meter	6/30/2012 Meter	2011/12 Annual Volume	2012/13 Projected Volume	Volume Difference	Cost/Copy Annual Cost	Recommendations
Cheshire Medical Center							
Specialty Medicine - SIM1 Med							
Ricoh SP5100 45 CPM	0	819	819	271	548	\$0.012000	None at this time.
S2109300100 / 12437558						\$9.83	
1,000,000 / 05/2007	0	0	0	0	0	\$0.00000	
Black Network Printer						\$0.00	
Connected							
IKON							
Specialty Medicine - SIM2							
Ricoh MPC300 32 CPM Black & Color	6,642	70,196	63,554	41,650	21,904	\$0.003900	None at this time.
S7214900320 / 12437557						\$247.86	
750,000 / 01/2011	814	15,232	14,418	0	14,418	\$0.04995	
Color Photocopier						\$720.18	
Connected							
IKON							
Specialty Medicine - SIM2 Med							
Ricoh SP5100 45 CPM	340	9,772	9,432	780	8,652	\$0.012000	None at this time.
S2109300336 / 12437534						\$113.18	
1,000,000 / 05/2007	0	0	0	0	0	\$0.00000	
Black Network Printer						\$0.00	
Connected							
IKON							

Cheshire Medical Center

Date of Last Upgrade: 4/1/2011

<i>Make-Model / Speed</i>							
<i>Serial Number / Vendor ID</i>							
<i>Life / Intro Date</i>							
<i>Connectivity / Printer Exp Date</i>							
<i>Vendor</i>	<i>7/1/2011 Meter</i>	<i>6/30/2012 Meter</i>	<i>2011/12 Annual Volume</i>	<i>2012/13 Projected Volume</i>	<i>Volume Difference</i>	<i>Cost/Copy Annual Cost</i>	<i>Recommendations</i>
Cheshire Medical Center							
STORAGE							
Ricoh MP201SPF 21 CPM	0	0	0	0	0	\$0.003900	None at this time.
W3019102446 /						\$0.00	
500,000 / 02/2011	0	0	0	0	0	\$0.00000	
Black Photocopier						\$0.00	
Connected							
IKON							
Ricoh MP201SPF 21 CPM	5,374	5,374	0	0	0	\$0.003900	None at this time.
W3009600859 / 12437739						\$0.00	
500,000 / 02/2011	0	0	0	0	0	\$0.00000	
Black Photocopier						\$0.00	
Connected							
IKON							
Ricoh MPC300 32 CPM Black & Color	35,297	35,297	0	194,823	-194,823	\$0.003900	None at this time.
S7206000312 / 12437496						\$0.00	
750,000 / 01/2011	115	115	0	0	0	\$0.04995	
Color Photocopier						\$0.00	
Connected							
IKON							

Cheshire Medical Center

Date of Last Upgrade: 4/1/2011

<i>Make-Model / Speed</i>	<i>Serial Number / Vendor ID</i>	<i>Life / Intro Date</i>	<i>Connectivity / Printer Exp Date</i>	<i>Vendor</i>	<i>7/1/2011 Meter</i>	<i>6/30/2012 Meter</i>	<i>2011/12 Annual Volume</i>	<i>2012/13 Projected Volume</i>	<i>Volume Difference</i>	<i>Cost/Copy Annual Cost</i>	<i>Recommendations</i>
Cheshire Medical Center											
Ricoh SP3410DN 30 CPM	S5818700199 /	750,000 / 03/2010	Black Network Printer	Connected	0	0	0	0	0	\$0.012000	None at this time.
										\$0.00	
					0	0	0	0	0	\$0.000000	
										\$0.00	
IKON											
Ricoh SP3410DN 30 CPM	S5809600253 /	750,000 / 03/2010	Black Network Printer	Connected	0	0	0	0	0	\$0.012000	None at this time.
										\$0.00	
					0	0	0	0	0	\$0.000000	
										\$0.00	
IKON											
Ricoh SP5100 45 CPM	S2109300382 / 12437477	1,000,000 / 05/2007	Black Network Printer	Connected	1,214	1,214	0	0	0	\$0.012000	None at this time.
										\$0.00	
					0	0	0	0	0	\$0.000000	
										\$0.00	
IKON											

Cheshire Medical Center

Date of Last Upgrade: 4/1/2011

<i>Make-Model / Speed</i>							
<i>Serial Number / Vendor ID</i>							
<i>Life / Intro Date</i>							
<i>Connectivity / Printer Exp Date</i>							
<i>Vendor</i>	<i>7/1/2011 Meter</i>	<i>6/30/2012 Meter</i>	<i>2011/12 Annual Volume</i>	<i>2012/13 Projected Volume</i>	<i>Volume Difference</i>	<i>Cost/Copy Annual Cost</i>	<i>Recommendations</i>
Cheshire Medical Center							
Ricoh SP5100 45 CPM	2,058	2,058	0	0	0	\$0.012000	None at this time.
S2109300191 / 12437478						\$0.00	
1,000,000 / 05/2007	0	0	0	0	0	\$0.000000	
Black Network Printer						\$0.00	
Connected							
IKON							
Ricoh SP5100 45 CPM	2,541	2,541	0	20,000	-20,000	\$0.012000	None at this time.
S2109200652 / 12437700						\$0.00	
1,000,000 / 05/2007	0	0	0	0	0	\$0.000000	
Black Network Printer						\$0.00	
Connected							
IKON							
Ricoh SP5100 45 CPM	1,067	1,067	0	13,511	-13,511	\$0.012000	None at this time.
S2109300352 / 12437730						\$0.00	
1,000,000 / 05/2007	0	0	0	0	0	\$0.000000	
Black Network Printer						\$0.00	
Connected							
IKON							

Cheshire Medical Center

Date of Last Upgrade: 4/1/2011

<i>Make-Model / Speed</i>							
<i>Serial Number / Vendor ID</i>							
<i>Life / Intro Date</i>							
<i>Connectivity / Printer Exp Date</i>							
<i>Vendor</i>	<i>7/1/2011 Meter</i>	<i>6/30/2012 Meter</i>	<i>2011/12 Annual Volume</i>	<i>2012/13 Projected Volume</i>	<i>Volume Difference</i>	<i>Cost/Copy Annual Cost</i>	<i>Recommendations</i>
Cheshire Medical Center							
Ricoh SP5100 45 CPM	2	2	0	16,820	-16,820	\$0.012000	None at this time.
S2109300326 / 12437737						\$0.00	
1,000,000 / 05/2007	0	0	0	0	0	\$0.00000	
Black Network Printer						\$0.00	
Connected							
IKON							
Ricoh SPC320DN 26 CPM	0	0	0	5,076	-5,076	\$0.012000	None at this time.
S9918500169 / 12481988						\$0.00	
500,000 / 02/2011	0	0	0	0	0	\$0.08325	
Color Network Printer						\$0.00	
Connected							
IKON							
Ricoh SPC320DN 26 CPM	0	0	0	0	0	\$0.012000	None at this time.
S9918701315 /						\$0.00	
500,000 / 02/2011	0	0	0	0	0	\$0.08325	
Color Network Printer						\$0.00	
Connected							
IKON							

Cheshire Medical Center

Date of Last Upgrade: 4/1/2011

<i>Make-Model / Speed</i>	<i>Serial Number / Vendor ID</i>	<i>Life / Intro Date</i>	<i>Connectivity / Printer Exp Date</i>	<i>Vendor</i>	<i>7/1/2011 Meter</i>	<i>6/30/2012 Meter</i>	<i>2011/12 Annual Volume</i>	<i>2012/13 Projected Volume</i>	<i>Volume Difference</i>	<i>Cost/Copy Annual Cost</i>	<i>Recommendations</i>
Cheshire Medical Center											
Ricoh SPC320DN 26 CPM	S9918500129 /	500,000 / 02/2011	Color Network Printer	Connected	0	0	0	1,429	-1,429	\$0.012000	None at this time.
										\$0.00	
					0	0	0	1,421	-1,421	\$0.08325	
										\$0.00	
IKON											
STORAGE (for Med Records)											
Ricoh SP5100 45 CPM	S2109300202 / 12437727	1,000,000 / 05/2007	Black Network Printer	Connected	1,665	1,665	0	91,966	-91,966	\$0.012000	None at this time.
										\$0.00	
					0	0	0	0	0	\$0.00000	
										\$0.00	
IKON											
STORAGE (for Wellness)											
Ricoh SP5100 45 CPM	S2109300126 / 12437735	1,000,000 / 05/2007	Black Network Printer	Connected	2	2	0	0	0	\$0.012000	None at this time.
										\$0.00	
					0	0	0	0	0	\$0.00000	
										\$0.00	
IKON											

Cheshire Medical Center

Date of Last Upgrade: 4/1/2011

<i>Make-Model / Speed</i>							
<i>Serial Number / Vendor ID</i>							
<i>Life / Intro Date</i>							
<i>Connectivity / Printer Exp Date</i>							
<i>Vendor</i>	<i>7/1/2011 Meter</i>	<i>6/30/2012 Meter</i>	<i>2011/12 Annual Volume</i>	<i>2012/13 Projected Volume</i>	<i>Volume Difference</i>	<i>Cost/Copy Annual Cost</i>	<i>Recommendations</i>
Cheshire Medical Center							
Support Services							
Ricoh MPC4501 45 CPM	0	28,901	28,901	48,788	-19,887	\$0.003900	None at this time.
V9515100985 / 12437420						\$112.71	
1,000,000 / 11/2010	0	17,834	17,834	0	17,834	\$0.04995	
Color Photocopier						\$890.81	
Connected							
IKON							
Switchboard							
Ricoh MP3351 33 CPM	0	113,794	113,794	121,069	-7,275	\$0.003900	None at this time.
V8314900833 / 12437518						\$443.80	
750,000 / 12/2009	0	0	0	0	0	\$0.00000	
Black Photocopier						\$0.00	
Connected							
IKON							
Telephone Switch Room							
Ricoh MPC300 32 CPM Black & Color	791	4,842	4,051	3,301	750	\$0.003900	None at this time.
S7214900306 / 12437519						\$15.80	
750,000 / 01/2011	55	1,234	1,179	0	1,179	\$0.04995	
Color Photocopier						\$58.89	
Connected							
IKON							

Cheshire Medical Center

Date of Last Upgrade: 4/1/2011

Make-Model / Speed Serial Number / Vendor ID Life / Intro Date Connectivity / Printer Exp Date Vendor	7/1/2011 Meter	6/30/2012 Meter	2011/12 Annual Volume	2012/13 Projected Volume	Volume Difference	Cost/Copy Annual Cost	Recommendations
Cheshire Medical Center							
Thompson Unit - Labels							
Ricoh SP5100 45 CPM	1,813	6,758	4,945	12,224	-7,279	\$0.012000	None at this time.
S2109300039 / 12437631						\$59.34	
1,000,000 / 05/2007	0	0	0	0	0	\$0.00000	
Black Network Printer						\$0.00	
Connected							
IKON							
Thompson Unit - Nurses' Station							
Ricoh SP5100 45 CPM	10,467	57,304	46,837	0	46,837	\$0.012000	None at this time.
S2109200604 / 12437603						\$562.04	
1,000,000 / 05/2007	0	0	0	0	0	\$0.00000	
Black Network Printer						\$0.00	
Connected							
IKON							
Thompson Unit - Nurses'							
Ricoh MP201SPF 21 CPM	0	4,198	4,198	74,784	-70,586	\$0.003900	None at this time.
W3019101557 / 12437414						\$16.37	
500,000 / 02/2011	0	0	0	0	0	\$0.00000	
Black Photocopier						\$0.00	
Connected							
IKON							

Cheshire Medical Center

Date of Last Upgrade: 4/1/2011

Make-Model / Speed Serial Number / Vendor ID Life / Intro Date Connectivity / Printer Exp Date Vendor	7/1/2011 Meter	6/30/2012 Meter	2011/12 Annual Volume	2012/13 Projected Volume	Volume Difference	Cost/Copy Annual Cost	Recommendations
Cheshire Medical Center							
Transcription - 1							
Ricoh SP5100 45 CPM	2	53,827	53,825	53,268	557	\$0.012000	None at this time.
S2109300265 / 12437568						\$645.90	
1,000,000 / 05/2007	0	0	0	0	0	\$0.00000	
Black Network Printer						\$0.00	
Connected							
IKON							
Transcription - 2							
Ricoh SP5100 45 CPM	5,666	25,613	19,947	24,332	-4,385	\$0.012000	None at this time.
S2109300308 / 12437569						\$239.36	
1,000,000 / 05/2007	0	0	0	0	0	\$0.00000	
Black Network Printer						\$0.00	
Connected							
IKON							
Transcription - Med Sec I							
Ricoh MPC300 32 CPM Black & Color	13,548	53,167	39,619	35,044	4,575	\$0.003900	None at this time.
S7206000281 / 12437501						\$154.51	
750,000 / 01/2011	234	559	325	0	325	\$0.04995	
Color Photocopier						\$16.23	
Connected							
IKON							

Cheshire Medical Center

Date of Last Upgrade: 4/1/2011

Make-Model / Speed Serial Number / Vendor ID Life / Intro Date Connectivity / Printer Exp Date Vendor	7/1/2011 Meter	6/30/2012 Meter	2011/12 Annual Volume	2012/13 Projected Volume	Volume Difference	Cost/Copy Annual Cost	Recommendations
Cheshire Medical Center							
Transcription - Med Secretary II							
Ricoh MPC300 32 CPM Black & Color	15,677	30,638	14,961	22,241	-7,280	\$0.003900	None at this time.
S7214900318 / 12437500						\$58.35	
750,000 / 01/2011	101	317	216	0	216	\$0.04995	
Color Photocopier						\$10.79	
Connected							
IKON							
Transcription - Radiology							
Ricoh SP5100 45 CPM	2,137	10,600	8,463	20,000	-11,537	\$0.012000	None at this time.
S2109300340 / 12437567						\$101.56	
1,000,000 / 05/2007	0	0	0	0	0	\$0.00000	
Black Network Printer						\$0.00	
Connected							
IKON							
Vascular - Lab							
Ricoh MP201SPF 21 CPM	0	3,571	3,571	32,391	-28,820	\$0.003900	None at this time.
W3009600747 / 12437407						\$13.93	
500,000 / 02/2011	0	0	0	0	0	\$0.00000	
Black Photocopier						\$0.00	
Connected							
IKON							

Cheshire Medical Center

Date of Last Upgrade: 4/1/2011

Make-Model / Speed Serial Number / Vendor ID Life / Intro Date Connectivity / Printer Exp Date Vendor	7/1/2011 Meter	6/30/2012 Meter	2011/12 Annual Volume	2012/13 Projected Volume	Volume Difference	Cost/Copy Annual Cost	Recommendations
Cheshire Medical Center							
Volunteer Department							
Ricoh MP3351 33 CPM	4,323	28,586	24,263	5,113	19,150	\$0.003900	None at this time.
V8314900669 / 12437672						\$94.63	
750,000 / 12/2009	0	0	0	0	0	\$0.00000	
Black Photocopier						\$0.00	
Connected							
IKON							
WACHU - L&D							
Ricoh SP5100 45 CPM	2	6,004	6,002	20,000	-13,998	\$0.012000	None at this time.
S2109300296 / 12437635						\$72.02	
1,000,000 / 05/2007	0	0	0	0	0	\$0.00000	
Black Network Printer						\$0.00	
Connected							
IKON							
WACHU - Nursery							
Ricoh SP5100 45 CPM	2	961	959	997	-38	\$0.012000	None at this time.
S2109300341 / 12437723						\$11.51	
1,000,000 / 05/2007	0	0	0	0	0	\$0.00000	
Black Network Printer						\$0.00	
Connected							
IKON							

Date of Last Upgrade: 4/1/2011

Annual Cost Recommendations

\$1,448.30

\$52,537.85

Cheshire Medical Center

Date of Last Upgrade: 4/1/2011

<i>Make-Model / Speed</i>	<i>Serial Number / Vendor ID</i>	<i>Life / Intro Date</i>	<i>Connectivity / Printer Exp Date</i>	<i>Vendor</i>	<i>7/1/2011 Meter</i>	<i>6/30/2012 Meter</i>	<i>2011/12 Annual Volume</i>	<i>2012/13 Projected Volume</i>	<i>Volume Difference</i>	<i>Cost/Copy Annual Cost</i>	<i>Recommendations</i>
Children's Learning Center											
Daycare Office											
Ricoh MPC3001 30 CPM	V9315000946 / 12437481	750,000 / 11/2010	Color Photocopier	Connected	0	29,432	29,432	33,667	-4,235	\$0.003900	None at this time.
										\$114.78	
					0	20,957	20,957	0	20,957	\$0.04995	
										\$1,046.80	
Director's Office - Deb Hunter											
Ricoh MP201SPF 21 CPM	W3019100532 / 12437480	500,000 / 02/2011	Black Photocopier	Connected	0	5,490	5,490	0	5,490	\$0.003900	None at this time.
										\$21.41	
					0	0	0	0	0	\$0.00000	
										\$0.00	
Subtotals B&W							34,922	33,667		\$136.20	
Subtotals Color							20,957	0		\$1,046.80	

Cheshire Medical Center

Date of Last Upgrade: 4/1/2011

Make-Model / Speed Serial Number / Vendor ID Life / Intro Date Connectivity / Printer Exp Date Vendor	7/1/2011 Meter	6/30/2012 Meter	2011/12 Annual Volume	2012/13 Projected Volume	Volume Difference	Cost/Copy Annual Cost	Recommendations
Emerald Street Building							
Ophthalmology							
Xerox CQ8570DN 40 CPM	0	0	0	5,000	-5,000	\$0.014900	None at this time.
XFN102009 /						\$0.00	
750,000 / 10/2010	0	6,107	6,107	15,860	-9,753	\$0.08900	
Color Network Printer						\$543.52	
Connected 11/15/2016							
VARY							
Ophthalmology - Nurses' Station							
Ricoh MPC300 32 CPM Black & Color	2,806	22,071	19,265	7,845	11,420	\$0.003900	None at this time.
S7215100197 /						\$75.13	
750,000 / 01/2011	303	3,334	3,031	10,000	-6,969	\$0.04995	
Color Photocopier						\$151.40	
Connected							
IKON							
Ophthalmology - Reception							
Ricoh MP201SPF 21 CPM	4,504	37,887	33,383	20,032	13,351	\$0.003900	None at this time.
W3018501554 / 12437416						\$130.19	
500,000 / 02/2011	0	0	0	0	0	\$0.00000	
Black Photocopier						\$0.00	
Connected							
IKON							

Cheshire Medical Center

Date of Last Upgrade: 4/1/2011

<i>Make-Model / Speed</i> <i>Serial Number / Vendor ID</i> <i>Life / Intro Date</i> <i>Connectivity / Printer Exp Date</i> <i>Vendor</i>	<i>7/1/2011</i> <i>Meter</i>	<i>6/30/2012</i> <i>Meter</i>	<i>2011/12</i> <i>Annual</i> <i>Volume</i>	<i>2012/13</i> <i>Projected</i> <i>Volume</i>	<i>Volume</i> <i>Difference</i>	<i>Cost/Copy</i> <i>Annual Cost</i>	<i>Recommendations</i>
Emerald Street Building							
Optical Shop							
Ricoh MP201SPF 21 CPM	0	13,093	13,093	6,317	6,776	\$0.003900	None at this time.
W3019100531 /						\$51.06	
500,000 / 02/2011	0	0	0	0	0	\$0.00000	
Black Photocopier						\$0.00	
Connected							
IKON							
Urology							
Ricoh MP201SPF 21 CPM	7,269	47,977	40,708	20,000	20,708	\$0.003900	None at this time.
W3018501553 / 12437415						\$158.76	
500,000 / 02/2011	0	0	0	0	0	\$0.00000	
Black Photocopier						\$0.00	
Connected							
IKON							
Ricoh SPC320DN 26 CPM	0	17	17	20,000	-19,983	\$0.012000	None at this time.
S9918500109 / 12481987						\$0.20	
500,000 / 02/2011	0	202	202	0	202	\$0.08325	
Color Network Printer						\$16.82	
Connected							
IKON							
	Subtotals B&W		106,466	79,194		\$415.36	
	Subtotals Color		9,340	25,860		\$711.74	

Cheshire Medical Center

Date of Last Upgrade: 4/1/2011

Make-Model / Speed Serial Number / Vendor ID Life / Intro Date Connectivity / Printer Exp Date Vendor	7/1/2011 Meter	6/30/2012 Meter	2011/12 Annual Volume	2012/13 Projected Volume	Volume Difference	Cost/Copy Annual Cost	Recommendations
Island Street Building							
Exam Room 1							
Ricoh SP5100 45 CPM	667	7,157	6,490	4,736	1,754	\$0.012000	None at this time.
S2109600019 / 12437461						\$77.88	
1,000,000 / 05/2007	0	0	0	0	0	\$0.00000	
Black Network Printer						\$0.00	
Connected							
IKON							
Main Office							
Ricoh MPC4501 45 CPM	9,004	80,940	71,936	24,401	47,535	\$0.003900	Over Used
V9515001705 / 12437462						\$280.55	
1,000,000 / 11/2010	109	989	880	0	880	\$0.04995	
Color Photocopier						\$43.96	
Connected							
IKON							

Cheshire Medical Center

Date of Last Upgrade: 4/1/2011

<i>Make-Model / Speed</i>	<i>Serial Number / Vendor ID</i>	<i>Life / Intro Date</i>	<i>Connectivity / Printer Exp Date</i>	<i>Vendor</i>	<i>7/1/2011 Meter</i>	<i>6/30/2012 Meter</i>	<i>2011/12 Annual Volume</i>	<i>2012/13 Projected Volume</i>	<i>Volume Difference</i>	<i>Cost/Copy Annual Cost</i>	<i>Recommendations</i>
Island Street Building											
Phone Room											
Ricoh SP5100 45 CPM	S2109300280 / 12437460	1,000,000 / 05/2007	Black Network Printer	Connected	7,171	45,664	38,493	3,648	34,845	\$0.012000	None at this time.
										\$461.92	
					0	0	0	0	0	\$0.00000	
										\$0.00	
IKON											
Ricoh SP5100 45 CPM	S2109300141 / 12437463	1,000,000 / 05/2007	Black Network Printer	Connected	3,030	25,499	22,469	51,080	-28,611	\$0.012000	None at this time.
										\$269.63	
					0	0	0	0	0	\$0.00000	
										\$0.00	
IKON											
STORAGE											
Ricoh SP5100 45 CPM	S2109600013 / 12437738	1,000,000 / 05/2007	Black Network Printer	Connected	4,466	4,466	0	16,517	-16,517	\$0.012000	None at this time.
										\$0.00	
					0	0	0	0	0	\$0.00000	
										\$0.00	
IKON											
Subtotals B&W							139,388	100,382		\$1,089.97	
Subtotals Color							880	0		\$43.96	

Cheshire Medical Center

Date of Last Upgrade: 4/1/2011

Make-Model / Speed Serial Number / Vendor ID Life / Intro Date Connectivity / Printer Exp Date Vendor	7/1/2011 Meter	6/30/2012 Meter	2011/12 Annual Volume	2012/13 Projected Volume	Volume Difference	Cost/Copy Annual Cost	Recommendations
Kingsbury House							
Admin - Marketing							
Ricoh SPC430 37 CPM	992	1,413	421	1,100	-679	\$0.012000	None at this time.
S9318501512 / 12437485						\$5.05	
750,000 / 07/2010	2,916	5,278	2,362	5,700	-3,338	\$0.08325	
Color Network Printer						\$196.64	
Connected							
IKON							
Development							
Ricoh MPC300 32 CPM Black & Color	10,375	17,202	6,827	18,912	-12,085	\$0.003900	None at this time.
S7215100158 / 12437484						\$26.63	
750,000 / 01/2011	5,101	16,983	11,882	29,704	-17,822	\$0.04995	
Color Photocopier						\$593.51	
Connected							
IKON							
Ground Floor							
Ricoh MP3351 33 CPM	7,051	41,810	34,759	45,541	-10,782	\$0.003900	None at this time.
V8315000190 / 12437483						\$135.56	
750,000 / 12/2009	0	0	0	0	0	\$0.00000	
Black Photocopier						\$0.00	
Connected							
IKON							

Date of Last Upgrade: 4/1/2011

		<i>2011/12</i>	<i>2012/13</i>			
<i>7/1/2011</i>	<i>6/30/2012</i>	<i>Annual</i>	<i>Projected</i>	<i>Volume</i>	<i>Cost/Copy</i>	
<i>Meter</i>	<i>Meter</i>	<i>Volume</i>	<i>Volume</i>	<i>Difference</i>	<i>Annual Cost</i>	<i>Recommendations</i>

9,241	77,300	68,059	21,298	46,761	\$0.003900	Over Used
					\$265.43	
4,558	16,028	11,470	0	11,470	\$0.04995	
					\$572.93	
Subtotals B&W		110,066	86,851		\$432.67	
Subtotals Color		25,714	35,404		\$1,363.07	

Cheshire Medical Center

Date of Last Upgrade: 4/1/2011

Make-Model / Speed

Serial Number / Vendor ID

Life / Intro Date

Connectivity / Printer Exp Date

Vendor

[illegible]

Monadnock Central - Jaffrey

Storage

Ricoh SP5100 45 CPM

S2109200634 / 12437736

1,000,000 / 05/2007

Black Network Printer

Connected

IKON

0	0	0	20,000	-20,000	\$0.012000	None at this time.
					\$0.00	
0	0	0	0	0	\$0.000000	
					\$0.00	

Subtotals B&W

0

20,000

\$0.00

Subtotals Color

0

0

\$0.00

Cheshire Medical Center

Date of Last Upgrade: 4/1/2011

Make-Model / Speed Serial Number / Vendor ID Life / Intro Date Connectivity / Printer Exp Date Vendor	7/1/2011 Meter	6/30/2012 Meter	2011/12 Annual Volume	2012/13 Projected Volume	Volume Difference	Cost/Copy Annual Cost	Recommendations
Peterborough Campus							
Main Office							
Ricoh SP5100 45 CPM	0	0	0	0	0	\$0.012000	None at this time.
TBD						\$0.00	
1,000,000 / 05/2007	0	0	0	0	0	\$0.00000	
Black Network Printer						\$0.00	
Connected							
IKON							
Peterborough - Reception							
Ricoh MP201SPF 21 CPM	0	6,662	6,662	20,000	-13,338	\$0.003900	None at this time.
W3018801634 / 12437437						\$25.98	
500,000 / 02/2011	0	0	0	0	0	\$0.00000	
Black Photocopier						\$0.00	
Connected							
IKON							
Reception							
Ricoh MP201SPF 21 CPM	0	3,086	3,086	0	3,086	\$0.003900	None at this time.
W3028700146 / 12647305						\$12.04	
500,000 / 02/2011	0	0	0	0	0	\$0.00000	
Black Photocopier						\$0.00	
Not Connected							
IKON							
Subtotals B&W			9,748	20,000		\$38.02	
Subtotals Color			0	0		\$0.00	

Date of Last Upgrade: 4/1/2011

[illegible]

Ricoh SPC320DN 26 CPM	0	0	0	19	-19	\$0.012000	None at this time.
S9918500052 / 12481986						\$0.00	
500,000 / 02/2011	0	0	0	212	-212	\$0.08325	
Color Network Printer						\$0.00	
Connected							
IKON							

Subtotals Color	0	212	\$0.00
------------------------	----------	------------	---------------

Cheshire Medical Center

Date of Last Upgrade: 4/1/2011

Make-Model / Speed Serial Number / Vendor ID Life / Intro Date Connectivity / Printer Exp Date Vendor	7/1/2011 Meter	6/30/2012 Meter	2011/12 Annual Volume	2012/13 Projected Volume	Volume Difference	Cost/Copy Annual Cost	Recommendations
Railroad Street 51							
Audiology - Reception							
Ricoh MP201SPF 21 CPM	0	11,278	11,278	20,000	-8,722	\$0.003900	None at this time.
W3019100529 / 12631789						\$43.98	
500,000 / 02/2011	0	0	0	0	0	\$0.00000	
Black Photocopier						\$0.00	
Connected							
IKON							
Dermatology - Nurses' Station							
Ricoh SP5100 45 CPM	1,451	7,308	5,857	20,000	-14,143	\$0.012000	None at this time.
S2109300355 / 12437536						\$70.28	
1,000,000 / 05/2007	0	0	0	0	0	\$0.00000	
Black Network Printer						\$0.00	
Connected							
IKON							

Cheshire Medical Center

Date of Last Upgrade: 4/1/2011

Make-Model / Speed Serial Number / Vendor ID Life / Intro Date Connectivity / Printer Exp Date Vendor	7/1/2011 Meter	6/30/2012 Meter	2011/12 Annual Volume	2012/13 Projected Volume	Volume Difference	Cost/Copy Annual Cost	Recommendations
Railroad Street 51							
Dermatology - Reception							
Ricoh MPC3001 30 CPM V9315100225 / 12437392 750,000 / 11/2010 Color Photocopier Connected IKON	4,772	24,035	19,263	25,810	-6,547	\$0.003900 \$75.13	None at this time.
	475	2,383	1,908	0	1,908	\$0.04995 \$95.30	
Ricoh SP5100 45 CPM S2109300230 / 12437559 1,000,000 / 05/2007 Black Network Printer Connected IKON	5,323	27,846	22,523	20,000	2,523	\$0.012000 \$270.28	None at this time.
	0	0	0	0	0	\$0.00000 \$0.00	
	Subtotals B&W		58,921	85,810		\$459.67	
	Subtotals Color		1,908	0		\$95.30	

Cheshire Medical Center

Date of Last Upgrade: 4/1/2011

<i>Make-Model / Speed</i>							
<i>Serial Number / Vendor ID</i>							
<i>Life / Intro Date</i>							
<i>Connectivity / Printer Exp Date</i>							
<i>Vendor</i>	<i>7/1/2011 Meter</i>	<i>6/30/2012 Meter</i>	<i>2011/12 Annual Volume</i>	<i>2012/13 Projected Volume</i>	<i>Volume Difference</i>	<i>Cost/Copy Annual Cost</i>	<i>Recommendations</i>
Walpole Campus							
Main Office							
Ricoh MPC3001 30 CPM	30,215	151,054	120,839	77,955	42,884	\$0.003900	High B/W
V9315100283 / 12437555						\$471.27	
750,000 / 11/2010	974	5,964	4,990	0	4,990	\$0.04995	
Color Photocopier						\$249.25	
Connected							
IKON							
Prescriptions							
Ricoh SP5100 45 CPM	616	3,362	2,746	2,624	122	\$0.012000	None at this time.
S2109300311 / 12437464						\$32.95	
1,000,000 / 05/2007	0	0	0	0	0	\$0.00000	
Black Network Printer						\$0.00	
Connected							
IKON							
Ricoh SP5100 45 CPM	2	2,828	2,826	1,962	864	\$0.012000	None at this time.
S2109300150 / 12437554						\$33.91	
1,000,000 / 05/2007	0	0	0	0	0	\$0.00000	
Black Network Printer						\$0.00	
Connected							
IKON							
	Subtotals B&W		126,411	82,541		\$538.14	
	Subtotals Color		4,990	0		\$249.25	

Cheshire Medical Center

Date of Last Upgrade: 4/1/2011

<i>Make-Model / Speed</i>							
<i>Serial Number / Vendor ID</i>							
<i>Life / Intro Date</i>							
<i>Connectivity / Printer Exp Date</i>	<i>7/1/2011</i>	<i>6/30/2012</i>	<i>2011/12</i>	<i>2012/13</i>	<i>Volume</i>	<i>Cost/Copy</i>	
<i>Vendor</i>	<i>Meter</i>	<i>Meter</i>	<i>Annual</i>	<i>Projected</i>	<i>Difference</i>	<i>Annual Cost</i>	<i>Recommendations</i>
Winchester Campus							
Main Office							
Ricoh MPC3001 30 CPM	9,578	49,948	40,370	30,370	10,000	\$0.003900	None at this time.
V9315100273 / 12437467						\$157.44	
750,000 / 11/2010	521	3,947	3,426	0	3,426	\$0.04995	
Color Photocopier						\$171.13	
Connected							
IKON							
Prescriptions							
Ricoh SP5100 45 CPM	828	5,127	4,299	4,032	267	\$0.012000	None at this time.
S2109300323 / 12481978						\$51.59	
1,000,000 / 05/2007	0	0	0	0	0	\$0.00000	
Black Network Printer						\$0.00	
Connected							
IKON							
	Subtotals B&W		44,669	34,402		\$209.03	
	Subtotals Color		3,426	0		\$171.13	
Hospital Wide Black Totals			11,650,670	12,654,173		\$68,601.33	
Hospital Wide Color Totals			1,185,911	849,147		\$57,043.67	

Masters Usage Expenses

This table is provided as a courtesy to show at a glance your average Masters usage and expense for all high-speed duplicators.

<i>Make-Model Serial Number/Vendor ID #</i>	<i># Masters Used</i>	<i># Masters Allowed</i>	<i>Avg Masters/100 copies</i>	<i># Billed</i>	<i>Cost/Master</i>	<i>Annual Cost</i>
Cheshire Medical Center						
Print Shop						
Risograph RZ310 81830878 C5385	58	403	695	0	\$0.27	\$0.00
	<i>Totals</i>			<i>0</i>		<i>\$0.00</i>

SPC Service & Supply Cost Savings

This table compares your equipment cost per copy for service and supplies (black prints or copies only) before becoming an SPC client with your projected cost per copy through SPC presently. Annual Volume represents actual projected volume when you first became an SPC client on 9/1/2006. If all things remained the same, this table demonstrates your average annual and five-year savings.

<i>Annual Volume</i>	<i>Before SPC CPC</i>	<i>After SPC CPC</i>	<i>SPC's CPC Savings</i>	<i>SPC's Annual Cost Savings</i>	<i>SPC's 5-year Cost Savings</i>
8,581,702	\$0.01385	\$0.00602	\$0.00783	\$67,194.73	\$335,973.65

Projected Equipment Costs by Building - Black

This table represents projected expenses for BLACK prints or copies by building based on recent activity. Approximate current paper case costs and averaged current annual lease payment are figured in to provide budget information for the upcoming fiscal year.

Building Name	Projected Volume	Service & Supply Cost	Paper Cost \$24.81/Case	Equipment Cost	Total Cost
Brattleboro Campus	74,704	\$298.07	\$370.68	\$1,473.85	\$2,142.60
Cheshire Medical Center	10,945,375	\$66,499.29	\$54,310.95	\$215,943.34	\$336,753.58
Children's Learning Center	34,922	\$139.34	\$173.28	\$688.98	\$1,001.61
Emerald Street Building	106,466	\$424.94	\$528.28	\$2,100.49	\$3,053.71
Island Street Building	139,388	\$1,115.34	\$691.64	\$2,750.01	\$4,557.00
Kingsbury House	110,066	\$442.65	\$546.15	\$2,171.51	\$3,160.31
Monadnock Central - Jaffrey	0	\$0.00	\$0.00	\$0.00	\$0.00
Peterborough Campus	9,748	\$38.89	\$48.37	\$192.32	\$279.58
Railroad Street 117	0	\$0.00	\$0.00	\$0.00	\$0.00
Railroad Street 51	58,921	\$470.36	\$292.37	\$1,162.46	\$1,925.19
Walpole Campus	126,411	\$550.57	\$627.25	\$2,493.99	\$3,671.81
Winchester Campus	44,669	\$213.87	\$221.65	\$881.28	\$1,316.80
Totals	11,650,670	\$70,193.32	\$57,810.62	\$229,858.24	\$357,862.18

Service & Supply Usage Profile by Vendor - Black

This table represents actual expenses for BLACK prints or copies by vendor for the current year along with projected service & supply expenses for the upcoming fiscal year. Vendor typically invoices 80% of projected costs annually in advance. Cost per copy typically increases by 5% or CPI annually, whichever is less. Next year's increase will be **2.3%**.

<i>Vendor</i>	<i>Equipment Type</i>	<i>2011/12 Annual Volume</i>	<i>2011/12 Cost Per Copy</i>	<i>2011/12 Total Cost</i>	<i>2012/13 Cost Per Copy</i>	<i>2012/13 Projected Cost</i>
Ricoh USA	Color Photocopier	2,600,664	\$0.00390	\$10,142.59	\$0.00399	\$20,519.24
Ricoh USA	Color Network Printer	45,457	\$0.01200	\$545.48	\$0.01228	\$558.21
Ricoh USA	Black Photocopier	6,121,968	\$0.00390	\$23,875.68	\$0.00399	\$24,426.65
Ricoh USA	Black Network Printer	2,797,435	\$0.01200	\$33,569.22	\$0.01228	\$34,352.50
Konica-Minolta	Color Photocopier	17,709	\$0.00420	\$74.38	\$0.00430	\$76.15
Konica-Minolta	Color Photocopier	19,527	\$0.00390	\$76.16	\$0.00399	\$77.91
United Business	High-Speed Duplicator	40,329	\$0.00508	\$204.87	\$0.00520	\$209.71
Vary Technologies	Color Network Printer	7,581	\$0.01490	\$112.96	\$0.01524	\$115.53
<i>Totals and Averages</i>		<i>11,650,670</i>	<i>\$0.00589</i>	<i>\$68,601.33</i>	<i>\$0.00602</i>	<i>\$70,193.31</i>

Projected Equipment Costs by Building - Color

This table represents projected expenses for COLOR prints or copies by building based on recent activity. Approximate current paper costs are figured in to provide budget information for the upcoming fiscal year. Equipment cost is not calculated with color usage.

Building Name	Projected Volume	Service & Supply Cost	Paper Cost \$24.81/Case	Total Cost
Brattleboro Campus	16,508	\$843.56	\$81.91	\$925.47
Cheshire Medical Center	1,102,188	\$53,719.42	\$5,469.06	\$59,188.48
Children's Learning Center	20,957	\$1,070.90	\$103.99	\$1,174.89
Emerald Street Building	9,340	\$728.13	\$46.35	\$774.48
Island Street Building	880	\$44.97	\$4.37	\$49.33
Kingsbury House	25,714	\$1,394.46	\$127.59	\$1,522.05
Peterborough Campus	0	\$0.00	\$0.00	\$0.00
Railroad Street 51	1,908	\$97.50	\$9.47	\$106.97
Walpole Campus	4,990	\$254.99	\$24.76	\$279.75
Winchester Campus	3,426	\$175.07	\$17.00	\$192.07
Totals	1,185,911	\$58,329.00	\$5,884.49	\$64,213.49

Service & Supply Usage Profile by Vendor - Color

This table represents actual and projected expenses for COLOR prints or copies by vendor for the current and next fiscal year. Color copies are typically billed in arrears quarterly or semi-annually. Cost per copy typically increases by 5% or CPI annually, whichever is less. Next year's increase will be **2.3%**.

<i>Vendor</i>	<i>Equipment Type</i>	<i>2011/12 Annual Volume</i>	<i>2011/12 Cost Per Copy</i>	<i>2011/12 Actual Cost</i>	<i>2012/13 Cost Per Copy</i>	<i>2012/13 Projected Cost</i>
Ricoh USA	Color Photocopier	359,037	\$0.04995	\$17,933.90	\$0.05110	\$18,346.79
Ricoh USA	Color Network Printer	29,240	\$0.08325	\$2,434.23	\$0.08517	\$2,490.37
Konica-Minolta Business Solutions	Color	779,861	\$0.04500	\$35,093.75	\$0.04600	\$35,873.61
Vary Technologies	Color Network Printer	17,773	\$0.08900	\$1,581.79	\$0.09105	\$1,618.23
<i>Totals and Averages</i>		<i>1,185,911</i>	<i>\$0.04810</i>	<i>\$57,043.67</i>	<i>\$0.04918</i>	<i>\$58,329.00</i>

Reprographic Equipment Assessment

This chart provides the status of your equipment and details of your current lease, if any. *

Total # of Units	309
# of Units on Lease	300
# of Units Owned	9
Lease Company	Norway Savings Bank
Lease Start Date	4/1/2011
Lease End Date	11/1/2015
Term	5 Annual
Annual Payment usually due on 8/1	\$229,858.24
Remaining Payments	3

**The determination on the lease has no bearing on Service & Supply and Warranty Contracts.*

Leased Equipment

Equipment currently held as collateral under SPC-monitored or private lease.

Building	Make	Model	Serial #
Brattleboro Campus	Ricoh	SP5100	S2109300325
Brattleboro Campus	Ricoh	MPC300	S7215100321
Brattleboro Campus	Ricoh	MPC3001	V9315000935
Cheshire Medical Center	Ricoh	SPC430	S9918500208
Cheshire Medical Center	Ricoh	SP5100	S2109200665
Cheshire Medical Center	Ricoh	SP5100	S2109200126
Cheshire Medical Center	Ricoh	MPC400	S7515100027
Cheshire Medical Center	Ricoh	MPC4501	V9515100983
Cheshire Medical Center	Ricoh	SP5100	S2109300213
Cheshire Medical Center	Ricoh	SP5100	S2118500013
Cheshire Medical Center	Ricoh	SP5100	S2109600034
Cheshire Medical Center	Ricoh	SP5100	S2109200466
Cheshire Medical Center	Ricoh	MPC300	S7215100269
Cheshire Medical Center	Ricoh	SP5100	S2109300277
Cheshire Medical Center	Ricoh	MP201SPF	W3018501874
Cheshire Medical Center	Ricoh	MP201SPF	W3018501577
Cheshire Medical Center	Ricoh	MP3351	V8314900835
Cheshire Medical Center	Ricoh	SP5100	S2109300171
Cheshire Medical Center	Ricoh	SP5100	S2109200035
Cheshire Medical Center	Ricoh	MPC300	S7206000320
Cheshire Medical Center	Ricoh	SP5100	S2109300241
Cheshire Medical Center	Ricoh	SP5100	S2109300257
Cheshire Medical Center	Ricoh	SP5100	S2109300167
Cheshire Medical Center	Ricoh	MPC300	S7206000258
Cheshire Medical Center	Ricoh	SP5100	S2109300382
Cheshire Medical Center	Ricoh	MP5001	V8005800656

Cheshire Medical Center

Building	Make	Model	Serial #
Cheshire Medical Center	Ricoh	SP5100	S2109200004
Cheshire Medical Center	Ricoh	MPC3001	V9315100221
Cheshire Medical Center	Ricoh	SP5100	S2109300142
Cheshire Medical Center	Ricoh	MPC300	S7206000261
Cheshire Medical Center	Ricoh	MP3351	V8315000205
Cheshire Medical Center	Ricoh	MP201SPF	W3018501584
Cheshire Medical Center	Ricoh	MPC300	S7206000311
Cheshire Medical Center	Ricoh	MPC300	S7206000262
Cheshire Medical Center	Ricoh	MP201SPF	W3018501552
Cheshire Medical Center	Ricoh	SPC430	S9318501261
Cheshire Medical Center	Ricoh	SP5100	S2109200704
Cheshire Medical Center	Ricoh	MPC4501	V9515100973
Cheshire Medical Center	Ricoh	SP5100	S2109300182
Cheshire Medical Center	Ricoh	SP5100	S2109300255
Cheshire Medical Center	Ricoh	SP5100	S2109300023
Cheshire Medical Center	Ricoh	SP5100	S2109300077
Cheshire Medical Center	Ricoh	SP5100	S2109300113
Cheshire Medical Center	Ricoh	MP201SPF	W3018501550
Cheshire Medical Center	Ricoh	SP5100	S2109300227
Cheshire Medical Center	Ricoh	SP5100	S2109300037
Cheshire Medical Center	Ricoh	MPC300	S7206000314
Cheshire Medical Center	Ricoh	MP3351	V8314900797
Cheshire Medical Center	Ricoh	SP3410DN	S5809400086
Cheshire Medical Center	Ricoh	MP201SPF	W3018501521
Cheshire Medical Center	Ricoh	SPC320DN	S9909501363
Cheshire Medical Center	Ricoh	SP5100	S2109300074
Cheshire Medical Center	Ricoh	SP5100	S2109300199
Cheshire Medical Center	Ricoh	SP5100	S2109200687
Cheshire Medical Center	Ricoh	SPC320DN	S9918500115
Cheshire Medical Center	Ricoh	SP5100	S2109300010

Cheshire Medical Center

Building	Make	Model	Serial #
Cheshire Medical Center	Ricoh	MP201SPF	W3018501917
Cheshire Medical Center	Ricoh	MP5001	V8015001501
Cheshire Medical Center	Ricoh	SP5100	S2109300091
Cheshire Medical Center	Ricoh	MPC300	S7206000160
Cheshire Medical Center	Ricoh	MPC300	S7206000268
Cheshire Medical Center	Ricoh	MP5001	V8015001300
Cheshire Medical Center	Ricoh	SP5100	S2109300078
Cheshire Medical Center	Ricoh	MPC300	S7206000224
Cheshire Medical Center	Ricoh	MP5001	V8015001159
Cheshire Medical Center	Ricoh	MP7001	V7015100157
Cheshire Medical Center	Ricoh	MPC300	S7206000265
Cheshire Medical Center	Ricoh	SP5100	S2109300202
Cheshire Medical Center	Ricoh	SP5100	S2109300201
Cheshire Medical Center	Ricoh	MPC300	S7214900248
Cheshire Medical Center	Ricoh	MP201SPF	W3018501548
Cheshire Medical Center	Ricoh	SP5100	S2109200698
Cheshire Medical Center	Ricoh	MPC300	S7206000312
Cheshire Medical Center	Ricoh	MPC4501	V9515101023
Cheshire Medical Center	Ricoh	SP5100	S2109300013
Cheshire Medical Center	Ricoh	SP5100	S2109200556
Cheshire Medical Center	Ricoh	SP5100	S2109300356
Cheshire Medical Center	Ricoh	SP5100	S2109300281
Cheshire Medical Center	Ricoh	SP5100	S2109200402
Cheshire Medical Center	Ricoh	SP5100	S2109200569
Cheshire Medical Center	Ricoh	SP5100	S2109300371
Cheshire Medical Center	Ricoh	SP5100	S2109200432
Cheshire Medical Center	Ricoh	SP5100	S2109300377
Cheshire Medical Center	Ricoh	SP5100	S2109200165
Cheshire Medical Center	Ricoh	MP201SPF	W3019102457
Cheshire Medical Center	Ricoh	SP5100	S2109200006

Cheshire Medical Center

Building	Make	Model	Serial #
Cheshire Medical Center	Ricoh	MPC300	S7215100192
Cheshire Medical Center	Ricoh	SP5100	S2109200493
Cheshire Medical Center	Ricoh	SP5100	S2109600022
Cheshire Medical Center	Ricoh	SP5100	S2109300190
Cheshire Medical Center	Ricoh	MP201SPF	W3018501545
Cheshire Medical Center	Ricoh	MP201SPF	W3018501556
Cheshire Medical Center	Ricoh	SP3410DN	S5809600101
Cheshire Medical Center	Ricoh	MPC300	S7206000260
Cheshire Medical Center	Ricoh	MPC400	S7406000101
Cheshire Medical Center	Ricoh	MPC300	S7214900247
Cheshire Medical Center	Ricoh	SP5100	S2109300065
Cheshire Medical Center	Ricoh	MPC6501	V7610500236
Cheshire Medical Center	Ricoh	SP5100	S2109300327
Cheshire Medical Center	Ricoh	SP5100	S2109300357
Cheshire Medical Center	Ricoh	MPC300	S7215100342
Cheshire Medical Center	Ricoh	SP5100	S2109300109
Cheshire Medical Center	Ricoh	MP201SPF	W3018501897
Cheshire Medical Center	Ricoh	MP201SPF	W3018501549
Cheshire Medical Center	Ricoh	MP3351	V8314900840
Cheshire Medical Center	Ricoh	SP5100	S2109400050
Cheshire Medical Center	Ricoh	SP5100	S2109300297
Cheshire Medical Center	Ricoh	SP5100	S2109300262
Cheshire Medical Center	Ricoh	SP5100	S2109300328
Cheshire Medical Center	Ricoh	MP6001	V6915100143
Cheshire Medical Center	Ricoh	SP5100	S2109300053
Cheshire Medical Center	Ricoh	SP5100	S2109300228
Cheshire Medical Center	Ricoh	SP5100	S2109300324
Cheshire Medical Center	Ricoh	SP5100	S2109300052
Cheshire Medical Center	Ricoh	SP5100	S2109300003
Cheshire Medical Center	Ricoh	MP201SPF	W3018501555

Cheshire Medical Center

Building	Make	Model	Serial #
Cheshire Medical Center	Ricoh	SP5100	S2109300273
Cheshire Medical Center	Ricoh	SP5100	S2109300353
Cheshire Medical Center	Ricoh	MPC300	S7206000222
Cheshire Medical Center	Ricoh	SP5100	S2109300361
Cheshire Medical Center	Ricoh	MPC300	S7215100187
Cheshire Medical Center	Ricoh	SP5100	S2109300132
Cheshire Medical Center	Ricoh	MP201SPF	W3018501558
Cheshire Medical Center	Ricoh	SP5100	S2109300036
Cheshire Medical Center	Ricoh	SP5100	S2109300139
Cheshire Medical Center	Ricoh	MP5001	V8015100546
Cheshire Medical Center	Ricoh	MP3351	V8314900837
Cheshire Medical Center	Ricoh	SP5100	S2109300108
Cheshire Medical Center	Ricoh	SP5100	S2109200073
Cheshire Medical Center	Ricoh	MPC4501	V9515100989
Cheshire Medical Center	Ricoh	MP201SPF	W3018501909
Cheshire Medical Center	Ricoh	MPC4501	V9515100978
Cheshire Medical Center	Ricoh	SP5100	S2109300278
Cheshire Medical Center	Ricoh	MP201SPF	W3019102718
Cheshire Medical Center	Ricoh	MPC300	S7215100149
Cheshire Medical Center	Ricoh	MPC3001	V9315100201
Cheshire Medical Center	Ricoh	SP5100	S2109300303
Cheshire Medical Center	Ricoh	SP5100	S2109300376
Cheshire Medical Center	Ricoh	MP201SPF	W3018501560
Cheshire Medical Center	Ricoh	SP5100	S2109300332
Cheshire Medical Center	Ricoh	SP5100	S2109300343
Cheshire Medical Center	Ricoh	SP5100	S2109300348
Cheshire Medical Center	Ricoh	SP5100	S2109300318
Cheshire Medical Center	Ricoh	SP5100	S2109300347
Cheshire Medical Center	Ricoh	SP5100	S2109200539
Cheshire Medical Center	Ricoh	MP201SPF	W3019102424

Cheshire Medical Center

Building	Make	Model	Serial #
Cheshire Medical Center	Ricoh	SP5100	S2109300362
Cheshire Medical Center	Ricoh	MP201SPF	W3018501910
Cheshire Medical Center	Ricoh	SP5100	S2109300319
Cheshire Medical Center	Ricoh	MPC4501	V9515100991
Cheshire Medical Center	Ricoh	MPC300	S7215100050
Cheshire Medical Center	Ricoh	MP201SPF	W3009600747
Cheshire Medical Center	Ricoh	SP5100	S2193000075
Cheshire Medical Center	Ricoh	SP5100	S2109300340
Cheshire Medical Center	Ricoh	MPC300	S7206000281
Cheshire Medical Center	Ricoh	SP5100	S2109300308
Cheshire Medical Center	Ricoh	SP5100	S2109300265
Cheshire Medical Center	Ricoh	MP5001	V8015100600
Cheshire Medical Center	Ricoh	MP201SPF	W3019101557
Cheshire Medical Center	Ricoh	MP3351	V8315000202
Cheshire Medical Center	Ricoh	SP5100	S2109300039
Cheshire Medical Center	Ricoh	MPC300	S7214900306
Cheshire Medical Center	Ricoh	MP201SPF	W3009600771
Cheshire Medical Center	Ricoh	SP5100	S2109300312
Cheshire Medical Center	Ricoh	SP5100	S2109300296
Cheshire Medical Center	Ricoh	MPC300	S7206000317
Cheshire Medical Center	Ricoh	MPC300	S7214900320
Cheshire Medical Center	Ricoh	SP5100	S2109300336
Cheshire Medical Center	Ricoh	SP5100	S2109300100
Cheshire Medical Center	Ricoh	SP5100	S2109300288
Cheshire Medical Center	Ricoh	MP201SPF	W3018500946
Cheshire Medical Center	Ricoh	SP5100	S2109300073
Cheshire Medical Center	Ricoh	SP5100	S2109300009
Cheshire Medical Center	Ricoh	SP5100	S2109300138
Cheshire Medical Center	Ricoh	SP5100	S2109200652
Cheshire Medical Center	Ricoh	MPC300	S7214900314

Cheshire Medical Center

Building	Make	Model	Serial #
Cheshire Medical Center	Ricoh	SP5100	S2109300032
Cheshire Medical Center	Ricoh	MPC300	S7214900312
Cheshire Medical Center	Ricoh	MP3351	V8314900833
Cheshire Medical Center	Ricoh	MP201SPF	W3018501546
Cheshire Medical Center	Ricoh	MP201SPF	W3028700149
Cheshire Medical Center	Ricoh	MP201SPF	W3019102446
Cheshire Medical Center	Ricoh	SPC232DN	S5409401391
Cheshire Medical Center	Ricoh	MPC300	S7214900302
Cheshire Medical Center	Ricoh	MP201SPF	W3018501916
Cheshire Medical Center	Ricoh	MP201SPF	W3019102719
Cheshire Medical Center	Ricoh	SPC320DN	S9918500169
Cheshire Medical Center	Ricoh	SPC320DN	S9918500129
Cheshire Medical Center	Ricoh	MPC300	S7215100153
Cheshire Medical Center	Ricoh	SP5100	S2109300212
Cheshire Medical Center	Ricoh	SP5100	S2109300040
Cheshire Medical Center	Ricoh	SP5100	S2109300335
Cheshire Medical Center	Ricoh	SPC320DN	S9918500123
Cheshire Medical Center	Ricoh	MP3351	V8314900669
Cheshire Medical Center	Ricoh	SP5100	S2109200108
Cheshire Medical Center	Ricoh	MPC4501	V9515100985
Cheshire Medical Center	Ricoh	SP5100	S2109300341
Cheshire Medical Center	Ricoh	MPC300	S7215100045
Cheshire Medical Center	Ricoh	MP201SPF	W3019101420
Cheshire Medical Center	Ricoh	SPC320DN	S9918500168
Cheshire Medical Center	Ricoh	MP201SPF	W3019101562
Cheshire Medical Center	Ricoh	MPC300	S7214900317
Cheshire Medical Center	Ricoh	MP201SPF	W3019100526
Cheshire Medical Center	Ricoh	SP5100	S2109300126
Cheshire Medical Center	Ricoh	SPC320DN	S9918500171
Cheshire Medical Center	Ricoh	SP5100	S2109200604

Cheshire Medical Center

Building	Make	Model	Serial #
Cheshire Medical Center	Ricoh	MPC300	S7214900318
Cheshire Medical Center	Ricoh	MPC300	S7206000313
Cheshire Medical Center	Ricoh	SP5100	S2109300326
Cheshire Medical Center	Ricoh	MP201SPF	W3019100534
Cheshire Medical Center	Ricoh	SP5100	S2109300051
Cheshire Medical Center	Ricoh	SP5100	S2109300221
Cheshire Medical Center	Ricoh	SP5100	S2109300159
Cheshire Medical Center	Ricoh	MPC300	S7214900179
Cheshire Medical Center	Ricoh	SP5100	S2109300283
Cheshire Medical Center	Ricoh	MPC300	S7214900249
Cheshire Medical Center	Ricoh	MP201SPF	W3019102663
Cheshire Medical Center	Ricoh	SP5100	S2199300015
Cheshire Medical Center	Ricoh	SP5100	S2109300024
Cheshire Medical Center	Ricoh	MPC3001	V9315000182
Cheshire Medical Center	Ricoh	SP5100	S2109200195
Cheshire Medical Center	Ricoh	SP5100	S2109300282
Cheshire Medical Center	Ricoh	MP201SPF	W3019102716
Cheshire Medical Center	Ricoh	SP5100	S2109300064
Cheshire Medical Center	Ricoh	MPC300	S7215100410
Cheshire Medical Center	Ricoh	SP5100	S2109300131
Cheshire Medical Center	Ricoh	MP201SPF	W3018500998
Cheshire Medical Center	Ricoh	SP5100	S2109300168
Cheshire Medical Center	Ricoh	MP201SPF	W3018500971
Cheshire Medical Center	Ricoh	SPC320DN	S9918500155
Cheshire Medical Center	Ricoh	MP201SPF	W3018501908
Cheshire Medical Center	Ricoh	SP5100	S2109300231
Cheshire Medical Center	Ricoh	MPC300	S7206000321
Cheshire Medical Center	Ricoh	MP5001	V8015100700
Cheshire Medical Center	Ricoh	MP6001	V6915100326
Cheshire Medical Center	Ricoh	MP201SPF	W3018500945

Cheshire Medical Center

Building	Make	Model	Serial #
Cheshire Medical Center	Ricoh	SP5100	S2109200505
Cheshire Medical Center	Ricoh	MP3351	V8314900550
Cheshire Medical Center	Ricoh	SP5100	S2109300310
Cheshire Medical Center	Ricoh	MPC300	S7206000322
Cheshire Medical Center	Ricoh	SP5100	S2109300352
Cheshire Medical Center	Ricoh	MPC300	S7214900316
Cheshire Medical Center	Ricoh	MPC300	S7214900166
Cheshire Medical Center	Ricoh	MP3351	V8315000196
Cheshire Medical Center	Ricoh	SP5100	S2109300191
Cheshire Medical Center	Ricoh	MP201SPF	W3009600859
Cheshire Medical Center	Ricoh	SP5100	S2109300151
Cheshire Medical Center	Ricoh	MPC4501	V9515100993
Cheshire Medical Center	Ricoh	MPC300	S7214900289
Cheshire Medical Center	Ricoh	SPC320DN	S9918500131
Cheshire Medical Center	Ricoh	MPC300	S7215100411
Cheshire Medical Center	Ricoh	SP5100	S2109300299
Cheshire Medical Center	Ricoh	SP5100	S2109300223
Cheshire Medical Center	Ricoh	SP5100	S2109300251
Cheshire Medical Center	Ricoh	Pro907EX	V5010200129
Cheshire Medical Center	Ricoh	Pro907EX	V5010200027
Cheshire Medical Center	Ricoh	MPC300	S7214900274
Cheshire Medical Center	Ricoh	Pro907EX	V5010200024
Cheshire Medical Center	Ricoh	SP5100	S2109300267
Cheshire Medical Center	Ricoh	SP5100	S2109200529
Cheshire Medical Center	Ricoh	MP201SPF	W3018501859
Cheshire Medical Center	Ricoh	MPC300	S7214900319
Cheshire Medical Center	Ricoh	SP5100	S2109300269
Cheshire Medical Center	Ricoh	SP5100	S2109300160
Cheshire Medical Center	Ricoh	SP5100	S2109200136
Cheshire Medical Center	Ricoh	MPC300	S7215000115

Cheshire Medical Center

Building	Make	Model	Serial #
Cheshire Medical Center	Ricoh	MP3351	V8315000183
Cheshire Medical Center	Risograph	RZ310	81830878
Cheshire Medical Center	Xerox	CQ8570DN	XFN035824
Cheshire Medical Center	Xerox	CQ8570DN	XFN040067
Children's Learning Center	Ricoh	MP201SPF	W3019100532
Children's Learning Center	Ricoh	MPC3001	V9315000946
Emerald Street Building	Ricoh	MPC300	S7215100197
Emerald Street Building	Ricoh	SPC320DN	S9918500109
Emerald Street Building	Ricoh	MP201SPF	W3019100531
Emerald Street Building	Ricoh	MP201SPF	W3018501554
Emerald Street Building	Ricoh	MP201SPF	W3018501553
Island Street Building	Ricoh	SP5100	S2109600013
Island Street Building	Ricoh	SP5100	S2109300280
Island Street Building	Ricoh	SP5100	S2109600019
Island Street Building	Ricoh	MPC4501	V9515001705
Island Street Building	Ricoh	SP5100	S2109300141
Kingsbury House	Ricoh	SPC430	S9318501512
Kingsbury House	Ricoh	MP3351	V8315000190
Kingsbury House	Ricoh	MPC300	S7215100158
Kingsbury House	Ricoh	MPC3001	V9314900708
Monadnock Central - Jaffrey	Ricoh	SP5100	S2109200634
Peterborough Campus	Ricoh	MP201SPF	W3018801634
Peterborough Campus	Ricoh	SP5100	
Peterborough Campus	Ricoh	MP201SPF	W3028700146
Railroad Street 117	Ricoh	SPC320DN	S9918500052
Railroad Street 51	Ricoh	SP5100	S2109300230
Railroad Street 51	Ricoh	MPC3001	V9315100225
Railroad Street 51	Ricoh	SP5100	S2109300355
Railroad Street 51	Ricoh	MP201SPF	W3019100529
Walpole Campus	Ricoh	SP5100	S2109300311

Cheshire Medical Center

Building	Make	Model	Serial #
Walpole Campus	Ricoh	SP5100	S2109300150
Walpole Campus	Ricoh	MPC3001	V9315100283
Winchester Campus	Ricoh	SP5100	S2109300323
Winchester Campus	Ricoh	MPC3001	V9315100273

Owned Equipment

Equipment currently owned by client.

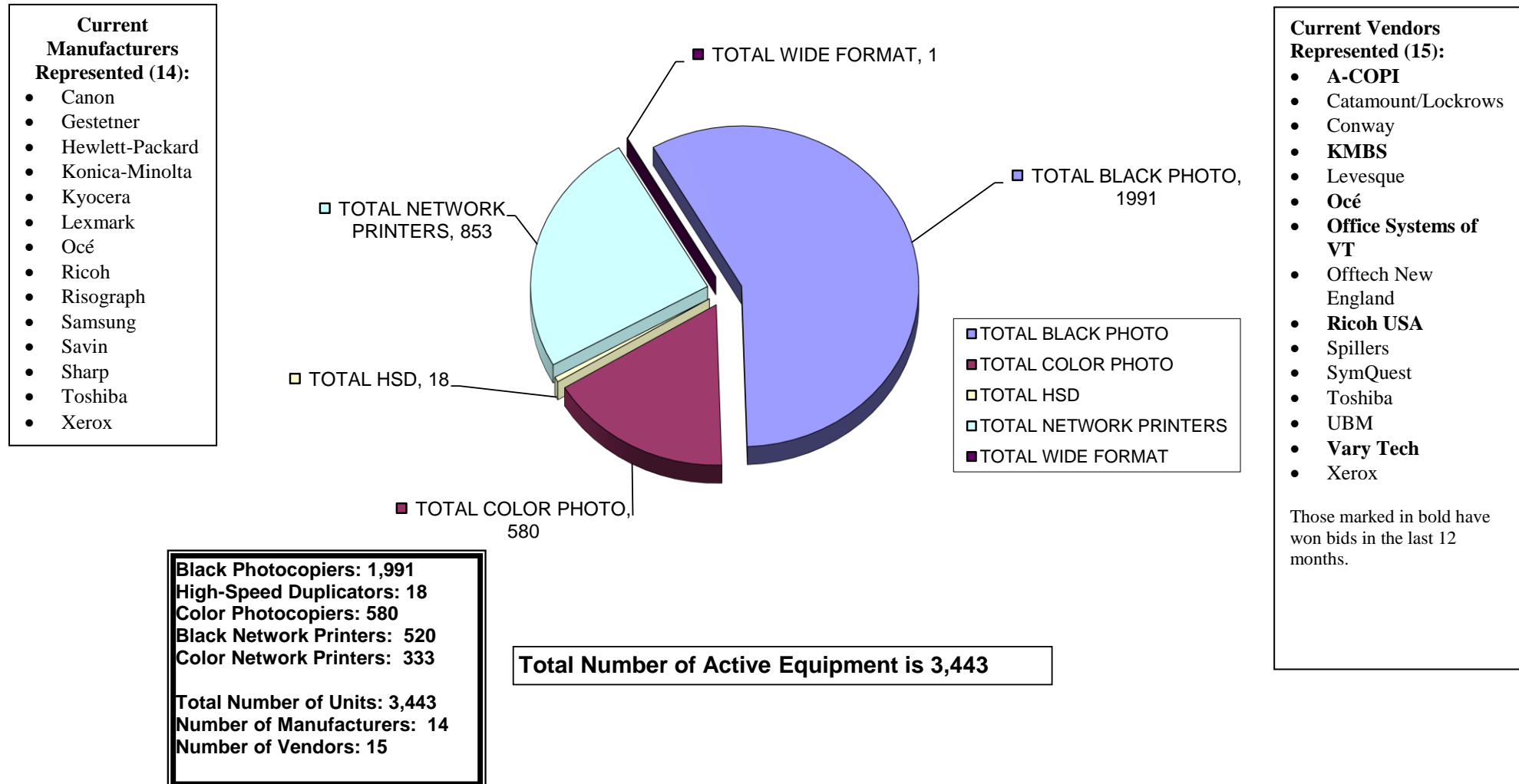
Building	Make	Model	Serial #
Cheshire Medical Center	Konica Minolta	BHC6501	A0U0011001934
Cheshire Medical Center	Konica Minolta	c500	65LE00633
Cheshire Medical Center	Ricoh	SPC320DN	S9918701315
Cheshire Medical Center	Ricoh	MP201SPF	W3019102464
Cheshire Medical Center	Ricoh	MPC300	S7206000316
Cheshire Medical Center	Ricoh	SP5100	S2399400155
Cheshire Medical Center	Ricoh	SP3410DN	S5818700199
Cheshire Medical Center	Ricoh	SP3410DN	S5809600253
Emerald Street Building	Xerox	CQ8570DN	XFN102009

NOTE: With your next upgrade, your current Leased Equipment would be listed as Owned, and any new equipment would be listed as Leased. Your current Owned Equipment would be traded out.

Active Reprographic Equipment & Manufacturers

SPC currently maintains 3,4 high-end production reprographic units across the tri-state region. They are currently running over 301 million annual prints (black and color), culminating into over 1.5 billion prints over five years!

SPC Total Active Equipment



Improved SPC Services

Print Management Software (MagicSoft) with its Benefits

In 2007 we initiated what is called **Print Management Software**. It was designed to capture meter reads and order supplies electronically on most, if not all, of your networked printing devices automatically. This software offers the following benefits:

Collect meter reads daily. Benefits...

- IT staff can isolate problem volume locations
- Monitor over-use or under-use locations and make the adjustments sooner
- Know when to shift from expensive laser and inkjet printers to low-cost-of-operation reprographic units
- Project cost on both black and color prints before the invoice arrives

Automatic ordering of consumable items. Benefits...

- Eliminate the need of valuable time spent ordering supplies manually

Automatic service alert sent to service provider. Benefit...

- E-mail sent out to both IT staff and service provider. Provider will then call to verify service need with IT staff to qualify the issue and send out a technician.

Cost per print plan for networking printing devices such as HP and Lexmark network printers. Benefits...

- Instead of individual expensive purchase of supply items, a cost-per-print quarterly in arrears at about half what you are currently paying will be offered.

SPC's *Value Add* to Our Cooperative Vendors

Dear Valued Vendor:

We truly do provide a value add to you before, during and after the installation process. Here is a few of our services to the client that benefit the Vendors as well.

Overall Benefit to You

- Opportunities brought to you – Hundreds of machines each year
- SPC is well respected in industry – You are partnering with them
- SPC values our vendors and speaks highly of them to our clients
- National Contracts that are all negotiated with the manufacturers at your disposal

Your Benefits Pre-Bid & During the Bid Process

- Sharing of previous bid results that help you to negotiate with your manufacturers
- On Site Survey of client requirements including mapping all devices
- Writing of the *Five Year Equipment Replacement Schedule* (Bid Specs)
- Controls the Bid Specs (Not allowing any vendor to underbid or offer discontinued equipment)
- Allow for the Vendor to sell directly to the client after the bids are in. A chance to explain your 'Value Add' directly to our clients. Customer has the right to pay more than low bid.

Your Benefits Before & During Installation

- Digital Needs Analysis: Matching up the machine to installation site
- Schedule & Coordinate Vendor Meeting with Client
- Cover the Cost of ESP Surge Protectors, Electrical Wiring, Computer Interface and any unexpected cost!
- Manage installation
- Audit installation
- Capture final meter reads for old contracts
- Close books on old devices & contracts

Your Ongoing Support

- Yearly Meter Reads
- Simplified Billing; SPC collects service funds for the Vendor
- Collection of all Meter Reads annually & reconciling them with the Client & Vendor
- STAR Doc: **S**ystem for **T**racking **A**nd **R**eporting **D**ocuments...Manages the Budget
- Annual Reports that flag machines that are being overused and underused thus improving reliability
- Mediating warranty issues in sensitive locations

Version Date: 10-9-2012

Announcing : STAR Doc!

SPC would like to introduce an exciting new tool:



STAR Doc has been custom developed and designed by SPC to assist their clients in efficiently and effectively managing all their assets. The detailed floor maps feature for all of our clients' devices is unique and invaluable. The floor maps will provide online, real-time information on each device daily, including meter reads. SPC realizes how important it is for their clients to be aligned with their budget. In response to that need, **STAR Doc** has the ability to project your budget and determine if you are on target or falling behind. This valuable feature provides our clients the access to information needed to make important budget decisions before the end of the year. Additionally, **STAR Doc** will store all your documents, which will include your most recent Upgrade Report, Annual Report, Compare Report, and Total Bid Analysis. At SPC we strive to improve our services and optimize our clients' resources; we are proud to be able to offer our clients all the benefits of the **STAR Doc** system.

Anticipated released date: September 2012

SPC’s Service & Supply Contract – Purpose & Sample

In an effort to serve our clients better, at our own expense, SPC hired Bond Counsel to set up your Service & Supply Contract to ensure accuracy and protection to our Clients. Integrated into and tailored to mirror the Lease-Purchase Agreement, this contract protects equipment held as collateral under the Lease-Purchase Agreement or for equipment already owned and purchased outright. Please note that it provides you with the option to upgrade your service contract with a 30-day termination notice. This provides you tremendous flexibility.

CONTRACT SAMPLE:

SERVICE AND SUPPLY CONTRACT
(LEASED EQUIPMENT)

The Vendor identified below of the equipment described at Exhibit A to Property Schedule No. 1 (the “Equipment”) to a Master Lease-Purchase Agreement between M.S.T. Government Leasing, LLC, as lessor (the “Lessor”) and Client, as lessee (the “Lessee”), dated beginning date, (the “Lease-Purchase”) hereby contracts with Lessee for the term of the Lease-Purchase (terminating on ending date) to provide comprehensive services, supplies, and maintenance to such Equipment, excluding only the cost of paper, transparencies, and staples, at a cost per copy per item of Equipment as shown on Schedule A attached hereto. In addition, for high-speed duplicators, Vendor may charge the cost shown on Schedule A attached hereto for masters used when the number of copies made by use of such masters is, on an annual average, fewer than 100. Vendor shall provide a four-hour response time to all service calls.

On July 1 of each calendar year during the term of the Lease-Purchase, Vendor, at its option, may increase such costs per copy under this Service and Supply Contract (the “Contract”) by 5% or by a percentage equal to the increase during the immediately preceding 12-month period of “The Consumer Price Index for All Urban Consumers (CPI-U) for the U.S. City Average for All Items, 1982-84 = 100,” whichever is less.

On July 1 of each calendar year during the term of the Lease-Purchase, Vendor shall credit to Lessee any cost of this Contract prepaid by Lessee and unused by Lessee because fewer copies were made by Lessee during the Contract period ending on such July 1 than were originally estimated under this Contract to be made by Lessee during such period. *If the Lease-Purchase is terminated prior to the end of its term, Vendor shall prorate and return to Lessee, within 30 days of such termination, any cost of this Contract prepaid by Lessee and unused by Lessee because of such early termination of the Lease-Purchase.*

Vendor: _____
Street Address: _____
City/State/Zip: _____
By (signature): _____
Name: _____
Title: _____

Lessee: _____
Street Address: _____
City/State/Zip: _____
By (signature): _____
Name: _____
Title: _____

SPC's Dual-Layered Warranty – Purpose & Explanation

Reprographic equipment is expensive and does not hold its value. Therefore, it is crucial for you and the banking industry holding the collateral to secure this asset.

Our unique Dual-Layered Warranty guarantees a like-for-like no-charge replacement unit in the event of equipment not performing satisfactorily.

1. **Servicing Vendor;** implemented in 1988
2. **ESP Electrical;** implemented in 2007, all photocopiers with such units will be warranted from electrical damage by ESP.

ESPs (Electronic Surge Protectors) with our most recent upgrades are being installed by SPC on 40 CPM units and faster in order to cut down on approximately 30% of all service calls. These units will not only protect from electrical surges but will also filter out electronic noise that creates havoc with boards and the operation of your equipment.

WARRANTY SAMPLE:

WARRANTY (LEASED EQUIPMENT)

The Vendor identified below of the equipment described on Schedule A(P) attached hereto (the "Equipment") sold by Vendor to _____ (the "Owner") hereby warrants to Owner that, if any such Equipment malfunctions through no fault of Owner during a term commencing on _____ and terminating on _____ and such Equipment cannot be repaired promptly, Vendor promptly will replace such Equipment with equipment which is equal to or superior in quality and capabilities to the Equipment being replaced, at no cost to Owner.

The only exclusions to this Warranty are as follows:

1. This Warranty will expire for an item of Equipment when the life expectancy of such item of Equipment in number of copies, as shown on Schedule A(P) attached hereto, is exceeded;
2. This Warranty will expire for an item of Equipment at the date which is ten years after such Equipment was first offered for sale or lease by the manufacturer as shown on Schedule A(P) attached hereto.

Vendor:	_____
Street Address:	_____
City/State/Zip:	_____
By (signature):	_____
Name:	_____
Title:	_____